

Product datasheet for **RG223119**

CTNND1 (NM_001085466) Human Tagged ORF Clone

Product data:

Product Type:	Expression Plasmids
Product Name:	CTNND1 (NM_001085466) Human Tagged ORF Clone
Tag:	TurboGFP
Symbol:	CTNND1
Synonyms:	BCDS2; CAS; CTNND; p120; p120(CAS); p120(CTN); P120CAS; P120CTN
Mammalian Cell Selection:	Neomycin
Vector:	pCMV6-AC-GFP (PS100010)
E. coli Selection:	Ampicillin (100 ug/mL)



[View online »](#)

ORF Nucleotide
Sequence:

>RG223119 representing NM_001085466
Red=Cloning site Blue=ORF Green=Tags(s)

TTTTGTAATACGACTCACTATAGGGCGGCCGGGAATTCGTCGACTGGATCCGGTACCGAGGAGATCTGCC
GCCGCGATCGCC

ATGCAGGAGCCGGGCGAGATTGTGGAGACCTACACGGAGGAGGATCCTGAGGGAGCCATGTCTGTAGTCT
CTGTGGAGACCTCAGATGATGGGACCACTCGGCGCACAGAGACCACGGTCAAGAAAGTAGTGAAGACTGT
GACAACACGAGACGTACAGCCAGTCGCTATGGGACCAGACGGGTTGCCTGTGGATGCTTCATCAGTTTCT
AACAACTATATCCAGACTTTGGGTCTGATTTCCGCAAGAATGGCAATGGGGGACCTGGTCCCTATGTGG
GGCAAGCTGGCACTGCTACCTTCTTAGGAACCTCCACTACCTCCTGATGGTTATAGTCGCCACTATGA
AGATGGTTATCCAGGTGGCAGTGATAACTATGGCAGTCTGTCCCAGGATGACCCGATTGAGGAGCGGTAT
AGGCCAGCATGGAAGGCTACCGGGCACCTAGTAGACAGGATGTGTATGGGCCCCAACCCAGGTTCCGG
TAGGTGGGAGCAGCGTGGATCTGCATCGCTTTCATCCAGAGCCTTATGGGCTAGAGGATGACCAGCGTAG
TATGGGCTATGATGACCTGGATTATGGTATGATGTCTGATTATGGCACTGCCCGTCGGACTGGGACACCC
TCTGACCCTCGTCGGCGCCTCAGGAGCTATGAAGACATGATTGGTGAGGAGGTGCCATCGGATCAATACT
ACTGGGCTCCTTTGGCCAGCATGAGCGAGGAAGTTTAGCAAGCTTGGATAGCCTGCGCAAGGAGGGCC
TCCACCTCCTAATTGGAGACAGCCAGAGCTGCCAGAGGTGATCGCCATGCTTGGATTCCGCTTGGATGCT
GTCAAGTCCAATGCAGCTGCATACCTGCAACACTTATGCTACCGCAATGACAAGGTGAAGACTGACGTGC
GGAAGCTCAAGGGCATCCAGTACTGGTGGGATTGTTAGACCATCCAAAAAGGAAGTGCACCTTGGAGC
CTGTGGAGCTCTCAAGAATATCTCTTTGGACGTGACCAGGATAACAAGATTGCCATAAAAACTGTGAT
GGTGTGCCTGCCCTTGTGCGATTGCTTCGAAAGGCTCGTGATATGGACCTTACTGAAGTTATTACCGGAA
CCCTGTGGAATCTTTCATCCCATGACTCAATCAAAATGGAGATTGTGGACCATGCATGCCATCCCTTGAC
AGATGAAGTGATCATTCTCATTCTGGTTGGGAGCGGGAACCTAATGAAGACTGTAAGCCACGCCATATT
GAGTGGGAATCGGTGCTACCAACACAGCTGGCTGCCTTAGGAATGTAAGCTCAGAGAGGAGTGAAGCTC
GCCGGAACCTTCGGGAATGTGATGGTTTAGTTGATGCCCTCATTTCATTGTTTCAGGCTGAGATTGGGCA
GAAGGATTCAGACAGCAAGCTTGTAGAGAACTGTGTTGCCTTCTCGGAACTTATCATATCAAGTTCAC
CGGGAGATCCACAGGCAGAGCGTTACCAAGAGGCAGCTCCCAATGTTGCCAACAACTACTGGCCACATG
CTGCCAGTTGCTTTGGGGCAAGAAGGGCAAAGATGAGTGGTTCTCCAGAGGGAAAAACCTATAGAGGA
TCCAGCAAACGATACAGTGGATTCCCTAAAAGAAGGAGTCCAGCTCGAGGCTATGAGCTCTTATTTTCAG
CCAGAGGTGGTTCGGATATACATCTCACTTCTTAAAGGAGCAAGACTCCTGCCATCCTAGAAGCCTCAG
CTGGAGCTATCCAGAACTGTGTGCTGGGCGCTGGACGTATGGTCGATACATCCGCTCTGCTCTGGTCA
AGAGAAGGCTCTTCTGCCATAGCTGACCTCCTGACTAATGAACATGAACGGGTGGTGAAGCTGCATCT
GGAGCACTGAGAAACCTGGCTGTGGATGCTCGCAACAAAGAAATTAATTGGTAAACATGCTATTCTAACT
TGGTAAAGAACTGCCAGGAGGACAGCAGAACTCCTCTTGGAAATTTCTCTGAGGACACTGTCATCTCTAT
TTTGAACACTATCAACGAGGTTATCGCTGAGAACTTGGAGGCTGCCAAAAAGCTTCGAGAGACACAGGGT
ATTGAGAAGCTGGTGTGATCAACAAATCAGGGAACCGCTCAGAAAAAGAAGTTCGAGCAGCAGCACTTG
TATTACAGACAACTGGGGATATAAGGAACTGCGGAAGCCACTGGAAAAAGAAGGATGGAAGAAATCAGA
CTTTCAGGTGAATCTAAACAATGCTTCCGAAGCCAGAGCAGTATTTCATATGATGATAGTACTCCTCCT
CTCATTGACCGGAACCAAAAATCAGATAAGAAACCTGATCGGGAAGAAATTCAGATGAGCAATATGGGAT
CAAACACAAAATCACTAGATAACAATATTCCACACCAAATGAGAGAGGAGACCACAATAGAACACTGGA
TCGATCGGGGATCTAGGCGACATGGAGCCATTGAAGGGAACAACACCCTTGTGACAGAAGATT

ACCGTACGCGGCCGCTCGAG – GFP Tag – GTTAA

Protein Sequence: >RG223119 representing NM_001085466
Red=Cloning site Green=Tags(s)

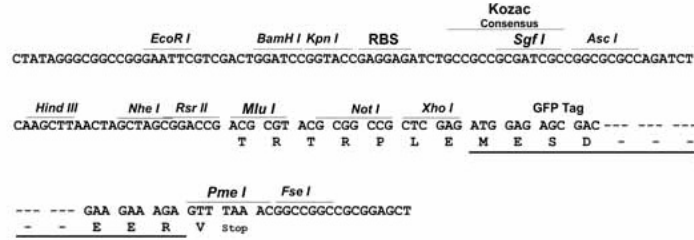
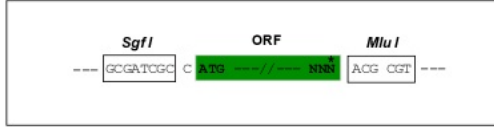
MQEPGQIVETYTEEDPEGAMSVSVETSDDGTTTRRTETT VKKVVKTVTTRTVQPVAMGPDGLPVDASSVS
NNYIQT LGRDFRKNNGGPGPYVGQAGTATLPRNFHYPPDGYSRHYEDGYPGGSDNYGSLSRVTRIEERY
RPSMEGYRAPS RQDVYGPQPQVRVGGSSVDLHRFHPEPYGLEDDQRSMGYDDL DYGMMSDYGTARRTGTP
SDPRRRLRSYEDMIGEEVPSDQYYWAPLAQHERGSLASLDSL RKGPPPPNWRQPELPEVIAMLGFR L DA
VKSNAAYLQHL CYRNDKVKTDVRKLGIPVLVGLLDHPKKEVHLGACGALKNISFGRDQDNKIAIKNCD
GVPALVRLLRKARDMDL TEVITGTLWNLSSHDSIKMEIVDHALHALTDEVIIPHSGWEREPNEDCKPRHI
EWESVLTNTAGCLRNVSSEARRKLRECDGLVDALIFIVQAEIGQKSDSKLVENCVCLLRNLSYQVH
REIPQAERYQEAAPNVANNTGPHAASCFGAKK GKDEWFSRGKKPIEDPANDTVDFPKRTSPARGYELLFQ
PEVVRIYISLLKESKTPAILEASAGAIQNL CAGRWTYGRYIRSALRQEKALSAIADLLTNEHERVKAAS
GALRNLAVDARNKELIGKHAIPNLVKNLPGGQQNSSWNFSEDTVISILNTINEVIAENLEAAKLR ETQG
IEKLV L INKSGNRSEKEVRAAAVLQTIWGYKELRKPLEKEGWKKSDFQVNLNNASRSQSSHSYDDSTLP
LIDRNQKSDKKPDREEIQMSNMGSNKSLDNNYSTPNERGDHNR TLDRSGDLGDMEPLKGT TPLMQKI

TRTRPLE - GFP Tag - V

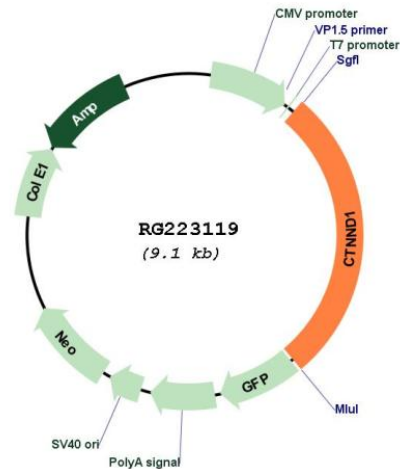
Restriction Sites: Sgfl-Mlul

Cloning Scheme:

Cloning sites used for ORF Shutting:



Plasmid Map:



ACCN: NM_001085466

ORF Size: 2514 bp

OTI Disclaimer: The molecular sequence of this clone aligns with the gene accession number as a point of reference only. However, individual transcript sequences of the same gene can differ through naturally occurring variations (e.g. polymorphisms), each with its own valid existence. This clone is substantially in agreement with the reference, but a complete review of all prevailing variants is recommended prior to use. [More info](#)

OTI Annotation: This clone was engineered to express the complete ORF with an expression tag. Expression varies depending on the nature of the gene.

Components: The ORF clone is ion-exchange column purified and shipped in a 2D barcoded Matrix tube containing 10ug of transfection-ready, dried plasmid DNA (reconstitute with 100 ul of water).

Reconstitution Method:

1. Centrifuge at 5,000xg for 5min.
2. Carefully open the tube and add 100ul of sterile water to dissolve the DNA.
3. Close the tube and incubate for 10 minutes at room temperature.
4. Briefly vortex the tube and then do a quick spin (less than 5000xg) to concentrate the liquid at the bottom.
5. Store the suspended plasmid at -20°C. The DNA is stable for at least one year from date of shipping when stored at -20°C.

RefSeq: [NM_001085466.1](#), [NP_001078935.1](#)

RefSeq Size: 5795 bp

RefSeq ORF: 2517 bp

Locus ID: 1500

UniProt ID: [O60716](#)

Cytogenetics: 11q12.1

Protein Families: Druggable Genome

Protein Pathways: Adherens junction, Leukocyte transendothelial migration

Gene Summary: This gene encodes a member of the Armadillo protein family, which function in adhesion between cells and signal transduction. Multiple translation initiation codons and alternative splicing result in many different isoforms being translated. Not all of the full-length nature of the described transcript variants have been determined. Read-through transcription also exists between this gene and the neighboring upstream thioredoxin-related transmembrane protein 2 (TMX2) gene. [provided by RefSeq, Dec 2010]