

Product datasheet for **RG223118**

WWP2 (NM_007014) Human Tagged ORF Clone

Product data:

Product Type:	Expression Plasmids
Product Name:	WWP2 (NM_007014) Human Tagged ORF Clone
Tag:	TurboGFP
Symbol:	WWP2
Synonyms:	AIP2; WWp2-like
Mammalian Cell Selection:	Neomycin
Vector:	pCMV6-AC-GFP (PS100010)
E. coli Selection:	Ampicillin (100 ug/mL)



[View online »](#)

**ORF Nucleotide
Sequence:**

>RG223118 representing NM_007014
 Red=Cloning site Blue=ORF Green=Tags(s)

TTTTGTAATACGACTCACTATAGGGCGGCCGGGAATTCGTCGACTGGATCCGGTACCGAGGAGATCTGCC
 GCC**CGGATCGCC**

ATGGCATCTGCCAGCTCTAGCCGGCAGGAGTGGCCCTGCCTTTTGAGAAGTCTCAGCTCACTTTGAAAG
 TGGTGTCCGCAAAGCCCAAGGTGATAATCGTCAACCTCGAATTAACCTCTACGTGGAGGTGGCGGTGGA
 TGGACTCCCCAGTGAGACCAAGAAGACTGGGAAGCGCATTGGGAGCTCTGAGCTTCTCTGGAATGAGATC
 ATCATTGTAATGTCACGGCACAGAGTCATTTAGATTTAAAGGTCTGGAGCTGCCATACCTTGAGAAATG
 AACTGCTAGGCACCGCATCTGTCAACCTCTCCAACGTCTTGAAGAACAATGGGGGCAAAATGGAGAACAT
 GCAGCTGACCCTGAACCTGCAGACGGAGAACAAGGCAGCGTTGTCTCAGGCGGAGAGCTGACAATTTTC
 CTGGACGGGCCAACTGTTGATCTGGGAAATGTGCCTAATGGCAGTGCCCTGACAGATGGATCACAGCTGC
 CTTGAGAGACTCCAGTGAACAGCAGTAGCTCCAGAGAACCAGCCAGCCCCAGCACAACTGCTT
 TGGTGGAAAGATCCCGGACGCACAGACATTCGGGTGCTTCAGCCAGAACAACCCAGCAACCGGCGAGCAA
 AGCCCCGGTGTCTCGGAGCCGGCACCGCCAGCCCGTCAAGAACTCAGGCCACAGTGCTTGGCCAATGGCA
 CAGTGAATGATGAACCCACAACAGCCACTGATCCCGAAGAACCTTCCGTTGTTGGTGTGACGTCCCCACC
 TGCTGCACCCTTGAGTGTGACCCCGAATCCCAACAGCACTTCTCTCCCTGCCACGCCACCCGGCTGAA
 GGAGAGGAACCCAGCACTTCGGGTACACAGCAGCTCCCAGCGGCTGCCAGGCCCGCCGACGCTCTGCCTG
 CTGGATGGGAACAGCGAGAGCTGCCCAACGGACGTGTCTATTATGTTGACCACAATACCAAGACCACCAC
 CTGGGAGCGGCCCTTCTCCAGGCTGGGAAAAACGCACAGATCCCCGAGGCAGGTTTTACTATGTGGAT
 CACAATACTCGGACCACCCTGGCAGCGTCCGACCGGAGTACGTGCGCAACTATGAGCAGTGGCAGT
 CGCAGCGGAATCAGCTCCAGGGGCCATGCAGCACTTCAGCCAAAGATTCTCTACCAGTCTTCGATGTC
 TTCGACTGACCATGATCCCTGGGCCCTCCCTCCTGGCTGGGAGAAAAGACAGGACAATGGACGGGTG
 TATTACGTGAACCATAACACTCGCACGACCCAGTGGGAGGATCCCGGACCCAGGGGATGATCCAGGAAC
 CAGCTCTGCCCCAGGATGGGAGATGAAATACACCAGCGAGGGGGTGCATACTTTGTGGACCACAATAC
 CCGCACCACCCTTTAAGGATCCTCGCCCGGGTTTGTGAGTGGGGACGAAGCAAGGTTCCCTGTTGCT
 TATGACCCGAGTTTTCGGTGGAAGTATCACCAGTTCGTTTCTCTGCCATTCAAATGCCCTACCTAGCC
 ACGTGAAGATCAGCGTTTCCAGGCAGACGCTTTTCAAGATTCTTCCAACAGATCATGAACATGAAACC
 CTATGACCTGCGCCGCCGCTCTACATCATCATGCGTGGCGAGGAGGGCCTGGACTATGGGGGCATCGCC
 AGAGAGTGGTTTTCTCTGTCTCAYGAGGTGCTCAACCCTATGTATTGTTTATTTGAATATGCCGGAA
 AGAACAATTACTGCCTGCAGATCAACCCCGCTCCTCCATCAACCCGGACACCTCACCTACTTTGCTT
 TATAGGCAGATTCATCGCCATGGCGCTGTACCATGGAAAGTTCATCGACACGGGCTTACCCCTCCCTTTC
 TACAAGCGGATGCTCAATAAGAGACCAACCCTGAAAGACCTGGAGTCCATTGACCCTGAGTTCTACAAC
 CCATTGTCTGGATCAAAGAGAACAACCTGGAAGAATGTGGCTGGAGCTGTACTTCATCCAGGACATGGA
 GATACTGGGCAAGGTGACGACCCACGAGCTGAAGGAGGGCGGCGAGAGCATCCGGGTCACGGAGGAGAAC
 AAGGAAGAGTACATCATGCTGCTGACTGACTGGCGTTTACCCGAGGCGTGAAGAGCAGACCAAGCCT
 TCCTGGATGGCTTCAACGAGGTGGCCCCGCTGGAGTGGCTGCGCTACTTTGACGAGAAAGAGCTGGAGCT
 GATGCTGTGCGGCATGCAGGAGATAGACATGAGCGACTGGCAGAAGAGCACCATCTACCGCACTACACC
 AAGAACAGCAAGCAGATCCAGTGGTTCTGGCAGTGGTGAAGGAGATGGACAACGAGAAGAGGATCCGGC
 TGCTGCAGTTTGTACCCGTACCTGCCCGCTGCCCGTGGGGGATTTGCCGAACCTCATCGGTAGCAACGG
 ACCACAGAAGTTTTGCATTGACAAAGTTGGCAAGGAAACCTGGCTGCCAGAAGCCACACCTGCTTCAAC
 CGTCTGGATCTTCCACCCTACAAGAGCTACGAACAGCTGAGAGAGAAGCTGCTGTATGCCATTGAGGAGA
 CCGAGGGCTTTGGACAGGAG

ACGCGTACGCGGCCGCTCGAG - GFP Tag - GTTTAA

Protein Sequence: >RG223118 representing NM_007014
 Red=Cloning site Green=Tags(s)

MASASSSRAGVALPFEKSQLTLKVVSAKPKVHNRQPRINSYVEVAVDGLPSETKKTGKRIGSELLWNEI
 IILNVTAQSHLDLKVWSCHTLRNELLGTASVNL SNVLKNNGGKMEMNQLTLNLQ TENKGSVVSGGELTIF
 LDGPTVDLGNVPNGSAL TDGSQ LPSRDSSGTAVAPENRHQPPSTNCFGGRSRTHRHSGASARTTPATGEQ
 SPGARSRHRQPVKNSGHSGLANGTVNDEPTTATDPEEPSVVGVTSPPAAPLSVTPNPNTTSLPAPATPAE
 GEEPSTSGTQQLPAAAQAPDALPAGWEQREL PNGRVYYVDHNTKTTTWERPLPPGW EKRTDPRGRFYVD
 HNTRTTTWRPTAEYVRNYEQWQSQRNQLQGAMQHFSQRFLYQSSSASTDHDPLGPLPPGW EKRDNGRV
 YYVNHNTRTTQWEDPRTQGMIEPALPPGWEMKYTSEGVRYFVDHNTRTTTFKDRPGFESGTKQGSPGA
 YDRSFRWKYHQFRFLCHSNALPSHVKISVSRQTLFEDSFQQIMNMKPYDLRRRLYIIMRGE EGLDYGGIA
 REWFFLLSXEVLNPMYCLFEYAGKNNYCLQINPASSINPDHLYFRFIGRFIAMALYHGKFI DTGFTLPF
 YKRLMLNRPTLKDLESIDPEFYNSIVWIKENNEECGLELYFIQDMEILGKVTTHELKEGGESIRVTEEN
 KEEYIMLLTDWRFTRGVEEQTKAFLDGFNEVAPLEWLR YFDEKELEMLCGMQEIDMSDWQKSTIYRHYT
 KNSKQIQWFVQVKEMDNEKRIRLLQFVTGT CRLPVGGFAELIGSNGPQKFCIDKVGKETWLP RSHTCFN
 RLDLPPYKSYEQLREKLLYAIEETEFGGQE

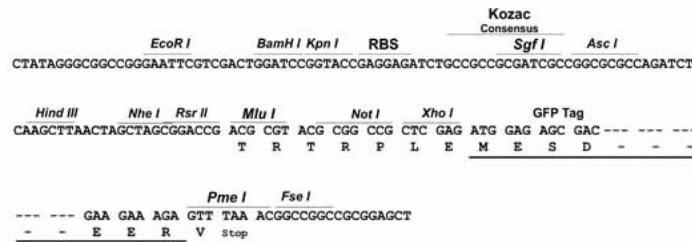
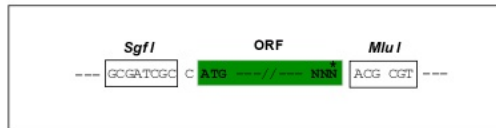
TRTRPLE - GFP Tag - V

Restriction Sites:

SgfI-MluI

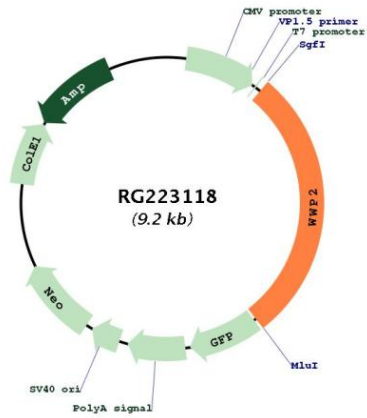
Cloning Scheme:

Cloning sites used for ORF Shuttling:



ACCN:	NM_007014
ORF Size:	2610 bp
OTI Disclaimer:	The molecular sequence of this clone aligns with the gene accession number as a point of reference only. However, individual transcript sequences of the same gene can differ through naturally occurring variations (e.g. polymorphisms), each with its own valid existence. This clone is substantially in agreement with the reference, but a complete review of all prevailing variants is recommended prior to use. More info
OTI Annotation:	This clone was engineered to express the complete ORF with an expression tag. Expression varies depending on the nature of the gene.
Components:	The ORF clone is ion-exchange column purified and shipped in a 2D barcoded Matrix tube containing 10ug of transfection-ready, dried plasmid DNA (reconstitute with 100 ul of water).
Reconstitution Method:	<ol style="list-style-type: none">1. Centrifuge at 5,000xg for 5min.2. Carefully open the tube and add 100ul of sterile water to dissolve the DNA.3. Close the tube and incubate for 10 minutes at room temperature.4. Briefly vortex the tube and then do a quick spin (less than 5000xg) to concentrate the liquid at the bottom.5. Store the suspended plasmid at -20°C. The DNA is stable for at least one year from date of shipping when stored at -20°C.
RefSeq:	NM_007014.3 , NP_008945.2
RefSeq Size:	4527 bp
RefSeq ORF:	2613 bp
Locus ID:	11060
UniProt ID:	O00308
Cytogenetics:	16q22.1
Domains:	C2, HECT, WW
Protein Families:	Druggable Genome
Protein Pathways:	Ubiquitin mediated proteolysis
Gene Summary:	This gene encodes a member of the Nedd4 family of E3 ligases, which play an important role in protein ubiquitination. The encoded protein contains four WW domains and may play a role in multiple processes including chondrogenesis and the regulation of oncogenic signaling pathways via interactions with Smad proteins and the tumor suppressor PTEN. Alternatively spliced transcript variants encoding multiple isoforms have been observed for this gene, and a pseudogene of this gene is located on the long arm of chromosome 10. [provided by RefSeq, Jul 2012]

Product images:



Circular map for RG223118