

## Product datasheet for **RG223041**

### PCDH12 (NM\_016580) Human Tagged ORF Clone

#### Product data:

Product Type:	Expression Plasmids
Product Name:	PCDH12 (NM_016580) Human Tagged ORF Clone
Tag:	TurboGFP
Symbol:	PCDH12
Synonyms:	DMJDS1; VE-cadherin-2; VECAD2
Mammalian Cell Selection:	Neomycin
Vector:	pCMV6-AC-GFP (PS100010)
E. coli Selection:	Ampicillin (100 ug/mL)
ORF Nucleotide Sequence:	>RG223041 representing NM_016580 Red=Cloning site Blue=ORF Green=Tags(s)

TTTTGTAATACGACTCACTATAGGGCGGCCGGAATTCGTCGACTGGATCCGGTACCGAGGAGATCTGCC  
GCC**CGATCGCC**

ATGATGCAACTTCTGCAACTTCTGCTGGGGCTTTGGGGCCAGGTGGCTACTTATTTCTTTAGGGGATT  
GTCAGGAGGTGACCACTCTCACGGTAAAATACCAAGTGTGAGAGGAAGTGCCATCTGGTACAGTGATCGG  
GAAGCTGTCCAGGAAGTGGCCGGGAGGAGAGGCGGAGGCAAGCTGGGGCTGCCTCCAGGTGTTGCAG  
CTGCCTCAGGCGCTCCCCATTAGGTGGACTCTGAGGAAGGCTTGGCTCAGCACAGGCAGGCGGCTGGATC  
GAGAGCAGCTGTGCCGACAGTGGGATCCCTGCCTGGTTTCTTTGATGTGCTTGCCACAGGGGATTTGGC  
TCTGATCCATGTGGAGATCCAAGTGTGGACATCAATGACCACCAGCCAGGTTTCCCAAAGGCGAGCAG  
GAGCTGGAAATCTCTGAGAGCGCTCTCTGCGAACCCGGATCCCCCTGGACAGAGCTCTTGACCCAGACA  
CAGGCCCTAACACCCTGCACACCTACACTCTGTCTCCAGTGAGCACTTTGCCTTGGATGTCATTGTGGG  
CCCTGATGAGACCAACATGCAGAACTCATAGTGGTGAAGGAGCTGGACAGGAAATCCATTCAATTTTT  
GATCTGGTGTAACTGCCTATGACAATGGGAACCCCAAGTACAGTACCAGCTTGGTCAAGGTCAACG  
TCTTGGACTCCAATGACAATAGCCCTGCCTTGGTGGAGTTCAGTGGCACTGGAATCCAAGAAGATGC  
TGCACCTGGTACGCTTCTCATAAAACTGACCCGACAGACCCTGACCAAGGCCCAATGGGAGGTGGAG  
TTCTTCTCAGTAAGCACATGCCTCCAGAGGTGCTGGACACCTCAGTATTGATGCAAGACAGGCCAGG  
TCATTCTGCGTGCACCTCTAGACTATGAAAAGAACCCTGCCTACGAGGTGGATGTTCAAGCAAGGGACCT  
GGTCCCAATCCTATCCAGCCATTGCAAAGTCTCATCAAGTTCTGATGTCAATGACAACATCCCA  
AGCATCCAGTACATGGGCTCCAGCCATCACTGGTGTGAGAAGCTTCCCAAGGACAGTTTTATTG  
CTTTGTCATGGCAGATGACTTGGATTGAGACACAATGGTTTGGTCCACTGCTGGCTGAGCCAAGAGCT  
GGGCCACTTCAGGCTGAAAAGAACTAATGGCAACACATACATGTTGCTAACCAATGCCACTGGACAGA  
GAGCAGTGGCCAAATATACCTCACTCTGTTAGCCCAAGACCAAGGACTCCAGCCCTTATCAGCCAAGA  
AACAGCTCAGCATTAGATCAGTACATCAACGACAATGCACCTGTGTTGAGAAAAGCAGGTATGAAGT  
CTCCACGGGGAAAACAACCTTACCCTCTTACCTCATTACCATCAAGGCTCATGATGCAGACTTGGGC



[View online >](#)

ATTAATGGAAAAGTCTCATACCGCATCCAGGACTCCCCAGTTGCTCACTTAGTAGCTATTGACTCCAACA  
CAGGAGAGGTCACTGCTCAGAGTCACTGAAGATGAAGAGATGGCCGGCTTTGAGTTCCAGGTGATCGC  
AGAGGACAGCGGGCAACCCATGCTTGCATCCAGTGTCTGTGTGGGTACGCCTCTTGGATGCCAATGAT  
AATGCCCCAGAGGTGGTCCAGCCTGTGCTCAGCGATGGAAAAGCCAGCCTCTCCGTGCTTGTGAATGCT  
CCACAGGCCACCTGCTGGTGGCCATCGAGACTCCCAATGGCTTGGGCCAGCGGGCACTGACACACCTCC  
ACTGGCCACTCACAGTCCCAGCCATTCCTTTTGACAACCATTGTGGCAAGAGATGCAGACTCGGGGGCA  
AATGGAGAGCCCCCTACAGCATCCGCACTGGAAATGAAGCCACCTCTTCATCCTCAACCCTCATACGG  
GGCAGCTGTTTCGTCATGTCAACCAATGCCAGCAGCCTCATTGGGAGTGAGTGGGAGCTGGAGATAGTAGT  
AGAGGACCAGGGAAGCCCCCTTACAGACCCAGCCCTGTTGAGGGTCATGTTTGTACCAAGTGTGGAC  
CACCTGAGGGACTCAGCCCGCAAGCCTGGGGCCTTGGAGCATGTCGATGCTGACGGTGATCTGCCTGGCTG  
TACTGTTGGGCATCTTCGGGTTGATCCTGGCTTTGTTTCATGTCCATCTGCCGGACAGAAAAGAAGGACAA  
CAGGGCCTACAAGTGTGGGAGGCGGAGTCCACCTACCGCCAGCAGCCCAAGAGGCCAGAAAACACATT  
CAGAAGGCAGACATCCACCTCGTGCCTGTGCTCAGGGGTGAGGCAGGTGAGCCTTGTGAAGTGGGCGAGT  
CCCACAAAGATGTGGACAAGGAGGCGATGATGGAAGCAGGCTGGGACCCCTGCCTGCAGGCCCTTCCA  
CCTCACCCGACCCTGTACAGGACGCTGCGTAATCAAGGCAACCAGGGAGCACCGCGGAGAGCCGAGAG  
GTGCTGCAAGACAGGTCACCTCCTTTTCAACCATCCCAGGCAGAGGAATGCCTCCCGGAGAACCTGA  
ACCTTCCCAGGCCAGCCTGCCACAGGCCAGCCACGTTCCAGGCCTCTGAAGGTTGCAGGCAGCCCCAC  
AGGGAGGCTGGCTGGAGACCAGGGCAGTGAGGAAGCCCCACAGAGGCCACCAGCCTCCTCTGCAACCCTG  
AGACGGCAGCGACATCTCAATGGCAAAGTGTCCCTGAGAAAGAATCAGGGCCCCGTGAGATCCTGCGGA  
GCCTGGTCCGGCTGTCTGTGGTGCCTTCGCCGAGCGGAACCCCGTGGAGGAGCTCACTGTGGATTCTCC  
TCCTGTTAGCAAATCTCCAGCTGCTGCCTTGTGCTGCATCAGGGCCAATTCCAGCCAAACCAACCAC  
CGAGGAAATAAGTACTTGGCCAAGCCAGGAGGCAGCAGGAGTGAATCCCAGACACAGATGGCCCAAGTG  
CAAGGGCTGGAGCCAGACAGCCAGAACAGGAGGAAGGGCCTTGGATCCTGAAGAGGACCTCTCTGT  
GAAGCAACTGCTAGAAGAAGAGCTGTCAAGTCTGCTGGACCCAGCACAGGTCTGGCCCTGGACCGGCTG  
AGCGCCCTGACCCGGCCTGGATGGCGAGACTCTTTGCCCCTACCACCAACTACCGTGACAATGTGA  
TCTCCCCGGATGCTGCAGCCACGGAGGAGCAAGGACCTTCCAGACGTTCCGCAAGGCAGAGGCACCAGA  
GCTGAGCCCAACAGGCACGAGGCTGGCCAGCACCTTTGTCTCGGAGATGAGCTCACTGCTGGAGATGCTG  
CTGGAACAGCGCTCCAGCATGCCCGTGGAGGCCGCTCCGAGGCGCTGCGGCGGCTCTCGGTCTGCGGGA  
GGACCCTCAGTTTACTTGGCCACCAGTGCAGCCTCAGGCATGAAAGTGAAGGGGACCCAGGTGGAAA  
GACGGGACTGAGGGCAAGAGCAGAGGCAGCAGCAGCAGCAGCAGGTCCTG

ACGCGTACGCGGCCGCTCGAG - GFP Tag - GTTTAA

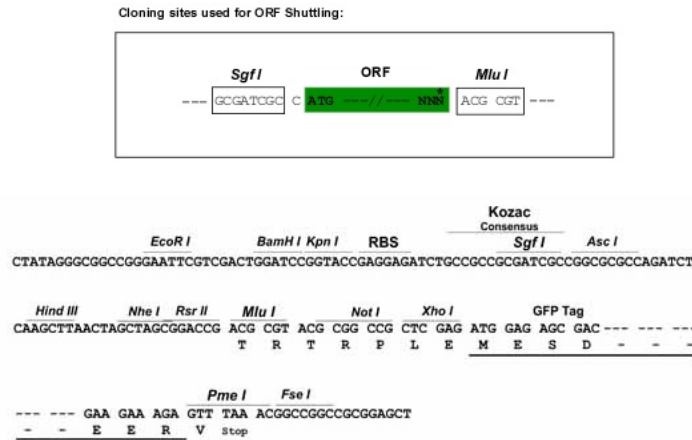
Protein Sequence: >RG223041 representing NM\_016580  
 Red=Cloning site Green=Tags(s)

```

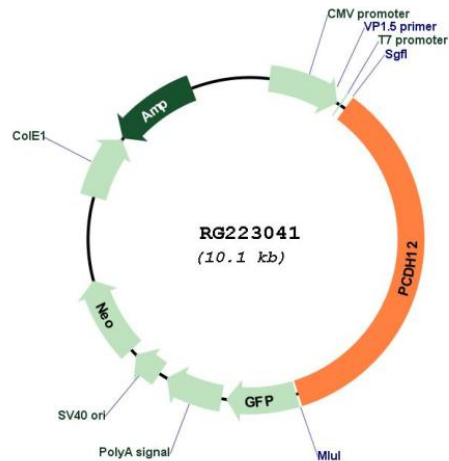
MMQLLQLLLGLLGPGGYLFLLGDCQEVTTLTVKYQVSEEVPSGTVIGKLSQELGREERRRQAGAAFVQLQ
LPQALPIQVDSEEGLLSTGRRLDREQLCRQWDPCLVSFDVLATGDLALIHVEIQVLDINDHQPRFPKGEQ
ELEISESASLRTRIPDRALDPDTGPNTLHTYTLSPSEHFALDVIVGPDETKHAELIVVKELDREIHSFF
DLVLTAYDNGNPPKSGTSLVKVNVLDSDNDNSPAFAESSLALEIQEDAAPGTLIKLTATDPDQGPNGEVE
FFLSKHMPEVLDTFSIDAKTGQVILRRPLDYEKNPAYEVDVQARDLGNPPIPAHCKVLIKVLDVNDNIP
SIHVTWASQPSLVSEALPKDSFIALVMADDLDSGHNGLVHCWLSQELGHFRLKRTNGNTYMLLTNATLDR
EQWPKYTLTLLAQDQGLQPLSAKKQLSIQISDINDNAPVFEKSRYEVSTRENNLPSLHLITIKAHADLG
INGKVSRYIQDSPVAHLVAIDSNTGEVTAQRSLNYEEMAGFEFQVIAEDSGQPMLASSVSVVWVSLLDAND
NAPEVVQPVLSDGKASLVVNSTGHLLVPIETPNGLPAGTDTPLATHSSRPFLTTIVARDADSGA
NGEPLYSIRSGNEAHLFILNPHGTQLFVNVTNASSLIGSEWELEIVVEDQGSPLQTRALLRVMFVTSVD
HLRDSARKPGALSMSMLTVICLAVLLGIFGLILALFMSICRTEKKDNRAYNCREAESTYRQPQKRPQKHI
QKADIHLVPVLRGQAGEPCEVGQSHKDVDKEAMMEAGWDPCLQAPFHLTPTLYRTLNRQGNQGAPAESRE
VLQDVTNLLFNHPRQRNASRENLNLPEQPATGQPRSRPLKVAGSPTGRLAGDQGSSEAPQRPASSATL
RRQRHLNGKVSPEKESGPRQILRSLVRLSVAFAERNPVEELTVDSPPVQQISQLLSLLHQGFQPKPNH
RGNKYLAKPGGSRAIPDTDGPSARAGGQTDPEQEEGPLDPEEDLSVKQLLEELSSLLDPSTGLALDRL
SAPDPAWMARLSLPLTTNYRDNVI SPDAAAATEEPRTFQTFGKAEAPELSPTGTRLASTFVSEMSSLLEML
LEQRSSMPVEAASEALRRLSVCGRTLSLDLATSAAAGMKVQGDGPGGKTGTGEGKSRGSSSSSRCL
    
```

TRTRPLE - GFP Tag - V

Restriction Sites: SgfI-MluI  
 Cloning Scheme:



## Plasmid Map:



ACCN: NM\_016580

ORF Size: 3552 bp

OTI Disclaimer: The molecular sequence of this clone aligns with the gene accession number as a point of reference only. However, individual transcript sequences of the same gene can differ through naturally occurring variations (e.g. polymorphisms), each with its own valid existence. This clone is substantially in agreement with the reference, but a complete review of all prevailing variants is recommended prior to use. [More info](#)

OTI Annotation: This clone was engineered to express the complete ORF with an expression tag. Expression varies depending on the nature of the gene.

Components: The ORF clone is ion-exchange column purified and shipped in a 2D barcoded Matrix tube containing 10ug of transfection-ready, dried plasmid DNA (reconstitute with 100 ul of water).

Reconstitution Method:

1. Centrifuge at 5,000xg for 5min.
2. Carefully open the tube and add 100ul of sterile water to dissolve the DNA.
3. Close the tube and incubate for 10 minutes at room temperature.
4. Briefly vortex the tube and then do a quick spin (less than 5000xg) to concentrate the liquid at the bottom.
5. Store the suspended plasmid at -20°C. The DNA is stable for at least one year from date of shipping when stored at -20°C.

RefSeq: [NM\\_016580.4](#)

RefSeq Size: 5210 bp

RefSeq ORF: 3555 bp

Locus ID: 51294

UniProt ID: [Q9NPG4](#)

Cytogenetics: 5q31.3

<b>Domains:</b>	CA
<b>Protein Families:</b>	Transmembrane
<b>Gene Summary:</b>	<p>This gene belongs to the protocadherin gene family, a subfamily of the cadherin superfamily. The encoded protein consists of an extracellular domain containing 6 cadherin repeats, a transmembrane domain and a cytoplasmic tail that differs from those of the classical cadherins. The gene localizes to the region on chromosome 5 where the protocadherin gene clusters reside. The exon organization of this transcript is similar to that of the gene cluster transcripts, notably the first large exon, but no significant sequence homology exists. The function of this cellular adhesion protein is undetermined but mouse protocadherin 12 does not bind catenins and appears to have no affect on cell migration or growth. [provided by RefSeq, Jul 2008]</p>