

Product datasheet for **RG223030**

TAGAP (NM_152133) Human Tagged ORF Clone

Product data:

Product Type:	Expression Plasmids
Product Name:	TAGAP (NM_152133) Human Tagged ORF Clone
Tag:	TurboGFP
Symbol:	TAGAP
Synonyms:	ARHGAP47; FKSG15; IDDM21; TAGAP1
Mammalian Cell Selection:	Neomycin
Vector:	pCMV6-AC-GFP (PS100010)
E. coli Selection:	Ampicillin (100 ug/mL)



[View online »](#)

ORF Nucleotide Sequence:

>RG223030 representing NM_152133
 Red=Cloning site Blue=ORF Green=Tags(s)

TTTTGTAATACGACTCACTATAGGGCGGCCGGAATTCGTCGACTGGATCCGGTACCGAGGAGATCTGCC
 GCC**CGGATCGCC**

ATGGGTGCTCTGGAGATGCAGGACGAGGAGGACAGAATCGAGGCCCTGAAACAGGTTGCAGATAAGCTCC
 CCCGGCCCAACCTCCTGCTACTCAAGCACTTGGTCTATGTGCTGCACCTCATCAGCAAGAACTCTGAGGT
 GAACAGGATGGACTCCAGCAATCTGGCCATCTGCATTGGACCAACATGCTCACCTGGAGAATGACCGAG
 AGCCTGTCATTTGAAGCCAGAAGGACCTGAACAACAAGGTGAAGACACTGGTGAATTCCTCATTGATA
 ACTGCTTTGAAATATTTGGGGAGAACATTCAGTGCATTCCAGTATCACTTCTGATGACTCCCTGGAGCA
 CACTGACAGTTGAGATGTGTCGACCTGCAGAATGACTCAGCCTACGACAGCAACGACCTGATGTGGAA
 TCCAACAGCAGCAGTGGCATCAGCTCTCCAGCAGGCAGCCCAGGTGCCATGGCCACAGCTGCTGGCT
 TGGATAGCGCGGCCACAGGATGCCCGAGAGGTGAGCCAGAGCCATTGTGAGCACCGTGGCCAGGCT
 GAAAAGCTCCCTCGCACAGCCCGATAGGAGATACTCAGAGCCAGCATGCCATCCTCCAGGAGTGCCTC
 GAGAGCCGGGTGACAAACCAACTAACAAGAGTGAAGGGGACTTCCCGTGCCCGGGTAGGCTCTC
 GTTTGAAAGTGAGGAGGCTGAAGACCCATTTCCAGAGGAGGTCTTCCCTGCAGTGAAGGCAAAACCAA
 GAGGCCGGTGGACCTGAAGATCAAGAACTTGGCCCGGGTTCGGTCTCCCGCGGGCACTGGTTCTCAA
 GCCTTCTCCAGCAGCTCGCTGGACGCGTCTCTGACAGCTCGCCCGTGGCTTCTCCTTCCAGTCCAAAA
 GAAATTTCTTCCAGCAGACATCAGTCTTTACCACAAAGACAGAGAAAGGCAAGCCAGCCGAGAAATTA
 AAAGCACTCCATGCTTTTCACTTTGCCCTCACAAAAAGTGTGACAAAAACCTCAGCGCGGGCTCT
 GGGAAATCGAAGACTTTACCAGGGACCAGTCCCGAGGGGTGTCAGAAAGGAAAGCCAGCTTGGCCGCC
 GAATCGTGCAGGAAAATGGGTGTAAACCCACAACCAACAGCCCGCGGCTTCTGCCTGAGACCCACGC
 CCTCTCGGTGGATGATGTGTTCCAGGGAGCTGACTGGGAGAGGCCTGGAAGCCACCCCTTATGAAGAG
 GCCATGCAGGGCCCGGCAGCCAGACTAGTGGCCTCCGAGAGCCAGACCGTGGGGAGCATGACGGTGGGA
 GCATGAGGGCGAGGATGCTGGAGGCGCACTGCCTCCTACCCCTCTTCCACCTGCTCACCACGTAGAGGA
 CTCAAGACACAGGGGAGCAAAGAGCCACTCCCTGGCCACGGACTCTCTCCCTGCTGAGCGATGGAAA
 CAGAGCAGAACTGTCATGCTTCTGGGGACTCTCTGGGGCAGTGTCTGGCCAGGGAGACCTGAGCTCC
 TCCCGTGAAGACCGTCTCCGAGTCCGTGCAGAGGAATAAGCGGGACTGTCTCGTGCACGATGTAGCCA
 GCCGCTTTGAGGCTGACCAATCCAATATGCCAAAGAATCGTATATT

AG**CGGACCG**ACGCGTACGCGGCCGCTCGAG - GFP Tag - GTTTAA

Protein Sequence:

>RG223030 representing NM_152133
 Red=Cloning site Green=Tags(s)

MGALEMQDEEDRIEALKQVADKLRPNLLLLKHLVYVHLHLSKNSEVNRMDSSNLAICIGPNMLTLENDQ
 SLSFEAQKDLNKNKVKTLVEFLIDNCFEIFGENIPVHSSITSDDSLEHTDSSDVSTLQNDAYSNDPVE
 SNSSSGISSPSRQPQVPMATAAGLDSAGPQDAREVSPEPIVSTVARLKSSLAQPDRRYSESPMPSSQECL
 ESRVTNQTTLKSEGFVPRVGRLESEEAEDPFPEEVFPAVQGKTKRPVDLKIKNLAPGSVLPRALVLK
 AFSSSSLDASSDSSPVASPPSKRNFFSRHQSFSTTKTEKGKPSREIKKHSMSFTFAPHKKVLTKNLSAGS
 GKSQDFTRDHVPRGVRKESQLAGRIVQENGCEHNQTARGFCLRPHALSVDDVFQGADWERPGSPPSYEE
 AMQGPAAARLVASESQTVGSM TVGSMRARMLEAHCLLPPLPPAHHVEDSRHRGSKEPLPGHGLSPLPERWK
 QSRTVHASGDSLGHVSGPGRPELLPLRTVSESVQRNKRDCLVRRCSQPVFADQFYAKESYI

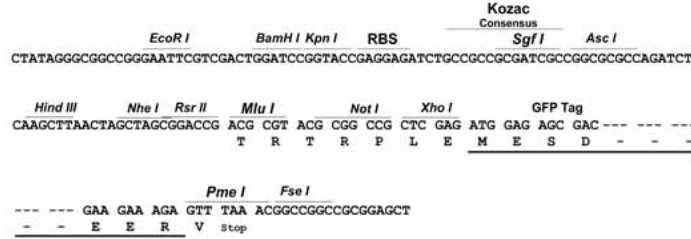
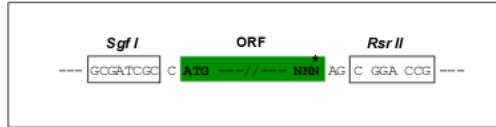
SGP**TRRRLE** - GFP Tag - V

Restriction Sites:

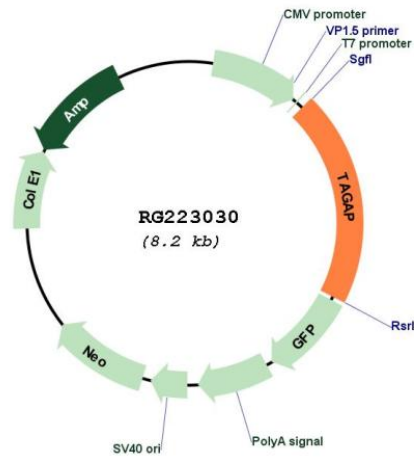
Sgfl-RsrII

Cloning Scheme:

Cloning sites used for ORF Shuttling:



Plasmid Map:



ACCN:	NM_152133
ORF Size:	1659 bp
OTI Disclaimer:	The molecular sequence of this clone aligns with the gene accession number as a point of reference only. However, individual transcript sequences of the same gene can differ through naturally occurring variations (e.g. polymorphisms), each with its own valid existence. This clone is substantially in agreement with the reference, but a complete review of all prevailing variants is recommended prior to use. More info
OTI Annotation:	This clone was engineered to express the complete ORF with an expression tag. Expression varies depending on the nature of the gene.
Components:	The ORF clone is ion-exchange column purified and shipped in a 2D barcoded Matrix tube containing 10ug of transfection-ready, dried plasmid DNA (reconstitute with 100 ul of water).
Reconstitution Method:	<ol style="list-style-type: none">1. Centrifuge at 5,000xg for 5min.2. Carefully open the tube and add 100ul of sterile water to dissolve the DNA.3. Close the tube and incubate for 10 minutes at room temperature.4. Briefly vortex the tube and then do a quick spin (less than 5000xg) to concentrate the liquid at the bottom.5. Store the suspended plasmid at -20°C. The DNA is stable for at least one year from date of shipping when stored at -20°C.
RefSeq:	NM_152133.2
RefSeq Size:	3196 bp
RefSeq ORF:	1662 bp
Locus ID:	117289
UniProt ID:	Q8N103
Cytogenetics:	6q25.3
Gene Summary:	This gene encodes a member of the Rho GTPase-activator protein superfamily. The encoded protein may function as a Rho GTPase-activating protein. Alterations in this gene may be associated with several diseases, including rheumatoid arthritis, celiac disease, and multiple sclerosis. Alternate splicing results in multiple transcript variants encoding distinct isoforms. [provided by RefSeq, Jul 2013]