

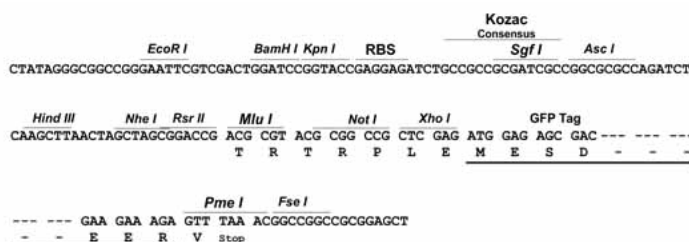
## Product datasheet for RG223019

### SLC22A14 (NM\_004803) Human Tagged ORF Clone

#### Product data:

Product Type:	Expression Plasmids
Product Name:	SLC22A14 (NM_004803) Human Tagged ORF Clone
Tag:	TurboGFP
Symbol:	SLC22A14
Synonyms:	OCTL2; OCTL4; ORCTL4
Mammalian Cell Selection:	Neomycin
Vector:	pCMV6-AC-GFP (PS100010)
E. coli Selection:	Ampicillin (100 ug/mL)
Restriction Sites:	AscI-MluI
Cloning Scheme:	

Cloning sites used for ORF Shuttling:



ACCN: NM\_004803

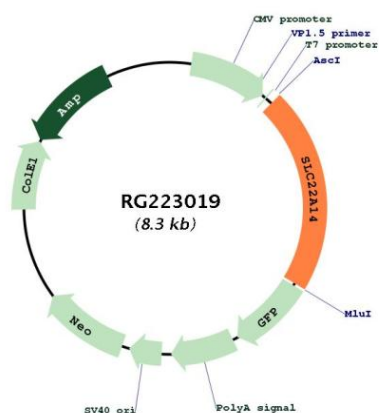
ORF Size: 1782 bp



[View online »](#)

<b>OTI Disclaimer:</b>	<p>Due to the inherent nature of this plasmid, standard methods to replicate additional amounts of DNA in E. coli are highly likely to result in mutations and/or rearrangements. Therefore, OriGene does not guarantee the capability to replicate this plasmid DNA. Additional amounts of DNA can be purchased from OriGene with batch-specific, full-sequence verification at a reduced cost. Please contact our customer care team at <a href="mailto:custsupport@origene.com">custsupport@origene.com</a> or by calling 301.340.3188 option 3 for pricing and delivery.</p> <p>The molecular sequence of this clone aligns with the gene accession number as a point of reference only. However, individual transcript sequences of the same gene can differ through naturally occurring variations (e.g. polymorphisms), each with its own valid existence. This clone is substantially in agreement with the reference, but a complete review of all prevailing variants is recommended prior to use. <a href="#">More info</a></p>
<b>OTI Annotation:</b>	This clone was engineered to express the complete ORF with an expression tag. Expression varies depending on the nature of the gene.
<b>Components:</b>	The ORF clone is ion-exchange column purified and shipped in a 2D barcoded Matrix tube containing 10ug of transfection-ready, dried plasmid DNA (reconstitute with 100 ul of water).
<b>Reconstitution Method:</b>	<ol style="list-style-type: none"> <li>1. Centrifuge at 5,000xg for 5min.</li> <li>2. Carefully open the tube and add 100ul of sterile water to dissolve the DNA.</li> <li>3. Close the tube and incubate for 10 minutes at room temperature.</li> <li>4. Briefly vortex the tube and then do a quick spin (less than 5000xg) to concentrate the liquid at the bottom.</li> <li>5. Store the suspended plasmid at -20°C. The DNA is stable for at least one year from date of shipping when stored at -20°C.</li> </ol>
<b>RefSeq:</b>	<a href="#">NM_004803.2</a> , <a href="#">NP_004794.1</a>
<b>RefSeq Size:</b>	2201 bp
<b>RefSeq ORF:</b>	1785 bp
<b>Locus ID:</b>	9389
<b>UniProt ID:</b>	<a href="#">Q9Y267</a>
<b>Cytogenetics:</b>	3p22.2
<b>Protein Families:</b>	Transmembrane
<b>Gene Summary:</b>	<p>This gene encodes a member of the organic-cation transporter family. It is located in a gene cluster with another member of the family, organic cation transporter like 3. The encoded protein is a transmembrane protein which is thought to transport small molecules and since this protein is conserved among several species, it is suggested to have a fundamental role in mammalian systems. Alternative splicing results in multiple transcript variants. [provided by RefSeq, Feb 2016]</p>

## Product images:



Circular map for RG223019