

Product datasheet for **RG223018**

GCOM1 (NM_001018090) Human Tagged ORF Clone

Product data:

Product Type:	Expression Plasmids
Product Name:	GCOM1 (NM_001018090) Human Tagged ORF Clone
Tag:	TurboGFP
Symbol:	GCOM1
Synonyms:	gcom; Gcom2; GRINL1A; MYZAP; MYZAP-POLR2M
Mammalian Cell Selection:	Neomycin
Vector:	pCMV6-AC-GFP (PS100010)
E. coli Selection:	Ampicillin (100 ug/mL)



[View online »](#)

ORF Nucleotide Sequence:

>RG223018 representing NM_001018090
 Red=Cloning site Blue=ORF Green=Tags(s)

TTTTGTAATACGACTCACTATAGGGCGGCCGGGAATTCGTCGACTGGATCCGGTACCGAGGAGATCTGCC
 GCC**CGGATCGCC**

ATGCTGCGCTCCACGTCCACGGTACCCTGCTCTCGGGCGGCCGCCAGGACGCCCGGGCGCCAGCA
 GGAGGGCAAATGTTTGCAGACTACGGCTGACCGTACCTCCTGAGAGTCCAGTTCTGAGCAATGTGAAAA
 GAAGATTGAGAGAAAAGAGCAGCTTCTTACCTGAGCAATGGAGAACCCTACCAGGAACTTCTCAGGGT
 GTTGTATTATGGTGTGGTGCAGATCAGATCAAAATCAGCAGAAAAGAAATGGTGGTGTATGGGTGGTCCA
 CCAGTCAGCTGAAAGAAGAGATGAACTACATCAAAGATGTGAGAGCCACTTTGGAAAAGGTGAGAAAAGC
 AATGTATGGAGACTATGATGAGATGAGACAGAAGATTCGACAGCTCACCCAGGAACTATCAGTTTCCCAT
 GCTCAGCAGGAGTATCTGGAGAATCACATCCAAACCCAGTCGTCTGCCCTGGATCGTTTTAATGCCATGA
 ACTCAGCCTTGGCATCAGATTCCATTGGCCTGCAAAAAACCCCTCGTGGATGTGACTTTGGAAAACAGCAA
 CATTAAGGATCAAATCAGAAATCTGCAGCAGACGTATGAAGCATCCATGGACAAGCTGAGGGAAAAGCAG
 AGGCAGTTGGAGGTAGCGCAAGTTGAAAACCAGCTGCTAAAAATGAAGGTGGAATCGTCCCAAGAAGCCA
 ATGCTGAGGTGATGCGAGAGATGACCAAGAAGCTGTACAGCCAGTATGAGGAGAAGCTGCAGGAAGAACA
 GAGGAAGCACAGTCTGAGAAGGAGGCTCTTTGGAAAGAAACCAATAGTTTTCTGAAAGCGATTGAAGAA
 GCCAATAAAAAGATGCAAGCAGCAGAGATCAGCCTAGAGGAGAAAAGACCAGAGGATCGGGGAGCTGGACA
 GGCTGATTGAGCGCATGGAAAAGGAACGTCATCAACTGCAACTTCAACTCCTAGAACATGAAACAGAAAT
 GTCTGGGAGTTAACTGATTCTGACAAGGAAAGGTATCAGCAGTTGGAGGAGGCATCAGCCAGCCTCCGT
 GAGCGGATCAGACACCTAGATGACATGGTGCATTGCCAGCAGAAGAAAGTCAAGCAGATGGTCGAGGAGA
 TTGAATCATTAAAGAAAAGTTGCAACAGAAAACAGCTCTTAATACTGCAGCTTTTAGAAAAGATATCTTT
 CTTAGAAGGAGAGAATAATGAACACAAAAGCAGGTTGGACTATTTAACAGAAAACCCAGGCCAAGACTGAA
 GTGAAAACCAGAGAGATAGGAGTGGGCTGTGATCTTCTACCCAGTTACTTTTGACAAAATGATTCAT
 CTAGTCATTGCCAGAAGAGTGGGCTCCTATTTCTCAGAAGAGCGGGCGGCAGGGATAAGCAGCATCT
 TGATGACATCACAGCAGCTCGGCTTCTACCACTTACCATATGCCACGCAGCTGCTCTCCATAGAAGAA
 TCCTTGGCACTTCAAGAACAGCAGAAAACAGAAATTATGAGGAGATGCAAGCAAAGCTCGCAGCGCAAAAAT
 TAGCTGAAAGACTGAATATTAATGCGGAGTTATAATCCAGAAGGGAGTCTTCAGGGAGATACCGAGA
 AGTAAGGGATGAAGATGACGATTGGTCTCTGATGAATC

ACGCGTACGCGGCCGCTCGAG – GFP Tag – GTTTAA

Protein Sequence:

>RG223018 representing NM_001018090
 Red=Cloning site Green=Tags(s)

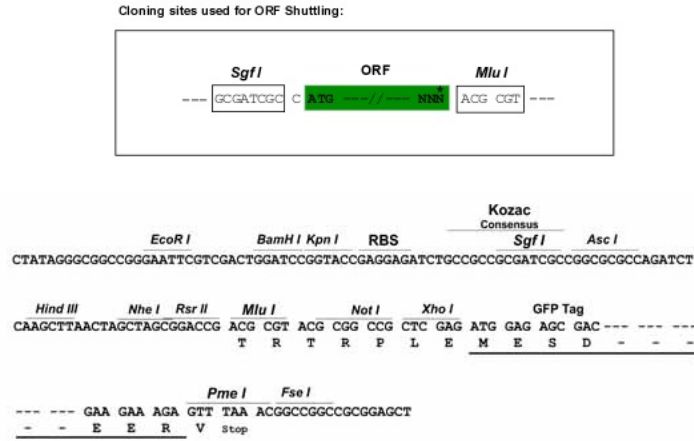
MLRSTSTVTL LSGGAARTPGAPSRANVCRRLRLTVPPESPVPPEQCEKKIERKEQLLDL SNGEPTRKLPQG
 VVYGVVRRSDQNQQKEMVYVWSTSQLKEEMNYIKDVRATLEKVRKRMYG DYDEMROKIRQLTQELSVSH
 AQQEYLENHIQTQSSALDRFNAMNSALASDSIGLQKTLVDVTL ENSNIKDQIRNLQQT YEASMDKLREKQ
 RQLEVAQVENQLLKMVVESSQEANA EVMREMTKKL YSYEEKLQEEQRKHS AEKEALLEETNSFLK AIEE
 ANKMMQAAEISLEEKDQRIGELDRLIERMEKERHQLQLLLEHETEM SGELTDS DKERYQQLEEASASLR
 ERIRHLDDMVHCQKQKVKQMVVEIESLKKKLQKQLLILQLLEKISFLE GENNELQSRLDYL TETQAKTE
 VETREIGVGCDLLPRLPFRQNDSSSHCQKSGSPISSEERRRRDKQHLDDIT AARLLPLHHMPTQLLSIEE
 SLALQKQKQNYEEMQAKLAAQKLAERLNIKMRSYNPEGESSGRYREVRDEDDWSSDEF

TRTRPLE – GFP Tag – V

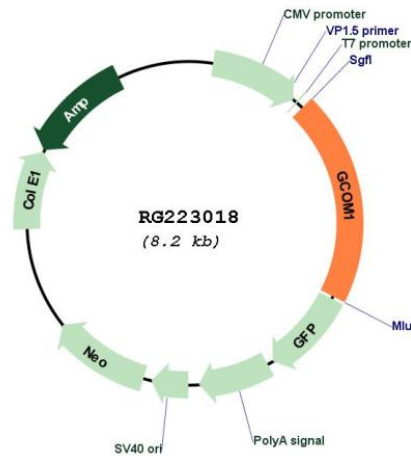
Restriction Sites:

Sgfl-MluI

Cloning Scheme:



Plasmid Map:



ACCN:	NM_001018090
ORF Size:	1650 bp
OTI Disclaimer:	<p>Due to the inherent nature of this plasmid, standard methods to replicate additional amounts of DNA in E. coli are highly likely to result in mutations and/or rearrangements. Therefore, OriGene does not guarantee the capability to replicate this plasmid DNA. Additional amounts of DNA can be purchased from OriGene with batch-specific, full-sequence verification at a reduced cost. Please contact our customer care team at custsupport@origene.com or by calling 301.340.3188 option 3 for pricing and delivery.</p> <p>The molecular sequence of this clone aligns with the gene accession number as a point of reference only. However, individual transcript sequences of the same gene can differ through naturally occurring variations (e.g. polymorphisms), each with its own valid existence. This clone is substantially in agreement with the reference, but a complete review of all prevailing variants is recommended prior to use. More info</p>
OTI Annotation:	This clone was engineered to express the complete ORF with an expression tag. Expression varies depending on the nature of the gene.
Components:	The ORF clone is ion-exchange column purified and shipped in a 2D barcoded Matrix tube containing 10ug of transfection-ready, dried plasmid DNA (reconstitute with 100 ul of water).
Reconstitution Method:	<ol style="list-style-type: none"> 1. Centrifuge at 5,000xg for 5min. 2. Carefully open the tube and add 100ul of sterile water to dissolve the DNA. 3. Close the tube and incubate for 10 minutes at room temperature. 4. Briefly vortex the tube and then do a quick spin (less than 5000xg) to concentrate the liquid at the bottom. 5. Store the suspended plasmid at -20°C. The DNA is stable for at least one year from date of shipping when stored at -20°C.
RefSeq:	NM_001018090.4
RefSeq Size:	4664 bp
RefSeq ORF:	1653 bp
Locus ID:	145781
UniProt ID:	P0CAP1
Cytogenetics:	15q21.3
Protein Families:	Druggable Genome

Gene Summary:

This locus represents naturally occurring readthrough transcription between the neighboring MYZAP (myocardial zonula adherens protein) and POLR2M (polymerase (RNA) II (DNA directed) polypeptide M) genes on chromosome 15. Alternative splicing results in multiple readthrough transcript variants. Readthrough variants may encode proteins that share sequence identity with the upstream gene product or with both the upstream and downstream gene products. Some readthrough transcript variants are also expected to be candidates for nonsense-mediated decay (NMD). [provided by RefSeq, Oct 2013]