

Product datasheet for **RG223014**

SEC61G (NM_001012456) Human Tagged ORF Clone

Product data:

Product Type: Expression Plasmids
Product Name: SEC61G (NM_001012456) Human Tagged ORF Clone
Tag: TurboGFP
Symbol: SEC61G
Synonyms: SSS1
Mammalian Cell Selection: Neomycin
Vector: pCMV6-AC-GFP (PS100010)
E. coli Selection: Ampicillin (100 ug/mL)
ORF Nucleotide Sequence: >RG223014 representing NM_001012456
Red=Cloning site **Blue**=ORF **Green**=Tags(s)

TTTTGTAATACGACTCACTATAGGGCGGCCGGAATTCGTCGACTGGATCCGGTACCGAGGAGATCTGCC
GCC**CGATCGCC**

ATGGATCAGGTAATGCAGTTTGTGAGCCAAGTCGGCAGTTTGTAAAGGACTCCATTCGGCTGGTTAAAA
GATGCACTAAACCTGATAGAAAAGAATTCCAGAAGATTGCCATGGCAACAGCAATAGGATTTGCTATAAT
GGGATTCATTGGCTTCTTTGTGAAATTGATCCATATTCTATTAATAACATCATTGTTGGTGGC

ACGCGTACGCGGCCGCTCGAG - GFP Tag - GTTTAA

Protein Sequence: >RG223014 representing NM_001012456
Red=Cloning site **Green**=Tags(s)

MDQVMQFVEPSRQFVKDSIRLVKRCTKPDRKEFQKIAMATAIGFAIMGFIGFFVKLIHIPINNIIVGG

TRTRPLE - GFP Tag - V

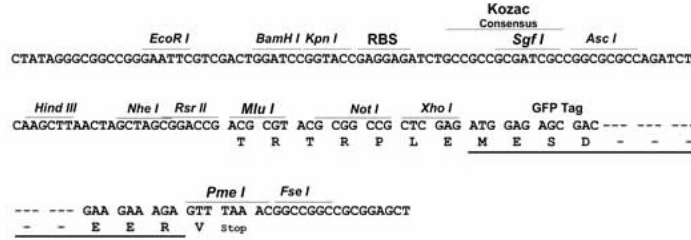
Restriction Sites: Sgfl-MluI



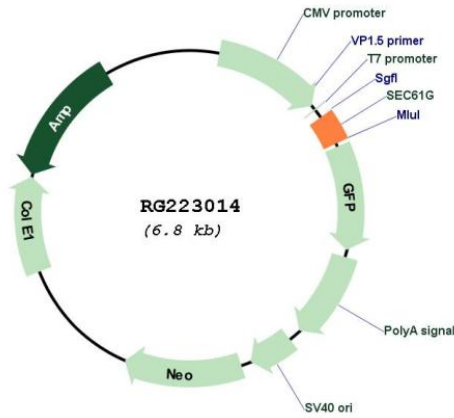
[View online »](#)

Cloning Scheme:

Cloning sites used for ORF Shutting:



Plasmid Map:



ACCN: NM_001012456

ORF Size: 204 bp

OTI Disclaimer:	The molecular sequence of this clone aligns with the gene accession number as a point of reference only. However, individual transcript sequences of the same gene can differ through naturally occurring variations (e.g. polymorphisms), each with its own valid existence. This clone is substantially in agreement with the reference, but a complete review of all prevailing variants is recommended prior to use. More info
OTI Annotation:	This clone was engineered to express the complete ORF with an expression tag. Expression varies depending on the nature of the gene.
Components:	The ORF clone is ion-exchange column purified and shipped in a 2D barcoded Matrix tube containing 10ug of transfection-ready, dried plasmid DNA (reconstitute with 100 ul of water).
Reconstitution Method:	<ol style="list-style-type: none">1. Centrifuge at 5,000xg for 5min.2. Carefully open the tube and add 100ul of sterile water to dissolve the DNA.3. Close the tube and incubate for 10 minutes at room temperature.4. Briefly vortex the tube and then do a quick spin (less than 5000xg) to concentrate the liquid at the bottom.5. Store the suspended plasmid at -20°C. The DNA is stable for at least one year from date of shipping when stored at -20°C.
RefSeq:	NM_001012456.1 , NP_001012474.1
RefSeq Size:	480 bp
RefSeq ORF:	207 bp
Locus ID:	23480
UniProt ID:	P60059
Cytogenetics:	7p11.2
Protein Families:	Transmembrane
Protein Pathways:	Vibrio cholerae infection
Gene Summary:	The Sec61 complex is the central component of the protein translocation apparatus of the endoplasmic reticulum (ER) membrane. Oligomers of the Sec61 complex form a transmembrane channel where proteins are translocated across and integrated into the ER membrane. This complex consists of three membrane proteins- alpha, beta, and gamma. This gene encodes the gamma-subunit protein. Alternatively spliced transcript variants encoding the same protein have been identified. [provided by RefSeq, Jul 2008]