

Product datasheet for **RG223002**

BRD8 (NM_139199) Human Tagged ORF Clone

Product data:

Product Type:	Expression Plasmids
Product Name:	BRD8 (NM_139199) Human Tagged ORF Clone
Tag:	TurboGFP
Symbol:	BRD8
Synonyms:	p120; SMAP; SMAP2
Mammalian Cell Selection:	Neomycin
Vector:	pCMV6-AC-GFP (PS100010)
E. coli Selection:	Ampicillin (100 ug/mL)
ORF Nucleotide Sequence:	>RG223002 representing NM_139199 Red=Cloning site Blue=ORF Green=Tags(s)

TTTTGTAATACGACTCACTATAGGGCGGCCGGAATTCGTCGACTGGATCCGGTACCGAGGAGATCTGCC
GCC**CGATCGCC**

ATGGCGACGGGAACGGGCAAACACAAGCTGCTAAGCACTGGCCCCACAGAGCCATGGTCCATCCGAGAGA
AGCTATGTTTAGCATCTTCTGTCATGAGAAGTGGCGATCAAAATTGGGTATCAGTTAGCAGAGCAATCAA
GCCCTTTCGAGAACCTGGCCGCCCTCCAGACTGGTTCTCTCAAAAACATTGTGCTCCCAGTACTCGGAG
CTTTTAGAGACCACTGAGACACCAAAACGAAACGAGGTGAAAAGGAGAAGTGGTGAAACTGTTGAAG
ATGTTATTGTTTCGAAATTGACTGCTGAGCGAGTTGAAGAATAAAGAAAGTGATAAAGGAAACCCAGGA
GAGATATAGACGGCTAAAGAGAGATGCAGAATAATTCAAGCTGGACACATGGACAGCAGACTGGATGAG
CTTTGCAATGACATTGCAACGAAAAAGAAATTGGAAGAAGAGGAGGCTGAAGTAAAGAGGAAGGCTACAG
ATGCTGCATACCAGGCTCGTCAAGCAGTAAAAACACCCCCGGAGGTTACCCACTGTGATGGTTCGCTC
TCCTATAGATTCTGCCTCCCCAGGAGGTGATTATCCACTTGGGGACTTGACTCCAACCACTATGGAAGAG
GCTACCTCTGGGGTCAATGAGAGTGAAATGGCTGTGGCTTCTGGCCACCTGAACAGTACAGGTGCTCCTCC
TGGAGGTAGGCGGGTCTTCCCATGATACATGGTGGGGAGATACAGCAAACACCAATACTGTTGCAGC
CTCCCCTGCTGCATCAGGTGCTCCCACTCTTCCCGCTTTTGAAGCTGGTCTACACAGTTACCACACA
CCTCTTGCTTCTCACTACTGTTGCCAGTGAGCCTCCAGTTAACTTGTGCCACCCCTGTAGAGTCTG
TGTCCTCAAGCTACCATTGTCATGATGCCTGCGCTGCCAGCACCATCCTCTGCTCCGGCTGTCTCCACTAC
TGAAAGTGTAGCTCCAGTGAGTCAACCCGACAACCTGTGTTCCCATGGAGGCTGTGGGGATCCACATACT
GTGACTGTTTCCATGGACAGCAGTGAAATATCCATGATCATCAATTCTATCAAAGAAGAGTGTTCGAT
CAGGGGTAGCAGAGGCTCCTGTTGGATCAAAGGCTCCCAGCATAGATGGGAAGGAAGAAATTAGATCTGGC
TGAGAAGATGGATATTGCTGTGTCTTACACAGGTGAAGAGCTGGATTTTGAGACTGTTGGAGACATCATT
GCCATCATTGAGGACAAGGTAGATGATCCTGAAGTGTGGATGTGCCAGCAGTGAAGCAGCACTGT
CATTTTGTGAAGAAAATGATGATCCTCAGTCCCTGCCTGGCCCTGGGAGCATCCTATCCAGCAGGAGCG
GGACAAGCCAGTACCTCTCCCTGCACCAGAAATGACGGTCAAGCAAGAGAGACTGGACTTTGAGGAAACG



[View online »](#)

GAAAACAAGGAATACATGAACTGGTGGACATCAGGGAGCCCAGTGCAGAGATCAAGGTGGAACCTGCAG
AACCCAGAGCCAGTCATTTTCAGGAGCCGAAATAGTAGCTGGAGTTGTTCCAGCCACAAGTATGGAGCCACC
AGAAGCTCAGGAGTCCAGGACTTAGATGAGGAACTGGGAAGTACTGCAGCTGGAGAGATTGTTGAAGCAGAT
GTTGCCATTGGGAAAGGCGATGAGACTCCACTTACAAATGTGAAGACAGAGGCATCCCCTGAAAGCATGT
TGTCTCCATCACATGGCTCAAATCCCATTGAAGATCCTTAGAGGCAGAGACTCAGCACAAGTTTGAAT
GTCAGACTCATTGAAAGAAGAATCAGGGACTATTTTTGGAAGCCAGATAAAGGATGCCCCAGGTGAGGAT
GAGGAGGAAGATGGTGTGAGTGAAGCGGCCAGCCTAGAGGAGCCTAAGGAAGAGGATCAAGGAGAAGGCT
ACTTGTGAGAAATGGATAATGAACCTCCTGTGAGCGAGAGTGATGATGGCTTCAGCATACACAATGCTAC
ACTGCAGTCACACACACTGGCAGACTCCATCCCCAGCAGCCCTGCTTCTTACAGTTCTCTGTCTGTAGT
GAGGATCAGGAAGCTATTCAGGCACAGAAAATTTGGAAGAAAGCCATCATGCTTGTATGGAGAGCTGCAG
CTAATCATAGGTATGCCAATGTCTTCTGCAGCCTGTTACAGATGACATAGCACCTGGCTACCACAGCAT
TGTGCAGAGGCCATGGATTTGTCAACTATTAAGAAAAACATAGAAAATGGACTGATCCGAAAGCACAGCT
GAATTTACAGCGTACATTATGCTGATGTTTCAGAAATGCTGTAATGTACAATAGCTCAGACCATGATGCT
ATCACATGGCAGTGGAGATGCAGCGAGATGCTTGGAAACAGATCCAGCAATTCCTGGCCACGCGATTGAT
TATGCAAAACATCCGAGTCTGGGATCAGTGCTAAAAGTCTTCGAGGGAGAGATTCTACCCGAAACAGGAT
GCTTCAGAGAAGGACAGTGTCCCAATGGGCTCTCTGCCTTCTTCTCTCTCTTTATGGGACACGAGT
GGGTTTGGCTGGATTCTGAACAAGATCATCCCAATGACTCTGAGTTGAGCAATGACTGCAGGTCCCTCTT
CAGCTCATGGGACTCCAGTCTGGATCTTGTATGTGGGCAACTGGAGGGAAACTGAGGATCCAGAGGCTGAG
GAACTAGAGGAAAGCAGCCCGGAGAGAGAACCTAGTGAAGTCTTGTGGGGATGGAGGCAGTGAGGAAT
CTCAGGAAGCGGCAAGGAAAGCCAGCCACCAGAACCTCCTCCACTTTCTCTCTGAGGTAGCTTATTTAAT
GGAGCCCTTGTGCATCAGCAGCAACGAATCAAGTGAAGGCTGCTGCCCTCCATCTGGTACCAGACAAGAA
GGAAGGGAAATTAAGCTAGCGAAGGAGAAAGGGAGCTCTGCAGAGAGACTGAAGAGCTTTCAGCTAAAG
GAGACCCCTTAGTAGCTGAAAAGCCACTGGGAGAAAAATGGAAGCCAGAGGTGGCTTCAGCTCCCTCAGT
TATTTGTACAGTTCAGGGACTACTCACAGAGAGTGAAGAGGGGGAGGCTCAGCAAGAATCCAAAGGGGAG
GACCAGGGTGAAGTATATGTGTGAGAGATGGAAGACCAGCCCTTCAGGCGAGTGTGATGATGCCTTTA
ACATTAAGGAGACTCCCTTGGTGGATACACTTTTCAGCCATGCTACCTCCTCAAAGCTGACTGATCTAAG
CCAGGATGACCCTGTTCCAGGATCATTTGCTATTTAAGAAGACTCTCCTGCCAGTCTGGAAGATGATTGCC
AGTCACAGGTTCCAGCAGTCCATTTCTGAAGCCTGTGTGAGAAAGGCAGGCCCCAGGGTACAAGGATGTGG
TGAAAAGACCCATGGACTTAAGTACCTGAAGAGAAATCTCTCTAAGGGTCGGATTTCGACCATGGCCCA
ATTCCTGCGAGACCTGATGCTGATGTTCCAAAATGCTGTAATGTACAATGACTCTGATCATCATGTATAC
CATATGGCTGTGGAGATGCGGCGAGAAGTCTGGAGCAGATTGAGTACTGAATATCTGGTTAGACAAA
GAAAAGGCTCAAGTAGTCTGGAAGGAGAACCAGCTAACCCAGTGGATGATGGAAAACCTGTTTTTC

ACGCGTACGCGGCCGCTCGAG - GFP Tag - GTTTAA

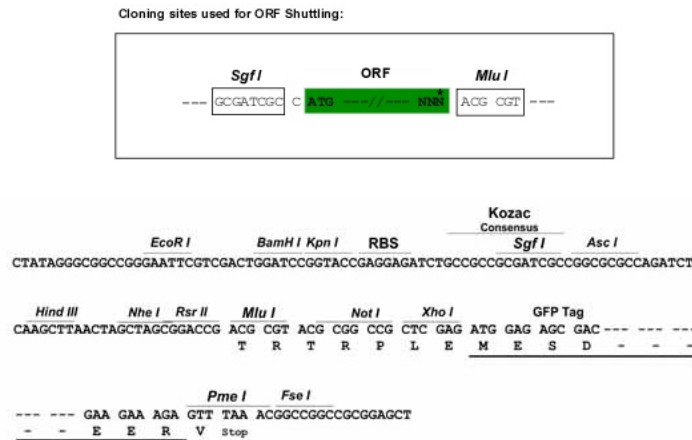
Protein Sequence: >RG223002 representing NM_139199
 Red=Cloning site Green=Tags(s)

MATGTGKHKLLSTGPTEPWSIREKLCLASSVMRSGDQNWVSVSRAIKPFAEPGRPPDWFSSQKHCASQYSE
 LLETTETPKRKRGEKGEVVETVEDVIVRKLTAERVEELKKVIKETQERYRRLKRDAELIQAGHMDSRLDE
 LCNDIATKKKLEEEAEVKRKATDAAYQARQAVKTPRRLPTVMVRSPIDSASPGGDYPLGDLTPTTME
 ATSGVNESEMAVASGHLNSTGVLLLEVGGVLPMIHGGEIQQTPTNTVAASPAASGAPTLRRLLEAGPTQFTT
 PLASFTTVASEPPVKLVPPPVSQATIVMMPALPAPSSAPAVSTTESVAPVSQPDNCVPMEAVGDPHT
 VTVSMDSEISMIINSIKEECFRSGVAEAPVGSKAPSIDGKEELDIAEKMDIAVSYTGEELDFETVGDII
 AIIEDKVDDHPEVLDVAAVEAALSFCENDDPQSLPGPWEHPIQQERDKVPLPAPEMTVKQERLDFEET
 ENKGIHELVDIREPSAEIKVEPAEPEPVISGAEIVAGVVPATSMPEPPELRSQDLDEELGSTAAGEIVEAD
 VAIGKGDETPLTNVKTEASPESMLSPSHGSPNIEDPLEAETQHKFEMSDSLKEESGTFGSGIKDAPGED
 EEEDGVSEAAASLEEKEDQGGYLSEMDNEPPVSESDDGFSIHNATLQSHTLADSISSPASSQFVSCS
 EDQEAIQAQKIWKKAIMLVWRAAANHRYANVFLQPVTDIAPGYHSIVQRPMDLSTIKKNIENGLIRSTA
 EFQRDIMLMFQNAVMYNSSDHDVYHMAVEMQRDVLEQIQQLATQLIMQTSSESGISAKSLRGRDSTRKQD
 ASEKDSVPMGSPAFLLSLFMGHEWVWLDSEQDHPNDELNDCRSLFSSWDSLDLVDVGNWRETDPEAE
 ELEESSPEREPSELLVGGGSEESQEAARKASHQNLHFLSEVAYLMEPLCISSNESSEGCCPPSGTRQE
 GREIKASEGERELCRETEELSAKGDPLVAEKPLGENGKPEVASAPSVICTVQGLL TESEEGEAQQESKGE
 DQGEVYVSEMEDQPPSGECDDAFNIKETPLVDTLF SHATSSKL TDLSQDDPVQDHL LFKKTL LPVWKMI
 A SHRFSSPFLKPVSERQAPGYKDVVKRPMDL TSLKRNL SKGRIRTMAQFLRDLMLMFQNAVMYNDSHDHVV
 HMAVEMRREVLEQIQVLNIWLDKRKGSSSLEGEANPVDDGKPVF

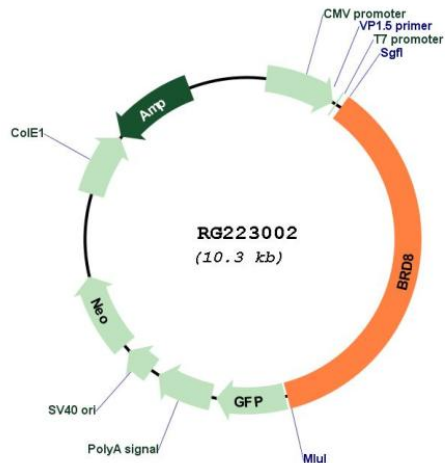
TRTRPLE - GFP Tag - V

Restriction Sites: SgfI-MluI

Cloning Scheme:



Plasmid Map:



ACCN: NM_139199

ORF Size: 3705 bp

OTI Disclaimer: The molecular sequence of this clone aligns with the gene accession number as a point of reference only. However, individual transcript sequences of the same gene can differ through naturally occurring variations (e.g. polymorphisms), each with its own valid existence. This clone is substantially in agreement with the reference, but a complete review of all prevailing variants is recommended prior to use. [More info](#)

OTI Annotation: This clone was engineered to express the complete ORF with an expression tag. Expression varies depending on the nature of the gene.

Components: The ORF clone is ion-exchange column purified and shipped in a 2D barcoded Matrix tube containing 10ug of transfection-ready, dried plasmid DNA (reconstitute with 100 ul of water).

Reconstitution Method:

1. Centrifuge at 5,000xg for 5min.
2. Carefully open the tube and add 100ul of sterile water to dissolve the DNA.
3. Close the tube and incubate for 10 minutes at room temperature.
4. Briefly vortex the tube and then do a quick spin (less than 5000xg) to concentrate the liquid at the bottom.
5. Store the suspended plasmid at -20°C. The DNA is stable for at least one year from date of shipping when stored at -20°C.

RefSeq: [NM_139199.1](#), [NP_631938.1](#)

RefSeq Size: 4074 bp

RefSeq ORF: 3708 bp

Locus ID: 10902

UniProt ID: [Q9H0E9](#)

Cytogenetics: 5q31.2

Protein Families: Druggable Genome, Transcription Factors

Gene Summary: The protein encoded by this gene interacts with thyroid hormone receptor in a ligand-dependent manner and enhances thyroid hormone-dependent activation from thyroid response elements. This protein contains a bromodomain and is thought to be a nuclear receptor coactivator. Multiple alternatively spliced transcript variants that encode distinct isoforms have been identified. [provided by RefSeq, Jul 2014]