

## Product datasheet for **RG222974**

### ASAHL (NAAA) (NM\_001042402) Human Tagged ORF Clone

#### Product data:

Product Type:	Expression Plasmids
Product Name:	ASAHL (NAAA) (NM_001042402) Human Tagged ORF Clone
Tag:	TurboGFP
Symbol:	ASAHL
Synonyms:	ASAHL; PLT
Mammalian Cell Selection:	Neomycin
Vector:	pCMV6-AC-GFP (PS100010)
E. coli Selection:	Ampicillin (100 ug/mL)
ORF Nucleotide Sequence:	>RG222974 representing NM_001042402 Red=Cloning site Blue=ORF Green=Tags(s)

TTTTGTAATACGACTCACTATAGGGCGGCCGGAATTCGTCGACTGGATCCGGTACCGAGGAGATCTGCC  
GCC**CGATCGCC**

ATGCGGACCGGGACCGGGAGGCGCGCCGGGGCTTCCGTCCTGCTGCTGCTGCTGGCCGGGGCCG  
GGCTGTCAGCCGCTCGCCCCAGCAGCGCCGCGCTTCAACGTGAGCCTGGACTCGGTCCCCGAGCTGCG  
CTGGCTGCCCGTGTGCGGCACTACGACTTGGACTTGGTGCAGCGCCGATGGCGCAAGTCATCGGGGAC  
AGAGTCCCAAGTGGGTGCACGTGTTAATCGGAAAAGTGGTCTGGAGCTGGAGCGCTTCTGCCCCAGC  
CCTTACCAGCGAGATCCGCGCATGTGTGACTTCATGAACCTCAGCCTGGCGGACTGCCTTCTGGTCAA  
CCTGGCCTACGAGTCTCGTGTTCGACACAGTATTGTGGCTCAAGACTCCAGAGGCCACATTTACCAT  
GGTCGGAATTTGGATTATCCTTTTGGGAATGTCTTACGCAAGCTGACAGTGGATGTGCAATTCCTAAAGA  
ATGGGCAGATTGCATTCACAGGAACACTTTTATTGGCTATGTAGGATTATGGACTGGCCAGAGCCACACA  
CAAGTTTACAGTTTCTGGTGATGAACGAGATAAAGGCTGGTGGTGGGAGAATGCTATCGTCCCTGTTT  
CGGAGACACATTTCCGTCAGCTGGCTGATCCGCGCTACCTGAGTGAGTCGGAAGTTCGAAGCAGCTG  
TTGGCAAGTTGGCCAAGACTCCCCTTATTGCTGATGTTTATTACATTGTTGGTGGCAGTCCCCCGGGA  
GGGGTGGTCATCAGGAAACAGAGATGGCCAGCAGACATTTGGCCTTAGATCCTTTGAATGGAGCG  
TGGTCCGAGTTGAGACAAATTACGACCACTGGAAGCCAGCACCAAGGAAGATGACCGGAGAACATCTG  
CCATCAAGGCCCTAATGCTACAGGACAAGCAAACCTCAGCCTGGAGGCACCTTTCCAG

**ACGCGT**ACGCGGCCGCTCGAG - GFP Tag - GTTTAA



[View online »](#)

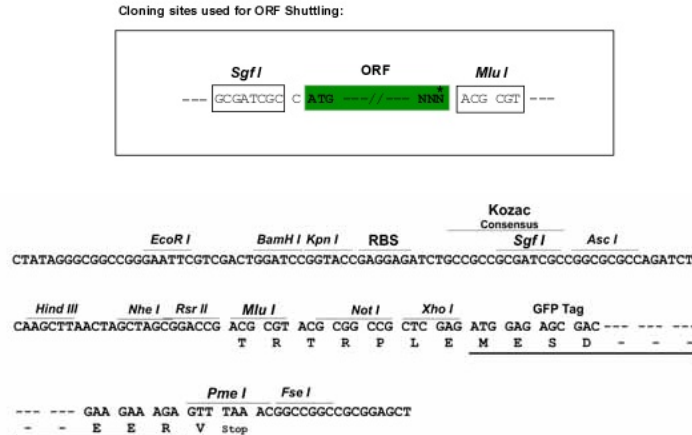
**Protein Sequence:** >RG222974 representing NM\_001042402  
 Red=Cloning site Green=Tags(s)

MRTADREARPLPSLLLLLAGAGLSAASPPAAPRFNVSLDSVPELRWLPVLRHYDLDLVRAAMAQVIGD  
 RVPKVVHVLIGKVVLELERFLPQPFTGEIRGMCDFMNLSLADCLLVNLAYESSVFCTSIVAQDSRGIYH  
 GRNLDYPPFGNVLRLKLTVDVQFLKNGQIAFTGTTFIGYVGLWTGQSPHKFTVSGDERDKGWWENAI AALF  
 RRHIPVSWLIRATLSESENFEEAVGKLAKTPLIADVYIVGGTSPREGVVITRNRDGPADIWPLDPLNGA  
 WFRVETNYDHWKPAKEDDRRTSAIKALNATGQANLSLEALFQ

TRTRPLE - GFP Tag - V

**Restriction Sites:** SgfI-MluI

**Cloning Scheme:**



**ACCN:** NM\_001042402

**ORF Size:** 969 bp

**OTI Disclaimer:** The molecular sequence of this clone aligns with the gene accession number as a point of reference only. However, individual transcript sequences of the same gene can differ through naturally occurring variations (e.g. polymorphisms), each with its own valid existence. This clone is substantially in agreement with the reference, but a complete review of all prevailing variants is recommended prior to use. [More info](#)

**OTI Annotation:** This clone was engineered to express the complete ORF with an expression tag. Expression varies depending on the nature of the gene.

**Components:** The ORF clone is ion-exchange column purified and shipped in a 2D barcoded Matrix tube containing 10ug of transfection-ready, dried plasmid DNA (reconstitute with 100 ul of water).

**Reconstitution Method:**

1. Centrifuge at 5,000xg for 5min.
2. Carefully open the tube and add 100ul of sterile water to dissolve the DNA.
3. Close the tube and incubate for 10 minutes at room temperature.
4. Briefly vortex the tube and then do a quick spin (less than 5000xg) to concentrate the liquid at the bottom.
5. Store the suspended plasmid at -20°C. The DNA is stable for at least one year from date of shipping when stored at -20°C.

**RefSeq:** [NM\\_001042402.2](#)

**RefSeq Size:** 1738 bp

**RefSeq ORF:** 972 bp

**Locus ID:** 27163

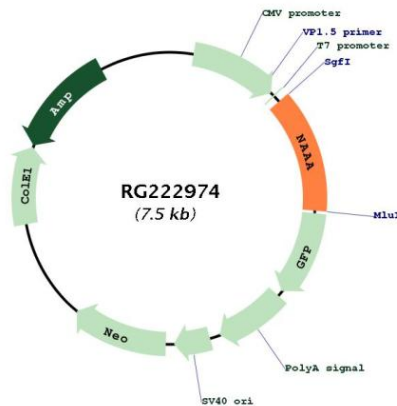
**UniProt ID:** [Q02083](#)

**Cytogenetics:** 4q21.1

**Protein Families:** Transmembrane

**Gene Summary:** This gene encodes an N-acyl ethanolamine-hydrolyzing enzyme which is highly similar to acid ceramidase. Multiple transcript variants encoding different isoforms have been found for this gene. [provided by RefSeq, Jul 2008]

**Product images:**



Circular map for RG222974