

Product datasheet for **RG222947**

SIRPG (NM_080816) Human Tagged ORF Clone

Product data:

Product Type: Expression Plasmids
Product Name: SIRPG (NM_080816) Human Tagged ORF Clone
Tag: TurboGFP
Symbol: SIRPG
Synonyms: bA77C3.1; CD172g; SIRP-B2; SIRPB2; SIRPgamma
Mammalian Cell Selection: Neomycin
Vector: pCMV6-AC-GFP (PS100010)
E. coli Selection: Ampicillin (100 ug/mL)
ORF Nucleotide Sequence: >RG222947 representing NM_080816
 Red=Cloning site Blue=ORF Green=Tags(s)

TTTTGTAATACGACTCACTATAGGGCGGCCGGAATTCGTCGACTGGATCCGGTACCGAGGAGATCTGCC
 GCC**CGATCGCC**

ATGCTGTCCCAGCCTCCTGGCCCCATCCTCCTGGTCCTTCTGCTTCTGACTCTACTGCTGGGACTTA
 CAGAAGTGGCAGGTGAGGAGGAGCTACAGATGATTCAGCCTGAGAAGCTCCTGTTGGTCACAGTTGGAAA
 GACAGCCACTCTGACTGACTGTGACCTCCCTGCTTCCCGTGGGACCCGTCCTGTGGTTCAGAGGAGTT
 GGACCAGCCGGGAATTAATCTACAATCAAAAAGAAGGCCACTTCCCAGGGTAACAACAGTTTCAGACC
 TCACAAAGAGAAACAACATGGACTTTTCCATCCGCATCAGTAGCATCACCCAGCAGATGTCGGCACATA
 CTACTGTGTGAAGTTTCGAAAAGGGAGCCCTGAGAACGTGGAGTTAAGTCTGGACCAGGCACTGAGATG
 GCTTTGGTGGCCCGGCATCATCCCTTACTGCGCTGCTCCTCATAGCTGTCTCTGGGCCCATCTACG
 TCCCCTGGAAGCAGAAGACC

ACGCGTACGCGGCCGCTCGAG - GFP Tag - GTTTAA

Protein Sequence: >RG222947 representing NM_080816
 Red=Cloning site Green=Tags(s)

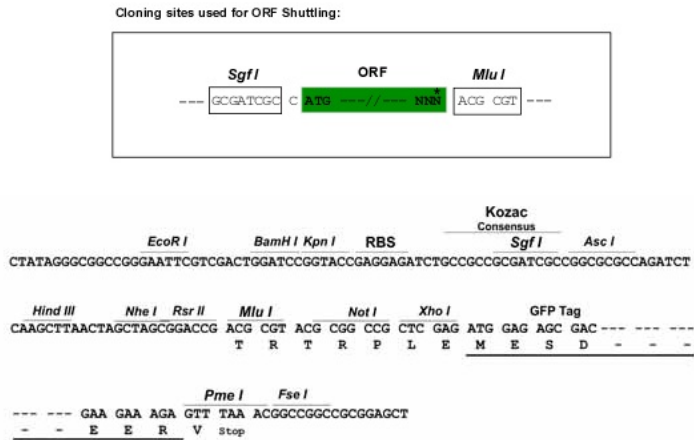
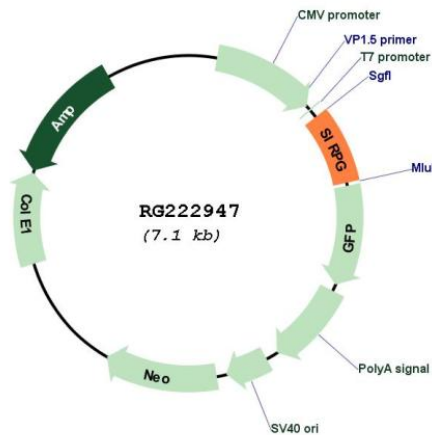
MPVPASWPHPPGFLLLLLLLGLTEVAGEEELQMIQPEKLLLVTVGKTATLHCTVTSLLPVGPVLFWRGV
 GPGRELIYNQKEGHFPRVTTVSDLTKRNNMDFSIRISSITPADVGTYYCVKFRKGSPEVFKSGPGTEM
 ALGGPASSLTALLLIIVLLGPIYVPWKQKT

TRTRPLE - GFP Tag - V

Restriction Sites: Sgfl-MluI



[View online »](#)

Cloning Scheme:

Plasmid Map:


ACCN: NM_080816

ORF Size: 510 bp

OTI Disclaimer: The molecular sequence of this clone aligns with the gene accession number as a point of reference only. However, individual transcript sequences of the same gene can differ through naturally occurring variations (e.g. polymorphisms), each with its own valid existence. This clone is substantially in agreement with the reference, but a complete review of all prevailing variants is recommended prior to use. [More info](#)

OTI Annotation: This clone was engineered to express the complete ORF with an expression tag. Expression varies depending on the nature of the gene.

Components:	The ORF clone is ion-exchange column purified and shipped in a 2D barcoded Matrix tube containing 10ug of transfection-ready, dried plasmid DNA (reconstitute with 100 ul of water).
Reconstitution Method:	<ol style="list-style-type: none">1. Centrifuge at 5,000xg for 5min.2. Carefully open the tube and add 100ul of sterile water to dissolve the DNA.3. Close the tube and incubate for 10 minutes at room temperature.4. Briefly vortex the tube and then do a quick spin (less than 5000xg) to concentrate the liquid at the bottom.5. Store the suspended plasmid at -20°C. The DNA is stable for at least one year from date of shipping when stored at -20°C.
RefSeq:	<u>NM_080816.3</u>
RefSeq Size:	1069 bp
RefSeq ORF:	513 bp
Locus ID:	55423
UniProt ID:	<u>Q9P1W8</u>
Cytogenetics:	20p13
Protein Families:	Druggable Genome, Transmembrane
Gene Summary:	The protein encoded by this gene is a member of the signal-regulatory protein (SIRP) family, and also belongs to the immunoglobulin superfamily. SIRP family members are receptor-type transmembrane glycoproteins known to be involved in the negative regulation of receptor tyrosine kinase-coupled signaling processes. Alternatively spliced transcript variants encoding different isoforms have been described. [provided by RefSeq, Jul 2008]