

Product datasheet for **RG222935**

PTGER3 (NM_198717) Human Tagged ORF Clone

Product data:

Product Type:	Expression Plasmids
Product Name:	PTGER3 (NM_198717) Human Tagged ORF Clone
Tag:	TurboGFP
Symbol:	PTGER3
Synonyms:	EP3; EP3-I; EP3-II; EP3-III; EP3-IV; EP3-VI; EP3e; Inc003875; PGE2-R
Mammalian Cell Selection:	Neomycin
Vector:	pCMV6-AC-GFP (PS100010)
E. coli Selection:	Ampicillin (100 ug/mL)
ORF Nucleotide Sequence:	>RG222935 representing NM_198717 Red=Cloning site Blue=ORF Green=Tags(s)

TTTTGTAATACGACTCACTATAGGGCGGCCGGAATTCGTCGACTGGATCCGGTACCGAGGAGATCTGCC
GCC**CGATCGCC**

ATGAAGGAGACCCGGGGCTACGGAGGGGATGCCCCCTTCTGCACCCGCTCAACCACTCCTACACAGGCA
TGTGGGCGCCGAGCGTTCCGCCGAGGCGGGGCAACCTCACGCGCCCTCCAGGGTCTGGCGAGGATTG
CGGATCGGTGTCCTGGCCTTCCCGATCACCATGCTGCTCACTGGTTTCGTGGGCAACGCACTGGCCATG
CTGCTCGTGTGCGCAGCTACCGGCGCCGGAGAGCAAGCAGAAGTCCTTCTGCTGTGCATCGGCT
GGCTGGCGCTCACCGACCTGGTCGGCAGCTTCTCACCACCCGGTCGTCATCGTCGTGTACCTGTCCAA
GCAGCGTTGGGAGCACATCGACCCGTCGGGGCGGCTCTGCACCTTTTCGGGCTGACCATGACTGTTTTC
GGGCTCTCCTCGTTGTTTCATCGCCAGCGCCATGGCCGTCGAGCGGGCGCTGGCCATCAGGGCGCCGCACT
GGTATGCGAGCCACATGAAGACGCGTGCCACCCGCGTGTGCTGCTCGGCGTGTGGCTGGCCGTCGTCG
CTTCGCCCTGCTGCCGCTGCTGGGCGTGGGCCAGTACACCGTCCAGTGGCCCGGGACGTGGTGTTCATC
AGCACCGGGCGAGGGGCAACGGGACTAGCTCTTCGCATAACTGGGGCAACCTTTTCTTCGCTCTGCT
TTGCCCTTCTGGGGCTCTGGCGCTGACAGTCACTTTTCTGCAACCTGGCCACCATTAAGGCCCTGGT
GTCCCGCTGCCGGGCAAGGCCACGGCATCTCAGTCCAGTGGCCAGTGGGCGCCATCACGACCGAGACG
GCCATTACGCTTATGGGATCATGTGCTGCTGTCGGTCTGCTGGTCTCCGCTCCTGATAATGATGTTGA
AAATGATCTTCAATCAGACATCAGTTGAGCACTGCAAGACACACGGAAGCAGAAAGAATGCAACTT
CTTCTTAATAGCTGTTCCGCTGGCTTCACTGAACCAGATCTTGGATCCTTGGGTTTACCTGCTGTTAAGA
AAGATCCTTCTCGAAAGTTTTGCCAGGAGGAATTTGGGAAAT

AG**CGGACCG**ACGCGTACGCGGCCGCTCGAG - GFP Tag - GTTTAA



[View online »](#)

Protein Sequence: >RG222935 representing NM_198717
Red=Cloning site Green=Tags(s)

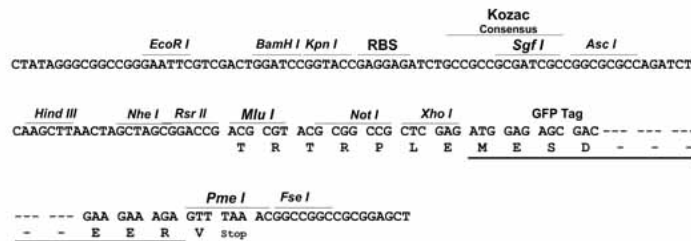
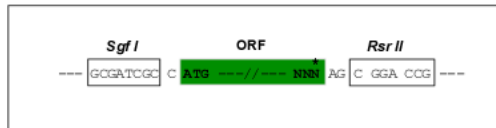
MKETRGYGGDAPFCTRLNHSYTMWAPERSAEARGNLTRPPGSGEDCGSVSVAFPIITMLLTGFVGNALAM
 LLVRSRYRRRESKRKKSFLLCIGWLAL TDLVGQLL TTPVVI VVYL SKQRWEHIDPSGRLCTFFGLTMTVF
 GLSSLFIASAMAVERALAIRAPHWYASHMKTRATRAVLLGVWLAVLAFALLPVLGVGYTVQWPGTWCFI
 STGRGGNGTSSSHNWGNLFFASAF AFLG LLLAL TVTF SCNLATIKALVSRCAKATASQSSAQWGRITTET
 AIQLMGIMCVLSVCWSP LLIMMLKMI FNQTSVEHCKTHTEKQKECNFFLI AVRLASLNQILD PWVYLLLR
 KILLRKFCEEFWGN

SGPTRRRLE - GFP Tag - V

Restriction Sites: SgfI-RsrII

Cloning Scheme:

Cloning sites used for ORF Shuttling:



ACCN: NM_198717

ORF Size: 1095 bp

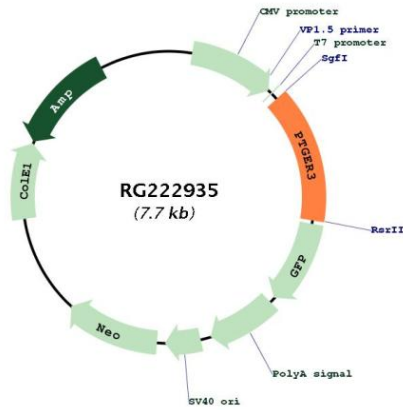
OTI Disclaimer: Due to the inherent nature of this plasmid, standard methods to replicate additional amounts of DNA in E. coli are highly likely to result in mutations and/or rearrangements. Therefore, OriGene does not guarantee the capability to replicate this plasmid DNA. Additional amounts of DNA can be purchased from OriGene with batch-specific, full-sequence verification at a reduced cost. Please contact our customer care team at custsupport@origene.com or by calling 301.340.3188 option 3 for pricing and delivery.

The molecular sequence of this clone aligns with the gene accession number as a point of reference only. However, individual transcript sequences of the same gene can differ through naturally occurring variations (e.g. polymorphisms), each with its own valid existence. This clone is substantially in agreement with the reference, but a complete review of all prevailing variants is recommended prior to use. [More info](#)

OTI Annotation: This clone was engineered to express the complete ORF with an expression tag. Expression varies depending on the nature of the gene.

Components:	The ORF clone is ion-exchange column purified and shipped in a 2D barcoded Matrix tube containing 10ug of transfection-ready, dried plasmid DNA (reconstitute with 100 ul of water).
Reconstitution Method:	<ol style="list-style-type: none">1. Centrifuge at 5,000xg for 5min.2. Carefully open the tube and add 100ul of sterile water to dissolve the DNA.3. Close the tube and incubate for 10 minutes at room temperature.4. Briefly vortex the tube and then do a quick spin (less than 5000xg) to concentrate the liquid at the bottom.5. Store the suspended plasmid at -20°C. The DNA is stable for at least one year from date of shipping when stored at -20°C.
RefSeq:	NM_198717.2
RefSeq Size:	1817 bp
RefSeq ORF:	1098 bp
Locus ID:	5733
UniProt ID:	P43115
Cytogenetics:	1p31.1
Protein Families:	Druggable Genome, GPCR, Transcription Factors, Transmembrane
Protein Pathways:	Calcium signaling pathway, Neuroactive ligand-receptor interaction
Gene Summary:	The protein encoded by this gene is a member of the G-protein coupled receptor family. This protein is one of four receptors identified for prostaglandin E2 (PGE2). This receptor may have many biological functions, which involve digestion, nervous system, kidney reabsorption, and uterine contraction activities. Studies of the mouse counterpart suggest that this receptor may also mediate adrenocorticotrophic hormone response as well as fever generation in response to exogenous and endogenous stimuli. Multiple transcript variants encoding different isoforms have been found for this gene. [provided by RefSeq, Aug 2009]

Product images:



Circular map for RG222935