

Product datasheet for **RG222932**

Neuroigin 4 (NLGN4X) (NM_020742) Human Tagged ORF Clone

Product data:

Product Type:	Expression Plasmids
Product Name:	Neuroigin 4 (NLGN4X) (NM_020742) Human Tagged ORF Clone
Tag:	TurboGFP
Symbol:	Neuroigin 4
Synonyms:	ASPGX2; AUTSX2; HLNX; HNL4X; NLGN4
Mammalian Cell Selection:	Neomycin
Vector:	pCMV6-AC-GFP (PS100010)
E. coli Selection:	Ampicillin (100 ug/mL)



[View online »](#)

ORF Nucleotide Sequence:

>RG222932 representing NM_020742
 Red=Cloning site Blue=ORF Green=Tags(s)

TTTTGTAATACGACTCACTATAGGGCGGCCGGGAATTCGTCGACTGGATCCGGTACCGAGGAGATCTGCC
 GCC**CGGATCGCC**

ATGTCACGGCCCCAGGGACTGCTATGGCTTCCTTTGTTGTTACCCCGGTCTGCGTCATGTTAAACTCCA
 ATGTCCTCCTGTGGTTAACTGCTTTGCCATCAAGTTCACCCCTATTGACAGCCAAGCACAGTATCCAGT
 TGCAACACAAATTATGGCAAAATCCGGGGCCTAAGAACACCGTTACCCAATGAGATCTTGGGTCCAGTG
 GAGCAGTACTTAGGGGTCCCCTATGCCTCACCCCCACTGGAGAGAGCGGTTTCAGCCCCAGAACCCC
 CGTCTCCTGGACTGGCATCCGAAATACTACTCAGTTTGTGCTGTGCCCCCAGCACCTGGATGAGAG
 ATCCTTACTGCATGACATGCTGCCCATCTGGTTTACCGCAATTTGGATACTTTGATGACCTATGTTCAA
 GATCAAAATGAAGACTGCCTTTACTTAAACATCTACGTGCCACGGAAGATGATATTCATGATCAGAACA
 GTAAGAAGCCCGTCATGGTCTATATCCATGGGGGATCTTACATGGAGGGCACCGGCAACATGATTGACGG
 CAGCATTTTGGCAAGCTACGGAACGTCATCGTGATCACCATTAACCTACCGTCTGGGAATACTAGGGTTT
 TTAAGTACCGGTGACCAGGCAGCAAAAGGCAACTATGGGCTCCTGGATCAGATTCAGCACTGCGGTGGA
 TTGAGGAGAATGTGGGAGCCTTTGGCGGGACCCCAAGAGAGTGACCATCTTTGGCTCGGGGGCTGGGGC
 CTCCTGTGTGACGCTGTTGACCTGTCCCCTACTCAGAAGGTCTCTTCCAGAAGGCCATCATTAGAGC
 GGCACCGCCCTGTCCAGCTGGGACGTAAGTACCAGCCGCAAGTACACTCGGATATTGGCAGACAAGG
 TCGGCTGCAACATGCTGGACACCACGGACATGGTAGAATGCCTGCGGAACAAGAATAACAAGGAGTCTAT
 CCAGCAGACCATCACCCCGCCACTACCATAGCCTTCGGGCCGGTATCGACGGCGAGTCTATCCCA
 GACGACCCCGAGTCTGATGGAGCAAGCGAGTTCCTCAACTACGACATCATGCTGGGCGTCAACCAAG
 GGAAGGCTGAAGTTCGTGGACGGCATCGTGGATAACGAGGACGGTGTGACGCCCAACACTTTGACTT
 CTCGCTGCCAATTCGTGGACAACCTTTACGGCTACCCTGAAGGAAAGACACTTTGCGGGAGACTATC
 AAGTTCATGTACACAGACTGGGCGGATAAGGAAAACCCGAGACGCGGGGAAAACCTGGTGGCTCTCT
 TTAAGTACAGTGGGTGGCCCCGCGTGGCCACCGCCGACCTGCACGCGCAGTACGGCTCCCCAC
 CTACTTCTATGCCTTCTATCATCACTGCCAAAGCGAAATGAAGCCAGCTGGGCAGATTCGGCCATGGT
 GATGAGGTCCCCTATGTCTTCGGCATCCCATGATCGGTCCCACCGAGCTCTTCAAGTGTAACTTTTCCA
 AGAACGACGTGCTCAGCGCCGTGGTACATGACCTACTGGACGAACTTCGCCAAAACCTGGTATCCAAA
 TCAACCAGTTCCTCAGGATACCAAGTTCATTACACAAAACCCAAACCGCTTTGAAGAAGTGGCCTGGTCC
 AAGTATAATCCCAAAGACAGCTCTATCTGCATATTGGCTTGAAACCCAGAGTGAGAGATCACTACCGGG
 CAACGAAAGTGGCTTTCTGGTTGAACTCGTTCCTCATTGACACAACCTGAACGAGATATCCAGTATGT
 TTCAACAACCAAAAGGTTCTCCACCAGACATGACATCATTTCCCTATGGCACCCCGCGATCTCCCGCC
 AAGATATGGCAAACCAACCAACGCCCAGCAATCACTCCTGCCAACAATCCCAAACACTCTAAGGACCCCTC
 ACAAAACAGGGCCTGAGGACACAACCTGTCTCATTGAAACCAACGAGATTATCCACCGAATTAAGTGT
 CACCATTCGCGTCGGGGCGTCTCTCTTCTCAACATCTTAGCTTTTGGCGGCTGTACTACAAAAAG
 GACAAGAGGCGCCATGAGACTCACAGGCGCCCCAGTCCCAGAGAAACACCACAAATGATATCGCTCACA
 TCCAGAACGAAGAGATCATGTCTCTGCAGATGAAGCAGCTGGAACACGATCACGAGTGTGAGTCTGCA
 GGCACACGACACTGAGGCTCACCTGCCCGCCAGACTACACCTCACGCTGCGCCGGTCCGACAGATGAC
 ATCCCCTTATGACGCCAAACACCATCACCATGATTTCAAACACACTGACGGGGATGCAGCTTTGCACA
 CTTTTAACACCTTCAGTGGAGGACAAAACAGTACAAATTTACCCACGGACATTCACCACTAGAGTA

ACGCGTACGCGGCCGCTCGAG – GFP Tag – GTTTAA

Protein Sequence: >RG222932 representing NM_020742
 Red=Cloning site Green=Tags(s)

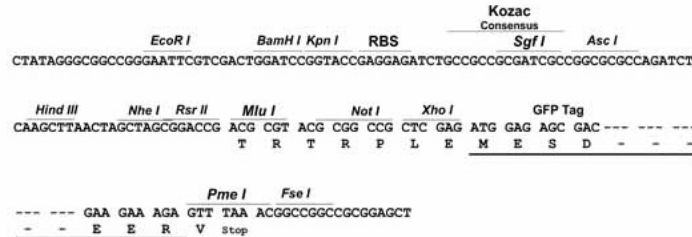
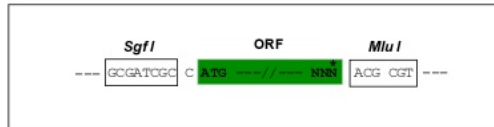
```
MSRPQGLLWPLLFTPVCVMLNSNVLLWLTALAIKFTLIDSQAQYPVVNTNYGKIRGLRTPLPNEILGPV
EQYLGVPYASPTGERRFPPEPPSSWTGIRNTTQFAAVCPQHLDERSLLHDMLPIWFTANLDTLMTYVQ
DQNEDECLYLNIIYVPTEDDIHDQNSKKPVMVYIHGGSYMEGTGNMIDGSILASYGNVIVITINYRLGILGF
LSTGDQAAKGNYGLLDQIQALRWIEENVGAFGGDPKRVTFGSGAGASCVSLTLTSHYSEGLFQKAIQS
GTALSSWAVNYQPAKYTRILADKVGCMMLDTTDMVECLRNKNYKELIQQTITPATYHIAFGPVIDGDVIP
DDPQILMEQGEFLNYDIMLGVNQGEGLKFVDGIVDNEGDVTPNDFDFSVSNFVDNLYGYPEGKDTLRETI
KFMYTDWADKENPERRKTLVALFTDHQWVAPAVATADLHAQYGSPTYFYAFYHHCQSEMKPSWADSAHG
DEVYVYVFGIPMIGPTELFSCNFSKNDVMLSAVVMTYWTNFAKTGDPNQVPVQDTKFIHTKPNRFEEVAWS
KYNPKDQLYLHIGLKPRVRDHYRATKVAFWLELVPHLHNLNEIFQYVSTTTKVPPDMTSFPYGTRRSPA
KIWPTTKRPAITPANNPKHSDPHKTGPEDTTVL IETKRDYSTE SVTIAVGASLLFLNILAFAALYYKK
DKRRHETHRRPSPQRNTTNDIAHIQNEEIMSLQMKQLEHDHECESLQAHTLRLTCPDPYTLTLRRSPDD
IPLMTPNTITMIPNTLTGMQPLHTFNTFSGGQNSTNLPHGHSTTRV
```

TRTRPLE - GFP Tag - V

Restriction Sites: SgfI-MluI

Cloning Scheme:

Cloning sites used for ORF Shutting:



- ACCN:** NM_020742
- ORF Size:** 2448 bp
- OTI Disclaimer:** The molecular sequence of this clone aligns with the gene accession number as a point of reference only. However, individual transcript sequences of the same gene can differ through naturally occurring variations (e.g. polymorphisms), each with its own valid existence. This clone is substantially in agreement with the reference, but a complete review of all prevailing variants is recommended prior to use. [More info](#)
- OTI Annotation:** This clone was engineered to express the complete ORF with an expression tag. Expression varies depending on the nature of the gene.
- Components:** The ORF clone is ion-exchange column purified and shipped in a 2D barcoded Matrix tube containing 10ug of transfection-ready, dried plasmid DNA (reconstitute with 100 ul of water).

Reconstitution Method:

1. Centrifuge at 5,000xg for 5min.
2. Carefully open the tube and add 100ul of sterile water to dissolve the DNA.
3. Close the tube and incubate for 10 minutes at room temperature.
4. Briefly vortex the tube and then do a quick spin (less than 5000xg) to concentrate the liquid at the bottom.
5. Store the suspended plasmid at -20°C. The DNA is stable for at least one year from date of shipping when stored at -20°C.

RefSeq: [NM_020742.3](#)

RefSeq Size: 5706 bp

RefSeq ORF: 2451 bp

Locus ID: 57502

UniProt ID: [Q8N0W4](#)

Cytogenetics: Xp22.32-p22.31

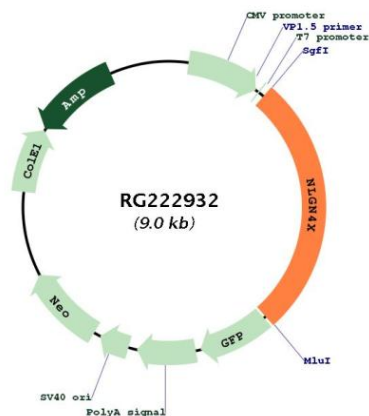
Domains: COesterase

Protein Families: Druggable Genome, Transmembrane

Protein Pathways: Cell adhesion molecules (CAMs)

Gene Summary: This gene encodes a member of the type-B carboxylesterase/lipase protein family. The encoded protein belongs to a family of neuronal cell surface proteins. Members of this family may act as splice site-specific ligands for beta-neurexins and may be involved in the formation and remodeling of central nervous system synapses. The encoded protein interacts with discs large homolog 4 (DLG4). Mutations in this gene have been associated with autism and Asperger syndrome. Alternative splicing results in multiple transcript variants. [provided by RefSeq, Aug 2013]

Product images:



Circular map for RG222932