

Product datasheet for **RG222923**

CTNND1 (NM_001085461) Human Tagged ORF Clone

Product data:

Product Type:	Expression Plasmids
Product Name:	CTNND1 (NM_001085461) Human Tagged ORF Clone
Tag:	TurboGFP
Symbol:	CTNND1
Synonyms:	BCDS2; CAS; CTNND; p120; p120(CAS); p120(CTN); P120CAS; P120CTN
Mammalian Cell Selection:	Neomycin
Vector:	pCMV6-AC-GFP (PS100010)
E. coli Selection:	Ampicillin (100 ug/mL)



[View online »](#)

ORF Nucleotide Sequence:

>RG222923 representing NM_001085461
 Red=Cloning site Blue=ORF Green=Tags(s)

TTTTGTAATACGACTCACTATAGGGCGGCCGGGAATTCGTCGACTGGATCCGGTACCGAGGAGATCTGCC
 GCC**CGGATCGCC**

ATGGACGACTCAGAGGTGGAGTCGACCGCCAGCATCTTGGCCTCTGTGAAGGAACAAGAGGCCAGTTTG
 AGAAGCTGACCCGGGCGCTGGAGGAGGAACGGCGCCACGCTCTCGGCGCAGCTGGAACGCGTCCGGGTCTC
 ACCACAAGATGCCAACCCACTCATGGCCAACGGCACACTACCCGCCGGCATCAGAACGGCCGGTTTGTG
 GGCGATGCTGACCTTGAAGACAGAAAATTTTCAGATTTGAAACTCAACGGACCCAGGATCACAGTCACC
 TTCTATATAGCACCATCCCAGGATGCAGGAGCCGGGCGAGATTGTGGAGACCTACACGGAGGAGGATCC
 TGAGGGAGCCATGTCTGTAGTCTCTGTGGAGACCTCAGATGATGGGACCACTCGGCGCACAGAGACCACG
 GTCAAGAAAGTAGTGAAGACTGTGACAACCGGACAGTACAGCCAGTCGATATGGGACCAGACGGGTTGC
 CTGTGGATGCTTCATCAGTTTCTAACAATAATCCAGACTTTGGGTCGTGATTTCCGCAAGAATGGCAA
 TGGGGGACCTGGTCCCTATGTGGGGCAAGCTGGCACTGCTACCCTTCTAGGAACCTCCACTACCCTCCT
 GATGGTTATAGTCGCCACTATGAAGATGGTTATCCAGGTGGCAGTGATAACTATGGCAGTCTGTCCCGGG
 TGACCCGCATTGAGGAGCGGTATAGGCCAGCATGGAAGGCTACCGGGCACCTAGTAGACAGGATGTGTA
 TGGGCCCCAACCCAGGTTCCGGTAGGTGGGAGCAGCGTGGATCTGCATCGCTTTCATCCAGAGCCTTAT
 GGGCTAGAGGATGACCAGCGTAGTATGGGCTATGATGACCTGGATTATGGTATGATGTCTGATTATGGCA
 CTGCCCGTCGGACTGGGACACCCCTGACCCTCGTCGGCGCCTCAGGAGCTATGAAGACATGATTGGTGA
 GGAGGTGCCATCGGATCAATACTACTGGGCTCCTTTGGCCAGCATGAGCGAGGAAGTTTAGCAAGCTTG
 GATAGCTGCGCAAAGGAGGGCCTCCACCTCCTAATTGGAGACAGCCAGAGCTGCCAGAGGTGATCGCCA
 TGCTTGGATTCCGCTTGGGTGCTGTCAAGTCCAATGCAGCTGCATACCTGCAACACTTATGCTACCGCAA
 TGACAAGGTGAAGACTGACGTGCGGAAGCTCAAGGGCATCCAGTACTGGTGGGATTGTTAGACCATCCC
 AAAAAGGAAGTGACCTTGGAGCCTGTGGAGCTCTCAAGAATATCTCTTTTGGACGTGACCAGGATAACA
 AGATTGCCATAAAAACTGTGATGGTGTGCTGCCCTTGTGCGATTGCTTCGAAAGGCTCGTGATATGGA
 CCTTACTGAAGTTATTACCGGAACCCTGTGGAATCTTTCATCCCATGACTCAATCAAAATGGAGATTGTG
 GACCATGCACTGCATGCCTTGACAGATGAAGTGATCATTCTCATTCTGGTTGGGAGCGGGAACCTAATG
 AAGACTGTAAGCCACGCCATATTGAGTGGGAATCGGTGCTACCAACACAGCTGGCTGCCTTAGGAATGT
 AAGCTCAGAGAGGAGTGAAGCTCGCCGGAACCTCGGGAATGTGATGGTTTAGTTGATGCCCTCATTTTC
 ATTTGTTAGGCTGAGATTGGGCAGAAGGATTAGACAGCAAGCTTGTAGAGAAGTGTGTTTGCCTTCTTC
 GGAACCTATCATATCAAGTTACCGGGAGATCCCACAGGCAGAGCGTTACCAAGAGGCAGCTCCCAATGT
 TGCCAACAATACTGGGCCACATGCTGCCAGTTGCTTTGGGGCCAAGAAGGGCAAAGGGAAAAACCTATA
 GAGGATCCAGCAAACGATACAGTGGATTTCCCTAAAAGAACGAGTCCAGCTCGAGGCTATGAGCTTAT
 TTCAGCCAGAGGTGGTTCGGATATACATCTCACTTCTTAAGGAGAGCAAGACTCCTGCCATCCTAGAAGC
 CTCAGCTGGAGCTATCCAGAACTGTGTGCTGGGCGCTGGACGTATGGTCGATACATCCGCTCTGCTCTG
 CGTCAAGAGAAGGCTCTTTTCCCATAGCTGACCTCCTGACTAATGAACATGAACGGGTGGTGAAGCTG
 CATCTGGAGCACTGAGAAAACCTGGCTGTGGATGCTCGCAACAAAGAATTAATTGGTAAACATGCTATTCC
 TAACCTGGTAAAGAATCTGCCAGGAGGACAGCAGAACTCCTCTTGGAAATTTCTCTGAGGACACTGTCATC
 TCTATTTTGAACACTATCAACGAGGTTATCGCTGAGAAGTTGGAGGCTGCCAAAAAGCTTCGAGAGACAC
 AGGGTATTGAGAAGCTGGTGTGATCAACAATCAGGGAACCGCTCAGAAAAAGAAGTTCGAGCAGCAGC
 ACTTGTATTACAGACAATCTGGGATATAAGGAACTGCGGAAGCCACTGGAAAAAGAAGGATGGAAGAAA
 TCAGACTTTCAGGTGAATCTAAACAATGCTTCCCAGGAGCCAGAGCAGTATTTCATATGATGATAGTACTC
 TCCCTCTCATTGACCGGAACCAAAAATCAGATAAGAACTGATCGGGAAGAAATTCAGATGAGCAATAT
 GGGATCAAACACAAAATCACTAGATAACAATAATCCACACCAATGAGAGAGGAGACCACAATAGAACA
 CTGGATCGATCGGGGATCTAGGCGACATGGAGCCATTGAAGGGAACAACACCCTTGATGCAGAAGATTA
 GCGGTCCG

AG**CGGACCG**ACGCGTACGCGGCCGCTCGAG - GFP Tag - GTTTAA

Protein Sequence: >RG222923 representing NM_001085461
Red=Cloning site Green=Tags(s)

```
MDDSEVESTASILASVKEQEAQFEKLTRALEEERRHVSAQLERVRVSPQDANPLMANGTLTRRHQNGRFV
GDADLERQKFSDLKLNQPQDHSLLYSTIPRMQEPGQIVETYTEDPEGAMSVSVSVETSDDGTTTRRTETT
VKKVVKTVTTRTVQPVAMGPDGLPVDASSVSNNYIQTLGRDFRKNNGGPGPYVQGAGTATLPRNFHYPP
DGYSRHYEDGYPGGSDNYGSLSRVTRIEERYRPSMEGYRAPSQRQDVYGPQPQVVRVGGSSVDLHRFHPEPY
GLEDDQRSMGYDDL DYGMSDYGTARRTGTPSDPRRRLRSYEDMIGEEVPSDQYYWAPLAQHERGSLASL
DSL RKG GPPPNWRQPELPEVIAMLGFR LGAVKSNAAA YLQHL CYRNDKVKT D VRKLKGI PVLVGLLDHP
KKEVHLGACGALKNISFGRDQDNKIAIKNCDGVPALVRLLRKARDMDL TEVITGTLWNLSSHDSIKMEIV
DHALHAL TDEVIIPHSGWEREPNEDCKPRHIEWESVL TNTAGCLRNVSSERSEARRKLRCDGLVDALIF
IVQAEIGQKSDSKL VENCVCLLRNL SYQVHREIPQAERYQEAAPNVANNTGPHAASCFGAKKGGKGGKPI
EDPANDTVDFPKRTSPARGYELLFQPEVVRIYISLLKESKTPAILEASAGAIQNL CAGRWTYGRYIRSAL
RQEKALSAIADLLTNEHERVVKAASGALRNLAVDARNKELIGKHAIPNLVKNLPGGQQNSSWNFSEDTVI
SILNTINEVIAENLEAAKKLRETQGIEKLV L INKSGNRSEKEVRAAALVLQTIWGYKELRKPLEKEGWKK
SDFQVNLNNASRSQSSHSYDDSTLPLIDRNQKSDKKPDREEIQMSNMGSNTKSLDNNYSTPNERGDHNR
LDRSGDLGDMEPLKGTTPLMQKISGP
```

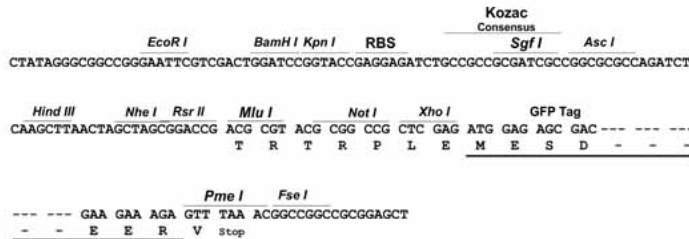
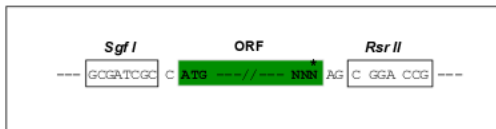
SGPTRRRLE - GFP Tag - V

Chromatograms: https://cdn.origene.com/chromatograms/ja1842_e07.zip

Restriction Sites: SgfI-RsrII

Cloning Scheme:

Cloning sites used for ORF Shuttling:

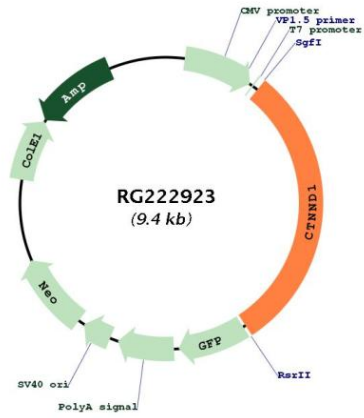


ACCN: NM_001085461

ORF Size: 2808 bp

OTI Disclaimer:	<p>Due to the inherent nature of this plasmid, standard methods to replicate additional amounts of DNA in E. coli are highly likely to result in mutations and/or rearrangements. Therefore, OriGene does not guarantee the capability to replicate this plasmid DNA. Additional amounts of DNA can be purchased from OriGene with batch-specific, full-sequence verification at a reduced cost. Please contact our customer care team at custsupport@origene.com or by calling 301.340.3188 option 3 for pricing and delivery.</p> <p>The molecular sequence of this clone aligns with the gene accession number as a point of reference only. However, individual transcript sequences of the same gene can differ through naturally occurring variations (e.g. polymorphisms), each with its own valid existence. This clone is substantially in agreement with the reference, but a complete review of all prevailing variants is recommended prior to use. More info</p>
OTI Annotation:	This clone was engineered to express the complete ORF with an expression tag. Expression varies depending on the nature of the gene.
Components:	The ORF clone is ion-exchange column purified and shipped in a 2D barcoded Matrix tube containing 10ug of transfection-ready, dried plasmid DNA (reconstitute with 100 ul of water).
Reconstitution Method:	<ol style="list-style-type: none"> 1. Centrifuge at 5,000xg for 5min. 2. Carefully open the tube and add 100ul of sterile water to dissolve the DNA. 3. Close the tube and incubate for 10 minutes at room temperature. 4. Briefly vortex the tube and then do a quick spin (less than 5000xg) to concentrate the liquid at the bottom. 5. Store the suspended plasmid at -20°C. The DNA is stable for at least one year from date of shipping when stored at -20°C.
RefSeq:	NM_001085461.1 , NP_001078930.1
RefSeq Size:	6258 bp
RefSeq ORF:	2802 bp
Locus ID:	1500
UniProt ID:	O60716
Cytogenetics:	11q12.1
Protein Families:	Druggable Genome
Protein Pathways:	Adherens junction, Leukocyte transendothelial migration
Gene Summary:	This gene encodes a member of the Armadillo protein family, which function in adhesion between cells and signal transduction. Multiple translation initiation codons and alternative splicing result in many different isoforms being translated. Not all of the full-length natures of the described transcript variants have been determined. Read-through transcription also exists between this gene and the neighboring upstream thioredoxin-related transmembrane protein 2 (TMX2) gene. [provided by RefSeq, Dec 2010]

Product images:



Circular map for RG222923