

Product datasheet for **RG222902**

SMURF1 (NM_020429) Human Tagged ORF Clone

Product data:

Product Type:	Expression Plasmids
Product Name:	SMURF1 (NM_020429) Human Tagged ORF Clone
Tag:	TurboGFP
Symbol:	SMURF1
Mammalian Cell Selection:	Neomycin
Vector:	pCMV6-AC-GFP (PS100010)
E. coli Selection:	Ampicillin (100 ug/mL)



[View online »](#)

ORF Nucleotide Sequence:

>RG222902 representing NM_020429
 Red=Cloning site Blue=ORF Green=Tags(s)

TTTTGTAATACGACTCACTATAGGGCGGCCGGGAATTCGTCGACTGGATCCGGTACCGAGGAGATCTGCC
 GCC**CGGATCGCC**

ATGTCGAACCCCGGGACACGCAGGAACGGCTCCAGCATCAAGATCCGTCTGACAGTGTTATGTGCCAAGA
 ACCTTGCAAAGAAAGACTTCTTCAGGCTCCCTGACCCCTTTTGCAAAGATTGTCGTGGATGGGTCTGGGCA
 GTGCCACTCAACCGACTGTGAAAAACACATTGGACCCAAAGTGAACCCAGCACTATGATCTATATGTT
 GGGAAAACGGATTTCGATAACCATTAGCGTGTGGAACCATAAAGAAAATTCACAAGAAAACAGGGAGCTGGCT
 TCCTGGGCTGTGTGCGGCTGCTCTCCAATGCCATCAGCAGATTAAGAGATACCGGATACCGAGCTTTGGA
 TCTATGCAAACCTAAACCCCTCAGATACTGATGCAGTTCGTGGCCAGATAGTGGTCAGTTTACAGACACGA
 GACAGAATAGGAACCGCGGCTCGGTGGTGGACTGCAGAGGACTGTTAGAAAATGAAGGAACGGTGTATG
 AAGACTCGGGCCTGGGAGGCCGCTCAGCTGCTTCATGGAGGAACCGCCCTTACACAGATAGCACCGG
 TGCTGCTGCTGGAGGAGGAATTGCAGGTTTCGTGGAGTCCCAAGTCAAGATCAAAGACTTCAGGCACAG
 CGGCTTCGAAACCTGATGTGCGAGTTCACTACAGACGCCCCAGAACCGACCACACGGCCACCAGTCCC
 CGGAACCTGCCGAAGGCTACGAACAAAGAACACAGTCCAGGGCCAAGTTTACTTTTTGCATACACAGAC
 TGGAGTTAGCACGTGGCAGACCCAGGATACCAAGTCCCTCGGGGACCATTCCTGGGGGAGATGCAGCT
 TTTCTATACGAATTCCTTCTACAAGGCCATACATCTGAGCCCAGAGACCTAACAGTGTGAACCTGTGATG
 AACTTGGACCACTGCCCGCAGGCTGGGAAGTCAGAAGTACAGTTTCTGGGAGGATATATTTTGTAGATCA
 TAATAACCGAACAAACCCAGTTTACAGACCAAGGTTACACCACATCATGAATCACCAGTGCCAACTCAAG
 GAGCCCAGCCAGCCGCTGCCACTGCCAGTGAAGGCTCTCTGGAGGACGAGGAGCTTCTGCCAGAGAT
 ACGAAAAGAGATCTAGTCCAGAAGCTGAAAGTCCCTCAGACACGAACTGTCGCTTCAGCAGCCCCAAGCTGG
 TCATTGCCGCATCGAAGTGTCCAGAGAAGAAATCTTTGAGGAGTCTTACCGCCAGATAATGAAGATGCGA
 CCGAAAAGACTTGAAAAACCGGCTGATGGTGAATTCCTGGGGAAGAAAGTTTGGATTACGGTGGTGTGG
 CCAGGGAGTGGCTTTACTTGCTGTGCCATGAAATGCTGAATCCTTATTACGGGCTCTCCAGTATTCTAC
 GGACAATATTTACATGTTGCAAATAAATCCGGATTCTTCAATCAACCCCGACCACTTGTCTTATTTCCAC
 TTTGTGGGGCGGATCATGGGCTGGCTGTGTTCCATGGACACTACATCAACGGGGCTTCACAGTGCCT
 TCTACAAGCAGCTGCTGGGAAGCCATCCAGCTCTCAGATCTGGAATCTGTGGACCCAGAGCTGCATAA
 GAGCTTGGTGTGGATCCTAGAGAACGACATCACGCTGTACTGGACCACACCTTCTGCGTGAACACAAC
 GCCTTCGGGCGGATCCTGCAGCATGAACTGAAACCCAATGGCAGAAATGTGCCAGTACAGAGGAGAATA
 AGAAAGAATACGTCGGTGTATGTAAACTGGAGGTTTATGAGAGGAATCGAAGCCAGTCTTAGCTCT
 GCAGAAGGGTTCAATGAGCTCATCCCTCAACATCTGCTGAAGCCTTTTGACCAGAAGGAACTGGAGCTG
 ATCATAGGCGGCCTGGATAAAATAGACTTGAACGACTGGAAGTGAACACGCGGCTGAAGCACTGTGTGG
 CCGACAGCAACATCGTCCGGTGGTTCTGGCAAGCGGTGGAGACGTTTCGATGAAGAAAGGAGGGCCAGGCT
 CCTGCAGTTTGTGACTGGGTCCACGCGAGTCCCCTCAAGGCTTCAAGGCTTTGCAAGTTTCTACAGGC
 GCGGCAGGGCCCCGGCTGTTACCATCCACCTGATAGACGCGAACACAGACAACCTTCCGAAGGCCATA
 CCTGCTTAACCGGATCGACATTCCACCATATGAGTCTATGAGAAGCTCTACGAGAAGCTGCTGACAGC
 CGTGGAGGAGACTGCGGTTTGTGTGGAG

ACGCGTACGCGGCCGCTCGAG – GFP Tag – GTTTAA

Protein Sequence: >RG222902 representing NM_020429
Red=Cloning site Green=Tags(s)

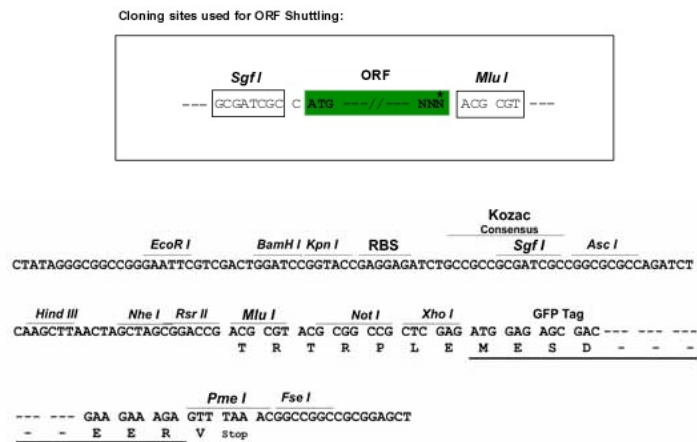
```

MSNPGTRRNGSSIKIRLTVLCAKNLAKKDFRLLPDPFAKIVVDGSGQCHSTDTVKNLDPKWNQHYDLYV
GKTDSITISVWNHKKIHKKQAGFLGCVRLLSNAISRLLKDTGYQRLDLCKLNPSDTDAVRGQIVVSLQTR
DRIGTGGSVVDCRGLLENEGTVYEDSGPGRPLSCFMEEPAPYTDSTGAAAGGGNCRFVESPQDQRLQAQ
RLRNPDVVRGSLQTPQNRPHGHQSPPELPEGYEQRTTVQGQVYFLHTQTGVSTWHDPRIPSPSGTIPGGDAA
FLYEFLLQGHTSEPRDLNSVNCDELGPLPPGWEVRSTVSGRIYFVDHNNRRTTQFTDPRLLHHIMNHQCQLK
EPSQPLPLPSEGSLEDEELPAQRYERDLVQKLKVLRHELSQLQPQAGHCRIEVSREEIFEESYRQIMKMR
PKDLKKRLMVKFRGEEGLDYGAVAREWL YLLCHEMLNPPYYGLFQYSTDNIYMLQINPDSSINPDHLSYFH
FVGRIMGLAVFHGHYINGGFTVPFYKQLLQKPIQLSDLESVDPELHKSLVWILENDITPVL DHTFCVEHN
AFGRILQHELKPNRNPVTEENKKEYVRL YVNWRFMRGIEAQFLALQKGFNELIPQHLLKPFQKELEL
IIGGLDKIDLNDWKSNTRLKHCVADSNIVRWFQAVETFEERRARLLQFVTGSTRVPLQGFKALQGSTG
AAGPRLFTIHLIDANTDNLPAHTCFNRIDIPPYESYEKLYEKLLTAVEETCGFAVE
  
```

TRTRPLE - GFP Tag - V

Restriction Sites: SgfI-MluI

Cloning Scheme:



ACCN: NM_020429

ORF Size: 2271 bp

OTI Disclaimer: The molecular sequence of this clone aligns with the gene accession number as a point of reference only. However, individual transcript sequences of the same gene can differ through naturally occurring variations (e.g. polymorphisms), each with its own valid existence. This clone is substantially in agreement with the reference, but a complete review of all prevailing variants is recommended prior to use. [More info](#)

OTI Annotation: This clone was engineered to express the complete ORF with an expression tag. Expression varies depending on the nature of the gene.

Components: The ORF clone is ion-exchange column purified and shipped in a 2D barcoded Matrix tube containing 10ug of transfection-ready, dried plasmid DNA (reconstitute with 100 ul of water).

Reconstitution Method:

1. Centrifuge at 5,000xg for 5min.
2. Carefully open the tube and add 100ul of sterile water to dissolve the DNA.
3. Close the tube and incubate for 10 minutes at room temperature.
4. Briefly vortex the tube and then do a quick spin (less than 5000xg) to concentrate the liquid at the bottom.
5. Store the suspended plasmid at -20°C. The DNA is stable for at least one year from date of shipping when stored at -20°C.

RefSeq: [NM_020429.1](#), [NP_065162.1](#)

RefSeq Size: 5737 bp

RefSeq ORF: 2274 bp

Locus ID: 57154

UniProt ID: [Q9HCE7](#)

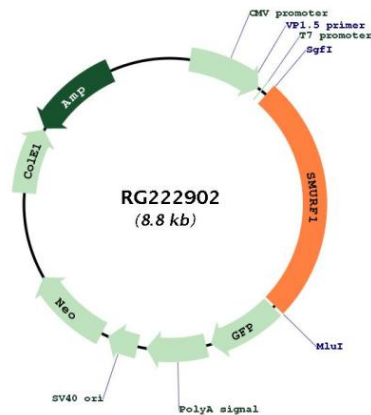
Cytogenetics: 7q22.1

Protein Families: Druggable Genome

Protein Pathways: Endocytosis, TGF-beta signaling pathway, Ubiquitin mediated proteolysis

Gene Summary: This gene encodes a ubiquitin ligase that is specific for receptor-regulated SMAD proteins in the bone morphogenetic protein (BMP) pathway. This protein plays a key roll in the regulation of cell motility, cell signalling, and cell polarity. Alternative splicing results in multiple transcript variants encoding different isoforms.[provided by RefSeq, Dec 2010]

Product images:



Circular map for RG222902