

Product datasheet for **RG222871**

PTPRU (NM_133178) Human Tagged ORF Clone

Product data:

Product Type:	Expression Plasmids
Product Name:	PTPRU (NM_133178) Human Tagged ORF Clone
Tag:	TurboGFP
Symbol:	PTPRU
Synonyms:	FMI; hPTP-J; PCP-2; PTP; PTP-J; PTP-PI; PTP-RO; PTPPSI; PTPRO; PTPU2; R-PTP-PSI; R-PTP-U
Mammalian Cell Selection:	Neomycin
Vector:	pCMV6-AC-GFP (PS100010)
E. coli Selection:	Ampicillin (100 ug/mL)
ORF Nucleotide Sequence:	>RG222871 representing NM_133178 Red=Cloning site Blue=ORF Green=Tags(s)

TTTTGTAATACGACTCACTATAGGGCGGCCGGAATTCGTCGACTGGATCCGGTACCGAGGAGATCTGCC
GCC**CGATCGCC**

ATGGCCCGTGCCAGGCGCTCGTGCTGGCACTCACCTTCCAGCTCTGCGCGCCGGAGACCGAGACTCCGG
CAGCTGGCTGCACCTTCGAGGAGGCAAGTGACCCAGCAGTGCCCTGCGAGTACAGCCAGGCCAGTACGA
TGACTTCCAGTGGGAGCAAGTGCGAATCCACCCTGGCACCCGGGACCTGCGGACCTGCCCCACGGCTCC
TACTTGATGGTCAACACTTCCCAGCATGCCCCAGGCCAGCGAGCCCATGTATCTTCCAGAGCCTGAGCG
AGAATGATACCCACTGTGTGCAGTTCAGTACTTCTGTACAGCCGGGACGGGCACAGCCCGGGCACCT
GGCGCTTACGTGCGCGTAAATGGGGGCCCCCTGGGCAGTGCTGTGTGGAATATGACTGGATCCACGGC
CGTCAGTGGCACAGGCTGAGCTGGCTGTGCACTTTCTGGCCCAATGAATATCAGGTGCTGTTTGAGG
CCCTCATCTCCCCAGACCGCAGGGGCTACATGGGCCTAGATGACATCCTGCTTCTCAGTACCCCTGCGC
AAAGGCCCCACACTTCTCCCGCTGGGCGACGTGGAGGTCAACGCGGGCCAGAACGCGTCTGTTCCAGTGC
ATGGCCGCGGGCAGAGCGGCCGAGGCCGAACGCTTCTCTTGAACGCGCAGAGCGGGGCGTGGTGCCGG
CGGCGGGCGTGCAGCACATCAGCCACCGGCGCTTCTGGCCACTTCCCGCTGGCTGCCGTGAGCCGCGC
CGAGCAGGACCTGTACCGCTGTGTGTCCAGGCCCGCGCGGGCGTCTCTAACTTCGCGGAGCTC
ATCGTCAAGGAGCCCCAACTCCATCGCGCCCCACAGCTGCTGCGTGGCCCCACCTACCTCATCA
TCCAGCTCAACACCAACTCCATCATTGGCGACGGGCCGATCGTGCGAAGGAGATTGAGTACCGCATGGC
GCGCGGGCCCTGGGCTGAGGTGCACGCCGTGAGCCTGCAGACCTACAAGTGTGGCACCTCGACCCCGAC
ACAGAGTATGAGATCAGCGTGCTGCTCACGCGTCCCGGAGACGGCGGCACTGGCCGCCCTGGGCCACCC
TCATCAGCCGCACCAAATGCGCAGAGCCCATGAGGGCCCCAAAGGCTGGCTTTTGTGAGATCCAGGC
CCGTGAGTACCTGACCTGAGTGGGAACACTGGGCTACAACGTGACGCGTTGCCACACCTATACTGTGTCG
CTGTGCTATCACTACCCCTGGGACGACGCCACAACCAGACCATCCGAGAGTGTGTAAGACAGAGCAAG
GTGTGAGCGCTACACCATCAAGAACCTGCTGCCCTATCGGAACGTTACGTGAGGCTTGTCTCTACTAA
CCCTGAGGGGCGCAAAGAGGGCAAGGAGTCACTTCCAGACGGATGAGGATGTGCCAGTGGGATTGCA



[View online >](#)

GCCGAGTCCCTGACCTTCACTCCACTGGAGGACATGATCTTCTCAAGTGGGAGGAGCCCCAGGAGCCCA
ATGGTCTCATACCCAGTATGAGATCAGCTACCAGAGCATCGAGTCATCAGACCCGGCAGTGAACGTGCC
AGGCCACGACGTACCATCTCCAAGCTCCGCAATGAGACCTACCATGTCTTCTCCAACCTGCACCCAGGC
ACCACCTACCTGTTCTCCGTGCGGGCCCGCACAGGCAAAGGCTTCGGCCAGGCGGCACTCACTGAGATAA
CCACTAACATCTCTGCTCCAGCTTTGATTATGCCGACATGCCGTACCCCTGGGCGAGTCTGAGAACAC
CATCACCGTGTCTGAGGCCGGCACAGGGCCGGTGCGCCATCAGTGTGTACCAGGTGATTGTGGAG
GAGGAGCGGGCGCGGAGGCTGCGCGGGAGCCAGGTGGACAGGACTGCTTCCCAGTGCCATTGACCTTCG
AGGCGGCCCTGGCCGAGGCTGGTGCCTACTTCGGGGCCGAAGTGGCGGCCAGCAGTCTACCTGAGGC
CATGCCCTTTACCGTGGGTGACAACCAGACCTACCAGGCTTCTGGAACCCACCCTTGAGCCTAGGAAG
GCCTATCTCATCTACTTCCAGGCAGCAAGCCACCTGAAGGGGGAGACCCGGCTGAATTGCATCCGCATTG
CCAGGAAAGCTGCCTGCAAGGAAAGCAAGCGGCCCTGGAGGTGTCCAGAGATCGGAGGAGATGGGGCT
TATCTGGGCATCTGTGCAGGGGGCTTGTGTCTCATCTTCTCTGGGTGCCATCATTGTATCATC
CGCAAAGGAAGCCGGTGAACATGACCAAGGCCACCGTCAACTACCGCCAGGAGAAGACACACATGATGA
GCGCCGTGGACCCGAGCTTCACAGACCAGAGCACCTGCAGGAGGACGAGCGGCTGGGCCTGTCTTCAT
GGACCCCATGGCTACAGCACCCGGGAGACCAGCGCAGCGGTGGGGTCACTGAGCCAGCAGCCTCCTG
GGGGGCTCCCCGAGGCGTCCCTGTGGCCGAAGGCTCCCATACACACGGGGCAGCTGCACCCCTGCGG
TGCGTGTGCGAGACCTTCTGCAGCACATCAACCAGATGAAGACGCGCCGAGGGTTACGGCTTCAAGCAGGA
GTATGAGAGCTTCTTTGAAGGCTGGGACGCCACAAGAAGAAAGACAAGGTCAAGGGCAGCCGGCAGGAG
CCAATGCCTGCCTATGATCGGCACCGAGTAAAAGTGCACCCGATGCTGGGAGACCCCAATGCCGACTACA
TTAATGCCAACTACATAGATGGTTACCACAGGTCAAACCACTTCAAGCCACTCAAGGGCCGAAGCCTGA
GATGGTCTATGACTTCTGGCGTATGGTGTGGCAGGAGCACTGTCCAGCATCGTCATGATACCAAGCTG
TTCGAGGTGGGACGGGTAAAATGCTCACGGTACTGGCCGGAGGACTCAGACACCTACGGGGACATCAAGA
TTATGCTGGTGAAGACAGAGACCCTGGCTGAGTATGTCGTGCGCACTTTTGGCCTGGAGCGGAGGGTCA
CTCTGCCCGGCACGAGGTCCGCCAGTTCACCTTACAGCGTGGCCAGAGCATGGCGTCCCTACCATGCC
ACGGGGCTGTGGCTTTCATCCGCGCGTGAAGGCCTCCACCCACCTGATGCCGGGCCATTGTATCC
ACTGCAGCGCGGCCACCGGCCGACAGGTTGCTATATCGTCTGGATGTGATGCTGGACATGGCAGAGTG
TGAGGGCGTCTGGACATTTACAACCTGTGTGAAGACTCTCTGCTCCCGCGTGTCAACATGATCCAGACT
GAGGAGCAGTACATCTTCATTATGATGCAATCCTGGAGGCTGCCTGTGTGGGAGACCACCATCCCTG
TCAGTGAGTTCAAGGCCACCTACAAGGAGATGATCCGATTGATCCTCAGAGTAATTCTCCAGCTGCG
GGAAGAGTTCCAGACGCTGAACCTCGTCAACCCCGCTGGACGTGGAGGAGTGCAGCATCGCCCTGTTG
CCCCGAAACCGGACAAGAACCAGCAGATGGACGTCCTGCCGCCGACCCTGCCTGCCCTTCTCATCT
CCACTGATGGGGACTCCAACAACCTACATTAATGCAGCCCTGACTGACAGCTACACACGGAGTGGCGCCT
CATCGTGACCCTGCACCCGCTGCAGAGCACACGCCCAGCTTCTGGCGGCTGGTCTACGATTACGGGTGC
ACCTCCATCGTCATGCTCAACCAGCTGAACCAGTCCAACCTCCGCCTGGCCCTGCCTGCAGTACTGGCCAG
AGCCAGGCCGGCAGCAATATGGCCTCATGGAGGTGGAGTTTATGTGGGCACAGCTGATGAAGACTTAGT
GGCTCGAGTCTTCCGGGTGACAGAACATCTCTCGGTTGCAGGAGGGGCACCTGCTGGTGGCGCACTCCAG
TTCCTGCGCTGGTCTGCATACCGGGACACACCTGACTCCAAGAAGGCCTTCTTGCACCTGCTGGCTGAGG
TGGACAAGTGGCAGGCCGAGAGTGGGGATGGGCGCACCATCGTGCCTGCCTAACGGGGGAGGACGCGAG
CGGCACCTTCTGCGCCTGCGCCACGGTCTGGAGATGATCCGCTGCCACAACCTGGTGGAGGTTTTCTTT
GCTGCCAAAACCTCCGGAACCTACAACCCAACATGGTGGAGACCATGGATCAGTACCACCTTTTGTACG
ATGTGGCCCTGGAGTACTTGGAGGGCTGGAGTCAAGA

AGCGGACCGACGCGTACGCGGCCGCTCGAG - GFP Tag - GTTTAA

Protein Sequence: >RG222871 representing NM_133178
 Red=Cloning site Green=Tags(s)

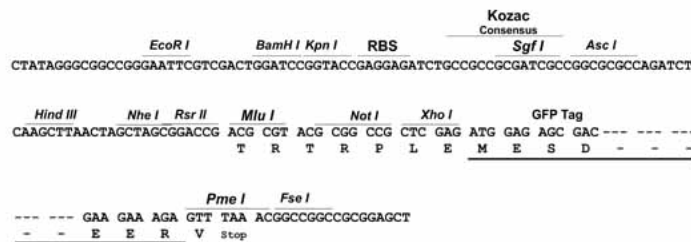
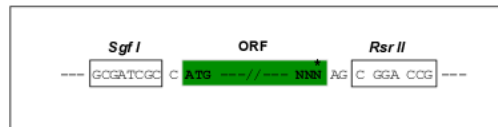
MARAQALVLALTFQLCAPETETPAAGCTFEEASDPAVPCEYSQAQYDDFQWEQVRIHPGTRAPADLPHGS
 YLMVNTSQHAPGQRAHVIFQSLSENDTHCVQFSYFLYSRDGHSPTGLGVYVRVNGGPLGSAVWNMTGSHG
 RQWHQAEALAVSTFWPNEYQVLFALISPDRRGYMGLDDILLLSYPCAKAPHFSRLGDVEVNAGQNASFQC
 MAAGRAAEAEERFLLQRQSGALVPAAGVRHISHRRFLATFPLAAVSRAEQDLYRCVSOAPRGAGVSNFAEL
 IVKEPPTPIAPPQLLRAGPTYLI IQLNTNSIIGDGPVIRKEIEYRMARGPWAEVHAVSLQTYKLWHLDPD
 TEYEISVLLTRPGDGGTGRPGPPLISRTKCAEPMRAPKGLAFAEIQARQLTLQWEPLGYNVTRCHTYTVS
 LCYHYTLGSSHNQTIRECVKTEQGVSRYSYTIKNLLPYRNVHVRVLVTNPEGRKEGKEVTFQTDDEVPVSGIA
 AESLTFPLEDMIFLKWEEPQEPNGLITQYEISYQSISSDPVNVVPGPRRTISKLRNETYHVFSNLHPG
 TTYLFSVRARTGKGFQAALTEITTNISAPSFYADMPSPLESENTITVLLRPAQGRGAPISVYQVIVE
 EERARRLRREPGGQDCFPVPLTFEAALARGLVHYFGAELAASSLPEAMPFTVGDNQTYRGFVWNPPEPRK
 AYLIYFQAASHLKGETRLNCIRIARKAACKESKRPLEVSRSEEMGLILGICAGGLAVLILLGAIIVII
 RKGKPVNMTKATVNYRQEKTHMMSAVDRSFTDQSTLQEDERLGLSFMMDTHGYSTRGDQRSGGVTEASSLL
 GGSPRRPCGRKGSPTYHTGQLHPAVRVADLLQHINQMKTAEYGFYKQEEYEFFEGWDATKKKDKVKGSRQE
 PMPAYDRHRVKLHPMLGDPNADYINANYIDGYHRSNHFIATQGGPKPEMVYDFWRMVWQEHCSIVMITKL
 VEVGRVKCSRYWPEDSDTYGDIKIMLVKTETLAEYVVRTFALERRGYSARHEVRQFHFTAWPEHGVPYHA
 TGLLAFIRRVKASTPPDAGPIVIHCSAGTGRTGCYIVLDVMDMAECEGVVDIYNVCKTLCSSRVNMIQT
 EEQYIFIHDAILEACLGETTIPVSEFKATYKEMIRIDPQSNSSQLREEFQTLNSVTPPLDVEECISIAL
 PRNRDKNRSMDVLPDRCLPFLISTDGSNNYINAALTDSYTRSAFIVTLHPLQSTTPDFWRLVVDYGC
 TSIVMLNQLNQNSAWPCLQYWPEPGRQYGLMEVEFMSGTADEDLVARVFRVQNI SRLQEGHLLVRHFQ
 FLRWSAYRDTPDSKKAFLHLLAEVDKWQAESGDGRTIVHCLNNGGGRSGTFCACATVLEMIRCHNLVDVFF
 AAKTLRNYKPNMVETMDQYHFCYDVALEYLEGLSR

SGPTRRRLE - GFP Tag - V

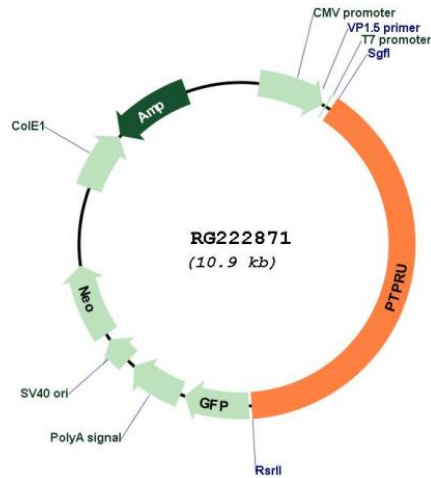
Restriction Sites: SgfI-RsrII

Cloning Scheme:

Cloning sites used for ORF Shuttling:



Plasmid Map:



ACCN: NM_133178

ORF Size: 4308 bp

OTI Disclaimer: Due to the inherent nature of this plasmid, standard methods to replicate additional amounts of DNA in E. coli are highly likely to result in mutations and/or rearrangements. Therefore, OriGene does not guarantee the capability to replicate this plasmid DNA. Additional amounts of DNA can be purchased from OriGene with batch-specific, full-sequence verification at a reduced cost. Please contact our customer care team at custsupport@origene.com or by calling 301.340.3188 option 3 for pricing and delivery.

The molecular sequence of this clone aligns with the gene accession number as a point of reference only. However, individual transcript sequences of the same gene can differ through naturally occurring variations (e.g. polymorphisms), each with its own valid existence. This clone is substantially in agreement with the reference, but a complete review of all prevailing variants is recommended prior to use. [More info](#)

OTI Annotation:	This clone was engineered to express the complete ORF with an expression tag. Expression varies depending on the nature of the gene.
Components:	The ORF clone is ion-exchange column purified and shipped in a 2D barcoded Matrix tube containing 10ug of transfection-ready, dried plasmid DNA (reconstitute with 100 ul of water).
Reconstitution Method:	<ol style="list-style-type: none">1. Centrifuge at 5,000xg for 5min.2. Carefully open the tube and add 100ul of sterile water to dissolve the DNA.3. Close the tube and incubate for 10 minutes at room temperature.4. Briefly vortex the tube and then do a quick spin (less than 5000xg) to concentrate the liquid at the bottom.5. Store the suspended plasmid at -20°C. The DNA is stable for at least one year from date of shipping when stored at -20°C.
RefSeq:	NM_133178.4
RefSeq Size:	5602 bp
RefSeq ORF:	4311 bp
Locus ID:	10076
UniProt ID:	Q92729
Cytogenetics:	1p35.3
Protein Families:	Transmembrane
Gene Summary:	<p>The protein encoded by this gene is a member of the protein tyrosine phosphatase (PTP) family. PTPs are known to be signaling molecules that regulate a variety of cellular processes including cell growth, differentiation, mitotic cycle, and oncogenic transformation. This PTP possesses an extracellular region, a single transmembrane region, and two tandem intracellular catalytic domains, and thus represents a receptor-type PTP. The extracellular region contains a meprin-A5 antigen-PTP (MAM) domain, Ig-like and fibronectin type III-like repeats. This PTP was thought to play roles in cell-cell recognition and adhesion. Studies of the similar gene in mice suggested the role of this PTP in early neural development. The expression of this gene was reported to be regulated by phorbol myristate acetate (PMA) or calcium ionophore in Jurkat T lymphoma cells. Alternatively spliced transcript variants have been reported. [provided by RefSeq, Aug 2010]</p>