

Product datasheet for **RG222855**

SLC6A12 (NM_003044) Human Tagged ORF Clone

Product data:

| | |
|---------------------------|--|
| Product Type: | Expression Plasmids |
| Product Name: | SLC6A12 (NM_003044) Human Tagged ORF Clone |
| Tag: | TurboGFP |
| Symbol: | SLC6A12 |
| Synonyms: | BGT-1; BGT1; GAT2 |
| Mammalian Cell Selection: | Neomycin |
| Vector: | pCMV6-AC-GFP (PS100010) |
| E. coli Selection: | Ampicillin (100 ug/mL) |



[View online »](#)

ORF Nucleotide Sequence:

>RG222855 representing NM_003044
 Red=Cloning site Blue=ORF Green=Tags(s)

TTTTGTAATACGACTCACTATAGGGCGGCCGGAATTCGTCGACTGGATCCGGTACCGAGGAGATCTGCC
 GCC**CGGATCGCC**

ATGGACGGGAAGGTGGCAGTGCAAGAGCGTGGGCCTCCTGCGGTCTCCTGGGTCCCCGAGGAGGAGAGA
 AGTTGGACCAGGAAGACGAGGACCAGGTGAAGGATCGGGGCCAATGGACCAACAAGATGGAGTTTGTGCT
 GTCAGTGGCCGGGAGATCATTGGGCTGGCAATGTCTGGAGTTTCCCTATCTCTGCTACAAAAACGGA
 GGTGGAGCCTTCTCATCCCCTACTTTCATCTTCTTCTTTGTCTGCGGCATCCCGGTGTTCTTCTGGAGG
 TGGCGTTGGCCAATACACCAGCAAGGGAGTGTACAGCCTGGAGGAAGATCTGCCCCCTCTCCAGGG
 CATTGGTCTGGCATCTGTGGTATCGAGTCATATTTGAATGTCTACTACATCATCATCTTGCCTGGGCT
 CTCTTCTACCTGTTTCTGAGTCTTCACTTCTGAGCTGCCCTGGACGACCTGCAACAACCTTTTGAACACAG
 AGCATTGCACGGACTTTCTGAACCACTCAGGAGCCGGCACAGTGACCCCATTTGAGAATTTACCTCACC
 TGTCTGGAATTTCTGGGAGAGACGAGTTCTGGGCATCACCTCGGGCATCCATGACCTGGGCTCCCTGCGC
 TGGGAGCTGGCCCTGTGCCTCCTGCTCGCTGGGTCTGCTATTTCTGCATCTGGAAGGGGTCAAGT
 CCACAGGCAAGGTGGTTTATTTACAGCCACGTTTCCGTACCTGATGCTTGTCTATTTTGTGATCAGAGG
 TGTACCCTTCCCGGAGCCTACCAGGGCATCATCTACTACTTGAAGCCAGATTTGTTCCGCCTCAAGGAC
 CCTCAGGTGTGGATGGATGCGGGCACCCAGATCTTCTTCTCCTTTGCCATCTGCCAGGGGTGCCTGACAG
 CCCTGGGCAGCTACAACAAGTATACAACAACCTGCTACAAGGACTGCATCGCCCTCTGCTTCTGAAACAG
 TGCCACCAGCTTTGTGGCTGGGTTTGTGTCTTCTCCATCCTGGGCTTATGTCCAAGAGCAAGGGGTG
 CCCATTTCTGAAGTGGCCGAGTCAGTCTGGGCTGGCCTTATCGCCTTCCCAAGGCTGTGACTATGA
 TGCCCTTATCCCAGCTGTGGTCTGCCTGTTCTTTATCATGCTCATATTCTAGGCTGGACAGCCAGTT
 TGTCTGTGTGGAGTGCCTGGTGACAGCCTCCATAGACATGTTCCCGAGGACCTCCGGAAGAGCGGGCGG
 CGCGAGCTCCTCATCCTACCATCGCCGTATGTGCTACCTGATAGGGCTTTTCTGTGACCGAGGGCG
 GGATGTACATTTTCCAGCTGTTTACTACTATGCTTCCAGTGGCATATGCCTGCTGTTTCTGTCTATTGTT
 TGAAGTGGTCTGCATAAGCTGGGTGATGGGGCGGACCGTTTCTATGACAACATTGAGGACATGATTGGC
 TACCGGCATGGCCCTGGTGAAGATCTCCTGGCTTCTCCTGACCCCTGGACTTTGCCTGGCCACTTTCC
 TCTTCTCCTTGAAGCAAGTACACCCCTCAAGTACAACAACGCTATGTGTACCCGCCCTGGGATACTC
 CATTGGCTGGTCTGCTCCTCCATGGTCTGTGTCCACTTTCGTGTCATCACCTCCTGAAG
 ACTCGGGTCTTTCAGGAAGCGTCTGCGTCAGCTCATACCCCTGACTCCAGTCTGCCACAGCCCAAGC
 AACATCCCTGCTTGGATGGCAGTCTGGCCGGAACCTTTGGGCCCTCCCAACAAGGAAGGACTGATAGC
 CGGGGAGAAGGAGACCCATTTG

ACGCGTACGCGGCCGCTCGAG – GFP Tag – GTTTAA

Protein Sequence:

>RG222855 representing NM_003044
 Red=Cloning site Green=Tags(s)

MDGKVAVQERGPAPVSWVPEEGEKLDQEDEDQVKDRGQWTNKMEFVLSVAGEIIGLGNVWRFYPYLCYKNG
 GGAFFIPYFIFFVCGIPVFFLEVALGQYTSQGSVTAWRKICPLFQIGLASVVIIESYLNYYIIILAWA
 LFYLFSSFTSELPWTTCCNNFWNTEHCTDFLNHSGAGTVTPFENFTSPVMEFWERRVLGITSGIHDLSLR
 WELALCLLLAWICYFCIWKGVKSTGKVVYFTATFPYLMLVILLIRGVTLPGAYQGIYYLKPDLFRLKD
 PQVWMDAGTQIFFSFAICQGLTALGSYNKYHNNCYKDCIALCFLNSATSFVAGFVVFVILGFMSQEQGV
 PISEVAESGPGLAFAIAPKAVTMMPLSQLWSCLFFIMLIFLGLDSQFVCECLVTASIDMFPRQLRKSGR
 RELLILTIIVMICYLIGLFLVTEGMYIFQLFDYYASSGICLLFLSLFEVVICISWVYGADRFYDNIEMIG
 YRPWPLVKISWFLTPGLCLATFLFSLSKYTPLKYNVYVYPPWGYSIGWFLALSSMVCVPLFVVITLLK
 TRGPFKRRLRQLITPSSLPQPKQHPCLDGSAGRNFGPSPTREGLIAGEKETHL

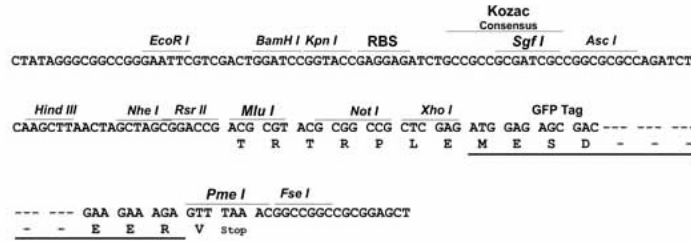
TRTRPLE – GFP Tag – V

Restriction Sites:

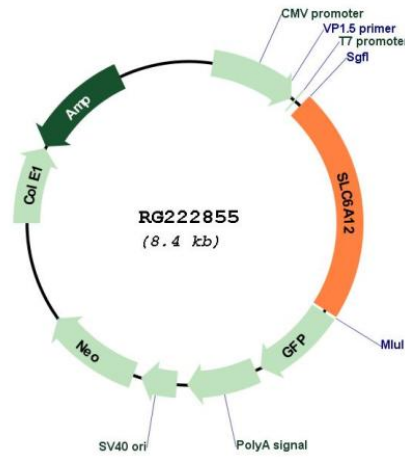
SgfI-MluI

Cloning Scheme:

Cloning sites used for ORF Shutting:



Plasmid Map:



ACCN: NM_003044
 ORF Size: 1842 bp

| | |
|-------------------------------|---|
| OTI Disclaimer: | The molecular sequence of this clone aligns with the gene accession number as a point of reference only. However, individual transcript sequences of the same gene can differ through naturally occurring variations (e.g. polymorphisms), each with its own valid existence. This clone is substantially in agreement with the reference, but a complete review of all prevailing variants is recommended prior to use. More info |
| OTI Annotation: | This clone was engineered to express the complete ORF with an expression tag. Expression varies depending on the nature of the gene. |
| Components: | The ORF clone is ion-exchange column purified and shipped in a 2D barcoded Matrix tube containing 10ug of transfection-ready, dried plasmid DNA (reconstitute with 100 ul of water). |
| Reconstitution Method: | <ol style="list-style-type: none">1. Centrifuge at 5,000xg for 5min.2. Carefully open the tube and add 100ul of sterile water to dissolve the DNA.3. Close the tube and incubate for 10 minutes at room temperature.4. Briefly vortex the tube and then do a quick spin (less than 5000xg) to concentrate the liquid at the bottom.5. Store the suspended plasmid at -20°C. The DNA is stable for at least one year from date of shipping when stored at -20°C. |
| RefSeq: | NM_003044.2 , NP_003035.2 |
| RefSeq Size: | 3410 bp |
| RefSeq ORF: | 1845 bp |
| Locus ID: | 6539 |
| UniProt ID: | P48065 |
| Cytogenetics: | 12p13.33 |
| Protein Families: | Druggable Genome, Transmembrane |
| Gene Summary: | Transports betaine and GABA. May have a role in regulation of GABAergic transmission in the brain through the reuptake of GABA into presynaptic terminals, as well as in osmotic regulation.[UniProtKB/Swiss-Prot Function] |