

Product datasheet for **RG222849**

GALNT8 (NM_017417) Human Tagged ORF Clone

Product data:

Product Type:	Expression Plasmids
Product Name:	GALNT8 (NM_017417) Human Tagged ORF Clone
Tag:	TurboGFP
Symbol:	GALNT8
Synonyms:	GALNAC-T8
Mammalian Cell Selection:	Neomycin
Vector:	pCMV6-AC-GFP (PS100010)
E. coli Selection:	Ampicillin (100 ug/mL)



[View online »](#)

ORF Nucleotide Sequence:

>RG222849 representing NM_017417
 Red=Cloning site Blue=ORF Green=Tags(s)

TTTTGTAATACGACTCACTATAGGGCGGCCGGAATTCGTCGACTGGATCCGGTACCGAGGAGATCTGCC
 GCC**CGGATCGCC**

ATGATGTTTTGGAGAACTCCCAAAGCCTCTTCATTGGGCTGACTCTGGCCATTGCTGTCAATCTCC
 TTCTGGTATTTTCTAGCAAGGGGACTTTACAAAACCTGTTTACGGGTGGTCTCCACAGGGAGCTTCCTTT
 ACATCTGAATAAACGCTACGGGGCAGTGATAAAGAGACTCTCCCACTGGAGGTGAATGCAGGATCTG
 AAAGAAAGTATGAAATTAGCTCTGAGGCAACAAGAAAATGTGAACAGCAGACTGAAGAGGGCGAAAGATG
 AAGTACGCCCTCTTCTAAAGGCAATGGAACCAAGGTGAATGAGACAAAGAAGCAGCAAAACCCAAATGAA
 ACTCTCCACACTCACAGCTTTTCAGGCAATGGGGCAGGATCTTTCTGAGGCCAGCAGAAGGGCGGCC
 CAGGACCTCTCCGGAAGTTGGTTACAACGCGTACCTCAGCAACCAGCTGCCTCTCAATCGCACCATCC
 CCGACACGCGAGACTACAGATGTCTTCGGAAGACATATCCTTCCCACTCCCATCCCTCAGTGTCTTCT
 CATATTCGTGAATGAAGCTCTGTCCATTATACAACGGGCCATCACCAGTATCATCAACGGAGCCCTCT
 CGATTGTTGAAGGAAATCATCTTGGTGGATGATTCAGCTCAAAATGGAGAACTAAAGGTACACTTGGATG
 AGAAGATTAAGCTTTACAACCAGAAGTATCCAGGACTACTGAAAATAATACGGCATCCTGAAAGGAAAGG
 TCTTGCTCAAGCCGCAACACTGGCTGGGAAGCTGCCACAGCAGACGTGGTCGCCATCTTGGATGCTCAC
 ATTGAAGTCAATGTTGGGTGGCAGAGCCAATCTTGGCTCGGATTCAGGAGGACCGCACTGTGATTGTGT
 CTCCTGTGTTTGACAACATTCGTTTTGACACCTCAAACCTGGATAAGTATGAACTGGCAGTTGATGGGTT
 TAACTGGGAACCTGGTCCGCTACGATGCACTGCCACAAGCCTGGATTGATCTGCATGATGTCACTGCC
 CCAGTGAAGAGTCCTTCAATCATGGGCATCCTGGCTGCTAACAGGCACTCCTGGGAGAGATCGGGTCTC
 TGGATGGTGAATGCTCATCTATGGAGGAGAGAACGTGGAGCTTAGCCTGAGGGTGTGGCAGTGGGAGG
 GAAGGTCGAGATTTTCCCTGTTCCCGGATTGCCACCTAGAGAGACACCACAAGCCCTACGCTTGGAT
 CTCACCGTGCCTGAAGCGCAATGCTCTGCGAGTGGCCGAAATCTGGATGGATGAGCACAAACACATGG
 TCTACTTGGCCTGGAACATACCTCTCCAGAACTCTGGAATAGATTTTGGAGACGTTTCTCCAGAATGGC
 ACTCCGGGAAAAACTGAAATGTAAAACCTTTGACTGGTACCTGAAAAATGTTTATCCACTCTTGAAGCCA
 CTCCACACCATCGTGGGCTATGGAAGAATGAAAAACCTATTGGATGAAAAATGCTGCTTGGATCAGGGAC
 CCGTTCAGGCAACACCCCATCATGTATTACTGCCATGAATTCAGCTCACAGAATGTCTACTATCACCT
 AACTGGGGAGCTCTATGTGGGCAACTGATTGCAGAGGCCAGTGTAGTATCGTGCCTGACAGACCT
 GGCAAGGGGAGAGAAGCCACCTTAGAACCATGCTCCAAGGCAGCTAAGAATAGACTGCATATATATTGGG
 ATTTTAAACCGGAGGAGCTGTCAAAACAGAGATACCAAGCGGTGTCTGGAGATGAAGAAGGATCTTTT
 GGGTAGCCACGTCTTGTGCTCCAGACCTGTAGCACGCAAGTGTGGGAAATCCAGCACACTGTCCAGAGAC
 TGGGGTCAGACCAACAGCCAG

AG**CGGACCG**ACGCGTACGCGGCCGCTCGAG - GFP Tag - GTTTAA

Protein Sequence:

>RG222849 representing NM_017417
 Red=Cloning site Green=Tags(s)

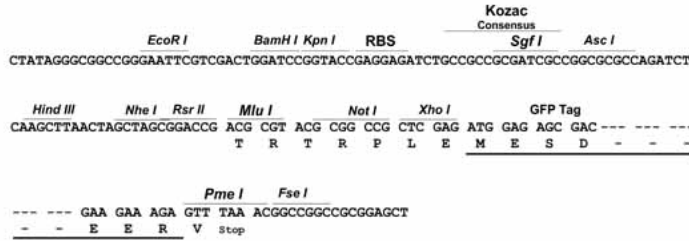
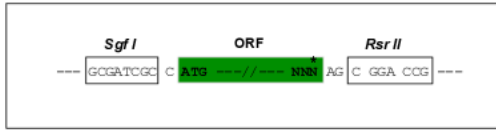
MMFWRKLPKALFIGLTLAIAVNLVLFSSKGLTQNLFTGGLHRELPLHLNKRYGAVIKRSHLEVELQDL
 KESMKLALRQQENVNSTLKRAKDEVPRLLKAMETKVNETKKHKTQMKLFPHSQFRQWGEDLSEAQQKAA
 QDLFRKFGYNAYLSNQLPLNRTIPDTRDYRCLRKYPSQLPSLSVILIFVNEALSIIQRAITSIINRTPS
 RLLKEIILVDDFSSNGELKVHLDEKIKLYNQYPLGLKIIIRHPERKGLAQARNTGWAAATADVVAILDH
 IEVNVGWAEPILARIQEDRTVIIVSPVFDNIRFDTFKLDKYELAVDGFNWELWCYDALPQAWIDLHDVTA
 PVKSPSIMGILAAANRHLGEIGSLDGGMLIYGGENVLSLRVWQCGGKVEILPCSRIAHLEHHPYALD
 LTAALKRNALRVAEIIWDEHKHMVYLAWNIPLQNSGIDFDVSSRMALREKLKCKTFDWYLNKVPYLLKP
 LHTIVGYGRMNLLDENVCLDQGPVPGNTPIMYYCHEFSSQNVYYHLTGELYVGGQIAEASASDRCLTDP
 GKAKEPTLEPCSKAAKNRLHIYWDFKPGGAVINRDTKRCLEMKDLLGSHVLLVLTQTCSTQVWEIQHTVRD
 WGQTN SQ

SGP**TRRRLE** - GFP Tag - V

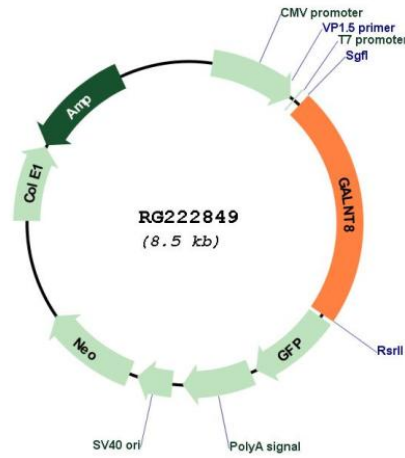
Restriction Sites: SgfI-RsrII

Cloning Scheme:

Cloning sites used for ORF Shuttling:



Plasmid Map:



ACCN: NM_017417

ORF Size: 1911 bp

OTI Disclaimer:	The molecular sequence of this clone aligns with the gene accession number as a point of reference only. However, individual transcript sequences of the same gene can differ through naturally occurring variations (e.g. polymorphisms), each with its own valid existence. This clone is substantially in agreement with the reference, but a complete review of all prevailing variants is recommended prior to use. More info
OTI Annotation:	This clone was engineered to express the complete ORF with an expression tag. Expression varies depending on the nature of the gene.
Components:	The ORF clone is ion-exchange column purified and shipped in a 2D barcoded Matrix tube containing 10ug of transfection-ready, dried plasmid DNA (reconstitute with 100 ul of water).
Reconstitution Method:	<ol style="list-style-type: none">1. Centrifuge at 5,000xg for 5min.2. Carefully open the tube and add 100ul of sterile water to dissolve the DNA.3. Close the tube and incubate for 10 minutes at room temperature.4. Briefly vortex the tube and then do a quick spin (less than 5000xg) to concentrate the liquid at the bottom.5. Store the suspended plasmid at -20°C. The DNA is stable for at least one year from date of shipping when stored at -20°C.
RefSeq:	NM_017417.2
RefSeq Size:	2135 bp
RefSeq ORF:	1914 bp
Locus ID:	26290
UniProt ID:	Q9NY28
Cytogenetics:	12p13.32
Protein Families:	Transmembrane
Protein Pathways:	Metabolic pathways, O-Glycan biosynthesis
Gene Summary:	This gene encodes a member of the UDP-N-acetyl-alpha-D-galactosamine:polypeptide N-acetylgalactosaminyltransferase (GalNAc-T) family of enzymes. GalNAc-Ts initiate mucin-type O-linked glycosylation in the Golgi apparatus by catalyzing the transfer of GalNAc to serine and threonine residues on target proteins. They are characterized by an N-terminal transmembrane domain, a stem region, a luminal catalytic domain containing a GT1 motif and Gal/GalNAc transferase motif, and a C-terminal ricin/lectin-like domain. GalNAc-Ts have different, but overlapping, substrate specificities and patterns of expression. [provided by RefSeq, Jul 2008]