

Product datasheet for **RG222844**

Dermokine (DMKN) (NM_033317) Human Tagged ORF Clone

Product data:

Product Type:	Expression Plasmids
Product Name:	Dermokine (DMKN) (NM_033317) Human Tagged ORF Clone
Tag:	TurboGFP
Symbol:	DMKN
Synonyms:	UNQ729; ZD52F10
Mammalian Cell Selection:	Neomycin
Vector:	pCMV6-AC-GFP (PS100010)
E. coli Selection:	Ampicillin (100 ug/mL)



[View online »](#)

ORF Nucleotide Sequence:

>RG222844 representing NM_033317
 Red=Cloning site Blue=ORF Green=Tags(s)

TTTTGTAATACGACTCACTATAGGGCGGCCGGAATTCGTCGACTGGATCCGGTACCGAGGAGATCTGCC
 GCC**CGCATCGCC**

ATGAAGTTCAGGGGCCCTGGCCTGCCTCCTGCTGGCCCTCCTGCTGGGAGTGGGGAGGCTGGCCCC
 TGCAGAGCGGAGAGGAAAGCACTGGGACAAATATTGGGGAGGCCCTTGGACATGGCTGGGAGACGCCCT
 GAGCGAAGGGGTGGGAAAAGGCCATTGGCAAAGAGGCCGGAGGGGAGCTGGCTCTAAAGTCAGTGAGGCC
 CTTGGCCAAGGGACCAGAGAAGCAGTTGGCACTGGAGTCAGGCAGGTTCCAGGCTTTGGCGTAGCAGATG
 CTTTGGGCAACAGGGTCGGGGAAGCAGCCCATGCTCTGGGAAACACTGGGCACGAGATTGGCAGACAGGC
 AGAAGATGTCATTGACACGGAGCAGATGCTGTCCGCGGCTCCTGGCAGGGGTGCCTGGCCACAATGGT
 GCTTGGGAAACTTCTGGAGGCCATGGCATCTTTGGCTCTCAAGGTGGCCTTGGAGGCCAGGGCCAGGGCA
 ATCCTGGAGGTCTGGGGACTCCGTGGGTCCACGGATACCCCGAAACTCAGCAGGCAGCTTTGGAATGAA
 TCCTCAGGGAGCTCCCTGGGGTCAAGGAGGCAATGGAGGGCCACCAAACCTTTGGGACCAACTCAGGGA
 GCTGTGGCCAGCTGGCTATGGTTCAGTGAGAGCCAGCAACCAGAATGAAGGGTGCACGAATCCCCCAC
 CATCTGGCTCAGGTGGAGGCTCCAGCAACTCTGGGGGAGGCAGCGGCTCACAGTCGGGCAGCAGTGGCAG
 TGGCAGCAATGGTGACAACAACAATGGCAGCAGCAGTGGTGGCAGCAGCAGTGGCAGCAGCAGTGGCGGC
 AGCAGTGGCGGCAGCAGTGGTGGCAGCAGTGGCAACAGTGGTGGCAGCAGAGGTGACAGCGGCAGTGA
 CCTCTGGGGATCCAGCACCGGCTCCTCCTCCGGCAACCACGGTGGGAGCGGGGAGGAAATGGACATAA
 ACCCGGGTGTGAAAAGCCAGGGAATGAAGCCCGGGGAGCGGGGAATCTGGGATTCAGAACTCTGAGACG
 TCTCCTGGGATGTTAACTTTGACACTTTCTGGAAGAATTTAAATCCAAGCTGGGTTTCATCAACTGGG
 ATGCCATAACAAGAACCAGGTCCCGCCCCCAGCAGCCCTCCTACTTCAGCCGACTCTGGGA
 GGATTTCAAACAGAACAATCCTTTCTCAACTGGAAGCAATTATTGAGGGTGGCAGCGGTCATCACTG
 CAGAAACGTGCAGGCAGAGCCGATCAGAACTACAATTACAACCAGCATGCGTATCCCACTGCCTATGGTG
 GGAAGTACTAGTCAAGACCCCTGCAAAGGGGGAGTCTCACCTTCTCCTCGGCTTCCCGGGTGAAC
 TGGCCTGCTGCAGTGGGTGAAGTTTGG

AG**CGGACCG**ACGCGTACGCGGCCGCTCGAG - GFP Tag - GTTTAA

Protein Sequence:

>RG222844 representing NM_033317
 Red=Cloning site Green=Tags(s)

MKFQGPLACLLLALCLGSGEAGPLQSGEESTGTNIGEALGHGLGDALSEGVGKAIKKEAGGAAGSKVSEA
 LGQGTREAVGTGVRQVPFGVADALGNRVGEAAHALGNTGHEIGRQAEDVIRHGADAVRGSWQGVPHNG
 AWETSGGHGIFGSQGLGGQGNPGLGTPWVHGYPGNSAGSFGMNPQGAPWQGGNGGPPNFGTNTQG
 AVAQPGYGSVRASNQNEGCTNPPPSGSGGGSSNSGGGSGSQQSGSSGSGSNGDNNNGSSSGSSGSSGG
 SSGSSGSSGSSGSRGDSGSESSWGSSTGSSSGNHGSGGGNGHKPGCEKPGNEARGSGESGIQNSSET
 SPGMFNFDTFWKNFKSKLGFINWDAINKNQVPPPSTRALLYF SRLWEDFKQNTPFLNWKAIIEGADASSL
 QKRAGRADQNYNYNQHAYPTAYGGKYSVKTPAKGGVSPSSSASRVQPGLLQWVKFW

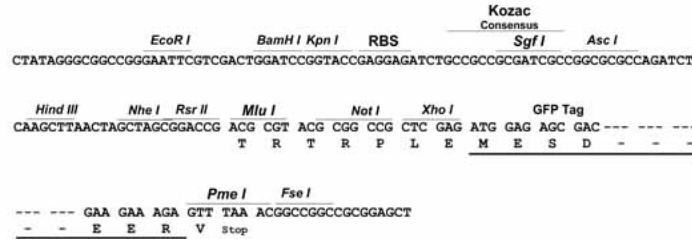
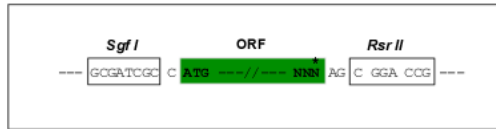
SGP**TRRRLE** - GFP Tag - V

Restriction Sites:

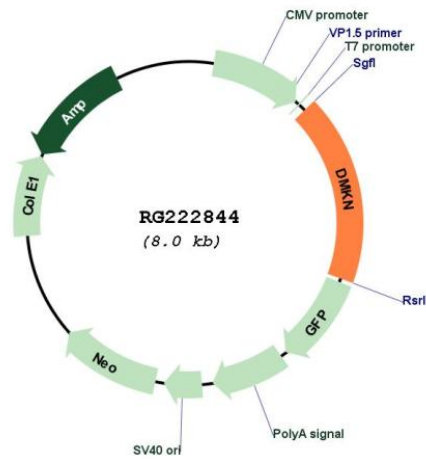
Sgfl-RsrII

Cloning Scheme:

Cloning sites used for ORF Shuttling:



Plasmid Map:



ACCN: NM_033317
 ORF Size: 1428 bp

OTI Disclaimer:	<p>Due to the inherent nature of this plasmid, standard methods to replicate additional amounts of DNA in E. coli are highly likely to result in mutations and/or rearrangements. Therefore, OriGene does not guarantee the capability to replicate this plasmid DNA. Additional amounts of DNA can be purchased from OriGene with batch-specific, full-sequence verification at a reduced cost. Please contact our customer care team at custsupport@origene.com or by calling 301.340.3188 option 3 for pricing and delivery.</p> <p>The molecular sequence of this clone aligns with the gene accession number as a point of reference only. However, individual transcript sequences of the same gene can differ through naturally occurring variations (e.g. polymorphisms), each with its own valid existence. This clone is substantially in agreement with the reference, but a complete review of all prevailing variants is recommended prior to use. More info</p>
OTI Annotation:	<p>This clone was engineered to express the complete ORF with an expression tag. Expression varies depending on the nature of the gene.</p>
Components:	<p>The ORF clone is ion-exchange column purified and shipped in a 2D barcoded Matrix tube containing 10ug of transfection-ready, dried plasmid DNA (reconstitute with 100 ul of water).</p>
Reconstitution Method:	<ol style="list-style-type: none">1. Centrifuge at 5,000xg for 5min.2. Carefully open the tube and add 100ul of sterile water to dissolve the DNA.3. Close the tube and incubate for 10 minutes at room temperature.4. Briefly vortex the tube and then do a quick spin (less than 5000xg) to concentrate the liquid at the bottom.5. Store the suspended plasmid at -20°C. The DNA is stable for at least one year from date of shipping when stored at -20°C.
RefSeq:	<p>NM_033317.4, NP_201574.3</p>
RefSeq Size:	<p>1946 bp</p>
RefSeq ORF:	<p>1431 bp</p>
Locus ID:	<p>93099</p>
UniProt ID:	<p>Q6E0U4</p>
Cytogenetics:	<p>19q13.12</p>
Gene Summary:	<p>This gene is upregulated in inflammatory diseases, and it was first observed as expressed in the differentiated layers of skin. The most interesting aspect of this gene is the differential use of promoters and terminators to generate isoforms with unique cellular distributions and domain components. Alternatively spliced transcript variants encoding different isoforms have been identified for this gene. [provided by RefSeq, Jun 2010]</p>