

Product datasheet for **RG222829**

JNK1 (MAPK8) (NM_139046) Human Tagged ORF Clone

Product data:

Product Type:	Expression Plasmids
Product Name:	JNK1 (MAPK8) (NM_139046) Human Tagged ORF Clone
Tag:	TurboGFP
Symbol:	MAPK8
Synonyms:	JNK; JNK-46; JNK1; JNK1A2; JNK21B1/2; PRKM8; SAPK1; SAPK1c
Mammalian Cell Selection:	Neomycin
Vector:	pCMV6-AC-GFP (PS100010)
E. coli Selection:	Ampicillin (100 ug/mL)
ORF Nucleotide Sequence:	>RG222829 representing NM_139046 Red=Cloning site Blue=ORF Green=Tags(s)

TTTTGTAATACGACTCACTATAGGGCGGCCGGAATTCGTCGACTGGATCCGGTACCGAGGAGATCTGCC
GCC**CGATCGCC**

ATGAGCAGAAGCAAGCGTGACAACAATTTTTATAGTGTAGAGATTGGAGATTCTACATTCACAGTCCTGA
AACGATATCAGAATTTAAAACCTATAGGCTCAGGAGCTCAAGGAATAGTATGCCAGCTTATGATGCCAT
TCTTGAAGAAATGTTGCAATCAAGAAGCTAAGCCGACCATTTGAGAATCAGACTCATGCCAAGCGGGCC
TACAGAGAGCTAGTTCTTATGAAATGTGTTAATCACAAAAATATAAATGGCCTTTTGAATGTTTTACAC
CACAGAAATCCCTAGAAGAATTTCAAGATGTTTACATAGTCATGGAGCTCATGGATGCAAATCTTTGCCA
AGTGATTCAGATGGAGCTAGATCATGAAAGAATGTCTACCTTCTCTATCAGATGCTGTGTGGAATCAAG
CACCTTCAATTCGCTGGAATTATTCATCGGGACTTAAAGCCAGTAATATAGTAGTAAAACTCGATTGCA
CTTTGAAGATTCTTGACTTCGGTCTGGCCAGGACTGCAGGAACGAGTTTTATGATGACGCCTTATGTAGT
GACTCGTACTACAGAGCACCCGAGGTCATCCTTGGCATGGGCTACAAGGAAAACGTTGACATTTGGTCA
GTTGGGTGCATCATGGGAGAAATGATCAAAGGTGGTGTGTTTGTCCAGGTACAGATCATATTGATCAGT
GGAATAAAGTTATTGAACAGCTTGAACACCATGTCTGAATTCATGAAGAACTGCAACCAACAGTAAG
GACTTACGTTGAAAACAGACCTAAATATGCTGGATATAGCTTTGAGAACTCTCCCTGATGTCCTTTTC
CCAGCTGACTCAGAACAACAACCTTAAAGCCAGTCAGGCAAGGATTGTTATCCAAAATGCTGGTAA
TAGATGCATCTAAAAGGATCTCTGTAGATGAAGCTCTCCAACACCCGTACATCAATGTCTGGTATGATCC
TTCTGAAGCAGAAGCTCCACCACCAAAGATCCCTGACAAGCAGTTAGATGAAAGGGAACACACAATAGAA
GAGTGGAAAGAATTGATATATAAGGAAGTTATGGACTTGGAGGAGAGAACCAAGAATGGAGTTATACGGG
GGCAGCCCTCTCTTTAGCACAGGTGCAGCAG

ACCGTACGCGGCCGCTCGAG - GFP Tag - GTTTAA



[View online »](#)

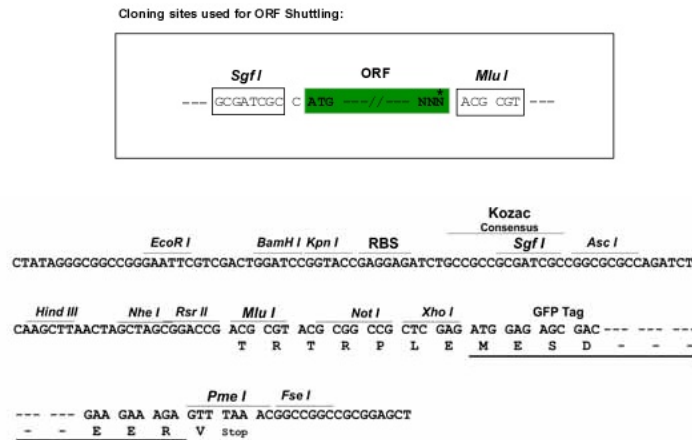
Protein Sequence: >RG222829 representing NM_139046
 Red=Cloning site Green=Tags(s)

MSRSKRDNFYSVEIGDSTFTVLKRYQNLKPIGSGAQQIVCAAYDAILERNVAIKKLSRPFQNTAKRA
 YRELVLMKCVNHKNIIGLLNVFTPQKSLEEFQDVYIVMELMDANLCQVIQMELDHERMSYLLYQMLCGIK
 HLHSAGIIHRDLKPSNIVVKSDCSTLKLDFGLARTAGTSFMMPYVVTRYRRAPEVILGMGYKENVDIWS
 VGCIMGEMIKGGVLFPGTDHIDQWNKVIEQLGTPCPEFMKKLQPTVRTYVENRPKYAGYSFEKLFDPVLF
 PADSEHNKLGASQARDLLSKMLVIDASKRISVDEALQHPYINVWYDPSEAEAPPKIPDKQLDEREHTIE
 EWKELIYKEVMDLEERTKNGVIRGQPSPLAQVQQ

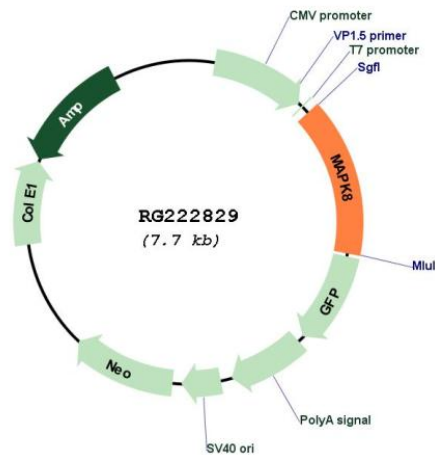
TRTRPLE - GFP Tag - V

Restriction Sites: SgfI-MluI

Cloning Scheme:



Plasmid Map:



ACCN: NM_139046

ORF Size:	1152 bp
OTI Disclaimer:	The molecular sequence of this clone aligns with the gene accession number as a point of reference only. However, individual transcript sequences of the same gene can differ through naturally occurring variations (e.g. polymorphisms), each with its own valid existence. This clone is substantially in agreement with the reference, but a complete review of all prevailing variants is recommended prior to use. More info
OTI Annotation:	This clone was engineered to express the complete ORF with an expression tag. Expression varies depending on the nature of the gene.
Components:	The ORF clone is ion-exchange column purified and shipped in a 2D barcoded Matrix tube containing 10ug of transfection-ready, dried plasmid DNA (reconstitute with 100 ul of water).
Reconstitution Method:	<ol style="list-style-type: none">1. Centrifuge at 5,000xg for 5min.2. Carefully open the tube and add 100ul of sterile water to dissolve the DNA.3. Close the tube and incubate for 10 minutes at room temperature.4. Briefly vortex the tube and then do a quick spin (less than 5000xg) to concentrate the liquid at the bottom.5. Store the suspended plasmid at -20°C. The DNA is stable for at least one year from date of shipping when stored at -20°C.
RefSeq:	NM_139046.4
RefSeq Size:	1417 bp
RefSeq ORF:	1155 bp
Locus ID:	5599
UniProt ID:	P45983
Cytogenetics:	10q11.22
Protein Families:	Druggable Genome, ES Cell Differentiation/IPS, Protein Kinase
Protein Pathways:	Adipocytokine signaling pathway, Colorectal cancer, Epithelial cell signaling in Helicobacter pylori infection, ErbB signaling pathway, Fc epsilon RI signaling pathway, Focal adhesion, GnRH signaling pathway, Insulin signaling pathway, MAPK signaling pathway, Neurotrophin signaling pathway, NOD-like receptor signaling pathway, Pancreatic cancer, Pathways in cancer, Progesterone-mediated oocyte maturation, RIG-I-like receptor signaling pathway, Toll-like receptor signaling pathway, Type II diabetes mellitus, Wnt signaling pathway

Gene Summary:

The protein encoded by this gene is a member of the MAP kinase family. MAP kinases act as an integration point for multiple biochemical signals, and are involved in a wide variety of cellular processes such as proliferation, differentiation, transcription regulation and development. This kinase is activated by various cell stimuli, and targets specific transcription factors, and thus mediates immediate-early gene expression in response to cell stimuli. The activation of this kinase by tumor-necrosis factor alpha (TNF-alpha) is found to be required for TNF-alpha induced apoptosis. This kinase is also involved in UV radiation induced apoptosis, which is thought to be related to cytochrom c-mediated cell death pathway. Studies of the mouse counterpart of this gene suggested that this kinase play a key role in T cell proliferation, apoptosis and differentiation. Several alternatively spliced transcript variants encoding distinct isoforms have been reported. [provided by RefSeq, Apr 2016]