

Product datasheet for **RG222817**

BIG1 (ARFGEF1) (NM_006421) Human Tagged ORF Clone

Product data:

Product Type:	Expression Plasmids
Product Name:	BIG1 (ARFGEF1) (NM_006421) Human Tagged ORF Clone
Tag:	TurboGFP
Symbol:	BIG1
Synonyms:	ARFGEF1; BIG1; P200
Mammalian Cell Selection:	Neomycin
Vector:	pCMV6-AC-GFP (PS100010)
E. coli Selection:	Ampicillin (100 ug/mL)
ORF Nucleotide Sequence:	>RG222817 representing NM_006421 Red=Cloning site Blue=ORF Green=Tags(s)

TTTTGTAATACGACTCACTATAGGGCGGCCGGAATTCGTCGACTGGATCCGGTACCGAGGAGATCTGCC
GCC**CGATCGCC**

ATGTATGAGGGGAAGAAGACGAAGAACATGTTCTGACCCGGGCTCTGGAGAAGATATTGGCCGACAAGG
AAGTGAAGAAGGCGCATCACTCCAGCTGCGCAAAGCTTGCAGGTGGCGTTAGAGGAAATAAAGCGGA
AACTGAAAACAGAGTCTCTCATGGAGAAGCAAAGCTGGATCAAGCACCCCTCCACCAGTGAATCA
AAGACAAATTTATTGAAGCAGACAAGTACTTCTTGCCTTTGAGTTGGCATGCCAGTCCAAATGCCTC
GCATAGTTAGTACATCTAGATTGCTTACAGAACTTATTGCTTATGGGCACTTGACTGGCAATGCTCC
AGATAGTACAACACCAGGCAAAAAATAATTGATAGAATTATTGAAACAATATGTGGCTGCTTTCAGGGC
CCTCAGACAGATGAAGGAGTTCAGCTGCAGATAATAAAGGCTTTACTTACTGCAGTAACATCACAAACA
TAGAAATTCATGAAGGGACTGACTGCAAGCTGTGAGAACATGTTACAATATCTACTTAGCAAGCAAAAA
TCTCATCAATCAGACAACAGCCAAAGCTACTCTCACTCAGATGCTAAATGTTATCTTTGCACGCATGGAA
AACCAAGCATTACAGGAAGCAAAACAAATGAAAAAGAAAGGCATCGGCAGCATCATCTGTTACAGT
CTCCAGTAAGCCATCACGAGCCTGAATCACCTCACTTAGATATTTGCCACCTCAGACTGTTGATCATAT
ATCCCAAGAACACGAAGGGGACCTTGACCTCCATACAAATGATGTAGATAAAAGTCTTCAGGATGACACA
GAGCCTGAAAATGGATCTGATATTTCCAGTGCAGAAAATGAACAGACTGAAGCTGATCAGGCAACTGCAG
CTGAAACATTATCTAAAAATGAAGTGTTATATGACGGAGAAAACCATGATTGTGAGGAAAAGCCACAAGA
CATTGTACAGAACATTGTAGAAGAAATGGTGAACATTGTTGTTGGAGATATGGGAGAAGGGACTACTATA
AATGCAAGTGCAGATGGCAACATTGGAATATAGAGGATGGTAGTGACAGTGAAAATATTCAAGCAATG
GAATTCAGGAACACCAATTTCTGTTGCATATACACCATCCTTACCTGATGATAGATTGTCAGTCTCTTC
CAATGATACTCAGGAATCTGAAATTTCTCAGGACCTTCACTGGTGCTAAGTTTTCCACATTTTACAA
AAGGATGCCTTTCTAGTATTCAGGTCATTGTGAAACTGTCAATGAAACCACTGTCAGATGGACCACCAG
ATCCAAAGTCTCATGAACTACGATCCAAGATTCTTTCATTGCAGTACTTCTATCCATTCTGCAGAAATGC
AGGACCTATTTTCAGGACAAATGAGATGTTTATAATGCTATTAAGCAGTATCTTTGTGTTGCACCTCA



[View online »](#)

AAAAATGGAGTCTCATCTGTTCCAGAGGTTTTGAGCTTCTCTTTCTATATTTCTTACTTTGTTGTCAA
ATTTCAAGACACATCTGAAGATGCAAAATGAGGTGTTCTTTAAAGAAATTTTCTTATACATTTTGGAAAC
TTCTACCAGCTCATTGATCACAAATGGATGGTATTTCAGACACTGACGAGGATTTGTCAGATGCTCAG
AGTGTAGTGGATATTTATGTAACATGACTGTGACTTAAATGCAGCCAATATATTTGAAAGACTAGTAA
ATGATCTATCAAAAATGCTCAAGGAAGGGCAGTCAAGAACTTGGTATGAGTAAATGTTCCAGGAATTGAG
CCTGAGGAAAAAGGTTTAGAATGCTTAGTGTGCTGATTTGAAAGTGTATGGTTGAATGGAGTAAGGATCAG
TATGTGAATCCCAACTCCAGACAACCTTGGTCAGGAAAAACCCTCAGAGCAAGAGATGAGTGAATCA
AACACCCTGAGACAATAAACAGATACGGAAGTTTAAATCCCTGGAGTCAACATCATCATCAGGAATAGG
CAGCTACAGTACACAGATGTCTGGCACTGATAATCCAGAACAATTTGAGGTCCTAAAGCAACAAAAAGAA
ATAATAGAACAAGGGATAGATTTATTTAAATAAGAAACCAAGAGAGGAATACAGTACCTCCAAGAACAAG
GGATGCTTGGCACCACACCTGAAGATATTGCCAATTCTTACATCAAGAGGAAAGATTAGACTCTACTCA
AGTGGGTGAGTTCCTGGGAGATAATGATAAATTTAACAAAGAAGTCATGTATGCATATGTGGACCAACAT
GACTTTTCAGGAAAAGACTTCGTTTCAGCCCTTCGTATGTTTCTAGAAGGATTTTCGTCTCCAGGGGAAG
CTCAGAAAATCGATCGATTAATGGAAAAATTTGCTGCAAGATACCTAGAATGCAACCAAGGACAACTCT
CTTTGCTAGTGGGATACAGCTTATGTTTTGGCTTATTCAATTATCATGTTGACCACAGACCTTCACAGT
CCACAGGTGAAAAATAAATGACAAAGGAACAATACATTAAGATGAATAGAGGTATCAATGACAGTAAAG
ACCTTCTGAAGAGTATCTATCAGCCATCTATAATGAAATAGCTGGGAAAAAGATATCAATGAAAGAAAC
AAAAGAACTAACAAATCCCTACAAAATCAAGTAAACAGAATGTAGCCAGTAAAAACAAAGAAGACTTCTG
TATAACTTAGAAATGGAGCAGATGGCCAAGACAGCTAAAGCACTCATGGAGGCCGTGAGCCATGTTCCAGG
CACCCCTTACAAGTGAACACATTTGGAGCATGTGAGGCCATGTTTAAAGTTGGCTTGGACGCCTTTTCT
GGCTGCATTAGTGTGGGCTACAAGATTGTGATGATACTGAAGTAGCCTCTCTTTCGCTGGAAGGTATA
AGATGTGCAATCAGAATTGCATGCATTTTCAGCATTAGCTGGAGAGAGATGCATATGTCAGGCCACTAG
CAAGATTTACCTTACTCACAGTGTGTTCCGGTATTACTGAAATGAAACAGAAGAACAATGACACAATAAA
AACACTTATCACAGTGGCTCATACAGATGGAAATTTATTTAGGAAATTCATGGCATGAGATTTCTGAAGTGC
ATCAGTCAAGTGGAGCTGGCACAGCTTATAGGAACTGGAGTGAACCTCGATACATTTCTGGAACAGTGC
GAGGCAGAGAAGGATCTTACTGGAACAAAAGATCAGGCTCCTGATGAATTTGTGGTTTAGGGCTAGT
TGGAGGAAATGTGGACTGGAACAGATAGCAAGTATTCAGGAATCCATTGGAGAAACCAGTTCTCAGAGT
GTTGTTGTTGCTGTAGATAGAATATTCACAGGATCTACAAGGCTAGATGGAAATGCCATTGTGGATTTTG
TCCGTTGGCTCTGTGCTGTCTATGGATGAATTTCTCCACGACACACCCAAGAATGTTTAGTCTACA
AAAAATAGTAGAAATATCATATTACAACATGGGAAGAATAAGATTACAGTGGTCTCGAATTTGGGAAGTT
ATTGGAGATCATTTTAAATAGGTTGGGTGTAATCCTAATGAAGATGTAGCTATTTTTGCAGTAGACTCCT
TGAGGCAGTTGTCAATGAAGTCTTAGAGAAAGGGGAGCTTGCTAACTTCAGATTCAGAAAGGATTTCTT
AAGACCTTTTGAACATATAATGAAACGGAACAGGTCTCCAACAATTCGAGATATGGTTGTACGGTGTATA
GCACAGATGGTTAATTCTCAAGCTGCTAACATTCGATCTGGATGGAAGAACAATTTTCTCTGTATTTTCATC
TAGCTGCATCTGATCAAGATGAAAGCATAGTGGAACTTGCAATTCCAAACAACCGGCACATTGTCACCCCT
TGATTTTGAACACACTTCCAGCGACCATTGATTTCTCCAGGATGCAGTGAAGTGTGTTGTCTGAATTT
GCGTGAATGCAGCTTCCAGACACAAGTATGGAAGCAATTCGACTTATTCGCCATTGTGCAAAAATATG
TGCTGATAGACCTCAGGCTTCAAGGAATACACAAGCGATGATGAACGTAGCACCTGAAGACAGGGT
GTGGGTGAGAGGATGGTCCCAATTTCTTTGAGTTATCCTGTATCATCAATAGATGCAAAATAGATGTA
AGAACCAGGGGTTTAAACAGTAATGTTTGAATAATGAAAACATATGGCCCACTTATGAGAAACACTGGT
GGCAGGATTTATTTAGAATTGTTTTCAGAATCTTTGACAATATGAAATGCCAGAACAACAGACAGAGAA
AGCTGAATGGATGACAACAACCTTGAATCATGCACTTTATGCAATCTGTGATGATTCACTCAGTATTTA
GAAGTACTCAGTGTACTTTTGGATGACATTTTGTCTCAGCTCTACTGGTGTGTGACAGCAAGACAATG
AGCAGTTAGCGCATCTGGTACAACTGTTTAGAGAATGTTGTTATTCTGAATGGTGAAAAATTTACCCCT
AGAAATCTGGGATAAACTTGAACCTGCACACTGGATATCTTCAAACCACAATCCACATGCGCTGTTG
ACCTGGCGACCAATTTGGAGAACTGCCCCACCTCCATCTCCTGTAAGTGAAGGCCATTGGATA
CAATATCACAGAAGTCTGTAGATATTCATGATTCTATTCAACCAAGGTCTGTGGATAACAGACCACAAGC
ACCACTGGTTTCTGCGTCTGCTGTTAATGAAGAAGTCAAGCAAAATTAATCTACAGCAAAATTTCCAGAA
CAAAAATGTTTGTGCTGCCTGTTGATTAATGTGTTGTGACAGCTGGAACCTCATCCAGACTATCGACAACA
TTGCTCTTCTCCAGCCACAAGTAAAGAAAGAAGATGCAGAAAACCTTAGCTGCAGCACAGAGAGATGCGGT
GGACTTTGATGTTGCGTTGATACTCAAGACCAAGGAATGACCGCTTTTAAACATCACACAACACTTTT
AAGCTACTGGACTGCTTATTAGAGTCACATAGATTTGCAAAAGCGTTTAAATCCAACAACGAACAGAGGA

CTGCCCTGTGAAAGCAGGATTCAAAGGCAAATCCAAGCCCAACCTTCTGAAGCAGGAGACCAGCAGCCT
 GCCTGTGGGCTGCGCATTCTCTCCGGATGTACATGGATGAGAGCCGCGTTAGTGCCTGGGAGGAGGTC
 CAGCAGAGGCTTTTGAATGTCTGCACTGAAGCACTAAGTTACTTCTCACTCTAACATCAGAAAGTCATC
 GAGAAGCCTGGACTAACTTACTGCTTTTGTCTTAACTAAAGTTCTAAAGATAAGTGATAATAGGTTTAA
 AGCTCATGCATCATTCTACTACCCTCTTATGTGAAATTATGCAATTTGACTTGATTCTGAACCTCGT
 GCTGTTCTTAGAAGATTTTTCTGCGAATCGGAGTAGTTTTTCAGATATCACACCACCTGAACAGGAAC
 TTGGAATAACAAGCAA

ACGCGTACGCGGCCGCTCGAG - GFP Tag - GTTTAA

Protein Sequence:

>RG222817 representing NM_006421
 Red=Cloning site Green=Tags(s)

MYEGKTKNMFLTRALEKILADKEVKKAHHSQLRKACEVALEEIKAEETEKQSPPHGEAKAGSSTLPPVKS
 KTNFIEADKYFLPFELACQSKCPRIVSTSLDCLQKLIAYGHLTGNAPDSTTPGKKLIDRIETICGCFQG
 PQTDEGVQLQIIKALLTAVTSQHIEIHEGTVLQAVRTCYNILASKNLIQTTAKATLTQMLNVIFARME
 NQALQEAKQMEKERHRQHHLQLQSPVSHHEPESPLRYLPPQTVDHISQEHEGLDLHTNDVDKSLQDDT
 EPENGSDISSAENEQTEADQATAAETLSKNEVLYDGENHDCEEKPDIVQNIVEEMVNIIVGDMGEGTTI
 NASADGNIPTIEDGSDSENIQANGIPGTPI SVAYTPSLPDDRLSVSSNDTQESGSSGSPGAKFSLILQ
 KDAFLVFRSLCKLSMKPLSDGPPDPKSHELRSKILSLQLLSILQNA GPIFRTNEMFINAIKQYLCVALS
 KNGVSSVPEVFELSLSIFLTL SNFKTHLMQIEVFFKEIFLYILETSTSSFDHKWMVIQTLTRICADAQ
 SVVDIYVNYDCDLNAANIFERLVNDLSKIAQGRGSQELGMSNVQELSLRKKGLECLVSILKCMVEWSKDQ
 YVNPNSQTTLGQEKPEQEMSEIKHPETINRYGSLNSLESTSSSGIGSYSTQMSGTDNPEQFEVLKQQKE
 IIEQGIDL FNKKPKRGIQYLQEQMLGTTPEIDIAQFLHQEERLDSTQVGEFLGDNDKFNKEVMAAYVDQH
 DFGSKDFVSALRMFLEGFRLPGEAQKIDRLMEKFAARYLECNQGQTLFASADTAYVLAYSIIMLTTDLHS
 PQVKNKMTKEQYIKMNRGINDSKDLPEEYLSAIYNEIAGKKISMKETKELTIPTKSSKQNVASEKQRLL
 YNLEMEQMAKTAKALMEAVSHVQAPFTSATHLEHVRPMPFLAWTPFLAAFVGLQDCDDTEVASLCEGI
 RCAIRIACIFSIQLERDAYVQALARFTLLTVSSGITEMKQKNIDTIKTLITVAHTDGNLGNWSWHEILKC
 ISQLELAQLIGTGVKPRYISGTVRGREGSLTGTKDQAPDEFVGLGLVGGNVWDWKIASIQESIGETSSQS
 VVVAVDRIFTGSTRLDGNAIVDFVWRWLCVSMDELLSTHPRMFLQKIVEISYNNMGRIRLQWSRIWEV
 IGDHFNKVGCPNEDVAIFAVDSLRLSMKFLEKELANFRFQKDFLRPFHEIMKRNRSPTIRDMVVRICI
 AQMVNSQAANIRSGWKNIFSVFHLAASDQDESIVELAFQTTGHIVTLVFEKHFPATIDSFQDAVKCLSEF
 ACNAAFPDTSMEDIAIRLIRHCAKYVSDRPQAFKEYTSDDMNVAPEDRVWVRGWFPILFELSCIIINRCKLDV
 RTRGLTVMFEIMKTYGHTYEKHWQDLFRIVFRIFDNMMLPEQQTEKAEWMTTTCNHALYICDVFYQYL
 EVLSDVLLDDIFAQLYWCVQQDNEQLARSGTNCLENVVILNGEKFTLEIWDKTCNCTLDIFKTTIPHALL
 TWRPNSETAPPPSPVSEKPLDTISQKSVDIHDSIQPRSVDNRPQAPLVSASAVNEEVSKIKSTAKFPE
 QKLFALLIKCVVQLELIQTIDNIVFPATSKKEDAENLAAAQRDAVDFDVRVDTQDQGMRYRFLTSQQLF
 KLLDCLLESHRFKAFNSNNEQRTALWKAGFKGKSKPNLLKQETSSLACGLRILFRMYMDESRSVAWEV
 QQRLLNVCSEALSYFLTLTSESHREAWTNLLLLFLTKVLKISDNRFKAHASFYPLLCIIMQFDLIPELR
 AVLRRFFLRIGVVFIQISQPPEQELGINKQ

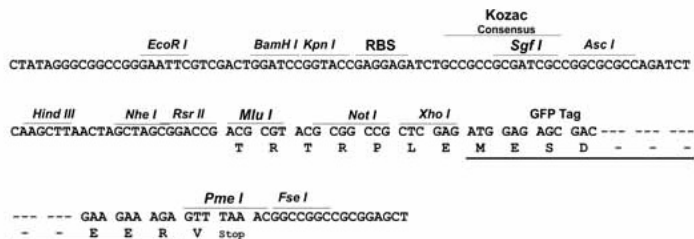
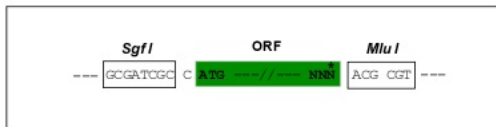
TRTRPLE - GFP Tag - V

Restriction Sites:

Sgfl-MluI

Cloning Scheme:

Cloning sites used for ORF Shuttling:



- ACCN:** NM_006421
- ORF Size:** 5547 bp
- OTI Disclaimer:** The molecular sequence of this clone aligns with the gene accession number as a point of reference only. However, individual transcript sequences of the same gene can differ through naturally occurring variations (e.g. polymorphisms), each with its own valid existence. This clone is substantially in agreement with the reference, but a complete review of all prevailing variants is recommended prior to use. [More info](#)
- OTI Annotation:** This clone was engineered to express the complete ORF with an expression tag. Expression varies depending on the nature of the gene.
- Components:** The ORF clone is ion-exchange column purified and shipped in a 2D barcoded Matrix tube containing 10ug of transfection-ready, dried plasmid DNA (reconstitute with 100 ul of water).

Reconstitution Method:

1. Centrifuge at 5,000xg for 5min.
2. Carefully open the tube and add 100ul of sterile water to dissolve the DNA.
3. Close the tube and incubate for 10 minutes at room temperature.
4. Briefly vortex the tube and then do a quick spin (less than 5000xg) to concentrate the liquid at the bottom.
5. Store the suspended plasmid at -20°C. The DNA is stable for at least one year from date of shipping when stored at -20°C.

RefSeq: [NM_006421.5](#)

RefSeq Size: 7212 bp

RefSeq ORF: 5550 bp

Locus ID: 10565

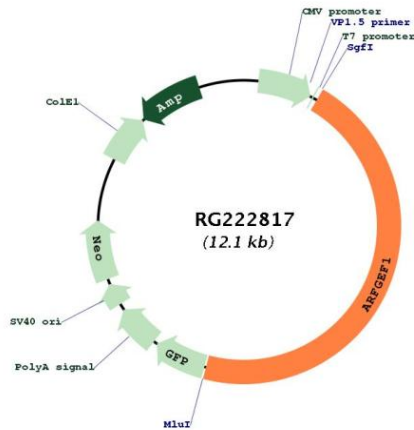
UniProt ID: [Q9Y6D6](#)

Cytogenetics: 8q13.2

Domains: Sec7

Gene Summary: ADP-ribosylation factors (ARFs) play an important role in intracellular vesicular trafficking. The protein encoded by this gene is involved in the activation of ARFs by accelerating replacement of bound GDP with GTP. It contains a Sec7 domain, which may be responsible for guanine-nucleotide exchange activity and also brefeldin A inhibition. [provided by RefSeq, Aug 2011]

Product images:



Circular map for RG222817