

Product datasheet for **RG222814**

ATP11B (NM_014616) Human Tagged ORF Clone

Product data:

Product Type:	Expression Plasmids
Product Name:	ATP11B (NM_014616) Human Tagged ORF Clone
Tag:	TurboGFP
Symbol:	ATP11B
Synonyms:	ATPIF; ATPIR
Mammalian Cell Selection:	Neomycin
Vector:	pCMV6-AC-GFP (PS100010)
E. coli Selection:	Ampicillin (100 ug/mL)
ORF Nucleotide Sequence:	>RG222814 representing NM_014616 Red=Cloning site Blue=ORF Green=Tags(s)

TTTTGTAATACGACTCACTATAGGGCGGCCGGAATTCGTCGACTGGATCCGGTACCGAGGAGATCTGCC
GCC**CGATCGCC**

ATGTGGCGCTGGATCCGGCAGCAGCTGGGTTTTGACCCACCACATCAGAGTGACACAAGAACCATCTACG
TAGCCAACAGGTTTCCTCAGAATGGCCTTTACACACCTCAGAAATTTATAGATAACAGGATCATTTCATC
TAAGTACACTGTGTGGAATTTTGTCCAAAAATTTATTTGAACAGTTCAGAAGAGTGGCAAACCTTTTAT
TTTCTTATTATTTTTGGTTCAGCTTATGATTGATACACCTACCAGTCCAGTTACCAGTGGACTCCAT
TATTCTTTGTGATAACAGTAAGTCCATAAAGCAGGGATATGAAGATTGGTTACGGCATAACTCAGATAA
TGAAGTAAATGGAGCTCCTGTTTATGTTGTTTGAAGTGGTGGCCTTGTAATAACTAGATCAAAAAACATT
CGGGTGGGTGATATTGTTTGAATAGCCAAAGATGAAATTTTTCTGCAGACTTGGTGCTTCTGTCCTCAG
ATCGACTGGATGGTTCCTGTCACGTTACAAGTGTAGTTTGGACGGAGAACTAAGTGAAGACACATGT
GGCAGTTCAGAAACAGCATTATTACAACAGTTGCCAATTTGGACACTCTAGTAGCTGTAATAGAATGC
CAGCAACCAGAAGCAGACTTATACAGATTCATGGGACGAATGATCATAACCCAACAAATGGAAGAAATG
TAAGACCTCTGGGGCCGGAGAGTCTCCTGCTTCGTGGAGCCAGATTAAAAACACAAAAGAAATTTTGG
TGTTGCGGTATACACTGGAATGGAACCTAAGATGGCATTAAATTAACAAGAGCAAAATCACAGAAACGATCT
GCAGTAGAAAAGTCAATGAATACATTTTTGATAATTTATCTAGTAATTTATATCTGAAGCTGTCATCA
GCACTATCTTGAAGTATACATGGCAAGCTGAAGAAAAATGGGATGAACCTTGGTATAACCAAAAAACAGA
ACATCAAGAAATAGCAGTAAGATTCTGAGATTTATTTAGACTTCCCTGCTTTTTTGGTCTCTACAAT
TTCATCATTCCAATTTTATTATGTGACAGTCGAAATGCAGAAATTTCTGGATCATTTTTTATTGGCT
GGGATCTTGATCTGTATCATGAAGAATCAGATCAGAAAGCTCAAGTCAATACTCCGATCTGAATGAAGA
GCTTGGACAGGTAGAGTACGTGTTTACAGATAAACTGGTACACTGACAGAAAATGAGATGCAGTTTCGG
GAATGTTCAATTAATGGCATGAAATACCAAGAAATTAATGGTAGACTGTACCCGAAGGACCAACACCAG
ACTCTTCAGAAGGAACTTATCTTATCTTAGTAGTTTATCCCATCTTAACAACCTTATCCCATCTTACAAC
CAGTTCCTCTTCAGAACCAGTCTGAAATGAACTGAACTAATTAAGAACATGATCTCTCTTTAAA



[View online »](#)

GCAGTCAGTCTCTGTCACACTGTACAGATTAGCAATGTTCAAACCTGACTGCACTGGTGATGGTCCCTGGC
AATCCAACCTGGCACCATCGCAGTTGGAGTACTATGCATCTTCACCAGATGAAAAGGCTCTAGTAGAAGC
TGCTGCAAGGATTGGTATTGTGTTTATTGGCAATTCTGAAGAACTATGGAGGTTAAAACCTTTGGAAAA
CTGGAACGGTACAAAAGCTTTCATATTCTGGAATTTGATTCAGATCGTAGGAGAAATGAGTGAATTTGTC
AGGCACCTTCAGGTGAGAAGTTATTATTTGCTAAAGGAGCTGAGTCATCAATTCTCCCTAAATGTATAGG
TGGAGAAAATAGAAAAACCAGAATTCATGTAGATGAATTTGCTTTGAAAGGGCTAAGAACCTGTGTATA
GCATATAGAAAATTTACATCAAAAAGAGTATGAGGAAATAGATAAACGCATATTTGAAGCCAGGACTGCCT
TGCAGCAGCGGGAAGAGAAATTGGCAGCTGTTTTCCAGTTCATAGAGAAAGACCTGATATTACTTGGAGC
CACAGCAGTAGAAGACAGACTACAAGATAAAGTTCGAGAAACTATTGAAGCATTGAGAATGGCTGGTATC
AAAGTATGGTACTTACTGGGGATAAACATGAAACAGCTGTTAGTGTGAGTTTATCATGTGGCCATTTTC
ATAGAACCATGAACATCCTTGAACCTATAAACAGAAATCAGACAGCGAGTGTGCTGAACAATTGAGGCA
GCTTGCCAGAAGAATTACAGAGGATCATGTGATTCAGCATGGGCTGGTAGTGGATGGGACCAGCCTATCT
CTTGCACTCAGGGAGCATGAAAACTATTTATGGAAGTTTGCAGAAATTTTCAGCTGTATTATGCTGTC
GTATGGCTCCACTGCAGAAAGCAAAAGTAATAAGACTAATAAAAAATACACCTGAGAAACCTATAACATT
GGCTGTTGGTGATGGTGCTAATGACGTAAGCATGATACAAGAAGCCCATGTTGGCATAGGAATCATGGGT
AAAGAAGGAAGACAGGCTGCAAGAAACAGTGACTATGCAATAGCCAGATTTAAGTTCCTCTCCAAATTGC
TTTTTGTTCATGGTCATTTTTATTATATTAGAATAGCTACCCTGTACAGTATTTTTTTTATAAGAATGT
GTGCTTTATCACACCCAGTTTTTATATCAGTTCTACTGTTTGTCTCAGCAAACATTGTATGACAGC
GTGTACCTGACTTTATACAATATTTGTTTTACTTCCCTACCTATTCTGATATATAGTCTTTTGGAACAGC
ATGTAGACCCTCATGTGTACAAAATAAGCCACCCTTATCGAGACATTAGTAAAAACCGCCTCTTAAG
TATTA AACATTTCTTTATTGGACCATCCTGGGCTTCAGTCATGCCTTTATTTCTTTTTTGGATCCTAT
TTACTAATAGGAAAGATACATCTCTGCTTGGAAATGGCCAGATGTTTGGAACTGGACATTTGGCACTT
TGGTCTTCACAGTCATGGTTATTACAGTCACAGTAAAGATGGCTCTGGAACCTATTTTTGGACTTGGAT
CAACCATCTCGTTACCTGGGGATCTATTATATTTTATTTTGTATTTTCTTGTTTTATGGAGGGATTCTC
TGGCCATTTTTGGGCTCCAGAATATGTATTTTGTGTTTATTCAGCTCCTGTCAAGTGGTTCTGCTTGGT
TTGCCATAATCCTCATGGTTGTTACATGTCTATTTCTTGATATCATAAAGAAGGTCTTTGACCGACACCT
CCACCCTACAAGTACTGAAAAGGCACAGCTTACTGAAACAAATGCAGGTATCAAGTGCTTGGACTCCATG
TGCTGTTTCCCGAAGGAGAAGCAGCGTGTGCATCTGTTGGAAGAATGCTGGAACGAGTTATAGGAAGAT
GTAGTCCAACCCACATCAGCAGATCATGGAGTGCATCGGATCCTTTCTATACCAACGACAGGAGCATCTT
GACTCTCTCCACAATGGACTCATCTACTTGT

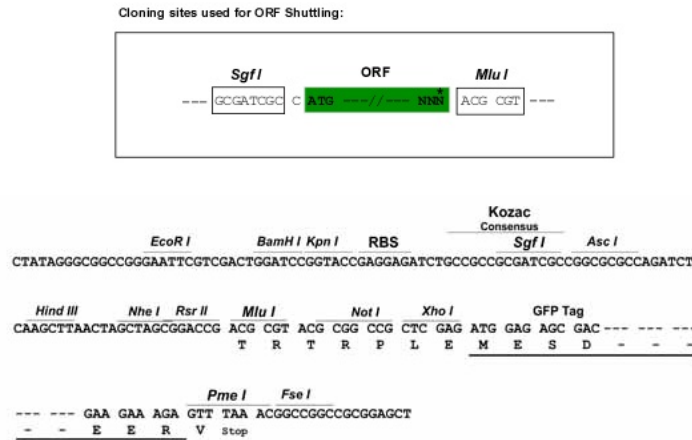
ACGCGTACGCGGCCGCTCGAG - GFP Tag - GTTTAA

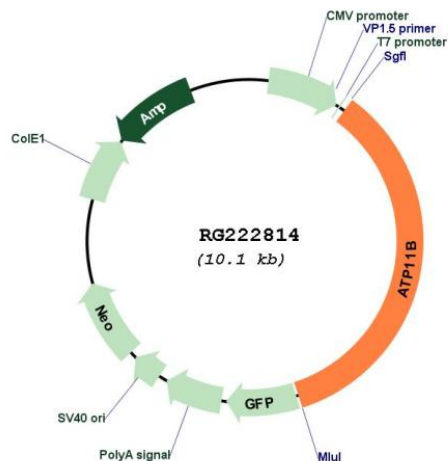
Protein Sequence: >RG222814 representing NM_014616
Red=Cloning site Green=Tags(s)

```
MWRWIRQQLGFDPHQSDTRTIYVANRFPQNGLYTPQKFIDNRIISSKYTVWNFVPKNLFQFRRVANFY
FLIIFLVQLMIDTPTSPVTSGLPLFFVITVTAIKQGYEDWLRHNSDNEVNGAPVYVVRSGGLVKTRSKNI
RVGDIVRIAKDEIFPADLVLLSSDRLDGSCHVTTASLDGETNLKTHVAVPETALLQTVANLDTLVAVIEC
QQPEADLYRFMGRMIITQQMEEIVRPLGPESLLLRGARLKNTKEIFGVAVYTGMEKMLNYSKSKQKRS
AVEKSMNTFLIIYLVILISEAVISTILKYTWQAEKWEDEPWYNQKTEHQRNSSKILRFISDFLAFVLVYN
FIIPISLYVTVMQKFLGSFFIGWDLDLYEESDQKAQVNTSDLNEELGQVEYVFTDKTGLTENEMQFR
ECSINGMKYQEINGRLVPEGPTPDSSEGNLSYSSLSHLNNLSHLTTSSSFRTSPENETELIKEHDLFFK
AVSLCHTVQISNVQTDCTGDGPWQSNLAPSQLEYASSPDEKALVEAAARIGIVFIGNSEETMEVKTGK
LERYKLLHILEFDSRRRMSVIVQAPSGEKLLFAKGAESSILPKCIGGEIEKTRIHVDEFALKGLRTLCCI
AYRKFTSKEYEEDKRIFEARTALQQREEKLAAVFQFIEKDLILLGATAVEDRLQDKVRETEALRMAGI
KVVWLTGDKHETAVSVSLSCGHFHRMNIELINQKSDSECAEQLRQLARRITEDHVIQHGLVVDGTSLS
LALREHEKLFMEVCRNCSAVLCCRMAPLQKAKVIRLIKISPEKPI TLAVGDGANDVSMIQEAHVIGIMG
KEGRQAARNSDYAIARFKFLSKLLFVHGHFYIRIATLVQYFFYKNCVFI TPQFLYQFYCLFSQQTYLDS
VYLTLYNICFTSLPILYSLLEQHVDPHVLQNKPTLYRDISKNRLLSIKTFLYWTILGFSHAFIFFFGSY
LLIGKDTSLGNGQMFGNWTFTLVFTVMVITVTVKMALETHFWTWINHLVTWGSIIIFYVFSLFYGGIL
WPFLGSQLMYFVFIQLSSGSAWFAIILMVVTCFLFDI IKKVFDRHLHPTSTEAQLTETNAGIKCLDSM
CCFPEGEAACASVGRMLERVIGRCSPTHISRSWSASDPFYTNDRSILTLSTMDSSTC
```

TRTRPLE - GFP Tag - V

Restriction Sites: SgfI-MluI
Cloning Scheme:



Plasmid Map:


ACCN: NM_014616

ORF Size: 3531 bp

OTI Disclaimer: The molecular sequence of this clone aligns with the gene accession number as a point of reference only. However, individual transcript sequences of the same gene can differ through naturally occurring variations (e.g. polymorphisms), each with its own valid existence. This clone is substantially in agreement with the reference, but a complete review of all prevailing variants is recommended prior to use. [More info](#)

OTI Annotation: This clone was engineered to express the complete ORF with an expression tag. Expression varies depending on the nature of the gene.

Components: The ORF clone is ion-exchange column purified and shipped in a 2D barcoded Matrix tube containing 10ug of transfection-ready, dried plasmid DNA (reconstitute with 100 ul of water).

Reconstitution Method:

1. Centrifuge at 5,000xg for 5min.
2. Carefully open the tube and add 100ul of sterile water to dissolve the DNA.
3. Close the tube and incubate for 10 minutes at room temperature.
4. Briefly vortex the tube and then do a quick spin (less than 5000xg) to concentrate the liquid at the bottom.
5. Store the suspended plasmid at -20°C. The DNA is stable for at least one year from date of shipping when stored at -20°C.

RefSeq: [NM_014616.3](#)

RefSeq Size: 7368 bp

RefSeq ORF: 3534 bp

Locus ID: 23200

UniProt ID: [Q9Y2G3](#)

Cytogenetics: 3q26.33

Protein Families: Transmembrane

Gene Summary: P-type ATPases, such as ATP11B, are phosphorylated in their intermediate state and drive uphill transport of ions across membranes. Several subfamilies of P-type ATPases have been identified. One subfamily transports heavy metal ions, such as Cu(2+) or Cd(2+). Another subfamily transports non-heavy metal ions, such as H(+), Na(+), K(+), or Ca(+). A third subfamily transports amphipaths, such as phosphatidylserine.[supplied by OMIM, Feb 2005]