

## Product datasheet for **RG222789**

### **DOCK8 (NM\_203447) Human Tagged ORF Clone**

#### Product data:

Product Type:	Expression Plasmids
Product Name:	DOCK8 (NM_203447) Human Tagged ORF Clone
Tag:	TurboGFP
Symbol:	DOCK8
Synonyms:	HEL-205; MRD2; ZIR8
Mammalian Cell Selection:	Neomycin
Vector:	pCMV6-AC-GFP (PS100010)
E. coli Selection:	Ampicillin (100 ug/mL)
ORF Nucleotide Sequence:	>RG222789 representing NM_203447 Red=Cloning site Blue=ORF Green=Tags(s)

TTTTGTAATACGACTCACTATAGGGCGCCGGGAATTCGTCGACTGGATCCGGTACCGAGGAGATCTGCC  
GCC**CGATCGCC**

ATGACACACCTGAACAGCCTGGATGTGCAGCTTGCCAGGAGCTCGGGACTTCACTGATGACGACTTGG  
ACGTGGTGTTCACGCCAAAGGAATGTAGGACTTTGCAGCCCTCTTTCGCGGAGGAAGGGTTGAAGTGA  
CCCTCATGTCCAGGACTGTGTTACAGACCTACATCCGTGAGTGGCTAATCGTGAACCGGAAAAACCAAGGA  
AGTCCAGAAATCTGTGGCTTTAAAAAGACTGGATCTCGAAAAGATTTTACAAGACGCTTCCGAAACAGA  
CGTTTGTGAGTCGGAACCTTGGAGTGCAGTGAACCCGCTGCTCAGGCAGGCCCCCGCCACTTAAACGTGCT  
GTGCGACGTGTCTGGAAAGGCCCGTCACTGCCTGTGACTTTGACCTCCGCAGCCTGCAGCCTGACAAG  
CGGCTAGAAAACCTCCTGCAGCAAGTGAAGTCCGAGGACTTTGAGAAGCAGAACGAGGAGGCCCGGAGGA  
CCAATAGGCAGGCCGAGCTCTTGGCCCTTACCCATCAGTGGACGAGGAGGATGTGTGGAAATACGTCC  
AGTACCAGAAATGTCCCAAGGAACACCTGGGCAACAGAATATTGGTCAAGTTGCTGACCTTGAAGTTGCGAG  
ATTGAAATTGAGCCCTGTTTGGCAGCATTGCCCTCTACGATGTTAAAGAAAGGAAAAAGATCTCAGAAA  
ATTTTCACTGTGACCTGAACTCTGACCAGTTCAAAGGATTTCTGCGAGCTCACACGCCTTCAAGTGGCCGC  
ATCAAGTCAGGCAGATCTGCAGTCTTCTCAGTCACTACCCGCTCCTCAGACATCTACCTGGTAGTCAAG  
ATTGAAAAGTCTGCAGCAGGAGAGATTGGAGACTGTGCAGAGCCCTACACGGTTATCAAAGAAAGT  
ATGGTGGAAAGAGTAAAGAAAAGATTGAAAACTAAAACTCCAAGCTGAATCCTTCTGCCAGCGTTTGGG  
GAAATACCGGATGCCCTTGGCTGGGCACCCATAAGCTTATCAAGCTTCTTCAATGTCTCCACCCTTGAG  
AGGGAGGTAAGTATGATGTGGACTCTGTGGTTGGGAGAAGCTCAGTGGTGAACGGAGGACATTGGCCCAAT  
CTAGAAGGCTTTCTGAAAGAGCCCTCTCCTTGGAGGAAAATGGGGTTGGATCCAACCTTCAAACCTCCAC  
TCTGAGCGTTAGCAGCTTTTCAAGCAGGAAGGAGATCGCCTTAGCGATGAAGACTTATTCAAGTTTTTA  
GCTGACTACAAAAGATCATCATCCTTACAGAGACGAGTCAAGTCAATTCCAGGCTTGCTAAGACTGGAGA  
TTTCTACAGCTCCAGAGATCATCAATTGCTGTCTGACTCCTGAAATGCTGCCCGTAAACCCCTTCTGTA  
AAACCGGACACGCCCGCACAAGAGATTTTGAATTTCCAACACGAGAAGTATATGTCCCTCACACTGTG



[View online »](#)

TACAGAAACCTTCTCTATGTCTACCCACAGAGGCTGAACTTTGTAACAAACTAGCATCAGCCCGGAACA  
 TTACAATAAAGATCCAGTTTATGTGTGGAGAAGATGCTAGCAATGCGATGCCGGTCATCTTTGGAAAATC  
 CAGCGGGCCTGAATTTCTGCAGGAAGTGTACACAGCTGTTACATACCATAATAAGTCTCCTGACTTTTAT  
 GAAGAAGTGAAAATTAAGCTCCCCGCTAAGCTCACAGTAAATCACCACCTCCTGTTACACCTTCTACCATA  
 TCAGCTGTCAGCAGAAGCAAGGAGCCTCCGTGGAACTCCTCGGGATATTCATGGCTGCCAATTCTCTT  
 AAATGAACGTCTTCAAAGTGGATCCTACTGTCTCCAGTTGCCTTGAAAAATTGCCACCAACTACTCC  
 ATGCAATCTGCTGAGAAAGTCCCATTACAGAATCCTCCATTAAAGTGGGCTGAAGGACATTAAGGGAGTAT  
 TTAATATTGAAGTGAAGCTGTTTCTTCTGTACACACCCAGGACAACCACCTGGAGAAGTTCTTACCCT  
 CTGCCACTCCCTGGAGAGCCAGGTGACCTTCCCCATCCGCGTGTGGATCAGAAAATCAGCGAGATGGCG  
 CTGGAGCATGAGCTGAAGCTCAGCATCATCTGCCTGAACTCCTCCCGCTGGAGCCGCTCGTGCTTTCC  
 TGCACCTGGTGTGGACAAGCTCTTCCAGCTGTCCGTGCAGCCATGGTCATCGTGCCAGACAGCCAA  
 CTTCTCCAGTTTGCCTTCGAGTCCGTGGTGGCCATCGCAACAGTCTGCACAACAGCAAGGACCTGAGC  
 AAGACCAGCATGGGAGGAACTGCCTGTGGCTTCTACGTGACTACGTCTTCCGCTGCCAGAGGTGC  
 AAAGGGATGTGCCAAGTCAGGCGCTCCACTGCCCTCTAGACCCTCGGAGCTACCACAGTATGGCCG  
 CACATCAGCTGCTGTGAGTTCAAAGCTGCTGCAGGCCGGGTGATGAGCAGCAGTAACCAGACCTC  
 GCGGGGACACACTCCGCAGCAGAGGAAAGTGAAGAATCATGTCTTCAAAGATCGCCGATCGCAACT  
 GCAGCCGAATGTCTTACTATTGCTCTGGCAGTAGTGATGCTCAAAGTTCACCTGCAGCCCAAGGCCAGC  
 CAGCAAAAAGCATTTCCATGAGGAGCTTGCCTTCAGATGGTGGTGCAGCACCGGAATGGTGAAGAAA  
 GTCTTCAAAGTATGCCTGGTTCTTCTTGGAGCTTGGTGAAGCATGGCCAGCACGTACATAACATGG  
 ACAAACGGGACAGTTTTTCGGAGGACTCGTTTTCTGACCGTTTTCATGGATGACATAACTACTATTGTTAA  
 TGTGGTCACTCGGAAATTCAGCCCTTTAGTAAAACACAGAAGGAAAATGAACAGGCCGAAAAGATG  
 AACATCAGCCTGGCTTTCTTCTGTATGACCTTCTCCTCATGGATCGGGCTTTGTGTTAACCTCA  
 TCAGACATTAATTCAGCCAGCTGTGAGCAAGCTCAGTAACTTCCAACGCTCATTTCATGAGCTAGA  
 GTTCTGTAGAATCCTCTGTAGCCATGAGCATTACCTCAATCTGAACCTTTTTTTTGAATGCTGATACT  
 GCTCCAACATCTCCTTGTCTTCCATATCTTCCAGAACTCAAGCTCCTGCTCCAGCTTCCAGGACCAGA  
 AGATCGCCAGCATGTTGATCTGACTTCCGAGTACCGCCAGCAGCACTTCTCACCGGGCTCCTCTTCC  
 AGAACTGGCTGTGCCCTGGATGCCAAGGGGAAGGAATCAGCAAAGTACAAAGGAAAGCTGTGAGTGCA  
 ATTCACAGCCTGCTAAGTTCTCACGACCTGGACCCAGCTGTGTCAAACCAGAGGTGAAGGTCAAATCG  
 CCGCCCTTACCTACCTTGTGTCATCTTTGGATGCTTGGCCAGCTCTGTGACTTTACAGTTGC  
 AGATACTCGCAGATACCGCACCAGTGGCTCGGATGAAGAAACAAGGAGCCGGTCCATTAACCAGAA  
 GTGGCTCTGGCCATAGCAGGGAATAATTTCAATTTGAAAACAAGTGAATAGTGTGCTTCTTCCCTGCCT  
 ATAAGCAGTACAACATGCTGAACCGGACACTACTCGAACCTCATGATCTGCTTCTCTGGATCATGAA  
 AAATGCTGATCAGAGCCTCATTAGGAAGTGGATTGCTGACCTGCCATCAACGCAGCTCAACAGGATTTTA  
 GATCTACTTTTCTGTGTGTTATGTTTTGAGTATAAGGGAAAACAGAGTTCTGACAAAGTCAAGTACCC  
 AAGTCTCGCAGAAGTCAAGGGATGTCAAGGCCGGCTGGAAGAGGCTTTGCTCCGTGGGGAAGGGCCAG  
 AGGGGAGATGATGCGCCCGGGCTCCAGGGAACGACCGATTCCAGGCCAAATGAAAATTTGAGATGG  
 AAGAAAGAGCAGACATTTGGCGCAAGCTAATGAGAAGCTAGATAAAACAAGGCCGAGTTAGATCAAG  
 AAGCCTTGATCAGTGGCAATCTGGCTACAGAAGCACATTTAATCATCCTGGATATGCAGGAAAACATTAT  
 CCAGGCAGCTCGGCTCTGGACTGTAAGACAGCCTGCTGGGAGGTGTTCTGAGGGTGTGGTGAATTTCT  
 CTGAACCTGTGATCAGAGTACCACCTACCTGACTACTGCTTTGCAACACTCCGTGCTCTCATCGCCAAGT  
 TTGGAGACTTACTCTTGAAGAGGAGGTGGAACAGTGTTCGACCTATGTACCAAGTCTGCACCACTG  
 CAGCAGCAGCATGGATGTACCCGGAGCCAAGCCTGTGCCACCCTTTACCTCCTCATGAGTTTCAAGTTT  
 GGAGCCACCAGTAATTTTGAAGAGTAAAGATGCAAGTAAACATGTCCCTGGCATCTTTGGTGGGAAGAG  
 CACCAGACTTTAATGAAGAGCACCTGAGAAGATCCTTGAGGACAATTTGGCCTATTGAGAAGAGGACAC  
 AGCCATGCAGATGACTCCTTTCCACCCAGGTGGAGGAACTTCTCTGTAATCTGAATAGCATCTTATAT  
 GACACAGTGAAAATGAGGGAATTCAGGAAGATCCTGAGATGCTTATGGATCTCATGTACAGAATTGCCA  
 AGATTACCAGGCATCTCCTGATCTGCGGTGACCTGGCTCCAGAACATGGCAGAGAAAACACACCAAGAA  
 GAAGTGTACACGGAGGCTGCCATGTGCCTGGTGCACGCCGCTGCGTTAGTGGCTGAGTATCTGAGCATG  
 CTGGAGGACCACAGCTACCTGCCGTGGCAGTGTGAGCTTCCAGAATATTTCTTCCAATGTGCTGGAGG  
 AGTCTGTGGTCTCTGAGGACACCCTGTACCTGACGAGGATGGGGTGTGCGCAGGCCAGTACTTACCGA  
 GAGTGGCTGGTAGGCCTCCTGGAGCAGGCCGGGAGCTTTCAGCACGGGAGGCTTATATGAGACAGTT  
 AATGAGGTCTACAAGCTGGTCATCCCCATCTAGAAGCGCATCGAGAATTCGGGAAGCTGACACTCACTC

ACAGCAAGCTGCAGAGAGCCTTCGACAGCATCGTTAAACAAGGATCATAAGAGAATGTTTGGAACTACTT  
 CCGAGTTGGTTTCTTTGGATCCAAATTTGGGGATTTGGATGAACAGGAGTTTGTCTACAAAGAGCCTGCA  
 ATTACCAAGCTTCTGAGATCTCACATAGACTAGAGGCATTTTATGGTCAATGTTTGGTGCAGAAATTTG  
 TGGAAAGTATTAAGACTCCACTCCTGTGGACAAAACCAAGTTGGATCCTAACAGGCCTACATACAGAT  
 CACTTTTGTGGAGCCCTACTTTGATGAGTATGAGATGAAAGACAGGGTACATACTTTGAGAAGAATTTCC  
 AACCTCCGGAGGTTTATGTACACCACCCCGTTACCCTGGAGGGGCGCCCTCGGGGAGAGCTGCATGAGC  
 AGTACAGAAGGAACACAGTCTGACCACTATGCACGCCTCCCTACATCAAGACCAGGATCAGCGTCAT  
 CCAGAAGGAGGATTTGTTTGGACACCGATTGAAGTTGCCATTGAAGACATGAAGAAGAAGACCCTGCAG  
 TTAGCAGTTGCCATTAACCAGGAGCCGCTGATGCAAAGATGCTTCAGATGGTGTGCAAGGCTCTGTGG  
 GAGCTACTGTAATCAGGGACCACTGGAAGTAGCCCAAGTGTTTTGGCTGAAATTCCTGCTGATCCAAA  
 ACTCTATCGACATCACAACAAGTTGAGGTTATGCTTTAAGGAATTCATCATGAGATGTGGTGAAGCTGTA  
 GAGAAAAACAAGCGTCTCATCACGGCAGACCAGAGGGAATATCAGCAGGAACTCAAAAAGAACTATAACA  
 AGCTAAAAGAGAACCCTCAGGCCAATGATCGAGCGGAAAATCCAGAAGTGTACAAGCCAATATTCAGAGT  
 TGAGAGTCAAAAGAGGGACTCCTCCACAGATCTAGTTTCAGGAAATGTGAAACCCAGTTGTCACAGGGC  
 AGC

ACGCGTACGCGGCCGCTCGAG – GFP Tag – GTTTAA

**Protein Sequence:**

>RG222789 representing NM\_203447  
 Red=Cloning site Green=Tags(s)

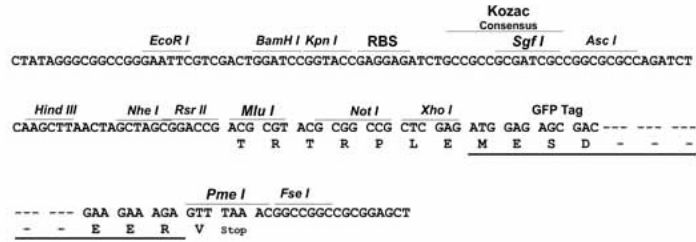
MTHLNSLDVQLAQELGDFDDELDVVFTPKECRTLQPSLPEEGVELDPHVRDCVQTYIREWLIVNRKNQG  
 SPEICGFKKTSRKDFHKTLPKQTFESETLECSEPAQAQPRHLNVLCDVSGKGPVTACDFDLRSLQDPDK  
 RLENLLQQVSAEDFEKQNEEARTRNRQAEFALYPSVDEEDAVEIRPVPECPKEHLGNRILVKLLTLKFE  
 IEIEPLFASIALYDVKERKKISENFHCDLNSDQFKGFLRAHTPSVAASSQARSASFVSVTPSSDIYLVVK  
 IEKVLQQGEIGDCAEPYTVIKESDGGKSKEKIEKLLQAESFCQRLGKYRMPFAWAPISLSSFFNVSTLE  
 REVTDVDSVVGRRSSVGERRTLAQSRRLSERALSLEENGVGSNFKTSTLSVSSFFKQEGDRLSDEDLFKFL  
 ADYKRSSSLQRRVKSIPGLLRLEISTAPEIINCLTPEMLPVKPPENRTRPHKEILEFPTREVYVPHTV  
 YRNLLYVYPQRLNFVNKLASARNITIKIQFMCGEDASNAMPVIFGKSSGPEFLQEVYTAVTYHNKSPDFY  
 EEVKIKLPAKLTVNHHLLFTFYHISCCQKQGASVETLLGYSWLPILLNERLQTSYCLPVALEKLPNYS  
 MHSAEKVPLQNPPIKWAEHGKGVFNIEVQAVSSVHTQDNHLEKFFTLCHSLESQVTFPIRVLDQKISEMA  
 LEHELKLSIICLNSSRLEPLVLFHLVLDKLFQLSVQPMVIAGQTANFSQFAFESVVAIANSLHNSKDL  
 KDQHGRNCLLASVYHYVFRLEPEVQRDVPKSGAPTALLDPRSYHTYGRTSAAAVSSKLLQARVMSSNPDL  
 AGTHSAADEEVKNIMSSKIADRNCRMSYCSGSSDAPSSPAAPRPASKKHFEELALQMVVSTGMVRET  
 VFKYAWFFELLVKSMAQHVNMDKRDSTRFRTRSDRFMDITTVNVTSEIAALLVKPQKENEQAEKM  
 NISLAFFLYDLLSLMDRGFVFNLRHYCSQLSAKLSNLPTLISMRLEFLRILCSHEHYLNLNLFMMNADT  
 APTSPCPSISSQSSSCSFQDQKIASMFDLTSEYRQQHFLTGLLFTELAAALDAEGEGISKVQRKAVSA  
 IHSLLSSHDLDRPCVKPEVKVIAALYLPLVGIILDALPQLCDFTVADTRRYRTSGSDEEQEGAGAINQN  
 VALAIAGNNFNKTSGLVLSLSPYKQYNMLNADTTRNLMICFLWIMKNADQSLIRKWIADLPSTQLNRIL  
 DLLFICVLCFEYKQSSDKVSTQVLQKSRDVKARLEEALLRGEGARGEMMRRRPAAGNDRFPGLNENLRW  
 KKEQTHWRQANEKLDKTKAELDQEAISGNLATEAHLIILDMQENIIQASSALDCKDSSLGGVLRVLVNS  
 LNCDQSTTYLTHCFATLRALIAKFGDLLFEEVEQCFDLCHQVLHHCSSSMVTRSQACATLYLLMRFSS  
 GATSNFARVKMQVTMSLASLVGRAPDFNEHLRRLRILAYSEEDTAMQMPFPPTQVEELLCNLSILY  
 DTVKMRQFQEDPEMLMDLRYRIAKSYQASPDRLRLTWLQNMAREKHTKKKCYTEAMCLVHAALVAEYLSM  
 LEDHSYLPVGSVSFQNISSNVLEESVVSSEDLSPEDEGVCAGQYFTESGLVGLLEQAAELFSTGGLYETV  
 NEVYKLVIPILEAHREFRKLTLTHSKLQRAFDSIVNKDHRMFGTYFRVGFVGGSKFGDLDEQEFVYKEPA  
 ITKLEISHRLEAFYGCFCGAEFVEVIKIDSTPVDKTKLDPNKAYIQITFVEPYFDEYEMKDRVTFEKNF  
 NLRRFMYTTPFTLEGRPRGELHEQYRRNTVLTMMHAFPIKTRISVIQKEEFVLTPIEVATEDMKKKTQ  
 LAVAINQEPDAKMLQMVLQGSVGTAVNQGPLEVAQVFLAEIPADPKLYRHHNKLRLCFKEFIMRCGEAV  
 EKNKRLITADQREYQELKKNYNKLNENLRPMIERKIPELYKPIFRVESQKRDSEFRSSFRKQVLSQGS  
 S

TRTRPLE – GFP Tag – V

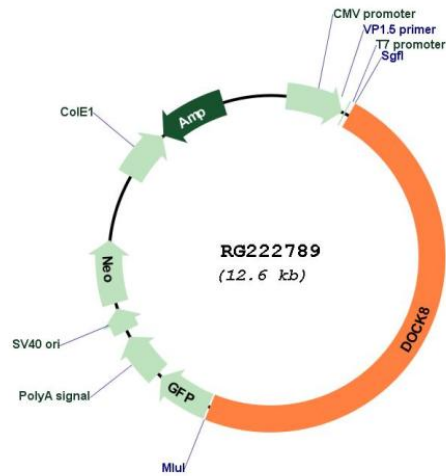
Restriction Sites: SgfI-MluI

**Cloning Scheme:**

Cloning sites used for ORF Shuttling:



**Plasmid Map:**



ACCN: NM\_203447  
ORF Size: 6093 bp

<b>OTI Disclaimer:</b>	<p>Due to the inherent nature of this plasmid, standard methods to replicate additional amounts of DNA in E. coli are highly likely to result in mutations and/or rearrangements. Therefore, OriGene does not guarantee the capability to replicate this plasmid DNA. Additional amounts of DNA can be purchased from OriGene with batch-specific, full-sequence verification at a reduced cost. Please contact our customer care team at <a href="mailto:custsupport@origene.com">custsupport@origene.com</a> or by calling 301.340.3188 option 3 for pricing and delivery.</p> <p>The molecular sequence of this clone aligns with the gene accession number as a point of reference only. However, individual transcript sequences of the same gene can differ through naturally occurring variations (e.g. polymorphisms), each with its own valid existence. This clone is substantially in agreement with the reference, but a complete review of all prevailing variants is recommended prior to use. <a href="#">More info</a></p>
<b>OTI Annotation:</b>	<p>This clone was engineered to express the complete ORF with an expression tag. Expression varies depending on the nature of the gene.</p>
<b>Components:</b>	<p>The ORF clone is ion-exchange column purified and shipped in a 2D barcoded Matrix tube containing 10ug of transfection-ready, dried plasmid DNA (reconstitute with 100 ul of water).</p>
<b>Reconstitution Method:</b>	<ol style="list-style-type: none"><li>1. Centrifuge at 5,000xg for 5min.</li><li>2. Carefully open the tube and add 100ul of sterile water to dissolve the DNA.</li><li>3. Close the tube and incubate for 10 minutes at room temperature.</li><li>4. Briefly vortex the tube and then do a quick spin (less than 5000xg) to concentrate the liquid at the bottom.</li><li>5. Store the suspended plasmid at -20°C. The DNA is stable for at least one year from date of shipping when stored at -20°C.</li></ol>
<b>RefSeq:</b>	<p><a href="#">NM_203447.1</a>, <a href="#">NP_982272.1</a></p>
<b>RefSeq Size:</b>	<p>7257 bp</p>
<b>RefSeq ORF:</b>	<p>6300 bp</p>
<b>Locus ID:</b>	<p>81704</p>
<b>UniProt ID:</b>	<p><a href="#">Q8NF50</a></p>
<b>Cytogenetics:</b>	<p>9p24.3</p>
<b>Gene Summary:</b>	<p>This gene encodes a member of the DOCK180 family of guanine nucleotide exchange factors. Guanine nucleotide exchange factors interact with Rho GTPases and are components of intracellular signaling networks. Mutations in this gene result in the autosomal recessive form of the hyper-IgE syndrome. Alternatively spliced transcript variants encoding different isoforms have been described.[provided by RefSeq, Jun 2010]</p>