

## Product datasheet for **RG222771**

### CTNND1 (NM\_001085458) Human Tagged ORF Clone

#### Product data:

Product Type:	Expression Plasmids
Product Name:	CTNND1 (NM_001085458) Human Tagged ORF Clone
Tag:	TurboGFP
Symbol:	CTNND1
Synonyms:	BCDS2; CAS; CTNND; p120; p120(CAS); p120(CTN); P120CAS; P120CTN
Mammalian Cell Selection:	Neomycin
Vector:	pCMV6-AC-GFP (PS100010)
E. coli Selection:	Ampicillin (100 ug/mL)



[View online »](#)

**ORF Nucleotide Sequence:**

>RG222771 representing NM\_001085458  
 Red=Cloning site Blue=ORF Green=Tags(s)

TTTTGTAATACGACTCACTATAGGGCGGCCGGGAATTCGTCGACTGGATCCGGTACCGAGGAGATCTGCC  
 GCC**CGGATCGCC**

ATGGACGACTCAGAGGTGGAGTCGACCGCCAGCATCTTGGCCTCTGTGAAGGAACAAGAGGCCAGTTTG  
 AGAAGCTGACCCGGGCGCTGGAGGAGGAACGGCGCCACGTCTCGGCGCAGCTGGAACGCGTCCGGGTCTC  
 ACCACAAGATGCCAACCCACTCATGGCCAACGGCACACTACCCGCCGGCATCAGAACGGCCGGTTTGTG  
 GGCGATGCTGACCTTGAAGACAGAAATTTTCAGATTTGAAACTCAACGGACCCAGGATCACAGTCACC  
 TTCTATATAGCACCATCCCAGGATGCAGGAGCCGGGCGAGATTGTGGAGACCTACACGGAGGAGGATCC  
 TGAGGGAGCCATGTCTGTAGTCTCTGTGGAGACCTCAGATGATGGGACCACTCGGCGCACAGAGACCACG  
 GTCAAGAAAGTAGTGAAGACTGTGACAACCGGACAGTACAGCCAGTCGATATGGGACCAGACGGGTTGC  
 CTGTGGATGCTTCATCAGTTTCTAACAACTATATCCAGACTTTGGGTCGTGATTTCCGCAAGAATGGCAA  
 TGGGGGACCTGGTCCCTATGTGGGGCAAGCTGGCACTGCTACCCTTCTAGGAACCTCCACTACCCTCCT  
 GATGGTTATAGTCGCCACTATGAAGATGGTTATCCAGGTGGCAGTGATAACTATGGCAGTCTGTCCCGGG  
 TGACCCGCATTGAGGAGCGGTATAGGCCAGCATGGAAGGCTACCGGGCACCTAGTAGACAGGATGTGTA  
 TGGGCCCCAACCCAGGTTCCGGTAGGTGGGAGCAGCGTGGATCTGCATCGCTTTCATCCAGAGCCTTAT  
 GGGCTAGAGGATGACCAGCGTAGTATGGGCTATGATGACCTGGATTATGGTATGATGTCTGATTATGGCA  
 CTGCCCGTCGGACTGGGACACCCCTCGACCCTCGTCGGCGCCTCAGGAGCTATGAAGACATGATTGGTGA  
 GGAGGTGCCATCGGATCAATACTACTGGGCTCCTTTGGCCAGCATGAGCGAGGAAGTTTAGCAAGCTTG  
 GATAGCTGCGCAAAGGAGGGCCTCCACCTCCTAATTGGAGACAGCCAGAGCTGCCAGAGGTGATCGCCA  
 TGCTTGGATTCCGCTTGGATGCTGTCAAGTCCAATGCAGCTGCATACCTGCAACACTTATGCTACCGCAA  
 TGACAAGGTGAAGACTGACGTGCGGAAGCTCAAGGGCATCCAGTACTGGTGGGATTGTTAGACCATCCC  
 AAAAAGGAAGTGCACCTTGGAGCCTGTGGAGCTCTCAAGAATATCTCTTTTGGACGTGACCAGGATAACA  
 AGATTGCCATAAAAACTGTGATGGTGTGCCTGCCCTTGTGCGATTGCTTCGAAAGGCTCGTGATATGGA  
 CCTTACTGAAGTTATTACCGGAACCCTGTGGAATCTTTCATCCCATGACTCAATCAAAATGGAGATTGTG  
 GACCATGCACTGCATGCCTTACAGATGAAGTGATCATTCTCATTCTGGTTGGGAGCGGGAACCTAATG  
 AAGACTGTAAGCCACGCCATATTGAGTGGGAATCGGTGCTACCAACACAGCTGGCTGCCTTAGGAATGT  
 AAGCTCAGAGAGGAGTGAAGCTCGCCGGAACCTCGGGAATGTGATGGTTTAGTTGATGCCCTCATTTTC  
 ATTTGTTACAGGCTGAGATTGGGCAGAAGGATTACAGACAGCAAGCTTGTAGAGAAGTGTGTTTGCCTTCTTC  
 GGAACCTATCATCAAGTTACCGGGAGATCCCACAGGCAGAGCGTTACCAAGAGGCAGCTCCCAATGT  
 TGCCAACAATACTGGGCCACATGCTGCCAGTTGCTTTGGGGCCAAGAAGGGCAAAGATGAGTGGTTCTCC  
 AGAGGGAAAAAACCCTATAGAGGATCCAGCAAACGATACAGTGGATTTCCCTAAAAGAACGAGTCCAGCTC  
 GAGGCTATGAGCTCTTATTTACAGCCAGAGGTGGTTCGGATATACATCTCACTTCTTAAGGAGAGCAAGAC  
 TCCTGCCATCCTAGAAGCCTCAGCTGGAGCTATCCAGAAGTGTGTGCTGGGCGCTGGACGTATGGTCGA  
 TACATCCGCTCTGCTCTGCGTCAAGAGAAGGCTCTTTCTGCCATAGCTGACCTCCTGACTAATGAACATG  
 AACGGGTGGTGAAGCTGCATCTGGAGCACTGAGAAACCTGGCTGTGGATGCTCGCAACAAGAATTAAT  
 TGGTAAACATGCTATTCCTAAGTGGTAAAGAATCTGCCAGGAGGACAGCAGAAGTCTCTTGGAAATTC  
 TCTGAGGACACTGTCATCTCTATTTTGAACACTATCAACGAGGTTATCGCTGAGAAGTGGAGGCTGCCA  
 AAAAGCTTCGAGAGACACAGGATTGAGAAGCTGGTGTGATCAACAAATCAGGGAACCCCTCAGAAAA  
 AGAAGTTCGAGCAGCAGCACTTGTATTACAGACAATCTGGGGATATAAGGAACTGCGGAAGCCACTGGAA  
 AAAGAAGGATGGAAGAAATCAGACTTTCAGGTGAATCTAAACAATGCTTCCCGAAGCCAGAGCAGTCATT  
 CATATGATGATAGTACTCTCCCTCATTGACCGGAACCAAAAATCAGATAAGAAACCTGATCGGGAAGA  
 AATTCAGATGAGCAATATGGGATCAAACACAAAATCACTAGATAACAATATTCCACACCAAAATGAGAGA  
 GGAGACCACAATAGAACACTGGATCGATCGGGGATCTAGGCGACATGGAGCCATTGAAGGGAACAACAC  
 CCTTGATGCAGGACGAGGGGAGGAATCTCTGGAGGAAGAGTTGGATGTGTTGGTTTTGGATGATGAGGG  
 GGCCAAGTGTCTTACCCTCCATGCAGAAGATT

AG**CGGACCG**ACGCGTACGCGGCCGCTCGAG - GFP Tag - GTTTAA

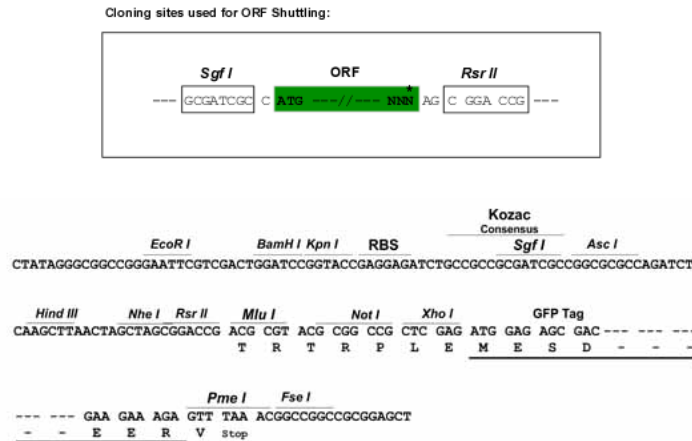
**Protein Sequence:** >RG222771 representing NM\_001085458  
Red=Cloning site Green=Tags(s)

MDDSEVESTASILASVKEQEAQFEKLTRALEEERRHVSAQLERVRVSPQDANPLMANGTLTRRHQNGRFV  
 GDADLERQKFSCLKLNGPQDHSLLYSTIPRMQEPGQIVETYTEDPEGAMSVSVETSDDGTRRTETT  
 VKKVVKTVTTRTVQPVAMGPDGLPVDASSVSNNYIQTGRDFRKNNGGPGPYVVGQAGTATLPRNFHYPP  
 DGYSRHYEDGYPGGSDNYGSLSRVTRIEERYRPSMEGYRAPSRQDVYGPQPVVRVGGSSVDLHRFHPEPY  
 GLEDDQRSMGYDDL DYGMMSDYGTARRTGTPSDPRRRLRSYEDMIGEEVPSDQYYWAPLAQHERGSLASL  
 DSLRKGKGGPPPNWRQPELPEVIAMLGFRLLDAVKSNAAAYLQHLCYRNDKVKT DVRKLGIPVLVGLLDHP  
 KKEVHLGACGALKNISFGRDQDNKIAIKNCDGVPALVRLLRKARDMDL TEVITGTLWNLSSHDSIKMEIV  
 DHALHAL TDEVIIPHSGWEREPNEDCKPRHIEWESVL TNTAGCLRNVSSEARREARRKRECDGLVDALIF  
 IVQAEIGQKDSKSLVENCVCLLRNLSYQVHREIPQAERYQEAAPNVANNTGPHAASCFGAKKKGDEWFS  
 RGKKPIEDPANDTVDFPKRTSPARGYELLFQPEVVRIYISLLKESKTPAILEASAGAIQNL CAGRWTYGR  
 YIRSALRQEKALSAIADLLTNEHERVVKASGALRNLAVDARNKELIGKHAIPNLVKNLPGGQQNSSWNF  
 SEDTVISILNTINEVIAENLEAAKKLRETQIEKLV L INKSGNRSEKEVRAAALVLQTIWGYKELRKPLE  
 KEGWKKSDFQVNLNNASRSQSSHSYDDSTLPLIDRNQKSDKKPDREEIQMSNMGMSNTKSLDNNYSTPNER  
 GDHNRTLDRSGDLGDMPELKGTTPLMQDEGQESLEEEELDVLVLDDEGGQVSYPMSQKI

SGPTRRRLE - GFP Tag - V

**Restriction Sites:** SgfI-RsrII

**Cloning Scheme:**

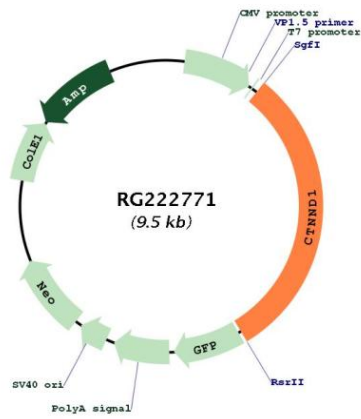


**ACCN:** NM\_001085458

**ORF Size:** 2904 bp

<b>OTI Disclaimer:</b>	Due to the inherent nature of this plasmid, standard methods to replicate additional amounts of DNA in E. coli are highly likely to result in mutations and/or rearrangements. Therefore, OriGene does not guarantee the capability to replicate this plasmid DNA. Additional amounts of DNA can be purchased from OriGene with batch-specific, full-sequence verification at a reduced cost. Please contact our customer care team at <a href="mailto:custsupport@origene.com">custsupport@origene.com</a> or by calling 301.340.3188 option 3 for pricing and delivery.
	The molecular sequence of this clone aligns with the gene accession number as a point of reference only. However, individual transcript sequences of the same gene can differ through naturally occurring variations (e.g. polymorphisms), each with its own valid existence. This clone is substantially in agreement with the reference, but a complete review of all prevailing variants is recommended prior to use. <a href="#">More info</a>
<b>OTI Annotation:</b>	This clone was engineered to express the complete ORF with an expression tag. Expression varies depending on the nature of the gene.
<b>Components:</b>	The ORF clone is ion-exchange column purified and shipped in a 2D barcoded Matrix tube containing 10ug of transfection-ready, dried plasmid DNA (reconstitute with 100 ul of water).
<b>Reconstitution Method:</b>	<ol style="list-style-type: none"> <li>1. Centrifuge at 5,000xg for 5min.</li> <li>2. Carefully open the tube and add 100ul of sterile water to dissolve the DNA.</li> <li>3. Close the tube and incubate for 10 minutes at room temperature.</li> <li>4. Briefly vortex the tube and then do a quick spin (less than 5000xg) to concentrate the liquid at the bottom.</li> <li>5. Store the suspended plasmid at -20°C. The DNA is stable for at least one year from date of shipping when stored at -20°C.</li> </ol>
<b>RefSeq:</b>	<a href="#">NM_001085458.1</a> , <a href="#">NP_001078927.1</a>
<b>RefSeq Size:</b>	6363 bp
<b>RefSeq ORF:</b>	2907 bp
<b>Locus ID:</b>	1500
<b>UniProt ID:</b>	<a href="#">O60716</a>
<b>Cytogenetics:</b>	11q12.1
<b>Protein Families:</b>	Druggable Genome
<b>Protein Pathways:</b>	Adherens junction, Leukocyte transendothelial migration
<b>Gene Summary:</b>	This gene encodes a member of the Armadillo protein family, which function in adhesion between cells and signal transduction. Multiple translation initiation codons and alternative splicing result in many different isoforms being translated. Not all of the full-length natures of the described transcript variants have been determined. Read-through transcription also exists between this gene and the neighboring upstream thioredoxin-related transmembrane protein 2 (TMX2) gene. [provided by RefSeq, Dec 2010]

Product images:



Circular map for RG222771