

Product datasheet for **RG222767**

MCK10 (DDR1) (NM_013993) Human Tagged ORF Clone

Product data:

Product Type:	Expression Plasmids
Product Name:	MCK10 (DDR1) (NM_013993) Human Tagged ORF Clone
Tag:	TurboGFP
Symbol:	DDR1
Synonyms:	CAK; CD167; DDR; EDDR1; HGK2; MCK10; NEP; NTRK4; PTK3; PTK3A; RTK6; TRKE
Mammalian Cell Selection:	Neomycin
Vector:	pCMV6-AC-GFP (PS100010)
E. coli Selection:	Ampicillin (100 ug/mL)



[View online »](#)

ORF Nucleotide Sequence:

>RG222767 representing NM_013993
 Red=Cloning site Blue=ORF Green=Tags(s)

TTTTGTAATACGACTCACTATAGGGCGGCCGGAATTCGTCGACTGGATCCGGTACCGAGGAGATCTGCC
 GCC**GCGATCGCC**

ATGGGACCAGAGGCCCTGTCATCTTTACTGCTGCTCTTGGTGCAAGTGAGATGCTGACATGAAGG
 GACATTTTATCCTGCCAAGTGCCTATGCCCTGGGCATGCAGGACCGGACCATCCAGACAGTGACAT
 CTCTGCTTCCAGCTCCTGGTCAGATTCCACTGCCGCCGCCACAGCAGGTTGGAGAGCAGTGACGGGGAT
 GGGCCTGGTGCCCGCAGGGTCCGTTTCCCAAGGAGGAGGACTTGCAGGTGGATCTACAACGAC
 TCCACCTGGTGGCTCTGGTGGGCACCCAGGGACGGCATGCCGGGGCCTGGGCAAGGAGTTCTCCCGGAG
 CTACCGGCTGCGTTACTCCCGGATGGTCGCCGCTGGATGGGCTGGAAGGACCGTGGGGTCAGGAGGTG
 ATCTCAGGCAATGAGGACCTGAGGAGTGGTGTGAAGGACCTGGGCCCCCATGGTTGCCGACTGG
 TTCGTTCTACCCCGGGCTGACCGGTCATGAGCGTCTGTCTGCCGGTAGAGCTCTATGGCTGCCTCTG
 GAGGGATGGACTCTGTCTTACACCGCCCTGTGGGCAGACAATGTATTTATCTGAGGCCGTGTACCTC
 AACGACTCCACCTATGACGGACATACCGTGGGCGGACTGCAATGGGGTCTGGCCAGCTGGCAGATG
 GTGTGGTGGGGCTGGATGACTTTAGGAAGATCAGGAGCTGCCGGTCTGGCCAGGCTATGACTATGTGGG
 ATGGAGCAACCACAGTTCTCCAGTGGCTATGTGGAGATGGAGTTGAGTTTGACCGGCTGAGGGCCTTC
 CAGGCTATGCAGGTCCACTGTAACAACATGCACACGCTGGGAGCCGCTGCCTGGCGGGGTGGAATGTC
 GCTTCCGGCGTGGCCCTGCCATGGCCTGGGAGGGGAGCCATGCGCCACAACCTAGGGGGCAACCTGGG
 GGACCCAGAGCCCGGGTGTCTCAGTGCCCTTGGCGCCGTGGCTCGCTTCTGCAGTGCCGCTTC
 CTCTTTGGGGCCCTGGTACTCTTACGCGAAATCTCCTTATCTCTGATGTGGTGAACAATTCCTCTC
 CGGCATGGGAGGCACCTTCCCGCAGCCCTGGTGGCCGCTGGCCACCTCCACCACTCCAGCTCAG
 CTTGGAGCTGGAGCCAGAGGCCAGAGCCCGTGGCCAAGGCCGAGGGGAGCCCGACCCGATCCTCATC
 GGCTGCCTGGTGGCCATCATCCTGCTCCTGCTCATATTGCCCTCATGCTCTGGCGGCTGCACTGGC
 GCAGGCTCCTCAGCAAGGCTGAACGAGGGTGTGGAAGAGGAGCTGACGGTTCACCTCTCTGTCCCTGG
 GGACACTATCCTCATCAACAACCGCCAGGTCCTAGAGAGCCACCCCGTACCAGGAGCCCGGCCCTCGT
 GGGAAATCCGCCCCACTCTGCTCCCTGTGCCCCAATGGCTCTGCGTTGCTGCTCTCAATCCAGCCTACC
 GCCTCCTTCTGGCCTTACGCCGTCCCTCGAGGCCCGGGCCCCCACACCCGCTGGGCCAAACC
 CACCAACACCCAGGCTACAGTGGGACTATATGGAGCCTGAGAAGCCAGGCGCCCGCTTCTGCCCCCA
 CCTCCCCAGAACAGCGTCCCCATTATGCCAGGCTGACATTGTTACCCTGCAGGGCGTACCCGGGGCA
 ACACCTATGCTGTGCCTGCACTGCCCCAGGGGAGTCCGGGATGGGCCCCAGAGTGGATTTCCCTCG
 ATCTCGACTCCGTTCAAGGAGAAGCTTGGCGAGGGCCAGTTGGGGAGGTGCACCTGTGTGAGGTGCAG
 AGCCCTCAAGATCTGGTCACTTGTATTTCCCTTAATGTGCGTAAGGGACACCCTTGTGCTAGCTG
 TCAAGATCTTACGGCCAGATGCCACCAAGAATGCCAGGAATGATTTCTGAAAGAGGTGAAGATCATGTC
 GAGGCTCAAGGACCCAAACATCATTCCGCTGCTGGCGTGTGTGTGCAGGACGACCCCTCTGCATGATT
 ACTGACTACATGGAGAACGGTGAACCAACAGTTCTCAGTCCACAGCTGGAGGACAAGGCAGCCG
 AGGGGGCCCTGGGGACGGGACGGCTGCGCAGGGGCCACCATCAGTACCCAATGCTGCTGCATGTGGC
 AGCCAGATCGCTCCGGCATGCGTATCTGGCCACACTCAACTTGTACATCGGGACCTGGCCACGCGG
 AACTGCCTAGTTGGGAAAATTTACCATCAAAATCGCAGACTTTGGCATGAGCCGGAACCTCTATGCTG
 GGGACTATTACCGTGTGCAGGGCCGGCAGTGTGCCATCCGCTGGATGGCCTGGGAGTGCATCCTCAT
 GGGGAAGTTCACGACTGCGAGTGACGTGTGGCCTTTGGTGTGACCCTGTGGGAGGTGCTGATGCTGT
 AGGGCCAGCCCTTTGGGACGCTACCGACGAGCAGGTATCGAGAACCGGGGGAGTTCTCCGGGACC
 AGGGCCGGCAGGTGTACCTGTCCCGCCGCTGCCTGCCCGCAGGGCCTATATGAGCTGATGCTTCGGT
 CTGGAGCCGGGAGTCTGAGCAGCAGCACCCCTTTCCAGCTGCATCGGTTCTGGCAGAGGATGCACTC
 AACACGGTG

ACGCGTACGCGGCCGCTCGAG – GFP Tag – GTTTAA

Protein Sequence: >RG222767 representing NM_013993
 Red=Cloning site Green=Tags(s)

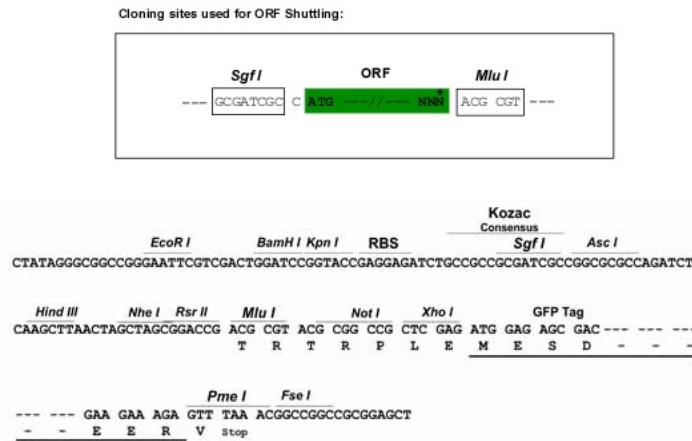
MGPEALSSLLLLLLVASGDADMKGHFDPKCRYALGMQDRTIPDSDISASSWSWSDTAARHSRLESSDGD
 GAWCPAGSVFPKEEYEQVLDLQRLHLVALVGTQGRHAGGLGKEFSRSYRLRYSRDGRRWMGWKDRWQEV
 ISGNEDPEGVVLKDLGPPMVARLVRFYPRADRVMSVCLRVELYGCLWRDGLLSYAPVGQTMYLSEAVYL
 NDSTYDGHTVGGLQYGGGLQGLADGVVGLDDFRKSQELRVWPGYDYVGSNHSFSSGYVEMEFDFRLRAF
 QAMQVHCNNMHTLGARLPGGVECRFRRGPAMAWEGEPMRHNLGGNLGDPRARAVSVPLGGRVARFLQCRF
 LFAGPWLLFSEISFISDVVNNSSPALGGTFPPAPWPPGPPPTNFSLELEPRGQQPVAKAEGSPTAILI
 GCLVAIIIIIIIIALMLWRLHWRLLSKAERRVLEEELTVHLSVPGDTILINNRPGPREPPPYQEPRPR
 GNPPHSAPCVNGSALLSNPAYRLLLATYARPPRGPGPPTPAWAKPTNTQAYS GDYMEPEKPGAPLLPP
 PPQNSVPHYAEADIVTLQGVTTGGNTYAVPALPPGAVGDGPPRVDFPRSRLRFKEKLGEGQFGEVHLCEVD
 SPQDLVSLDFPLNVRKGHPLLVAVKILRPDATKNARNDFLKEVKIMSRLKDPNIIRLLGVCVQDDPLCMI
 TDYMEGDLNQFLSAHQLEDKAAEGAPGDGQAAQGPTISYPMLLHVAAQIASGMRYLATLNFVHRDLATR
 NCLVGENFTIKIADF GMSRNL YAGDYRVQGRAVLP IRWMAWECILMGKFTTASDVWAFGVTLWEVLMC
 RAQPFQGLTDEQVIENAGEFRDQGRQVYLSRPPACPQGLYELMLRCWSRESEQRPPFSQLHRFLAEDAL
 NTV

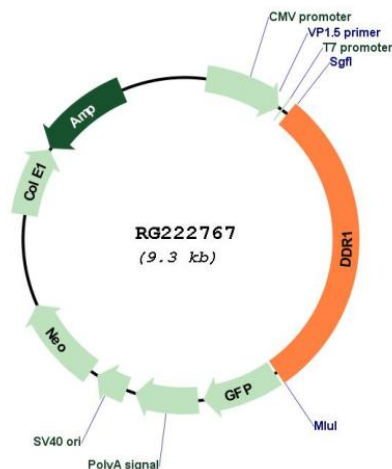
TRTRPLE – GFP Tag – V

Restriction Sites:

SgfI-MluI

Cloning Scheme:



Plasmid Map:


ACCN: NM_013993

ORF Size: 2739 bp

OTI Disclaimer: Due to the inherent nature of this plasmid, standard methods to replicate additional amounts of DNA in E. coli are highly likely to result in mutations and/or rearrangements. Therefore, OriGene does not guarantee the capability to replicate this plasmid DNA. Additional amounts of DNA can be purchased from OriGene with batch-specific, full-sequence verification at a reduced cost. Please contact our customer care team at custsupport@origene.com or by calling 301.340.3188 option 3 for pricing and delivery.

The molecular sequence of this clone aligns with the gene accession number as a point of reference only. However, individual transcript sequences of the same gene can differ through naturally occurring variations (e.g. polymorphisms), each with its own valid existence. This clone is substantially in agreement with the reference, but a complete review of all prevailing variants is recommended prior to use. [More info](#)

OTI Annotation: This clone was engineered to express the complete ORF with an expression tag. Expression varies depending on the nature of the gene.

Components: The ORF clone is ion-exchange column purified and shipped in a 2D barcoded Matrix tube containing 10ug of transfection-ready, dried plasmid DNA (reconstitute with 100 ul of water).

Reconstitution Method:

1. Centrifuge at 5,000xg for 5min.
2. Carefully open the tube and add 100ul of sterile water to dissolve the DNA.
3. Close the tube and incubate for 10 minutes at room temperature.
4. Briefly vortex the tube and then do a quick spin (less than 5000xg) to concentrate the liquid at the bottom.
5. Store the suspended plasmid at -20°C. The DNA is stable for at least one year from date of shipping when stored at -20°C.

RefSeq:	NM_013993.2 , NP_054699.2
RefSeq Size:	3877 bp
RefSeq ORF:	2742 bp
Locus ID:	780
UniProt ID:	Q08345
Cytogenetics:	6p21.33
Domains:	F5_F8_type_C, pkinase, TyrKc, S_TKc
Protein Families:	Druggable Genome, Protein Kinase, Transmembrane
Gene Summary:	Receptor tyrosine kinases play a key role in the communication of cells with their microenvironment. These kinases are involved in the regulation of cell growth, differentiation and metabolism. The protein encoded by this gene belongs to a subfamily of tyrosine kinase receptors with homology to Dictyostelium discoideum protein discoidin I in their extracellular domain, and that are activated by various types of collagen. Expression of this protein is restricted to epithelial cells, particularly in the kidney, lung, gastrointestinal tract, and brain. In addition, it has been shown to be significantly overexpressed in several human tumors. Alternatively spliced transcript variants encoding different isoforms have been described for this gene. [provided by RefSeq, Feb 2011]