

## Product datasheet for **RG222766**

### PRDM1 (NM\_182907) Human Tagged ORF Clone

#### Product data:

|                           |  |
|---------------------------|--|
| Product Type:             | Expression Plasmids                      |
| Product Name:             | PRDM1 (NM_182907) Human Tagged ORF Clone |
| Tag:                      | TurboGFP                                 |
| Symbol:                   | PRDM1                                    |
| Synonyms:                 | BLIMP1; PRDI-BF1                         |
| Mammalian Cell Selection: | Neomycin                                 |
| Vector:                   | pCMV6-AC-GFP (PS100010)                  |
| E. coli Selection:        | Ampicillin (100 ug/mL)                   |



[View online »](#)

ORF Nucleotide  
Sequence:

>RG222766 representing NM\_182907  
Red=Cloning site Blue=ORF Green=Tags(s)

TTTTGTAATACGACTCACTATAGGGCGGCCGGGAATTCGTCGACTGGATCCGGTACCGAGGAGATCTGCC  
GCC**CGGATCGCC**

ATGAAAAAGATCTATTCCAGAGGGGAGCTTCACTTTCATTGACGGCTTAAATGAAGAGAAAAGCAACT  
GGATGCGCTATGTGAATCCAGCACACTCTCCCGGGAGCAAAAACCTGGCTGCGTGTGAGAACGGGATGAA  
CATCTACTTCTACACCATTAAGCCCATCCCTGCCAACCCAGGAACCTTCTGTGTGGTATTGTCGGGACTTT  
GCAGAAAAGGCTTCACTACCCCTTATCCCGGAGAGCTGACAAATGATGAATCTCACACAAACACAGAGCAGTC  
TAAAGCAACCGAGCACTGAGAAAAATGAACTCTGCCCAAAGAATGTCCCAAAGAGAGAGTACAGCGTGAA  
AGAAATCTAAAATTGGACTCCAACCCCTCAAAGGAAAGGACCTCTACCGTTCTAACATTTACCCCTC  
ACATCAGAAAAGGACCTCGATGACTTTAGAAGAGCTGGGAGCCCCGAAATGCCCTTCTACCTCGGGTCG  
TTTACCCCATCCGGGCCCTCTGCCAGAAGACTTTTTGAAAGCTTCCCTGGCCTACGGGATCGAGAGACC  
CACGTACATCACTCGCTCCCCATTCCATCCTCCACCCTCAAGCCCCCTGCAAGAAGCAGCCCCGAC  
CAAAGCCTCAAGAGCTCCAGCCCTCACAGCAGCCCTGGGAATACGGTGTCCCTGTGGGCCCCGGCTCTC  
AAGAGCACCGGGACTCCTACGCTTACTTGAACGCGTCTACGGCACGGAAGGTTGGGCTCCTACCTGG  
CTACGCACCCCTGCCACCTCCCGCCAGCTTTCATCCCTCGTACAACGCTCACTACCCCAAGTTCCTC  
TTGCCCCCTACGGCATGAATTGTAATGGCCTGAGCGCTGTGAGCAGCATGAATGGCATCAACAACCTTTG  
GCCTTCTCCCGAGGCTGTGCCCTGTCTACAGCAATCTCCTCGGTGGGGGAGCCTGCCCAACCCATGCT  
CAACCCCACTTCTCTCCGAGCTCGTGCCTCAGATGGAGCCCGGAGGTTGCTCCAGCCGGAGCATCCC  
AGGGAGGTGCTTGTCCCGGCCCCACAGTGCCTTCTCCTTTACCGGGCCCGCCAGCATGAAGGACA  
AGGCCTGTAGCCCCACAAGCGGGTCTCCACGGCGGGAACAGCCGCCACGGCAGAACATGTGGTGCAGCC  
CAAAGCTACCTCAGCAGCGATGGCAGCCCCAGCAGCGACGAAGCCATGAATCTCATTAAAAACAAAAGA  
AACATGACCGGCTACAAGACCTTCCCTACCCGCTGAAGAAGCAGAACGGCAAGATCAAGTACGAATGCA  
ACGTTTGCCCAAGACTTTCGGCCAGCTCTCCAATCTGAAGGTCCACCTGAGAGTGCACAGTGGAGAACG  
GCCTTTCAAATGTCAGACTTGAACAAGGGCTTACTCAGCTCGCCACCTGCAGAAACTACCTGGTA  
CACACGGGAGAAAAGCCACATGAATGCCAGGTCTGCCACAAGAGATTTAGCAGCACCAGCAATCTCAAGA  
CCCACCTGCGACTCCATTCTGGAGAGAAACCATAACCAATGCAAGGTGTGCCCTGCCAAGTTCACCCAGTT  
TGTGCACCTGAACTGCACAAGCGTCTGCACACCCGGGAGCGGCCCCACAAGTGTCCCAGTGCCACAAG  
AACTACATCCATCTCTGTAGCCTCAAGGTTACCTGAAAGGGAAGTGCCTGCGGCCCGGCGCCTGGGC  
TGCCCTTGAAGATCTGACCCGAATCAATGAAGAAATCGAGAAGTTTGACATCAGTGACAATGCTGACCG  
GCTCGAGGACGTGGAGGATGACATCAGTGTGATCTCTGTAGTGGAGAAGGAAATTCTGGCCGTGGTCAGA  
AAAGAGAAAAGAAGAACTGGCCTGAAAGTGTCTTTGCAAAGAAACATGGGGAATGGACTCCTCTCCTCAG  
GGTGCAGCCTTTATGAGTCATCAGATCTACCCCTCATGAAGTTGCCTCCAGCAACCCACTACCTCTGGT  
ACCTGTAAGGTCAAACAAGAAACAGTTGAACCAATGGATCCT

AG**CGGACCG**ACGCGTACGCGGCCGCTCGAG – GFP Tag – GTTTAA

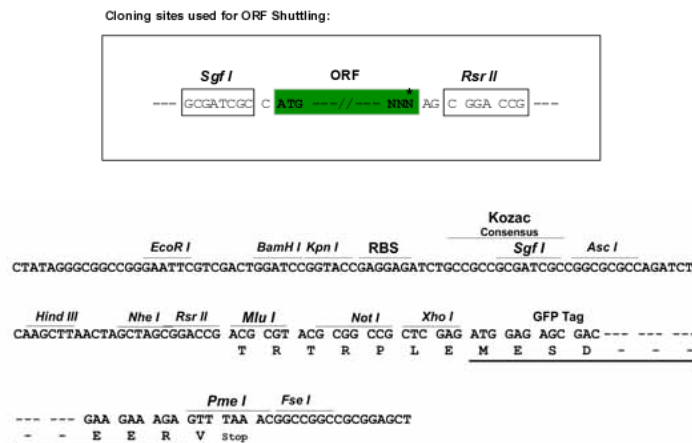
**Protein Sequence:** >RG222766 representing NM\_182907  
Red=Cloning site Green=Tags(s)

MEKIYSRGE LHHFIDGFNEEKSNWMRYVNP AHS PREQNL AACQNGMNIYFYTIKPI PANQELLVWYCRDF  
 AERLHYPYPGEL TMMNL TQTQSSLKQPST EKNELCPKNVPKREYSVKEILKLDNSNP SKGKDL YRSNISPL  
 TSEKLDLDFRRRGSP EMPFYPRVVYPIR APLPEDFLKASLAYGIERPTYITRSPISSTTPSP SARSSPD  
 QSLKSSSPHSSPGNTVSPVGP GSQEHRDSYAYLNASYGT EGLGSYPGYAPLPHLPPAFIPSYNAHYPKFL  
 LPPYGMNCNGLSAVSSMNGINNFGLFPRLCPVYSNLLGGGSLPHM LNP TSLPSSLP SDGARRLLQPEHP  
 REVLPAPHS AF SFTGAAASMKDKAC SPTS GSPTAGTAATAEHVVQPKATSAAMAAPSSDEAMNL IKNKR  
 NMTGYKTL PYPLKQNGKIKYECN VCAKTFGQLSNLKVHLRVHSGERP FKCQTCNKGFTQLAHLQKH YLV  
 HTGEKPH ECQVCHKRFSSTNLKTHLRLHSGEKPYQCKVCPAKFTQFVHLK LHKRLHTRERPHKCSQCHK  
 NYIHLCSLKVHLKGNCAAPAPGLPLEDLTRINEEIEKFDISDNADRL EDVEDDISVISVVEKEILAVVR  
 KEKETGLKVSLQRNMG NLLSSGCSL YESSDLPLMKLPPSNPLPLVPVKVQETVEPMDP

SGPTRRRLE - GFP Tag - V

**Restriction Sites:** SgfI-RsrII

**Cloning Scheme:**



**ACCN:** NM\_182907

**ORF Size:** 2073 bp

**OTI Disclaimer:** The molecular sequence of this clone aligns with the gene accession number as a point of reference only. However, individual transcript sequences of the same gene can differ through naturally occurring variations (e.g. polymorphisms), each with its own valid existence. This clone is substantially in agreement with the reference, but a complete review of all prevailing variants is recommended prior to use. [More info](#)

**OTI Annotation:** This clone was engineered to express the complete ORF with an expression tag. Expression varies depending on the nature of the gene.

**Components:** The ORF clone is ion-exchange column purified and shipped in a 2D barcoded Matrix tube containing 10ug of transfection-ready, dried plasmid DNA (reconstitute with 100 ul of water).

**Reconstitution Method:**

1. Centrifuge at 5,000xg for 5min.
2. Carefully open the tube and add 100ul of sterile water to dissolve the DNA.
3. Close the tube and incubate for 10 minutes at room temperature.
4. Briefly vortex the tube and then do a quick spin (less than 5000xg) to concentrate the liquid at the bottom.
5. Store the suspended plasmid at -20°C. The DNA is stable for at least one year from date of shipping when stored at -20°C.

**RefSeq:** [NM\\_182907.3](#)

**RefSeq Size:** 4675 bp

**RefSeq ORF:** 2076 bp

**Locus ID:** 639

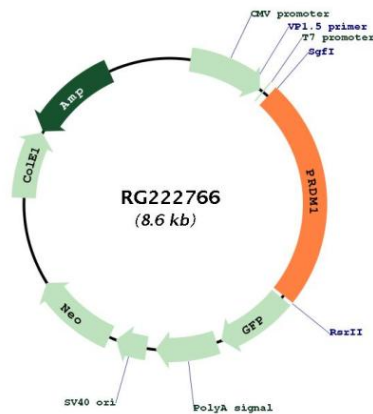
**UniProt ID:** [O75626](#)

**Cytogenetics:** 6q21

**Protein Families:** Transcription Factors

**Gene Summary:** This gene encodes a protein that acts as a repressor of beta-interferon gene expression. The protein binds specifically to the PRDI (positive regulatory domain I element) of the beta-IFN gene promoter. Transcription of this gene increases upon virus induction. Two alternatively spliced transcript variants that encode different isoforms have been reported. [provided by RefSeq, Jul 2008]

### Product images:



Circular map for RG222766