

Product datasheet for **RG222752**

HIC1 (NM_006497) Human Tagged ORF Clone

Product data:

| | |
|---------------------------|---|
| Product Type: | Expression Plasmids |
| Product Name: | HIC1 (NM_006497) Human Tagged ORF Clone |
| Tag: | TurboGFP |
| Symbol: | HIC1 |
| Synonyms: | hic-1; ZBTB29; ZNF901 |
| Mammalian Cell Selection: | Neomycin |
| Vector: | pCMV6-AC-GFP (PS100010) |
| E. coli Selection: | Ampicillin (100 ug/mL) |



[View online »](#)

ORF Nucleotide Sequence:

>RG222752 representing NM_006497
 Red=Cloning site Blue=ORF Green=Tags(s)

TTTTGTAATACGACTCACTATAGGGCGGCCGGGAATTCGTCGACTGGATCCGGTACCGAGGAGATCTGCC
 GCC**GCGATCGCC**

ATGCTGGACACGATGGAGGCGCCCGCCACTCCAGGCAGCTGCTGCTGCAGCTCAACAACCAGCGCACCA
 AGGGCTTCTTGTGCGACGTGATCATCGTGGTGCAGAACGCCCTTCCGCGCGCACAGAACGTCGTGGC
 GGCCAGCAGCGCTACCTCAAGTCCCTGGTGGTGCATGACAACCTGCTAACCTGGACCATGACATGGTG
 AGCCCGGCGTGTTCGCTGGTGGTGGTGGTGGTGGTGGTGGTGGTGGTGGTGGTGGTGGTGGTGGTGGT
 CTGCGGCCGCGCGCTGGCCCCGGGGGTGAGCCGAGCCTGGGCGCCGTGCTGGCCGCCAGCTACCT
 GCAGATCCCCGACCTCGTGGCGCTGTGCAAGAAACGCCTCAAGCGCCACGGCAAGTACTGCCACCTGCGG
 GCGCGCGCGCGCGCGCGCGCGCTACGCGCCCTATGGTGGCGCGCGCGCGCGCTGCGGGCCGCCACGC
 CGGTATCCAGGCTGTACCCGTCCCCAGTCGGGCTCCGCCCGCCCTGCCCGGAGCCGCCCTCGGG
 CCCAGAGCGCGGTCAACACGCACTGCGCCGAGCTGTACGCGTGGGACCCGGCCCGCGCGCCGCACTC
 TGTGCCTCGGAGCGCCGTGCTCCCTCTTTGTGGCTGGACCTGTCCAAGAAGAGCCCGCGGGCTCCG
 CGGCGCCAGAGCGCCGCTGGCTGAGCGCGAGCTGCCCGCGCCGGACAGCCCTCCAGCGCCGGCCC
 CGCCGCTACAAGGAGCCGCTCTCGCCCTGCCGTGCTGCCCGCTGCCCTTCCAGAAGCTGGAGGAG
 GCCGCACCGCTTCCGACCCATTCGCGCGGCAGCGGCAGCCCGGACCCGAGCCCCCGCGCCCGCCCG
 ACGGGCTAGTCTCTCTATCGTGGATGAAGCACGAGCCGGGCTGGGTAGCTATGGCGACGAGCTGGG
 CCGGGAGCGCGCTCCCCAGCGAGCGCTGCGAAGAGCGTGGTGGGACGCGCCGTCTCGCCCGGGGG
 CCCCCGCTCGGCTGGCGCCCGCGCGCTACCCTGGCAGCTGGACGGCCCGCGCGCGCGCGCGGACG
 CGAGGACTACAAGAGCAGCAGGAGGAGACCGGTAGCAGCGAGGACCCAGCCCGCTGGCGGCCACT
 CGAGGGTACCCATGCCCGCACCTGGCCTATGGCGAGCCGAGAGCTTCGGTGACAACCTGTACGTGTGC
 ATTCCGTGCGGCAAGGGTTCCTCCAGCTCTGAGCAGCTGAACGCGCACGTGGAGGCTCACGTGGAGGAGG
 AGGAAGCGCTGTACGGCAGGGCCGAGGGCGCCGAAGTGGCCGCTGGGGCCCGCGCTAGGGCCCCCTTT
 TGGAGGCGCGGGGACAAGGTCGCGGGGCTCCGGGTGGCTGGGAGAGCTGCTGCGGCCCTACCGTGC
 GCGTGTGCGACAAGAGCTACAAGGACCCGCCACGCTGCGGCAGCAGAGAAGACGCACTGGCTGACCC
 GGCCTACCCATGCACCATCTGCGGGAAGAAGTTCACGCAGCGTGGGACCATGACGCGCCACATGCGCAG
 CCACCTGGGCTCAAGCCCTTCGCTGCGACGCGTGGGATGCGGTTACGCGCCAGTACCGCCTCAGG
 GAGCAGTGCATCCACTCGGGCGAGAAGCCCTACGAGTGCAGGTGTGCGGCGCAAGTTCGCACAGC
 AACGCAACCTCATCAGCCACATGAAGATGCACGCGTGGGGGGCGCGCCGGCGCGCGGGCGCTGGC
 GGGCTTGGGGGGCTCCCCGGCTCCCCGGCCCCGACGGCAAGGCAAGCTCGACTTCCCCGAGGGCGTC
 TTTGCTGTGGCTCGCTCACGGCCGAGCAGCTGAGCCTGAAGCAGCAGGACAAGGCGCCCGCGCGGAGC
 TGCTGGCGCAGACCAGCACTTCTGCACGACCCCAAGGTGGCGCTGGAGAGCCTTACCCGCTGGCCAA
 GTTACGGCCGAGCTGGGCTCAGCCCCGACAAGGCGCGCGAGGTGCTGAGCCAGGGCGCTCACCTGGCG
 GCCGGGCCGACGGCCGACCATCGACCGTTTCTCTCCACC

AG**CGGACCG**ACGCGTACGCGGCCGCTCGAG - GFP Tag - GTTTAA

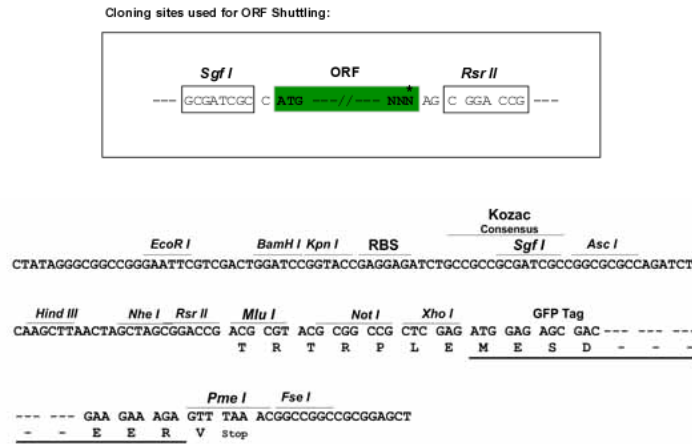
Protein Sequence: >RG222752 representing NM_006497
 Red=Cloning site Green=Tags(s)

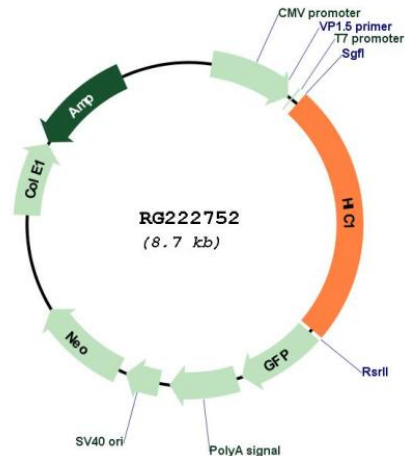
MLDTMEAPGHSRQLLLQLNNQRTKGFLCDVIVVQNALFRAHKNVLAASSAYLKSLVVHDNLLNLDHDMV
 SPAVFRLVLDFIYTGRLADGAEAAAAA VAPGAEP SLGAVLAAASYLQIPDLVALCKKRLKRHGKYCHLR
 GGGGGGGYAPYGRPGRGLRAATPVIQACYPSPVGGPPPPAAEPPSGPEAAVNTHCAEL YASGPGPAAAL
 CASERRCSPLCGLDL SKKSPPGSAAPERPLAERELPPRPDSPPSAGPAAYKEPPLALPSLPPLPFQKLEE
 AAPPSDPFRGGSGSPGPEPPGRPDGPSLLYRWMKHEPGLGSYGDELGRERGSPSERCEERGGDAAVSPGG
 PPLGLAPPRYPGSLDGPAGGDDYKSSSEETGSSSEDPSPGGHLEGYPCPHLAYGEPESFGDNLVVC
 IPCGKGFPSSEQLNAHVEAHVEEEALYGRAEAAEVAAGAAGLPPFGGGGDKVAGAPGGLGELLRPYRC
 ASCDKSYKDPATLRQHEKTHWL TRYPYCTICGKKFTQRTMTRHMRSHLGLKPFACDACGMRFTRQYRLT
 EHMRIHSGEKPYECQVCGGKFAQQRNLI SHMKMHAVGGAAGAAGALAGLGLPGVPGPDGKGLDFPEGV
 FAVARLTAEQLSLKQQDKAAAELLAQTTHFLHDPKVALESYLPLAKFTAELGLSPDKAAEVL SQGAHLA
 AGPDGRTIDRFSP

SGPTRRRLE - GFP Tag - V

Restriction Sites: SgfI-RsrII

Cloning Scheme:



Plasmid Map:


ACCN: NM_006497

ORF Size: 2142 bp

OTI Disclaimer: The molecular sequence of this clone aligns with the gene accession number as a point of reference only. However, individual transcript sequences of the same gene can differ through naturally occurring variations (e.g. polymorphisms), each with its own valid existence. This clone is substantially in agreement with the reference, but a complete review of all prevailing variants is recommended prior to use. [More info](#)

OTI Annotation: This clone was engineered to express the complete ORF with an expression tag. Expression varies depending on the nature of the gene.

Components: The ORF clone is ion-exchange column purified and shipped in a 2D barcoded Matrix tube containing 10ug of transfection-ready, dried plasmid DNA (reconstitute with 100 ul of water).

Reconstitution Method:

1. Centrifuge at 5,000xg for 5min.
2. Carefully open the tube and add 100ul of sterile water to dissolve the DNA.
3. Close the tube and incubate for 10 minutes at room temperature.
4. Briefly vortex the tube and then do a quick spin (less than 5000xg) to concentrate the liquid at the bottom.
5. Store the suspended plasmid at -20°C. The DNA is stable for at least one year from date of shipping when stored at -20°C.

RefSeq: [NM_006497.4](#)

RefSeq Size: 2626 bp

RefSeq ORF: 2145 bp

Locus ID: 3090

UniProt ID: [Q14526](#)

Cytogenetics: 17p13.3

Gene Summary: This gene functions as a growth regulatory and tumor repressor gene. Hypermethylation or deletion of the region of this gene have been associated with tumors and the contiguous-gene syndrome, Miller-Dieker syndrome. Alternative splicing of this gene results in multiple transcript variants. [provided by RefSeq, Sep 2010]