

## Product datasheet for **RG222740**

### CARD11 (NM\_032415) Human Tagged ORF Clone

#### Product data:

**Product Type:** Expression Plasmids  
**Product Name:** CARD11 (NM\_032415) Human Tagged ORF Clone  
**Tag:** TurboGFP  
**Symbol:** CARD11  
**Synonyms:** BENTA; BIMP3; CARMA1; IMD11; IMD11A; PPBL  
**Mammalian Cell Selection:** Neomycin  
**Vector:** pCMV6-AC-GFP (PS100010)  
**E. coli Selection:** Ampicillin (100 ug/mL)  
**ORF Nucleotide Sequence:** >RG222740 representing NM\_032415  
Red=Cloning site Blue=ORF Green=Tags(s)

TTTTGTAATACGACTCACTATAGGGCGGCCGGAATTCGTCGACTGGATCCGGTACCGAGGAGATCTGCC  
GCC**CGATCGCC**

ATGCCAGGAGGGCCAGAGATGGATGACTACATGGAGACGCTGAAGGATGAAGAGGACGCCTTGTTGGG  
AGAATGTGGAGTGAACCGGCACATGCTCAGCCGCTATATCAACCCTGCCAAGCTCACGCCCTACCTGCG  
TCAGTGAAGGTCATTGATGAGCAGGATGAAGATGAAGTGCTTAATGCCCTATGCTGCCATCCAAGATC  
AACCGAGCAGGCCGCTGTTGGACATTCTACATACCAAGGGCAAAGGGCTATGTGGTCTTCTGGAGA  
GCCTAGAATTTTATTACCCAGAAGTGTACAAACTGGTGACTGGGAAAGAGCCCACTCGGAGATTCTCCAC  
CATTGTGGTGGAGGAAGGCCACGAGGGCCTCACGCACTTCTGATGAACGAGGTCATCAAGCTGCAGCAG  
CAGATGAAGGCCAAGGACCTGCAACGCTGCGAGCTGCTGGCCAGGTTGCGGCAGCTGGAGGATGAGAAGA  
AGCAGATGACGCTGACGCGCTGGAGCTGCTAACCTTCCAGGAGCGGTAACAAGATGAAGGAAGAGCG  
GGACAGCTACAATGACGAGCTGGTCAAGGTGAAGGACGACAACAACAAGTCCAGCATGCGTACGCACAG  
CTCAGTGAGGAGAAGAATGCGCGTATGAGGAGCCGAGACCTCCAAGTTCGAGATCGATCAGCTAAAGC  
ACCGGTTGAATAAGATGGAGGAGGAATGTAAGCTGGAGAGAAATCAGTCTCTAAAAGTGAAGAATGACAT  
TGAAAAATCGGCCAAGAAGGAGCAGGTTCTGGAAGTGGAGCGGGAAGTGAATGCTGAAGACAAAAAC  
CAGGAGCTGCAGTCCATCATCCAGGCCGGAAGCGCAGCCTGCCAGACTCAGACAAGGCCATCCTGGACA  
TCTTGGAACACGACCGCAAGGAGGCCCTGGAGGACAGGCAGGAGCTGGTCAACAGGATCTACAACCTGCA  
GGAGGAGGCCCGCAGGACAGGAGCTGCGAGACAAGTACCTGGAGGAGAAGGAGGACCTGGAGCTCAAG  
TGCTCGACCTGGGAAAGGACTGTGAAATGTACAAGCACCAGCATGAACACGGTCTGCTGCAGCTGGAGG  
AGGTGGAGCGGGAGCGGACCAGGCCTTCCACTCCCGAGATGAAGCTCAGACACAGTACTCGCAGTGCTT  
AATCGAAAAGGACAAGTACAGGAAGCAGATCCGCGAGCTGGAGGAGAAGAACGACGAGATGAGGATCGAG  
ATGGTGCAGCGGGAGGCCTGCATCGTCAACCTGGAGAGCAAGCTGCGGCGCTCTCCAAGGACAGCAACA  
ACCTGGACCAGAGTCTGCCAGGAACCTGCCAGTAACCATCATCTCTCAGGACTTTGGGGATGCCAGCCC  
CAGGACCAATGGTCAAGAAGCTGACGATTCTTCCACTCGGAGGAGTCACTGAAGACAGCAAGTACTTC



CTGCCCTACCATCCGCCCCAGCGCAGGATGAACCTGAAGGGCATCCAGCTGCAGAGACCAATCCCCCA  
TCAGCCTGAAGCGAACATCAGATTTTCAAGCCAAGGGGCACGAGGAAGAAGGCACGGACGCCAGCCCTAG  
CTCCTGCGGATCTCTGCCATCACCAACTCCTTACCAAGATGCAGCCCCCGGAGCCGACGAGCATC  
ATGTCAATCACCGCCGAGCCCCGGAAACGACTCCATCGTCAGACGCTACAAGGAGGACGCGCCCCATC  
GCAGCACAGTCGAAGAAGACAATGACAGCGGGGTTTACGCGCTTAGATCTGGATGATGACAGTCACGA  
ACGCTACTCCTTCGGACCCTCCTCCATCCAATCCTCCTCCTCCTCCCACCAATCCGAGGGCCTGGATGCC  
TACGAACTGGAGCAGTCAACCTCATGTTCAAGGAAGTTCTCTCTGGAAAGACCCCTCCGGCCTTCGGTCA  
CCTCTGTGGGGCACGTGCGGGGCCAGGGCCCTCGGTGCAGCACACGACGCTGAATGGCGACAGCCCTCAC  
CTCCCAGCTCACCTGCTGGGGGCAACGCGCAGGGAGCTTCGTGCACTCGGTCAAGCCTGGCTCTCTG  
GCCGAGAAAGCCGGCCTCCGTGAGGGCCACCAGCTGCTGCTGCTAGAAGGCTGCATCCGAGGCGAGAGGC  
AGAGTGTCCCCTGGACACATGCACAAAGAGGAAGCCACTGGACCATCCAGAGGTGCAGCGGCCCCGT  
CACGCTGCACTACAAGGTCAACCACGAAGGTACCGAAGCTGGTGAAGGACATGGAGGACGGCCTGATC  
ACATCGGGGACTCGTTTACATCCGGCTGAACCTGAACATCTCCAGCCAGCTGGACGCCTGCACCATGT  
CCCTGAAGTGTGACGATGTTGTGACGTCCTGACACCATGTACCAGGACAGGCACGAGTGGCTGTGCGC  
GCGGGTCGACCCTTTCACAGACCATGACCTGGATATGGGCACCATACCCAGCTACAGCCGAGCCCAGCAG  
CTCCTCCTGGTGAACCTGCAGCGCTGATGCACCGAGGCAGCCGGAGGAGGTAGACGGCACCCACCACA  
CCCTGCGGGCACTCCGGAACACCCTGCAGCCAGAAGAAGCGCTTTC AACAAAGCGACCCCGGGTACGCC  
CCGTCTCTCGCGAGCAAGCTTCTTTTTGGCCAGCTCCTTCAGTTCGTACGACAGTCCGAGAAACAAGTAT  
AAGCGGATGAACAGCAACGAGCGGGTCCGCATCATCTCGGGGAGTCCGCTAGGGAGCCTGGCCCGGTCTCT  
CGCTGGACGCCACCAAGCTTTGACTGAGAAGCAGGAAGAGCTGGACCCTGAGAGCGAGCTGGGCAAGAA  
CCTCAGCCTCATCCCCTACAGCCTGGTACGCGCCTTCTACTGCGAGCGCCCGGCCCGTCTTTCACA  
CCCACCGTGTGGCCAAGACGCTGGTGCAGAGGCTGCTCAACTCGGGAGGTGCCATGGAGTTCACCATCT  
GCAAGTCAGATATCGTCAACAAGAGATGAGTTCCTCAGAAGGCAGAAGACGAGACCATCATCTACTCCCG  
AGAGAAGAACCCCAACGGTTCGAATGCATCGCCCTGCCAACATTGAAGCTGTGGCCGCAAGAACAAG  
CACTGCCTGCTGGAGGCTGGGATCGGCTGCACAAGAGACTTGATCAAGTCCAACATCTACCCCATCGTGC  
TCTTCATCCGGGTGTGTGAGAAGAACATCAAGAGGTTTCAGAAAGCTGCTGCCCGACCTGAGACGGAGGA  
GGAGTTCCTGCGCGTGTGCCGGCTGAAGGAGAAGGAGCTGGAGGCCCTGCCGTGCTGTACGCCACGGTG  
GAACCTGACATGTGGGGCAGCGTAGAGGAGCTGCTCCGCGTTGTCAAGGACAAGATCGGCGAGGAGCAGC  
GCAAGACCATCTGGGTGGACGAGGACCAGCTG

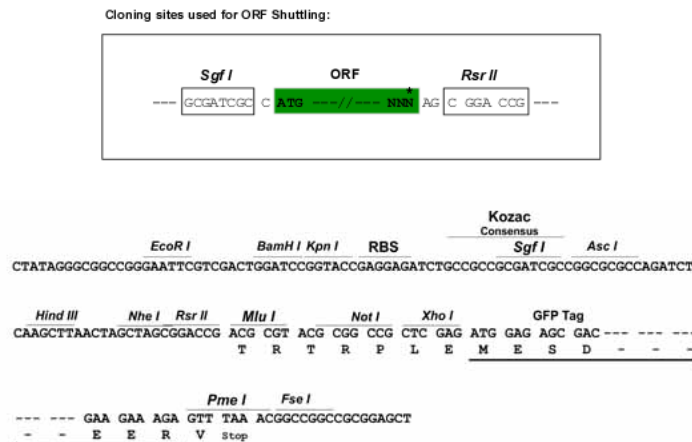
AGCGGACCGACGCGTACGCGGCCGCTCGAG - GFP Tag - GTTTAA

**Protein Sequence:** >RG222740 representing NM\_032415  
 Red=Cloning site Green=Tags(s)

MPGGGPEMDDYMETLKDEEDALWENVECNRHMLSRYPNPAKLTPYLRQCKVIDEQDEDEVLNAPMLPSKI  
 NRAGRLLDILHTKGQGRGVVFLLESLEFYYPELYKLVTKGKEPTRRFSTIVVEEGHEGLTHFLMNEVIKLQQ  
 QMKAKDLQRCELLARLRQLEDEKKQMTLTRVELLTFQERYKMKKEERDSYNDELVKVKDDNYNLAMRYAQ  
 LSEENMAVMRSDRLQLEIDQLKHRLNKMEECKLERNQSLKLNNDIENRPKKEQVLELERENEMLKTKN  
 QELQSIIQAGKRSLPDSKAILDILEHDRKEALEDRQELVNRIYNLQEEARQAEELRDKYLEEKEDLELK  
 CSTLGKDCEMYKHRMNTVMLQLEEVERERDQAFHSRDEAQTQYSQCLIEKDQYRQKQIRELEEKNDEMRIE  
 MYRREACIVNLESKLRRLSKDSNNLDQSLPRNLPVTIISQDFGDASPRTNGQEADDSSTSEESPEDSKYF  
 LPYHPPQRRMNLKGIQLQRAKSPISLKRSTDFQAKGHEEEGTDASPSSCGSLPITNSFTKMQPPRSRSSI  
 MSITAEPNGNDSIVRRYKEDAPHRSTVEEDNDSGGFDALDLDDSHERYSGPSSIHSSSSSHQSEGLDA  
 YDLEQVNL MFRKFSLE RPFPSVTSVGHVRGPGPSVQHTTLNGDSLTSQLTLLGGNARGSFVHSVPGSL  
 AEKAGLREGHQLLLLLEGCIRGERQSVPLDTCTKEEAHWIQRCSGPVTLHYKVNHEGYRKLVKDMEDGLI  
 TSGDSFYIRLNLNLISSQLDACTMSLKCDVHVHRDTMYQDRHEWL CARVDPFTDHDLDMGTPSYRAQQ  
 LLLVKLQRLMHRGSREEVDGTHHTLRALRNTLQPEEALSTSDPRVSPRLSRASFLFGQLLQFVSRSENKY  
 KRMNSNERVRIISGSPGLSARSSLDATKLLTEKQEELDPESELGKNLSLIPYSLVRAFYCERRRPVFT  
 PTVLAKTLVQRLNLSGGAMEFTICKSDIVTRDEFLLRRQKTETIIYSREKNPNAFECIAPANIEAFAAKNK  
 HCLLEAGIGCTRDLIKSNIPYIVLFI R VCEKNIKRFRKLLPRPETEEEFRLVRCRLKEKELEALPCLYATV  
 EPDMWGSVEELLRVVKDKIGEEQRKTIWVDEDQL

SGPTRRRLE - GFP Tag - V

**Restriction Sites:** SgfI-RsrII  
**Cloning Scheme:**

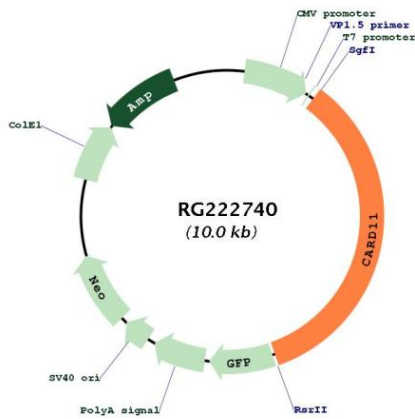


**ACCN:** NM\_032415  
**ORF Size:** 3462 bp

<b>OTI Disclaimer:</b>	<p>Due to the inherent nature of this plasmid, standard methods to replicate additional amounts of DNA in E. coli are highly likely to result in mutations and/or rearrangements. Therefore, OriGene does not guarantee the capability to replicate this plasmid DNA. Additional amounts of DNA can be purchased from OriGene with batch-specific, full-sequence verification at a reduced cost. Please contact our customer care team at <a href="mailto:custsupport@origene.com">custsupport@origene.com</a> or by calling 301.340.3188 option 3 for pricing and delivery.</p> <p>The molecular sequence of this clone aligns with the gene accession number as a point of reference only. However, individual transcript sequences of the same gene can differ through naturally occurring variations (e.g. polymorphisms), each with its own valid existence. This clone is substantially in agreement with the reference, but a complete review of all prevailing variants is recommended prior to use. <a href="#">More info</a></p>
<b>OTI Annotation:</b>	This clone was engineered to express the complete ORF with an expression tag. Expression varies depending on the nature of the gene.
<b>Components:</b>	The ORF clone is ion-exchange column purified and shipped in a 2D barcoded Matrix tube containing 10ug of transfection-ready, dried plasmid DNA (reconstitute with 100 ul of water).
<b>Reconstitution Method:</b>	<ol style="list-style-type: none"> <li>1. Centrifuge at 5,000xg for 5min.</li> <li>2. Carefully open the tube and add 100ul of sterile water to dissolve the DNA.</li> <li>3. Close the tube and incubate for 10 minutes at room temperature.</li> <li>4. Briefly vortex the tube and then do a quick spin (less than 5000xg) to concentrate the liquid at the bottom.</li> <li>5. Store the suspended plasmid at -20°C. The DNA is stable for at least one year from date of shipping when stored at -20°C.</li> </ol>
<b>RefSeq:</b>	<a href="#">NM_032415.7</a>
<b>RefSeq Size:</b>	4372 bp
<b>RefSeq ORF:</b>	3465 bp
<b>Locus ID:</b>	84433
<b>UniProt ID:</b>	<a href="#">Q9BXL7</a>
<b>Cytogenetics:</b>	7p22.2
<b>Protein Families:</b>	Druggable Genome
<b>Protein Pathways:</b>	B cell receptor signaling pathway, T cell receptor signaling pathway

**Gene Summary:**

The protein encoded by this gene belongs to the membrane-associated guanylate kinase (MAGUK) family, a class of proteins that functions as molecular scaffolds for the assembly of multiprotein complexes at specialized regions of the plasma membrane. This protein is also a member of the CARD protein family, which is defined by carrying a characteristic caspase-associated recruitment domain (CARD). This protein has a domain structure similar to that of CARD14 protein. The CARD domains of both proteins have been shown to specifically interact with BCL10, a protein known to function as a positive regulator of cell apoptosis and NF-kappaB activation. When expressed in cells, this protein activated NF-kappaB and induced the phosphorylation of BCL10. [provided by RefSeq, Jul 2008]

**Product images:**


Circular map for RG222740