

Product datasheet for **RG222673**

DCAF4L2 (NM_152418) Human Tagged ORF Clone

Product data:

Product Type: Expression Plasmids
Product Name: DCAF4L2 (NM_152418) Human Tagged ORF Clone
Tag: TurboGFP
Symbol: DCAF4L2
Synonyms: WDR21C
Mammalian Cell Selection: Neomycin
Vector: pCMV6-AC-GFP (PS100010)
E. coli Selection: Ampicillin (100 ug/mL)
ORF Nucleotide Sequence: >RG222673 representing NM_152418
Red=Cloning site Blue=ORF Green=Tags(s)

TTTTGTAATACGACTCACTATAGGGCGGCCGGAATTCGTCGACTGGATCCGGTACCGAGGAGATCTGCC
 GCCCGATCGCC

ATGGAGAGCAAAGACCGCGACTGCTCGAGGAAGCAGACAAGCAGAAAAAGACAGTCAGAGTGGGACTCA
 ATGCACCTTCCATGCTACGAAAGAACCAGCTAGGTTTCTCAGATTCGCCAACTATTGCCGTATAGCTCG
 CGAGCTGCGTGAAGCTGCATGCAGAGGAAAAAGGTCCAGATTCATAGCTGGGATCCCTCCTCTTTGGCA
 AGCGACCGATTTAACCGCATACTGGCGAATACCAACACTGACCAGCTCTCACAGTGAACCAAGTCAAG
 CTGGAGGCTCCAAGTACGGCATCATCCATGCGAGGCCTGACGACCCCTGAGCTCCGGGTATACCCGCA
 CAAAACCTCTACGTCCCTAATCGGAAGGTGAATTCTATGTGCTGGGCCTCACTGAATCACTTGGATTCC
 CACCTTCTGCTGTGCTTCGTGGGACTTGACAGATACTCCAAGCTGTGCCGTGCTGCTCCACGCGTCTGCTG
 TCATAGGTAGCTTCCCAGGAATGCGTCGGCCTGGCATGCTTTGCAGTTTCCAGATCCCTGATGCCTGGTC
 CTGTGCCCTGGTCCCTGAGCATCCACGCGTATCACTCTTTCAGTACAGGCTTGCTCAGCAGGTCCTGTTG
 ACCAACGTGGTGACGGGACACCAGCAGTCATTTGGGACTAGCAGTGATGTCTTGGCCAGCAGTTTGCAA
 TCATGACTCCTTTGCTGTTAATGGCTGTCGCTCTGGGGAGATCTTTGGCATTGATCTGCCGTGTGGAAA
 TCAAGGCAGCGGGTGAAGGCCATTTGCCTGTCCCATGATTCAAGCAGTACTTCTGCAATCCTCCAA
 GATGGCCAAATCCTGGTGCATCAGACATGACTGGAATCAAGCTGTGGGACTTGAGGGCCACTAAAT
 GTGTAACACAGTACGAAGGTGATGTGAATAACTCCGCTACCTACCCGTGCATGTGAACGAAGAAGAAGG
 AGTCGTGGCGGCCGTGGGCCAGGACTGCTACACGAGAATCTGGAGCCTCCGTCATGGCCACCTGCTCACA
 ACCATACCCTCCCATACCCCGCCTCGGAGAACGACATTCAGTGTGGCCTTCTCTTCTCGCCTCGGGG
 GCTCCGAGGAGCACCAGGGCTGCTCATGGCTGTCCGGGAGGACCTTTATTGTTTCTCCTACGGT

AGCGGACCGACCGGTACGCGGCCGCTCGAG - GFP Tag - GTTTAA



[View online »](#)

Protein Sequence: >RG222673 representing NM_152418
 Red=Cloning site Green=Tags(s)

MESKRPRLLLEEADKQKKTVRVGLNAPSMRLRKNQLGFLRFANYCRIARELRVSCMQRKKVQIHSWDPSSLA
 SDRFNRI LANTNDQLFTVNQVEAGGSKYGIITMRGLTPELRVYPHKLYVPNRKVNSMCWASLNHLDS
 HLLLCFVGLADTPSCAVLLPASLFIGSFGMRRPGMLCSFQIPDAWSCAWLSIHAYHSFSTGLSQQVLL
 TNVVTGHQSQSFGTSSDVLAAQQFAIMTPLL FNGCRSGEIFGIDLRCGNQGGGWKAIICLSHDSAVTSLQILQ
 DGQFLVSSDMTGTIKLWDLRATKCVTYEGHVNNSAYLPVHVNEEEGVVAAVGQDCYTRIWSLRHGHLTT
 TIPSPYASENDIPSVAFSSRLGGFRGAPGLLMAVREDLYCFYSYG

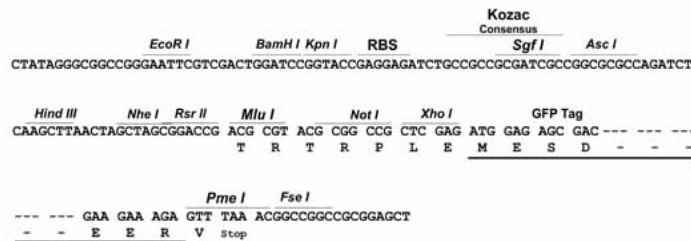
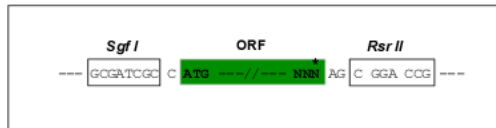
SGPTRRRLE - GFP Tag - V

Restriction Sites:

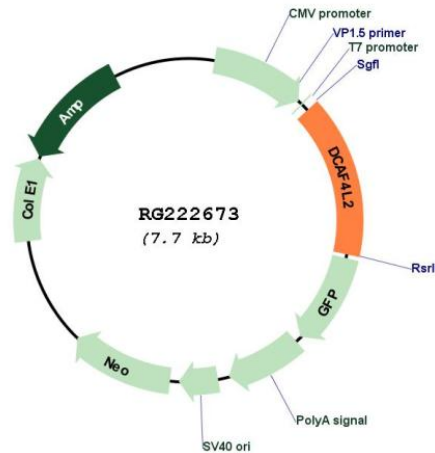
SgfI-RsrII

Cloning Scheme:

Cloning sites used for ORF Shuttling:



Plasmid Map:



ACCN:

NM_152418

ORF Size:	1185 bp
OTI Disclaimer:	The molecular sequence of this clone aligns with the gene accession number as a point of reference only. However, individual transcript sequences of the same gene can differ through naturally occurring variations (e.g. polymorphisms), each with its own valid existence. This clone is substantially in agreement with the reference, but a complete review of all prevailing variants is recommended prior to use. More info
OTI Annotation:	This clone was engineered to express the complete ORF with an expression tag. Expression varies depending on the nature of the gene.
Components:	The ORF clone is ion-exchange column purified and shipped in a 2D barcoded Matrix tube containing 10ug of transfection-ready, dried plasmid DNA (reconstitute with 100 ul of water).
Reconstitution Method:	<ol style="list-style-type: none">1. Centrifuge at 5,000xg for 5min.2. Carefully open the tube and add 100ul of sterile water to dissolve the DNA.3. Close the tube and incubate for 10 minutes at room temperature.4. Briefly vortex the tube and then do a quick spin (less than 5000xg) to concentrate the liquid at the bottom.5. Store the suspended plasmid at -20°C. The DNA is stable for at least one year from date of shipping when stored at -20°C.
RefSeq:	NM_152418.4
RefSeq Size:	3320 bp
RefSeq ORF:	1188 bp
Locus ID:	138009
UniProt ID:	Q8NA75
Cytogenetics:	8q21.3