

Product datasheet for **RG222668**

TAP2 (NM_018833) Human Tagged ORF Clone

Product data:

Product Type:	Expression Plasmids
Product Name:	TAP2 (NM_018833) Human Tagged ORF Clone
Tag:	TurboGFP
Symbol:	TAP2
Synonyms:	ABC18; ABCB3; APT2; D6S217E; PSF-2; PSF2; RING11
Mammalian Cell Selection:	Neomycin
Vector:	pCMV6-AC-GFP (PS100010)
E. coli Selection:	Ampicillin (100 ug/mL)



[View online »](#)

ORF Nucleotide Sequence:

>RG222668 representing NM_018833
 Red=Cloning site Blue=ORF Green=Tags(s)

TTTTGTAATACGACTCACTATAGGGCGGCCGGAATTCGTCGACTGGATCCGGTACCGAGGAGATCTGCC
 GCC**CGCATCGCC**

ATGCGGCTCCCTGACCTGAGACCTGGACCTCCCTGCTGCTGGTGGACGCGGCTTTACTGTGGCTGCTTC
 AGGGCCCTCTGGGACTTTGCTTCTCAAGGGCTGCCAGGACTATGGCTGGAGGGGACCCTGCGGCTGGG
 AGGGCTGTGGGGCTGCTAAAGCTAAGAGGGCTGCTGGGATTTGTGGGACACTGCTGCTCCCGCTCTGT
 CTGGCCACCCCTGACTGTCTCCCTGAGAGCCCTGGTCGCGGGGGCTCACGTGCTCCCCAGCCAGAG
 TCGCTTACAGCCCTTGGAGCTGGCTGCTGGTGGGTACGGGGCTGCGGGGCTCAGCTGGTCACTGTGGG
 TGTTCTGAGCCCTCTGGAGCCAGGAGAAGGAGCAGGACCAGGTGAACAACAAAGTCTTGATGTGGAGG
 CTGCTGAAGCTCTCCAGGCCGACCTGCCTCTCCTCGTTGCCGCTTCTTCTTCTTGTCTTGTCTGTTT
 TGGGTGAGACATTAATCCCTCACTATTCTGGTCTGTGATTGACATCCTGGGAGGTGATTTTGACCCCA
 TGCTTTGCCAGTGCCATCTTCTCATGTGCCTTCTCTTTGGCAGCTCACTGTCTGCAGGCTGCCGA
 GGAGGCTGCTTACCTACACCATGTCTCGAATCAACTTGGGATCCGGGAGCAGCTTTTCTCTCCCTGC
 TGGCCAGGACCTCGTTTCTTCCAGGAGACTAAGACAGGGGAGCTGAACTCACGGCTGAGCTCGGATAC
 CACCCTGATGAGTAACTGGCTTCTTTAAATGCCAATGTGCTCTTGCGAAGCCTGGTAAAGTGGTGGG
 CTGTATGGCTTCACTGCTCAGCATATCGCCTCGACTCACCTCCTTCTCTGCTGCACATGCCCTTCAAA
 TAGCAGCGGAGAAGGTGTACAACACCCGCCATCAGGAAGTGTTCGGGAGATCCAGGATGCAGTGGCCAG
 GGCGGGCAGGTGGTGGGGAAGCCGTTGGAGGGCTGCAGACCCTTCGCAGTTTTGGGGCCGAGGAGCAT
 GAAGCTGTGCTATAAAGAGGCCCTTGAACAATGTGGCAGCTGATTGGCGGAGAGACCTGGAACGCG
 CCTTGTACCTGCTCGTAAGGAGGGTGTGCACCTGGGGTGCAGATGCTGATGCTGAGTGTGGGCTGCA
 GCAGATGCAGGATGGGGAGCTCACCCAGGGCAGCCTGCTTCTTATGATCTACCAGGAGAGCGTGGGG
 AGCTATGTGCAGACCCTGGTATACATATATGGGATATGCTCAGCAACGTGGGAGCTGCAGAGAAGTTT
 TCTCTACATGGACCCAGCAAACTGCCTTACCTGGCACGCTTGGCCCCACCACTCTGCAGGGGGT
 TGTGAAATCCAAGAGCTCTCCTTGCATATCCCAATCGCCTGACAGGCTGTGCTCAAGGGGCTGACG
 TTTACCCTACGCTCTGGTGGTGGTGGGACCCAAATGGGTCTGGGAAGGACACAGTGGCTG
 CCCTGCTGCAGAACTGTACCAGCCACAGGGGACAGGTGCTGCTGGATGAAAAGCCCATCTCACAGTA
 TGAACACTGCTACCTGCACAGCCAGGTGGTTTCAGTTGGCAGGAGCCTGTGCTGTTCTCCGTTCTGTG
 AGGAACAACATTGCTTATGGGCTGCAGAGCTGCGAAGATGATAAGGTGATGGCGGCTGCCAGGCTGCC
 ACGCAGATGACTTCACTCCAGGAAATGGAGCATGGAATATACACAGATGTAGGGGAGAAGGGAAGCCAGT
 GGCTGCGGGACAGAAACACGTCTGGCCATTGCCCGGGCCCTTGTACGAGACCCGCGGTCTCATCCTG
 GATGAGGCTACTAGTGCCCTAGATGTGCAGTGCAGCAGGCCAAAACCTTTGGAAGTTCATGATATTT

ACGCGTACGCGGGCCGCTCGAG - GFP Tag - GTTTAA

Protein Sequence:

>RG222668 representing NM_018833
 Red=Cloning site Green=Tags(s)

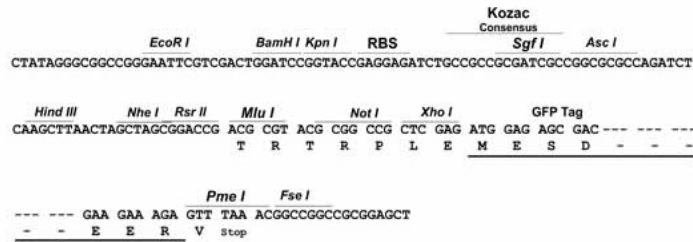
MRLPDLRPWTSLLLVDALLWLLQGPLGTLPLPQGLPGLWLEGLRLGGLWLLKLRGLLGFVGTLLLPLC
 LATPLTVSLRALVAGSRAPPARVASAPWSWLLVGYGAAGLSWSLWAVLSPPGAQEKEQDQVNNKVL MWR
 LLKLSRPDLPLLVAFFFLVLAVLGETLIPHYSGRVIDILGGDFDPHAFASAIFFMCLFSFGSSL SAGCR
 GGCFTYMSRINLRIREQLFSSLLRQDLGFFQETKTGELNSRLSSDTTLMNSWLPLNANVLLRSLVKVVG
 LYGFMLSISPRLTLLSLLHMPFTIAAEKVYNTRHQEVLREIQDAVARAGQVREAVGGLQTVRSFGAEH
 EVCRYKEALEQCRQLYWRDLERALLYLVRRVLHLGVQMLMLSCGLQMQDQDEL TQGSLLSFMIIQESVG
 SYVQTLVYIYGDMLSNVGAAEKVFSYMDRQPNLPSPGTLAPTTLQGVVKFQDVVSFAYPNRDRPVLKGLT
 FTLRPGEVTALVGPNGSGKSTVAALLQNL YQPTGGQVLLDEKPI SQYEHCYLHSQVVSQVQEPVLFSGSV
 RNNIAYGLQSCEDDKVMAAAQAADDFIQEMEHIYTDVGEKGSQLAAGQKQRLAIARALVRDPRVLIL
 DEATSALDVQCEQAKTLWKFMIF

TRTRPLE - GFP Tag - V

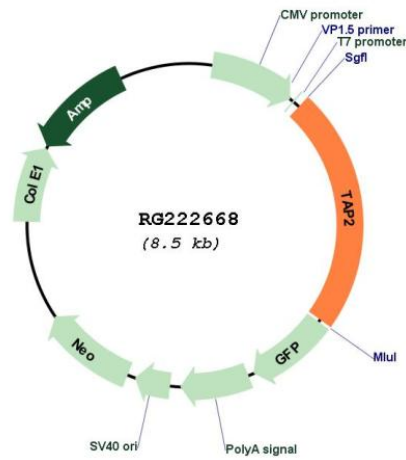
Restriction Sites: SgfI-MluI

Cloning Scheme:

Cloning sites used for ORF Shuttling:



Plasmid Map:



ACCN: NM_018833

ORF Size: 1959 bp

OTI Disclaimer: Due to the inherent nature of this plasmid, standard methods to replicate additional amounts of DNA in E. coli are highly likely to result in mutations and/or rearrangements. Therefore, OriGene does not guarantee the capability to replicate this plasmid DNA. Additional amounts of DNA can be purchased from OriGene with batch-specific, full-sequence verification at a reduced cost. Please contact our customer care team at custsupport@origene.com or by calling 301.340.3188 option 3 for pricing and delivery.

The molecular sequence of this clone aligns with the gene accession number as a point of reference only. However, individual transcript sequences of the same gene can differ through naturally occurring variations (e.g. polymorphisms), each with its own valid existence. This clone is substantially in agreement with the reference, but a complete review of all prevailing variants is recommended prior to use. [More info](#)

OTI Annotation: This clone was engineered to express the complete ORF with an expression tag. Expression varies depending on the nature of the gene.

Components: The ORF clone is ion-exchange column purified and shipped in a 2D barcoded Matrix tube containing 10ug of transfection-ready, dried plasmid DNA (reconstitute with 100 ul of water).

Reconstitution Method:

1. Centrifuge at 5,000xg for 5min.
2. Carefully open the tube and add 100ul of sterile water to dissolve the DNA.
3. Close the tube and incubate for 10 minutes at room temperature.
4. Briefly vortex the tube and then do a quick spin (less than 5000xg) to concentrate the liquid at the bottom.
5. Store the suspended plasmid at -20°C. The DNA is stable for at least one year from date of shipping when stored at -20°C.

RefSeq: [NM_018833.2](#), [NP_061313.2](#)

RefSeq Size: 2540 bp

RefSeq ORF: 1962 bp

Locus ID: 6891

UniProt ID: [Q03519](#)

Cytogenetics: 6p21.32

Domains: ABC_membrane, ABC_tran, AAA

Protein Families: Druggable Genome, Transmembrane

Protein Pathways: ABC transporters, Antigen processing and presentation, Primary immunodeficiency

Gene Summary:

The membrane-associated protein encoded by this gene is a member of the superfamily of ATP-binding cassette (ABC) transporters. ABC proteins transport various molecules across extra- and intra-cellular membranes. ABC genes are divided into seven distinct subfamilies (ABC1, MDR/TAP, MRP, ALD, OABP, GCN20, White). This protein is a member of the MDR/TAP subfamily. Members of the MDR/TAP subfamily are involved in multidrug resistance. This gene is located 7 kb telomeric to gene family member ABCB2. The protein encoded by this gene is involved in antigen presentation. This protein forms a heterodimer with ABCB2 in order to transport peptides from the cytoplasm to the endoplasmic reticulum. Mutations in this gene may be associated with ankylosing spondylitis, insulin-dependent diabetes mellitus, and celiac disease. Alternative splicing of this gene produces products which differ in peptide selectivity and level of restoration of surface expression of MHC class I molecules. [provided by RefSeq, Feb 2014]