

Product datasheet for **RG222641**

C3orf70 (NM_001025266) Human Tagged ORF Clone

Product data:

Product Type: Expression Plasmids
Product Name: C3orf70 (NM_001025266) Human Tagged ORF Clone
Tag: TurboGFP
Symbol: C3orf70
Mammalian Cell Selection: Neomycin
Vector: pCMV6-AC-GFP (PS100010)
E. coli Selection: Ampicillin (100 ug/mL)
ORF Nucleotide Sequence: >RG222641 representing NM_001025266
 Red=Cloning site Blue=ORF Green=Tags(s)

TTTTGTAATACGACTCACTATAGGGCGGCCGGGAATTCGTCGACTGGATCCGGTACCGAGGAGATCTGCC
 GCC**CGATCGCC**

ATGAGTGCGGCGCCTCGCCGGCGTCCGAGCGGGTTGGAAGAGCGAGAACTAGATGAGGCTCAGGCC
 TGGCGCGGAGTTGCGCCGCCCGCAGACCCGACTCCAGCCGTGCGACGGGCTGTCTATCTGTGCCACGCA
 CAGCCATGGCAAGTGCTCAAGCTGCACTGGTGTGTACCTAGGATGGTGTCACTGCAAATACATGTAT
 CAGCCTATGACCCTGTGGAACAGCTTCCAAGCACTGAGATTCCTGCCAGGCCTCGGGAACCCAAACA
 CCAATTCAGATCTCAGTCTCGCTCACCGAACACTTTTTGAAATTTGCATCTGTCTTCCAGCCTCCCCTCC
 CCCTGACTCACCGAGTACTGTATGATTTAGACCTTTTTATTGACAATATCAGGTTAAATGTATTAAT
 GGAAGATGTGTTATGTGCAGAAGCAGCCGGCACCACATTCCACAGAATGAGCCCTGAGGAGGTCTCTG
 CACACGATGCCTAATTTCAAAGAGAGCAATACACCAAAAATAGATCACTGCTCTTCTCCCTCAAGTTC
 TGAGGACTCTGGGATCAATGCGATTGGGGCTCACTATGTGGAATCGTGTGACGAGGACACAGAAGAAGGA
 GCAGAACTGAGTTCAGAGGAAGATTACAGTCCAGAGAGCAGCTGGGAACCGGATGAGTGCACCCTTCTCT
 CCCCTCGCAGTCTGACCTGGAAGTATTGAAACGATAGAAACGACTGTG

ACGCGTACGCGGCCGCTCGAG - GFP Tag - GTTTAA

Protein Sequence: >RG222641 representing NM_001025266
 Red=Cloning site Green=Tags(s)

MSAAASPASERGWKSEKLDEAQLARSCAARRPDFQPCDGLSICATHSHGKCFKLHWCCHLGWCHCKYMY
 QPMTPEQLPSTEIPARPREPTNTIQISVSLTEHFLKFASVFQPPLPPDSPRYCMI SDFIDNYQVKCIN
 GKMCYVQKQAPAPHSRMSPEEVSADHALISKESNTPKIDHCSSPSSSEDSGINAIGAHYVESCEDETEEG
 AELSSEEDYSPESSWEPDECTLLSPSQSDLEVIETIETTV

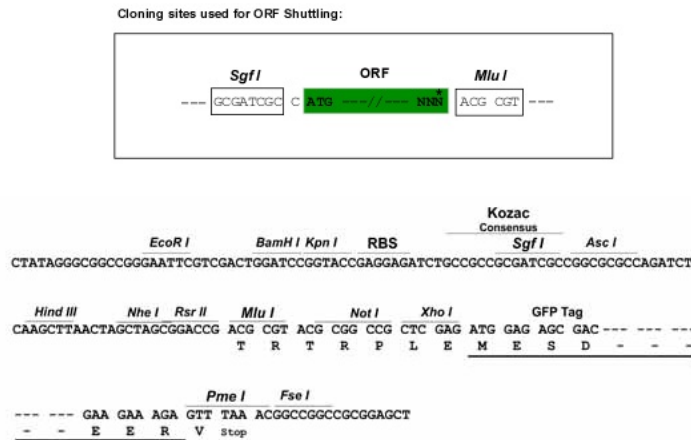
TRTRPLE - GFP Tag - V



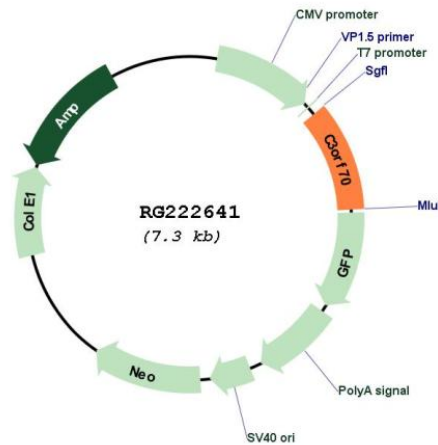
[View online »](#)

Restriction Sites: SgfI-MluI

Cloning Scheme:



Plasmid Map:



ACCN: NM_001025266

ORF Size: 750 bp

OTI Disclaimer: The molecular sequence of this clone aligns with the gene accession number as a point of reference only. However, individual transcript sequences of the same gene can differ through naturally occurring variations (e.g. polymorphisms), each with its own valid existence. This clone is substantially in agreement with the reference, but a complete review of all prevailing variants is recommended prior to use. [More info](#)

OTI Annotation: This clone was engineered to express the complete ORF with an expression tag. Expression varies depending on the nature of the gene.

Components:	The ORF clone is ion-exchange column purified and shipped in a 2D barcoded Matrix tube containing 10ug of transfection-ready, dried plasmid DNA (reconstitute with 100 ul of water).
Reconstitution Method:	<ol style="list-style-type: none">1. Centrifuge at 5,000xg for 5min.2. Carefully open the tube and add 100ul of sterile water to dissolve the DNA.3. Close the tube and incubate for 10 minutes at room temperature.4. Briefly vortex the tube and then do a quick spin (less than 5000xg) to concentrate the liquid at the bottom.5. Store the suspended plasmid at -20°C. The DNA is stable for at least one year from date of shipping when stored at -20°C.
RefSeq:	<u>NM_001025266.3</u>
RefSeq Size:	5901 bp
RefSeq ORF:	753 bp
Locus ID:	285382
UniProt ID:	<u>A6NLC5</u>
Cytogenetics:	3q27.2
Gene Summary:	May play a role in neuronal and neurobehavioral development.[UniProtKB/Swiss-Prot Function]