



**Protein Sequence:** >RG222640 representing NM\_001007595  
 Red=Cloning site Green=Tags(s)

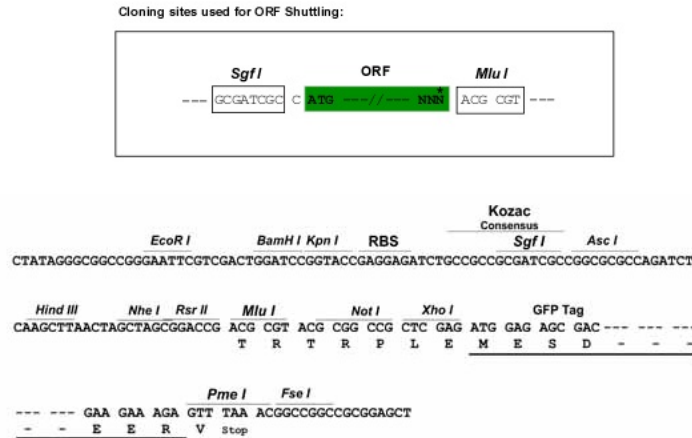
MRLLEKLCSSAAGSSAPKPAFAKVLTPNRIPEFCIPRLLPAPCTLESPIRAAAVPRRCAAESDLWPRAAD  
 EDAGRTDWDPRSQAALSLPHLPRVRTTYGFCALLESPHTRRKESSLLGGPPAPRRAHSCGGGGPDAPL  
 GTLCGPRGPGPATPAAPGGPRLPQDALAAGPRRCRLLRVPDGLLSRALRAGRSRRLARVRSVSSGNEDEE  
 RRAGESPARAPSSSPLSSRAPLPERLEAKGTVALGRAGDALRLAAEYCPGTRRLRLRLRAESLVGGAP  
 GPRAVRCRLSLVLRPPGTARWQCSAVVGRSRKASFDQDFCFDGLSEDEVRRRLAVRVKARDEGRDRGRLL  
 LGQGELSLGALLLL

TRTRPLE - GFP Tag - V

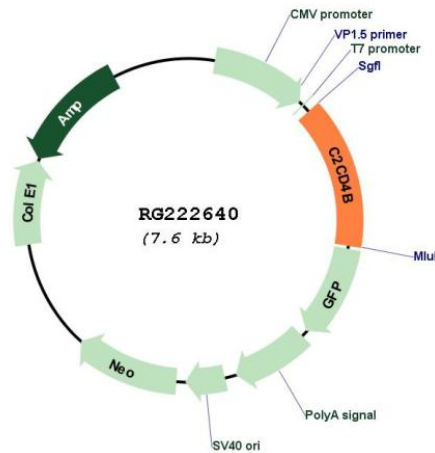
**Restriction Sites:**

SgfI-MluI

**Cloning Scheme:**



**Plasmid Map:**



**ACCN:**

NM\_001007595

<b>ORF Size:</b>	1092 bp
<b>OTI Disclaimer:</b>	The molecular sequence of this clone aligns with the gene accession number as a point of reference only. However, individual transcript sequences of the same gene can differ through naturally occurring variations (e.g. polymorphisms), each with its own valid existence. This clone is substantially in agreement with the reference, but a complete review of all prevailing variants is recommended prior to use. <a href="#">More info</a>
<b>OTI Annotation:</b>	This clone was engineered to express the complete ORF with an expression tag. Expression varies depending on the nature of the gene.
<b>Components:</b>	The ORF clone is ion-exchange column purified and shipped in a 2D barcoded Matrix tube containing 10ug of transfection-ready, dried plasmid DNA (reconstitute with 100 ul of water).
<b>Reconstitution Method:</b>	<ol style="list-style-type: none"><li>1. Centrifuge at 5,000xg for 5min.</li><li>2. Carefully open the tube and add 100ul of sterile water to dissolve the DNA.</li><li>3. Close the tube and incubate for 10 minutes at room temperature.</li><li>4. Briefly vortex the tube and then do a quick spin (less than 5000xg) to concentrate the liquid at the bottom.</li><li>5. Store the suspended plasmid at -20°C. The DNA is stable for at least one year from date of shipping when stored at -20°C.</li></ol>
<b>RefSeq:</b>	<a href="#">NM_001007595.1</a> , <a href="#">NP_001007596.1</a>
<b>RefSeq Size:</b>	1329 bp
<b>RefSeq ORF:</b>	1095 bp
<b>Locus ID:</b>	388125
<b>UniProt ID:</b>	<a href="#">A6NLJ0</a>
<b>Cytogenetics:</b>	15q22.2
<b>Gene Summary:</b>	May be involved in inflammatory process. May regulate cell architecture and adhesion. [UniProtKB/Swiss-Prot Function]