

Product datasheet for **RG222636**

SON (NM_032195) Human Tagged ORF Clone

Product data:

Product Type:	Expression Plasmids
Product Name:	SON (NM_032195) Human Tagged ORF Clone
Tag:	TurboGFP
Symbol:	SON
Synonyms:	BASS1; C21orf50; DBP-5; NREBP; SON3; TOKIMS
Mammalian Cell Selection:	Neomycin
Vector:	pCMV6-AC-GFP (PS100010)
E. coli Selection:	Ampicillin (100 ug/mL)
ORF Nucleotide Sequence:	>RG222636 representing NM_032195 Red=Cloning site Blue=ORF Green=Tags(s)

TTTTGTAATACGACTCACTATAGGGCGGCCGGAATTCGTCGACTGGATCCGGTACCGAGGAGATCTGCC
GCC**CGATCGCC**

ATGGCGACCAACATCGAGCAGATTTTTAGGTCTTTCGTGGTCAGTAAATCCGGGAAATCAACAGGAGC
TTTCCAGTGGAAGGAATGAAGGCCAGCTGAATGGTGAACAAATACCCATTGAAGGAAACCAGGCGGG
TGATGCAGCTGCCTCTGCCAGGAGTCTACCAAATGAAGAAATAGTGCAGAAGATAGAGGAAGTACTTTCT
GGGTCTTAGATACAGAACTACGATATAAGCCAGACTTGAAGAGGGCTCCAGAAAAAGTAGATGCGTAT
CTGTACAAACAGATCCTACTGATGAAATCCCCTAAAAAGTCAAAGAAGCATAAAAAGCACAAAAACAA
AAAGAAGAAAAAGAAAGAAAAGGAAAAAAATATAAAAGACAGCCAGAAGAACTCTGAGTCAAAGACG
AAATCTCATGATGATGGGAACATAGATTTAGAATCTGATTCCTTTTTAAAGTTTATTCTGAACCTTCAG
CTGTGGCGCTGGAGCTTCTACAAGAGCATTTGGCCATCTGAGACCAATGAATCCCCTGCGATTGTGCT
AGAACCTCCTGTAGTATCAATGGAGGTATCAGAGCCACACATCTAGAACTCTGAAGCCAGCTACAAAA
ACTGCAGAACTGTGAGTGTATCTACATCAGTAATCTCAGAGCAGTCAGAGCAGTCTGTGGCAGTAAATGC
CAGAACCATCCATGACAAAGATTCTGGATTCTTTGCAGCAGCACCAGTGCCTACTACAACACTGGTGT
GAAGTCATCTGAGCCAGTTGTAACAATGTCAGTGGAGTATCAGATGAAGTCTGTGCTGAAATCTGTGGAG
AGCACATCTCAGAGCCATCAAAGATCATGTTGGTAGAGCCCCAGTAGCAAAAAGTGTAGAGCCCTTTCAG
AAACCCTTGTGGTATCATCAGAGACACCTACTGAGGTGTACCCTGAGCCAAGCACATCAACAACAATGGA
TTTTCCAGAGTCACTGCAATTGAAGCGCTAAGATTGCCAGAGCAGCCTGTAGACGTACCATCGGAGATT
GCAGATTCATCCATGACAAGACCGCAGGAGTTGCCGGAGCTGCCTAAGACCACAGCGTTGGAGCTGCAGG
AGTCGTCGGTGGCCTCAGCGATGGAGTTGCCGGGGCCACCTGCGACCTCCATGCCGGAGTTGCAGGGGCC
CCCTGTGACTCCAGTGTGGAGTTACCTGGGCCCTCTGCTACCCCGTGCAGAGTTGCCAGGGCCCTT
TCTACCCAGTGCCTGAGTTGCCAGGGCCCTGCGACAGCAGTGCCTGAGTTGCCAGGGCCCTCTGTGA
CACCAGTGCCACAGTTGTCGAGGAATTGCCAGGGCTTCCAGCACCATCCATGGGGTTGGAGCCACCACA
GGAGGTACCAGAGCCACCTGTGATGGCACAGGAGTTGCCAGGGCTGCCTTTGGTACAGCAGCAGTAGAG



[View online »](#)

TTGCCAGAGCAGCCTGCGGTAACAGTAGCAATGGAGTTGACCGAACAACTGTGACGACGACAGAGTTGG
 AGCAGCCTGTGGGGATGACAACGGTGAACATCCTGGGCATCCTGAGGTGACAACGGCAACAGGGTTGCT
 GGGGCAGCCTGAGGCAACGATGGTGTGGAGTTGCCAGGACAGCCAGTGGCAACGACAGCGCTGGAGTTG
 CCGGGGCAGCCTTCGGTGACTGGGGTCCAGAGTTGCCAGGGTGCCTTCGGCAACTAGGGCACTGGAGT
 TGTCCGGGCAGCCTGTGGCAACTGGGGCACTAGAGTTGCCTGGCCGCTCATGGCAGCTGGGGCACTGGA
 GTTCTCGGGCAGTCTGGGGCAGCTGGAGCACTGGAGCTTTTGGGGCAGCCTCTGGCAACAGGGGTGCTG
 GAGTTGCCAGGGCAGCCTGGGGCCAGAGTTGCCTGGGCAGCCTGTGGCAACTGTGGCGCTGGAGATCT
 CTGTTTCAGTCTGTGGTGACAACATCGGAGCTGTCAACGATGACCGTGTGCGAGTCCCTGGAGGTGCCCTC
 GACGACAGCGCTGGAATCCTATAATACGGTAGCACAGGAGCTGCCTACTACATTAGTGGGGGAGACTTCT
 GTAACAGTAGGAGTGGATCCCTTGATGGCCCCAGAATCCCATATATTAGCTTCTAACACCATGGAGACCC
 ATATATTAGCATCCAACACCATGGACTCCCAAATGCTAGCGTCCAACACCATGGACTCCCAGATGCTAGC
 ATCCAACACCATGGACTCCCAGATGTTAGCGTCTAGCACCATGGACTCCCAGATGTTAGCAACTAGCTCC
 ATGGACTCCCAGATGTTAGCAACTAGCTCCATGGACTCCCAGATGTTAGCAACTAGCACTATGGACTCCC
 AGATGTTAGCAACAGTCCATGGACTCCCAGATGTTAGCAACCAGCTCCATGGACTCCCAGATGTTAGC
 AACAGCTCCATGGACTCCCAGATGTTAGCAACCAGCTCCATGGACTCCCAGATGTTAGCAACCAGCACC
 ATGGATTCTCAGATGTTAGCAACCAGCACCATGGACTCCCAGATGTTAGCAACTAGCTCAATGGATTCCC
 AGATGTTAGCATCTGGCACTATGGACTCTCAAATGTTAGCTTCTGGCACCATGGATGCTCAGATGTTAGC
 GTCTGGTACCATGGATGCCAGATGTTAGCGTCTAGTACCCAAGATTCTGCTATGTTGGGTTCAAATCT
 CCTGATCCCTATAGGTTAGCTCAGGATCCTTACAGGTTAGCTCAGGATCCCTATAGGTTGGGCCATGACC
 CCTATAGATTAGGTATGATGCTTACAGGTTAGGACAAGACCCTTATAGATTAGGCCATGATCCCTACAG
 ACTAATCCTGATCCCTATAGGATGTACCTAGACCCTACAGGATAGCACCAGGTCCTATAGAATAGCA
 CCCAGGCCATATAGGTTAGCACCTAGACCCTGATGTTAGCATCTAGACGTTCTATGATGATGTCCTATG
 TGCAGAACGTTCCATGATGTCATCTTACGAACGCTCTATGATGTCCTTATGAGCGGTCTATGATGCCCC
 TATGGCTGAACGCTCTATGATGTACGCTACGAGCGCTCTATGATGTACGCTACGAGCGCTCTATGATG
 TCCCCTATGGCTGAGCGCTCTATGATGTACGCTTATGAACGCTCCATGATGTACGCTTATGAACGCTCCA
 TGATGTCCCCAATGGCTGATCGATCTATGATGTCCATGGGTGCTGACCGTCTATGATGTGCTCATACTC
 TGCTGCTGACCGTCTATGATGTACGCTACTCTGACGCTGACCGATCTATGATGTACGCTTATACTGCT
 GATCGTTCAATGATGTCTATGGCTGCTGATTCTTACACCGATTCTTACACTGACACATATACAGAGGCAT
 ATATGGTGCCACCTTTCCTCCTGAAGAGCCCCAACAAATGCCACCGTTGCCACCTGAGGAGCCACCAAT
 GACACCACCATTCCTCCTGAGGAACCACCAGAGGGTCCAGCATTGCCACTGAGCAGTCAGCATTAAACA
 GCTGAAAATACTTGGCCTACAGAGGTGCCATCATCACCATCTGAAGAGTCTGTATCGCAGCCTGAGCCTC
 CTGTGAGTCAAAGTGAGATTTCCGAGCCTTCAGCAGTGCCTACTGATTATTCAGTGTGAGCATCAGATCC
 CTCAGTTTTAGTATCAGAGGCTGCTGTGACTGTTCCAGAACCACCACCAGAGCCAGAATCTTCAATTACG
 TTAACACCTGTAGAGTCTGCAGTAGTAGCAGAAGAACAATGAAGTTGTTCCAGAGAGACCAGTGAATTGTA
 TGGTATCTGAAACTCCCGCCATGTCAGCTGAACCAACTGTGTTAGCATCAGAGCCTCCTGTTATGTCAGA
 GACAGCAGAAACATTTGATTCCATGAGAGCCTCAGGACATGTTGCCTCAGAAGTATCTACATCCTTGTG
 GTTCCAGCAGTAACACTCCAGTGTGGCAGAGAGCATTCTGGAGCCGCCAGCCATGGCTGCCCCAGAGT
 CTTGACTATGGCTGCTGGAGTCTTCGGCTGTGACCGTCTGGAGTCTTCGACTGTGACTGTCCTGGA
 GTCTTCGACTGTAACGTGCTGGAGCCTTCGGTTGTGACTGTCCCGAGCCTCCTGTTGTGGCTGAGCCA
 GACTATGTTACCATTCTGTGCCAGTTGTTCTGCGCTGGAGCCTTCTGTGCCTGTTCTGGAACCGCGG
 TGTGAGTCTTCAACCTCTATGATTGTTTCAGAACCATCTGTTTCTGTCCAGGAATCGACTGTGACAGT
 TTCAGAGCCTGCTGTCACAGTCTCAGAGCAGACTCAAGTAATACCAACTGAGGTGGCTATAGAGTCCACA
 CCAATGATACTGGAATCTAGTATCATGTCATCACATGTTATGAAAGGAATTAATCTATCCTCTGGTGATC
 AAAATCTGCTCCAGAGATTGGCATGCAGGAGATTGCATTGCATTGAGTGAAGAACCACATGCTGAGGA
 ACACCTGAAAGGTGACTTTTACGAAAGTGAACATGGTATAAATATAGACCTTAATATAAATAATCATTTA
 ATTGCTAAAGAGATGGAACATAACAGTGTGTGCTGCTGGTACTAGTCTGTTGGGGAAATTTGGTGAAG
 AGAAAATTTTGGCCACCAGTGGAGTAAACAGCGCACAGTATTGGATACCTACCCTGGTGTAGTGAAGC
 TGATGCAGGAGAACTCTATCTTACTGGTCTTTTGTCTGGAACCTGATGCAACAGGAACTAGTAAG
 GGTATTGAATTTACCACAGCATCTACTCTCAGTTAGTTAATAAATATGATGTTGATTTATCTTTAACTA
 CTCAAGATACTGAACATGACATGGTAATTTCCACCAGTCTAGTGGTGGTGAAGCTGACATTGAAGG
 GCCTTTGCTGCTAAAGATATTCATCTTGTATTTACCATCTAATAAATAACCTGTTAGTAAGGATACAGAA
 GAACCATACCTGTAAGAGAGAGTGACCAGACATTAGCAGCTCTGCTCAGCCCTAAAGAAAGTAGTGGAG

GAGAAAAAGAAGTACCTCCCCCTCTAAAGAGACTGCCTGATTTCAGGATTTTCTGCCAATATTGAGGA
TATTAATGAAGCAGATTTAGTGAGACCGTTACTTCCTAAGGACATGGAACGTCTTACAAGCCTTAGAGCT
GGCATTGAAGGACCTTTACTTGCAGTGATGTTGGACGTGACAGATCTGCTGCCAGCCCGGTTGTAAGTA
GTATGCCAGAAAGAGCTTCAGAGTCTTCTCAGAGGAAAAAGATGATTATGAAATTTTTGTAAAAGTTAA
GGACTCACGAAAAAGCAAGAAAAAAGAACCCTGATAAGGGGGAGAAAGAGAAGAAAAAGAGACTCT
TCATTAAGATCTCGAAGTAAGCGTTCCTCAATCTTCTGAACACAAATCACGCAAGCGTACCAGTGAATCTC
GTTCTAGGGCAAGAAAGAGATCATCTAAGTCCAAGTCTCATCGCTCTCAGACACGTTACCGGTCAGTTT
AAGACGCAGGAGGAGAAGCAGCAGATCAAGATCAAAGTCTAGAGGAAGAAGATCTGTATCAAAAAGAGAAG
CGCAAAAGATCTCCAAAGCACAGATCCAAGTCTAGGGAAAAGAAAAAGAAAAAGATCAAGTCCAGGGATA
ACCGAAAGACAGTTAGAGCTCGAAGTCGAACCCCAAGTCGTCGGAGTCGGAGTCATACTCCAAGTCGTCG
ACGAAGGCTAGATCTGTGGGTAGAAGAAGGAGCTTTAGCATTTCCTCAAGCCGCGCAGCCGCACCCCC
AGCCGCGCAGCCGCACCCCCAGCCGCGCAGCCGCACCCCCAGCCGCGCAGCCGCACCCCCAGCCGCGC
GGAGCCGCACCCCTAGCCGTCGGAGCCGCACCCCAAGCCGCGGAGAAGATCAAGGTCGTGGTAAGAAG
ACGAAGCTTCAGTATCTCACCAGTCAGATTAAGGCGATCAAGAACACCCTTAAGAAGAAGGTTTAGCAGA
TCTCCCATCCGTCGTAAGATCCAGGCTTCTGAACGAGGCAGATCACCCAAACGTCGTACAGATTTGG
ATAAGGCTCAATTAAGTAAAGTAAAGCTAATGCAGCTGCCATGTGTGCTAAGGCTGGTGTCCCTTT
ACCACCAAACCTAAAGCCTGCACCTCCACCTACTATAGAAGAGAAAGTTGCTAAAAAGTCAGGAGGAGCT
ACTATAGAAGAACTAACTGAGAAATGTAACAGATCGCACAGAGTAAAGAAGATGATGATGTAATAGTGA
ATAAACCTCATGTTTCGGATGAAGAGGAAGAAGAACCTCCTTTTTATCATCATCCCTTTAAACTCAGTGA
ACCCAAACCTATTTTTTCAATCTGAATATTGCTGCAGCAAAACCACTCCACCAAAAAGCCAGGTAACA
TTAACAAAAGAATTCCCTGTATCATCTGGATCTCAACATCGGAAAAAAGAAGCGGATAGTGTATGGAG
AATGGGTTCTGTGGAGAAAAATGGTGAAGAAAACAAAGATGATGATAATGTTTTTCAGCAGCAATTTGCC
CTCAGAGGGCCGGTTAAACGGCAGGGCCGGTTAGACGACAGATGAAACAACCCGAGCTTCTCATTG
ACAGTAACCTCGATGCAATTCATTTGTGGAACCAAGCCACAAAGTAAAAAGCATCGAATTGCAGAGAACA
GTGTTATCACATCCCTACCCAACATTGGGCCCTCCTGCACCTTGTGGAAAGGTAGTCCAAGGTACAATA
TTAGCTTCCCGATTTGCTTCAAGGCTCTATAGCTCTAGATTTTGGTGG

ACGCGTACGCGGCCGCTCGAG – GFP Tag – GTTTAA

Protein Sequence: >RG222636 representing NM_032195
Red=Cloning site Green=Tags(s)

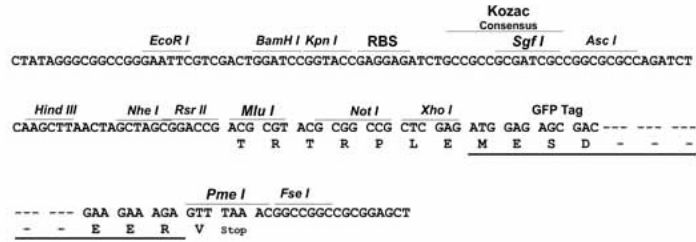
MATNIEQIFRSFVVSKFREIQQELSSGRNEGQLNGETNPTIEGNQAGDAAASARSLPNEEIVQKIEEVL
 GVLDELRYKPDLEKESRKSRCVSVQTDPTDEIPTKSKKHKHKHKKHKKHKKKEKKYKRPPEESESKT
 KSHDDGNIDLESDFLKFDEPSAVALPTRAFFGPSETNESPAVVLEPPVVSMEVSEPHILETLKPKATK
 TAELSVVSTSVISEQSEQSVAVMPEPSMTKILDSFAAAPVPTTTLVLKSSPEVVTMSVEYQMKSVLKSV
 STSPEPSKIMLVEPPVAKVLEPSETLVVSETPTVEVYEPSTSTTMDFPESAIERALPEQPVDVPEI
 ADSSMTRPQELPELPKTTALELQESSVASAMELPGPPATSMPELQGPVTPVLELPGPSATVPPELPGPL
 STVPPELPGPPATAVPELPGPSVTPVPQLSQELPGLPAPSMGLEPPQEVPEPPVMAQELPGLPLVTA
 AVE LPEQPAVTVAMEL TEQPVTTELEQPVGM TTV EHPGHPEVTTATG LLGQPEATMVLELPGQPVATTALEL
 PGQPSVTGVPPELPGPSATRALEL SGQPVATGALELPGPLMAAGALEFSGQSGAAGALELLGQPLATGVL
 ELPGQPGAPELPGQPVATVALEISVQSVVTTSELSTMTVSQSLEVPSTTALESYNTVAQELPTTLVGETS
 VTVGVDP LMAPESHILASNTMETHILASNTMDSQMLASNTMDSQMLASNTMDSQMLASNTMDSQMLATSS
 MDSQMLATSSMDSQMLATSTMDSQMLATSSMDSQMLATSSMDSQMLATSSMDSQMLATSSMDSQMLATST
 MDSQMLATSTMDSQMLATSSMDSQMLASGTMDQMLASGTMDAQMLASGTMDAQMLASSTQDSAMLGSKS
 PDPYRLAQDPYRLAQDPYRLGHDPYRLGHDAYRLGQDPYRLGHDPYRLTPDPYRMSRPRYRIAPRSYRIA
 PRPYRLAPRPLMLASRRSMMSYAAERSMMSYERSMMSYERSMMSYERSMMSYERSMMSYERSMMSYERSMMS
 SPMAERSMMSYERSMMSYERSMMSYERSMMSYERSMMSYERSMMSYERSMMSYERSMMSYERSMMSYERSMMS
 DRSMMSMAADSYTDSYTDYTEAYMVPPLPEEPPTMPPLPEEPPTMPPLPEEPPEPALPTEQSALT
 AENTWPTEVPSSPSEESVSQPEPPVSQSEISEPSAVPTDYSVSADPSVLVSEAAVTVPPEPPESSIT
 LTPVESAVVAEEHEVVPERPVTMCMVSETPAMSAEPTVLAASEPPVMSETAETFDSMRASGHVASEVSTLL
 PAVTTPVLAESILEPPAMAPESSAMAVLESSAVTVLESSTVTVLESSTVTVLEPSVTVPEPPVVAEP
 DYYTIPVPVSALEPSVPVLEPAVSVLQPSMIVSEPSVSVQESTVTVSEPAVTVSEQTQVIPTEVAIEST
 PMILESSIMSSHVMKGINLSSGDQNLAPEIGMQEIALHSGEEPHAEHLKGFYSEHGINIDLNNHL
 IAKEMEHTVCAAGTSPVGEIGEEKILPTSETKQRTVLDTPGVSEADAGETLSSTGPFALP DATGTSK
 GIEFTTASTLSLVNKYD VDSLTTQDTEHDMVISTSPSGGSEADIEGPLPAKDIHLDLPSNNLVSKDTE
 EPLPVKESDQTLAALLSPKESGGGEKEVPPPKETLPDSGFSANIEDINEADLVRPLLPKDMERL TSLRA
 GIEGPLLASDVGRDRSAASPVVSSMPERASESSSEEKDDYEIFVKVKT HEKSKKNRDKGEKEKRD
 SLRSRKRKSKSSEHKSRKRTSESRSRARKRSSKSKSHRSQTRSRSRRRRRR SRSRKSRGRRSVSKEK
 RKRSPKHRKSRERKRKRSSSRDNRKTVRARSRTPSRRRSRSHTPSRRRRSR SVGRRRSFSISPSRRSRT
 SRRSRTPSRRSRTPSRRSRTPSRRSRTPSRRSRTPSRRRSR SVRRRSFSISPVRLRRSRTPLRRRF SR
 SPIRRKR SRSSERGRSPKRLTDLKAQLEIAKANAAAMCAKAGVPLPPNLKPAPPPTIEEKVAKKSGGA
 TIEELTEKCKQIAQSKEDDDVIVNKP HVSDEEEEEPPFYHHPFKLSEPKPIFFNLNIAAAKPTPPKSQVT
 LTKEFPVSSGSQHRKKEADSVYGEWVPEKNGEENKDDDNVFSNLPSEGRVKRQGRVRRQMKQPAASHL
 TVTRCNLSL CGTKPQSEKHRIAENSVITSLPNIGPSLHLWEGSPRYNYLASRFASRLYSSRFWW

TRTRPLE - GFP Tag - V

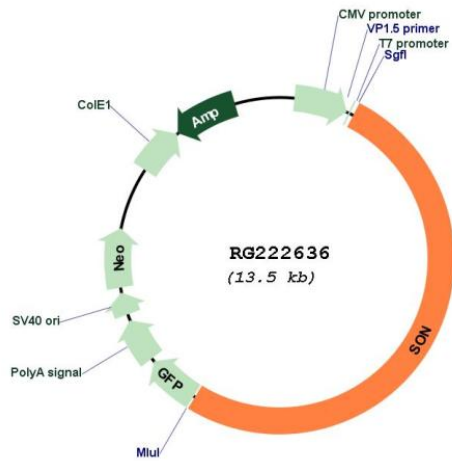
Restriction Sites: Sgfl-MluI

Cloning Scheme:

Cloning sites used for ORF Shutting:



Plasmid Map:



ACCN: NM_032195
 ORF Size: 6909 bp

OTI Disclaimer:	<p>Due to the inherent nature of this plasmid, standard methods to replicate additional amounts of DNA in E. coli are highly likely to result in mutations and/or rearrangements. Therefore, OriGene does not guarantee the capability to replicate this plasmid DNA. Additional amounts of DNA can be purchased from OriGene with batch-specific, full-sequence verification at a reduced cost. Please contact our customer care team at custsupport@origene.com or by calling 301.340.3188 option 3 for pricing and delivery.</p> <p>The molecular sequence of this clone aligns with the gene accession number as a point of reference only. However, individual transcript sequences of the same gene can differ through naturally occurring variations (e.g. polymorphisms), each with its own valid existence. This clone is substantially in agreement with the reference, but a complete review of all prevailing variants is recommended prior to use. More info</p>
OTI Annotation:	<p>This clone was engineered to express the complete ORF with an expression tag. Expression varies depending on the nature of the gene.</p>
Components:	<p>The ORF clone is ion-exchange column purified and shipped in a 2D barcoded Matrix tube containing 10ug of transfection-ready, dried plasmid DNA (reconstitute with 100 ul of water).</p>
Reconstitution Method:	<ol style="list-style-type: none">1. Centrifuge at 5,000xg for 5min.2. Carefully open the tube and add 100ul of sterile water to dissolve the DNA.3. Close the tube and incubate for 10 minutes at room temperature.4. Briefly vortex the tube and then do a quick spin (less than 5000xg) to concentrate the liquid at the bottom.5. Store the suspended plasmid at -20°C. The DNA is stable for at least one year from date of shipping when stored at -20°C.
RefSeq:	NM_032195.3
RefSeq Size:	7497 bp
RefSeq ORF:	6912 bp
Locus ID:	6651
UniProt ID:	P18583
Cytogenetics:	21q22.11
Gene Summary:	<p>This gene encodes a protein that contains multiple simple repeats. The encoded protein binds RNA and promotes pre-mRNA splicing, particularly of transcripts with poor splice sites. The protein also recognizes a specific DNA sequence found in the human hepatitis B virus (HBV) and represses HBV core promoter activity. There is a pseudogene for this gene on chromosome 1. Alternative splicing results in multiple transcript variants. [provided by RefSeq, Jul 2013]</p>