

## Product datasheet for **RG222620**

### **NXF1 (NM\_001081491) Human Tagged ORF Clone**

#### Product data:

Product Type:	Expression Plasmids
Product Name:	NXF1 (NM_001081491) Human Tagged ORF Clone
Tag:	TurboGFP
Symbol:	NXF1
Synonyms:	MEX67; TAP
Mammalian Cell Selection:	Neomycin
Vector:	pCMV6-AC-GFP (PS100010)
E. coli Selection:	Ampicillin (100 ug/mL)
ORF Nucleotide Sequence:	>RG222620 representing NM_001081491 Red=Cloning site Blue=ORF Green=Tags(s)

TTTTGTAATACGACTCACTATAGGGCGGCCGGAATTCGTCGACTGGATCCGGTACCGAGGAGATCTGCC  
GCC**CGATCGCC**

ATGGCGGACGAGGGGAAGTCGTACAGCGAACACGATGATGAACGCGTTAATTTCCCTCAAAGAAAGAAGA  
AAGGCCGGGTCCCTTCCGGTGGAAATATGGTGAAGGAAACCGTAGGCTGGAAGAGGCGGTTCTGGTAT  
TCGGTCTCCCGCCTTGAGGAAGATGATGGAGATGTGGCAATGAGTGATGCCAGGATGGTCCCGAGTA  
CGATAACAACCCCTATACCACCCGACCTAACCGTCGGGGTGATACTGGCATGATCGATCGCATTTCATG  
TTACTGTGCGGAGAGACAGAGCTCCTCCAGAGAGAGGAGGGGCTGGCACCAGCCAGGATGGGACCTCAA  
GAAGTGGTTCAAGATTACAATTCCTTATGGCAGAAAGTATGACAAGGCATGGCTCCTGAGCATGATTTCAG  
AGCAAGTGCAGTGTGCCCTTACCCCTATTGAGTTTCACTATGAGAATACACGGGCCAGTTCTTCGTTG  
AAGACGCCAGTACTGCCTCTGCATTGAAGGCTGTCAACTATAAGATTTTGGATCGGGAGAACCGAAGGAT  
ATCTATCATCACTACTTCTGCTCCACCCACACTATACTGAATGAAGTGAAGCCAGAACAAGTAGAA  
CAGCTAAAGCTGATCATGAGCAAACGATACGATGGCTCCCAACAAGCCCTTGACCTCAAAGGCCCTCGTT  
CAGACCCAGATTTGGTGGCCAGAACATTGACGTTGTCTGAATCGCAGAAGCTGTATGGCAGCTACCT  
GAGGATCATTGAAGAGAACATCCCTGAGCTATTGTCCTTGAACCTGAGCAACAACAGGCTGTACAGGCTG  
GATGACATGTCTAGCATTGTTTGAAGGACCCCAACCTGAAGATCCTAAACCTTTCTGAAATGAATTGA  
AGTCTGAGCGGGAATTGGACAAGATAAAGGGGCTGAAGCTAGAAGAGCTCTGGCTCGATGGAACCTCCCT  
GTGTGACACCTTCCGAGACCAGTCCACCTACATCAGGTCAGTTGTAGCCTGTGTCTCCCTCCTGGGGAC  
CTTCAACCCCTGGGAGGC

AC**GGGCCGCT**CGAG - GFP Tag - GTTTAA



[View online »](#)

**Protein Sequence:** >RG222620 representing NM\_001081491  
 Red=Cloning site Green=Tags(s)

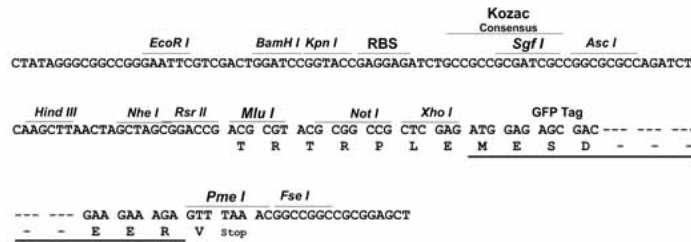
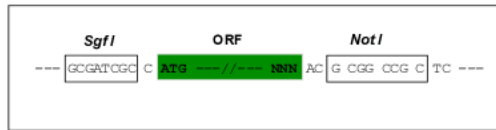
MADEGKSYSEHDDERVNFPQRKKKGRGPFWRKYGEGNRRSGRGGSGIRSSRLEEDDGDVAMSDAQDGPV  
 RYNPYTTRPNRRGDTWHRDRIHVTVRRDRAPPERGGAGTSQDGTSKNWFKITIPYGRKYDKAWLLSMIQ  
 SKCSVPFTPIEFHYENTRAQFFVEDASTASALKAVNYKILDRENRRISIIINSSAPPHTILNELKPEQVE  
 QLKLIIMSKRYDGSQQALDLKGLRSDPDLVAQNIDVVLNRRSCMAATLRIIEENIPELLSLNLNNRLYLRL  
 DDMSSIVQKAPNLKILNLSGNELKSERELDKIKGLKLEELWLDGNSLCDTFRDQSTYIRSVMVACVSPPGD  
 LHPLGG

TRPLE - GFP Tag - V

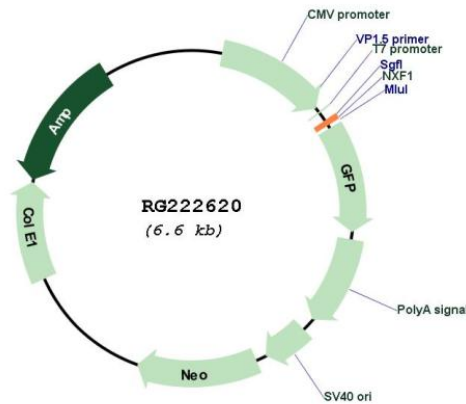
**Restriction Sites:** SgfI-NotI

**Cloning Scheme:**

Cloning sites used for ORF Shuttling:



**Plasmid Map:**



**ACCN:** NM\_001081491

<b>ORF Size:</b>	1068 bp
<b>OTI Disclaimer:</b>	The molecular sequence of this clone aligns with the gene accession number as a point of reference only. However, individual transcript sequences of the same gene can differ through naturally occurring variations (e.g. polymorphisms), each with its own valid existence. This clone is substantially in agreement with the reference, but a complete review of all prevailing variants is recommended prior to use. <a href="#">More info</a>
<b>OTI Annotation:</b>	This clone was engineered to express the complete ORF with an expression tag. Expression varies depending on the nature of the gene.
<b>Components:</b>	The ORF clone is ion-exchange column purified and shipped in a 2D barcoded Matrix tube containing 10ug of transfection-ready, dried plasmid DNA (reconstitute with 100 ul of water).
<b>Reconstitution Method:</b>	<ol style="list-style-type: none"><li>1. Centrifuge at 5,000xg for 5min.</li><li>2. Carefully open the tube and add 100ul of sterile water to dissolve the DNA.</li><li>3. Close the tube and incubate for 10 minutes at room temperature.</li><li>4. Briefly vortex the tube and then do a quick spin (less than 5000xg) to concentrate the liquid at the bottom.</li><li>5. Store the suspended plasmid at -20°C. The DNA is stable for at least one year from date of shipping when stored at -20°C.</li></ol>
<b>RefSeq:</b>	<a href="#">NM_001081491.2</a>
<b>RefSeq Size:</b>	4147 bp
<b>RefSeq ORF:</b>	1071 bp
<b>Locus ID:</b>	10482
<b>UniProt ID:</b>	<a href="#">Q9UBU9</a>
<b>Cytogenetics:</b>	11q12.3
<b>MW:</b>	40.5 kDa
<b>Gene Summary:</b>	This gene is one member of a family of nuclear RNA export factor genes. Common domain features of this family are a noncanonical RNP-type RNA-binding domain (RBD), 4 leucine-rich repeats (LRRs), a nuclear transport factor 2 (NTF2)-like domain that allows heterodimerization with NTF2-related export protein-1 (NXT1), and a ubiquitin-associated domain that mediates interactions with nucleoporins. The LRRs and NTF2-like domains are required for export activity. Alternative splicing seems to be a common mechanism in this gene family. The encoded protein of this gene shuttles between the nucleus and the cytoplasm and binds in vivo to poly(A) <sup>+</sup> RNA. It is the vertebrate homologue of the yeast protein Mex67p. The encoded protein overcomes the mRNA export block caused by the presence of saturating amounts of CTE (constitutive transport element) RNA of type D retroviruses. Alternative splicing results in multiple transcript variants. [provided by RefSeq, Jul 2008]