

Product datasheet for **RG222598**

ARVCF (NM_001670) Human Tagged ORF Clone

Product data:

Product Type:	Expression Plasmids
Product Name:	ARVCF (NM_001670) Human Tagged ORF Clone
Tag:	TurboGFP
Symbol:	ARVCF
Mammalian Cell Selection:	Neomycin
Vector:	pCMV6-AC-GFP (PS100010)
E. coli Selection:	Ampicillin (100 ug/mL)



[View online »](#)

ORF Nucleotide Sequence:

>RG222598 representing NM_001670
 Red=Cloning site Blue=ORF Green=Tags(s)

TTTTGTAATACGACTCACTATAGGGCGGCCGGAATTCGTCGACTGGATCCGGTACCGAGGAGATCTGCC
 GCC**CGGATCGCC**

ATGGAGGACTGCAATGTGCACTCGGCCGCCAGCATCTGGCCTCGGTGAAGGAGCAGGAGGCCCGCTTCG
 AGAGGCTGACACGGGCACTGGAGCAGGAGCGGCCATGTTGCCCTACAGCTGGAGCGTGCCAGCAGCC
 TGGCATGGTCAGTGGTGGCATGGCAGTGGCAGCCCTGCCAATGGCCTGGCAACAGCTGGTCTCCAG
 GAGCAGAGCCAGGCAGCCAGGCCTCACTGGCCACGATGCCGAGGCACCTGATGTGCTGGAGGAGACCG
 TGACGGTGGAGGAGACCCCGGCACACCACCTTCCCATGTGTCTATTGTACATCCGAAGATGGCACAAC
 CCGGGCCACCGAGACCAAGGTACCAAGACTGTCAAGACGGTACCCTCGGACAGTACGCCAGGTGCC
 GTGGGCCAGATGGACTCCCTGCTGGATGGCGGCCCCCACTAGGCCCTTTTGCAGATGGTGCCTGG
 ACCGGCATTCTGCTGCGTGGTGGCCAGTGGCCACTCTCGAGCCTACCTCAGCAGTGGGGG
 TGGCTTTCCCGAAGGCCCGAGCCCGGGACAGCCAGCTATGGCAGCCTGTCGAGGGCTGGGCATG
 CGGCCCCACGTGCTGGCCCTTGGCCAGGCCCTGGTATGGCTGCTTACACTGCCTGGCCACCGGG
 AAGCCTTCCCGGTGGTCTGAGCCTGGGCCACAGGTGGCCGCTCCCTGCCGAGCGCTTCCAGGCAGA
 GCCGATGGCTTGGAGGATGACACGCGCAGCCTGGCCGCTGATGACGAGGGTGGCCCTGAGCTGGAGCCT
 GACTATGGCAGGCCACAAGGAGGAGGCCTGAGTGTGGCGGGCCCTTACACCAGGGCTACGAGGACA
 CAGCAGATGATGGCGGCGAGTGGCGGACGAGCGGCCCTGCGTTCCCAATGGTACGCGGCCCTGGCCCA
 GCCTGAACGGGGCAGCATGGCAGCCTGGACCGGCTGGTGGCGGCTCGCCCTCAGTGGATAGCGCCCG
 AAGGACCGCGCTGGCGGGACCTGAGCTGCCTGAGGTGCTGGCCATGCTGGCCACCCCGTGGACCCCG
 TGAAGGCCAATGCGGCCCTACCTGCAGCATCTGTGCTTTGAGAACGAGGGTGTCAAGCGCGTGTACG
 GCAGTTGCGGGGGCTGCCGCTGCTTGTGGCACTGCTGGACCACCCGCGGGCTGAGGTGCGCGCCGGCC
 TGTGGGCACTGCGCAACCTCTCTATGGCCGCGACACTGACAACAAGGCCGCCATCCGGGACTGCGGTG
 GTGTGCCTGCCCTGGTGCCTGCTGAGGGCTGCCCGGACAACGAGGTCCGTGAGCTTGTCACTGGCAC
 CCTGTGGAACCTGTCATCCTATGAGCCCTGAAGATGGTCACTATTGACCATGGCCTGCAGACGCTGACC
 CACGAGGTGATCGTGCCCACTCAGGATGGGAGCGTGGCCCAACGAGGACTCCAAGCCACGGGACGCCG
 AGTGGACAACCTCTTCAAGAACACGTGGGCTGCCTGAGGAATGTGAGCTCCGATGGTGTGAGGCCCG
 GCGGGACTCCGGGAGTGTGAAGGGCTGGTGGACGCGCTCCTGCATGCCCTGCAGTGGCTGTGGCCGG
 AAGGACTGACAACAAGTCGGTGGAGAACTGCGTGTGCATCATCGGAACCTGTCTACCAGTGCACA
 AGGAGGTGCCCGGGCCGACAGGTACCAGGAGGCCGAGCCCGGGCCCTGGGAGTGTGTAGGCTCCCA
 GCGCCGAGGCGGGATGATGCCAGCTGCTTGGAGGCAAGAAGGCCAAAGAGGAGTGGTCCACCAAGGA
 AAGAAGGATGGTGAAGTGGACCGGAACCTTGGACGCTAGACCTGCCAAGCGAACTGAGGCCGCCAAAG
 GCTTTGAGCTGTGTACCAGCCGAGGTGGTACGTCTCTACCTCTCCCTCCTCACGGAGACCGGAACTT
 CAACACCTGGAGGTGCCGCGGCGCTCTGCAGAACCTCAGTCCCGGCAACTGGATGTGGGCCACGTAC
 ATCCGCGCCACAGTGGCAAGAGCGGGGCTGCCGGTGTGTGGAACCTGCTGCAGTCTGAGACCGACA
 AGGTGGTGGCGCCGTCGCCATCGCTCTGCGCAACCTCTCGTGGACCGGCGCAACAAAGACCTCATCG
 GAGCTACGCCATGGCTGAGCTTGTGCGGAATGTGCGCAATGCACAGGCTCCGCGGACCCGGGGCCCTGC
 CTGGAGGAAGACACCGTGGTGGCGGTGCTAACACCATCCACGAAATCGTGTCCGACAGCCTGGATAACG
 CGCGCTCGCTCCTGCAGGCACGCGGGTGGCAGCGTGGTGGCTCTCGTGGCCTCCAGCCAATCGGTACG
 CGAAGCGAAGGCGGCGTACACGTGCTGCAGACAGTGTGGAGCTACAAGGAGCTGCGTGGTACCTTGCAG
 AAAGATGGTTGGACCAAGGCGGCTTCCAGTCACTGCTGCTACTGCCAAGGGCCCTAAGGGAGCACTGA
 GTCCTGGGGCTTCGATGACAGCAGCTGCCACTGGTGGACAAGACCTTGGGGCGAGAAAAGTGGCAG
 CCGGGATGTATCCCATGGATGCGCTGGGCCAGACGGATACTCCAGGTGGACCGGAGGGAGCGGAGG
 CCACGGGGCGCCAGCTCTGCAGGAGAGGCCTCTGAGAAGGAACCTTGAAGTGCACCCAGCAGGAAGG
 CCCCTCCCCCGGCCAGCAGGCCCGGCTCAGGCTGGTGGACCGCTAGGGGACGCTAAGCCTACGCC
 CGTTGATTCCTGGTC

ACGCGTACGCGGCCGCTCGAG - GFP Tag - GTTTAA

Protein Sequence: >RG222598 representing NM_001670
 Red=Cloning site Green=Tags(s)

MEDCNVHSAASILASVKEQEARFERLTRALEQERRHVALQLERAQQPMVSGGMGSGQPLPMAWQQLVLQ
 EQSPGQSASLATMPEAPDVLEETVTVEEDPGTPTSHVSIVTSEDGTTTTRTETKVTKTVKTVTTRTVRQVP
 VGPDGLPLLDGGPPLGPFADGALDRHFLLRGGGPVATLSRAYLSSGGGFPEGPEPRDSPSYGSLSRGLGM
 RPPRAGPLGPGPDGCF TLPGHREAFPVGPEPGPPGGRSLPERFQAEPYGLEDDTRSLAADEGGPELEP
 DYGTATRRRPECGRGLHTRAYEDTADDGGELADERPAFPMVTAPLAQPERGSMGSLDRLVRRSPSVDSAR
 KEPWRDPELPEVLAMLRHPVDPVKANAAAYLQHLCFENEGVKRRVRQLRGLPLLVALLDHPRAEVRRA
 CGALRNLSYGRDNDKAAIRDCCGGVPALVRLRAARDNEVRELVTGTLWNLSSYEPLKMWIIDHGLQTLT
 HEVIVPHSGWEREPNEDSKPRDAEWTTVFKNKSGCLRNVSDDGAEARRRLRECEGLVDALLHALQSAVGR
 KDTDNKSVENCVCIMRNLSYHVHKEVPGADRYQEAEPGPLGSVAVGSQRRRRDDASCFGGKAKEEWFHQG
 KKGEMDRNFDTLDLPKRTEAAKGFELL YQPEVVRLYL SLLTESRNFTLEAAAGALQNL SAGNWMWATY
 IRATVRKERGLPVL VELLQSETDKVVRVAIALRNLSLDRRNKDLIGSYAMAELVRNVRNAQAPPRGAC
 LEEDTVVAVLNTIHEIVSDSLDNARSLQARGVPALVALVASSQSVREAKAASHVLQTVWSYKELRGTLQ
 KDGWTKARFQSAATAKGPKGALSPGGFDDSTLPLVDKSLGEKGTGSRDVIIPMDALGPDGYSTVDRRERR
 PRGASSAGEASEKEPLKLDPSRKAPPPGSRPAVRLVDAVGDAPQPVDSWV

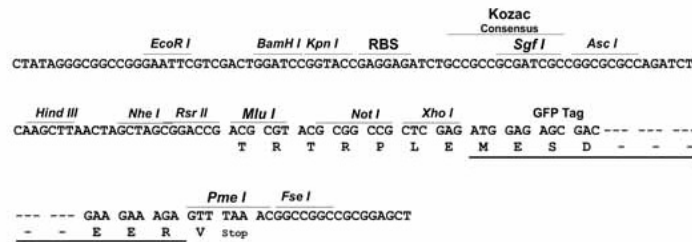
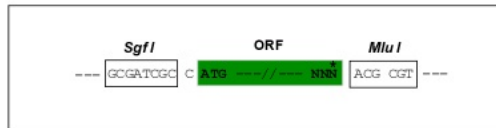
TRTRPLE - GFP Tag - V

Restriction Sites:

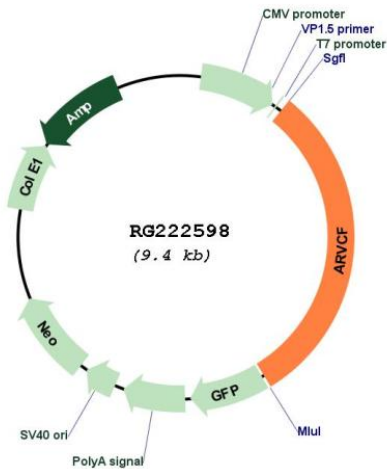
SgfI-MluI

Cloning Scheme:

Cloning sites used for ORF Shuttling:



Plasmid Map:



ACCN: NM_001670

ORF Size: 2886 bp

OTI Disclaimer: Due to the inherent nature of this plasmid, standard methods to replicate additional amounts of DNA in *E. coli* are highly likely to result in mutations and/or rearrangements. Therefore, OriGene does not guarantee the capability to replicate this plasmid DNA. Additional amounts of DNA can be purchased from OriGene with batch-specific, full-sequence verification at a reduced cost. Please contact our customer care team at custsupport@origene.com or by calling 301.340.3188 option 3 for pricing and delivery.

The molecular sequence of this clone aligns with the gene accession number as a point of reference only. However, individual transcript sequences of the same gene can differ through naturally occurring variations (e.g. polymorphisms), each with its own valid existence. This clone is substantially in agreement with the reference, but a complete review of all prevailing variants is recommended prior to use. [More info](#)

OTI Annotation: This clone was engineered to express the complete ORF with an expression tag. Expression varies depending on the nature of the gene.

Components: The ORF clone is ion-exchange column purified and shipped in a 2D barcoded Matrix tube containing 10ug of transfection-ready, dried plasmid DNA (reconstitute with 100 ul of water).

Reconstitution Method:

1. Centrifuge at 5,000xg for 5min.
2. Carefully open the tube and add 100ul of sterile water to dissolve the DNA.
3. Close the tube and incubate for 10 minutes at room temperature.
4. Briefly vortex the tube and then do a quick spin (less than 5000xg) to concentrate the liquid at the bottom.
5. Store the suspended plasmid at -20°C. The DNA is stable for at least one year from date of shipping when stored at -20°C.

RefSeq: [NM_001670.3](#)

RefSeq Size: 4056 bp

RefSeq ORF: 2889 bp

Locus ID: 421

UniProt ID: [O00192](#)

Cytogenetics: 22q11.21

Gene Summary: Armadillo Repeat gene deleted in Velo-Cardio-Facial syndrome (ARVCF) is a member of the catenin family. This family plays an important role in the formation of adherens junction complexes, which are thought to facilitate communication between the inside and outside environments of a cell. The ARVCF gene was isolated in the search for the genetic defect responsible for the autosomal dominant Velo-Cardio-Facial syndrome (VCFS), a relatively common human disorder with phenotypic features including cleft palate, conotruncal heart defects and facial dysmorphism. The ARVCF gene encodes a protein containing two motifs, a coiled coil domain in the N-terminus and a 10 armadillo repeat sequence in the midregion. Since these sequences can facilitate protein-protein interactions ARVCF is thought to function in a protein complex. In addition, ARVCF contains a predicted nuclear-targeting sequence suggesting that it may have a function as a nuclear protein. [provided by RefSeq, Jun 2010]