

## Product datasheet for **RG222497**

### MEIS2 (NM\_172316) Human Tagged ORF Clone

#### Product data:

**Product Type:** Expression Plasmids  
**Product Name:** MEIS2 (NM\_172316) Human Tagged ORF Clone  
**Tag:** TurboGFP  
**Symbol:** MEIS2  
**Synonyms:** CPCMR; HsT18361; MRG1  
**Mammalian Cell Selection:** Neomycin  
**Vector:** pCMV6-AC-GFP (PS100010)  
**E. coli Selection:** Ampicillin (100 ug/mL)  
**ORF Nucleotide Sequence:** >RG222497 representing NM\_172316  
 Red=Cloning site Blue=ORF Green=Tags(s)

TTTTGTAATACGACTCACTATAGGGCGGCCGGAATTCGTCGACTGGATCCGGTACCGAGGAGATCTGCC  
 GCC**CGATCGCC**

ATGGCTCTGGTCTTTGAGAAGTGCAGCTGGCGACCTGCACTCCCCGGGAACCTGGAGTGGCTGGCGGAG  
 ACGTCTGCTCCTCCGACTCCTTCAACGAGGACATCGCGGTCTTCGCCAAGCAGGTTTCGCGCCGAAAAGCC  
 ACTTTTTCTCAAATCCAGAGCTGGACAATTTGATGATACAAGCAATACAAGTACTAAGGTTTCATCTT  
 TTGGAGTTAGAAAAGTCCACGAACTGTGCGATAACTTCTGCCACCGATACATTAGCTGTTGAAGGGGA  
 AAATGCCCATCGACCTCGTCATTGATGAAAGAGACGGCAGCTCCAAGTCAGATCATGAAGAACTTTCAGG  
 CTCTCCACAAATCTCGCTGACCATAACCTTCTTCTTGGCGAGACCACGATGATGCAACCTCAACCCAC  
 TCAGCAGGCACCCAGGGCCCTCCAGTGGGGGCCATGCTTCCCAGAGCGGAGACAACAGCAGTGAGCAAG  
 GGGATGGTTTAGACAACAGTGTAGCTTACCTGGTACAGGTGACGATGATGATCCGGATAAGGACAAAAA  
 ACGCCAGAAGAAAAGAGGCATTTTCCCCAAAGTAGCAACAAATATCATGAGAGCATGGCTCTTCCAGCAT  
 CTCACACATCCGTACCCTTCCGAAGAGCAGAAGAAACAGTTAGCGCAAGACACAGGACTTACAATTCTCC  
 AAGTAAACAACCTGGTTTATTAATGCCAGAAGAAGAATAGTACAGCCCATGATTGACCAGTCAAATCGAGC  
 AGTGAGCCAAGGAGCAGCATATAGTCCAGAGGGTCAGCCCATGGGAGCTTTGTGTTGGATGGTCAGCAA  
 CACATGGGGATCCGGCTGCAGGACCTATGAGTGAATGGCATGAATATGGGCATGGATGGGCAATGGC  
 ACTACATG

**ACGCGT**ACGCGGCCGCTCGAG - GFP Tag - GTTTAA



[View online »](#)

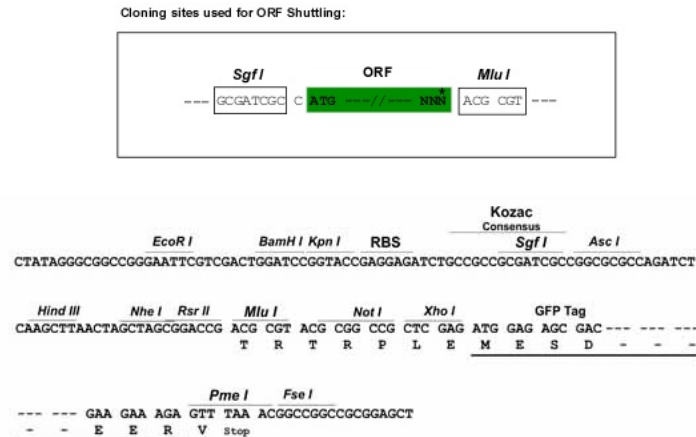
**Protein Sequence:** >RG222497 representing NM\_172316  
Red=Cloning site Green=Tags(s)

MALVFEKCELATCTPREPGVAGGDVCSDSFNEDI AVFAKQVRAEKPLFSSNPELDNLMIQAIQVLRFHL  
LELEKVHELCDNFCHRYISCLKGMKPIDLVIDERDGSKSDHEELSGSSTNLADHNPSSWRDHDATSTH  
SAGTPGPSSGGHASQSGDNSSEQDGLDNSVASPGTGDDDDPKDKKRQKKRGIFPKVATNIMRAWLFQH  
LTHPYPSEEQKKQLAQDTGLTILQVNNWF INARRRIVQPMIDQSNRAVSQGAAYSPEGQPMGSFVLDGQQ  
HMGIRPAGPMSGMGMNMGMDGQWHYM

TRTRPLE – GFP Tag – V

**Restriction Sites:** SgfI-MluI

**Cloning Scheme:**



**ACCN:** NM\_172316

**ORF Size:** 918 bp

**OTI Disclaimer:** The molecular sequence of this clone aligns with the gene accession number as a point of reference only. However, individual transcript sequences of the same gene can differ through naturally occurring variations (e.g. polymorphisms), each with its own valid existence. This clone is substantially in agreement with the reference, but a complete review of all prevailing variants is recommended prior to use. [More info](#)

**OTI Annotation:** This clone was engineered to express the complete ORF with an expression tag. Expression varies depending on the nature of the gene.

**Components:** The ORF clone is ion-exchange column purified and shipped in a 2D barcoded Matrix tube containing 10ug of transfection-ready, dried plasmid DNA (reconstitute with 100 ul of water).

**Reconstitution Method:**

1. Centrifuge at 5,000xg for 5min.
2. Carefully open the tube and add 100ul of sterile water to dissolve the DNA.
3. Close the tube and incubate for 10 minutes at room temperature.
4. Briefly vortex the tube and then do a quick spin (less than 5000xg) to concentrate the liquid at the bottom.
5. Store the suspended plasmid at -20°C. The DNA is stable for at least one year from date of shipping when stored at -20°C.

**RefSeq:** [NM\\_172316.2](#)

**RefSeq Size:** 3175 bp

**RefSeq ORF:** 921 bp

**Locus ID:** 4212

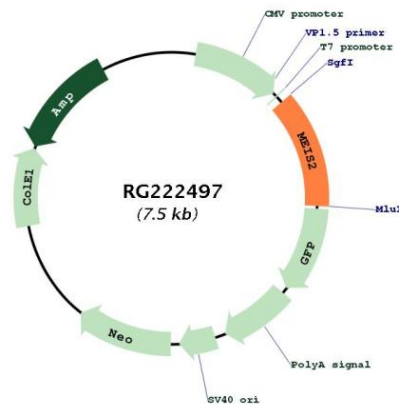
**UniProt ID:** [O14770](#)

**Cytogenetics:** 15q14

**Protein Families:** Transcription Factors

**Gene Summary:** This gene encodes a homeobox protein belonging to the TALE ('three amino acid loop extension') family of homeodomain-containing proteins. TALE homeobox proteins are highly conserved transcription regulators, and several members have been shown to be essential contributors to developmental programs. Multiple transcript variants encoding distinct isoforms have been described for this gene. [provided by RefSeq, Jul 2008]

## Product images:



Circular map for RG222497