

Product datasheet for **RG222480**

HISPPD2A (PIIP5K1) (NM_014659) Human Tagged ORF Clone

Product data:

Product Type:	Expression Plasmids
Product Name:	HISPPD2A (PIIP5K1) (NM_014659) Human Tagged ORF Clone
Tag:	TurboGFP
Symbol:	PIIP5K1
Synonyms:	HISPPD2A; hsVIP1; IP6K; IPS1; VIP1
Mammalian Cell Selection:	Neomycin
Vector:	pCMV6-AC-GFP (PS100010)
E. coli Selection:	Ampicillin (100 ug/mL)
ORF Nucleotide Sequence:	>RG222480 representing NM_014659 Red=Cloning site Blue=ORF Green=Tags(s)

TTTTGTAATACGACTCACTATAGGGCGGCCGGAATTCGTCGACTGGATCCGGTACCGAGGAGATCTGCC
GCC**CGATCGCC**

ATGTGGTCATTGACGGCCAGTGAGGGCGAGAGTACCACGGCCACTTCTTCCTTGGAGCTGGAGATGAGG
GGCTGGGCACCCGTGGAATAGGCATGAGGCCAGAAGAGAGTGACAGCGAGCTCCTTGAGGATGAGGAGGA
TGAAGTGCCTCCTGAACCTCAGATCATTGTTGGCATCTGTCCATGACCAAGAAATCCAAGTCCAAGCCA
ATGACTCAAATCCTAGAGCGACTCTGCAGATTTGACTACCTGACTGTTGTCATTCTGGGAGAAGATGTAA
TCCTTAATGAACCTGTGAAAAGTGGCCATCCTGCCACTGCCTCATCTCTTTCCACTCCAAGGCTTTCC
TCTGGACAAAGCTGTTGCTTACTCCAAGCTTCGAAACCCCTTTCTTATCAATGATCTGGCCATGCAGTAT
TACATCCAAGATAGGAGGGAGGTGTACCGATCCTGCAGGAAGAGGGTATTGATCTGCCTCGATATGCTG
TGCTCAACCGTGATCCTGCCCGGCTGAGGAATGCAACCTGATAGAAGGTGAAGACCAAGTAGAGGTCAA
TGGAGCTGTCTTTCCCAAGCCCTTTGTGGAGAAGCCAGTGAGTGCAGAAGACCACAATGTTTACATCTAC
TACCCAGCTCAGCTGGAGGAGGAAGCCAGCGTCTCTTCGTAAGATTGGCAGCCGAAGCAGTGTACT
CTCCTGAGAGCAGCGTCCGAAAGACGGGGTTCGTACATCTATGAGGAGTTTATGCCAACAGATGGCACAGA
TGTC AAGGTGTATACAGTGGGGCCAGATTATGCCATGCTGAAGCTAGAAAATCTCCAGCTTTGGATGGG
AAGTTGAACGAGACAGTGAGGGGAAAGAGATTCCAGTATCCAGTATGCTGACTGCCATGGAAAAGCTGG
TGGCCAGGAAAGTCTGCGTAGCTTTCAAGCAAACAGTTTGTGGATTTGACCTTCTTCGTGCCAATGGTCA
TTCTTTGTGTGTGATGTCAATGGCTTTAGTTTTGTCAAGAACTCGATGAAATACTACGATGACTGTGCC
AAGATTCTGGGAAACACCATAATGCGGGAGCTTGCCCCACAGTTCAGATTCCATGGTCCATCCCCACGG
AGGCTGAGGACATTCCCATTGTTCCCACCACATCTGGCACTATGATGGAACCTCGTTGTGTCATTGCAAT
TATTCGTCATGGGATCGTACTCCCAAGCAGAAGATGAAGATGGAAGTGAACACCCAAGGTTTTTTGCT
CTGTTTAAAAACATGGTGGCTACAAGACAGGAAATTAATACTCAAGCGACCTGAGCAGCTCCAGGAGG
TGCTGGATATCACAAGGCTGTTGTTGGTGAAGTGGAGAAAGAACCAGGTGGTGGATCGAGGAGAAGAC
TGAAAACATAGAGCAGCTGAAGTCTGACTGGAGATGTATGGTCACTTCTCAGGTATAAACCGGAAGGTA



[View online »](#)

CAATTGACTTACTACCCTCATGGAGTAAAAGCTTCTAATGAGGGGCAAGATCCACAGAGGGAAACTCTGG
CCCCATCTCTGTTGCTGGTACTGAAGTGGGGTGGAGAAGTACTCCTGCTGGCCGTGTTACAGGCTGAGGA
GCTGGGGCGAGCTTTTCGCTGCATGTACCCTGGAGGACAGGGTACTATGCTGGCTTCCCTGGTTGTGGG
CTGCTTCGCTCCATAGCACTTTCCGCCACGATCTCAAGATCTATGCCTCTGATGAGGGTCGTGTTGAGA
TGACTGCTGCTGCCTTCGCCAAGGGCTTCTGGCTCTAGAAGGGGAGCTGACACCCATTTTGGTGAACAT
GGTGAAGAGTGCCAACATGAATGGGCTACTGGACAGCGATGGGGATTCTTGAGCAGCTGCCAGCACCGG
GTGAAGGCTCGGCTGCACCATATTTACAGCAGGATGCGCCCTTTGGCCCTGAGGACTACGATCAGCTGG
CTCCCACCAGAAGTACTTCCCTGCTCAACTCCATGACTATCATCCAGAATCCTGTGAAGGTCTGTGATCA
GGTATTTGCCCTGATCGAAAACCTCACCCACCAGATCCGGGAACGAATGCAGGACCCAGGTCTGTAGAC
CTGCAGCTCTACCACAGTGAGACACTAGAGCTAATGCTACAGCGTTGGAGCAAGCTGGAGCGTGACTTTC
GACAGAAGAGTGGGCGCTATGATATCAGTAAGATCCCTGACATCTATGACTGTGTCAAGTATGATGTGCA
GCACAATGGGAGTCTGGGACTTCAAGGCACAGCAGAGTTGCTCCGTCTCTAAGGCACTGGCTGATGTG
GTCATTCCCAGGAGTACGGGATCAGTCGGGAGGAGAACTGGAATGCTGTGGGCTTCTGTCTCCAC
TGTTGCGGAAGATACTACTTGACCTGCAGAGAACCACAGGATGAGTCTGTCAACAAGCTGCATCCCCT
GTACTCCCAGGGGTGCTCTCCCAGGTGCCACGTTTGAACGCGTCTCTATTTACCAGTGAGAGCCAT
GTCCACTCCCTGCTCAGTGTCTTCCGTTATGGAGGACTTCTTGATGAGACCCAGGATGCACAATGGCAGC
GAGCTTTGGATTATCTTAGTGCCATCTCAGAGCTTAACTACATGACCCAGATTGTCATCATGCTTTATGA
GGACAACACACAGGATCCCTTATCAGAGGAACGGTTCCATGTGGAGCTACACTTCAGCCCCGGAGTGAAA
GGTGTGAGGAAGAAGGCAGTGCCCCGGCTGGCTGTGGATTCCGTCCAGCCTCTTCTGAGAATGAGGAGA
TGAAAACCAACCAAGGCAGTATGGAGAACCTGTGTCCAGGAAAGGCATCAGATGAACCAGACCCGGGCATT
GCAGACTTCACCCAGCCTCCTGAGGGCCCTGGCCTTCCGAGGAGATCACCCCTATTGTAACCGAAAA
GCTGGTTCCATGGAGTACTTTCTGAGACTTCACTCTCGAGGCCCTGGTGGCTACCGGCTCTTTTCATCTT
CACGGCCACCCACAGAAATGAAGCAGAGTGGCCTAGGCTCACAGTGCACAGGGCTGTTGAGCAGCAGT
GCTGGGTGGCTCCTCCAGTGCCCCGAATCTTCCAGGACTACGCCCGCAGCCATGGCAAAAAGCTACCACCT
GCCAGTCTGAAGCACCGAGATGGGTTTGAAGGGTGTTCATGGTCCATACCCTCTGGAACAC
TGCATAATGCCCTTTCCCTACGTCAGTGAAGTGAATTCTTGAAGTAGTCTGCCAGCGCCACACTGATGC
CCAGGCACAGGCATCTGCAGCCCTCTTTGATTCCATGCACAGCAGCCAGGCCCTCAGATAACCCATTTTCT
CCACCAGTACTTTCATTACCTCCCCTGCAACTCCAGCAGCGCTCTGAGAAGCCCCCTTGGTACAGCA
GTGGCCCTTCTAGCACTGTGTCCAGTGTGGTCTTCTCCCCTACTACAGTAGATGGTAACTCCCAATT
TGGCTTCAGTGATCAACCCTCCCTAAATTCACACGTGGCTGAAGAACATCAAGGCCTTGGGCTGCTCCAG
GAGACCCCTGGGAGTGGAGCACAAGAGCTCTCCATAGAAGGGGAGCAAGAGCTTTTGAACCAAATCAGT
CCCCACAGGTGCCACCTATGAAAACAGCCAGCCATACGAGGAGGTCAGCCAGCCATGTCAGGAGGTCCC
TGACATCAGCCAGCCATGCCAGGACATTTCTGAGGCGCTCAGCCAGCCATGTCAGAAGGTCCCTGACATC
AGCCAGCAATGCCAGGAGAACCATGACAATGGTAACCACACATGCCAGGAGGTCCCTCACATCAGCCAGC
CATGCCAGAAGTCCAGCCAATGTGCCAGAAAGTCTCTGAGGAAGTTTGGCAGCTATGCTGTGGAAACTC
CGAGGAGGTGAGCCAGCCATGCCAGGGGTCTCTGTGGAGGTTGGCAAGCTGGTCCATAAGTTCATGTA
GGGTTGGTAGCTTGGTCCAGGAAACCTTGTAGAAGTTGGCAGCCAGCTGAAGAGATCCCTGAGGAGG
TCATCCAGCCATACCAGGAGTTCTCTGTGGAGGTTGGCAGGCTGGCCAGGAGACTTCTGCGATCAATCT
GTTATCTCAGGGCATCCCTGAGATTGATAAACCATCCCAAGAGTCCCTGAGGAGATTGATCTGCAGGCC
CAGGAGGTCCTGAGGAGATAAAT

AGCGGACCGACGCGTACGCGGCCGCTCGAG - GFP Tag - GTTTAA

Protein Sequence: >RG222480 representing NM_014659
 Red=Cloning site Green=Tags(s)

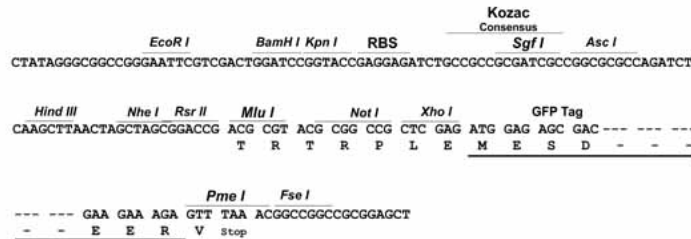
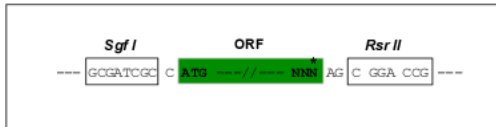
```
MWSLTASEGESTTAHFFLGAGDEGLGTRGIGMRPEESDSSELLEDEEDEVPPPEQIIVGICAMTKKSKSKP
MTQILERLCRFDYLTVVILGEDVILNEPVENWPSCHCLISFHSGKGFPLDKAVAYSKL RNPFLINDLAMQY
YIQDRREVYRILQEEGIDLPRYAVLNDRPARPEECNLIEGEDQVEVNGAVFPKPFVEKPVSAEDHNVIYI
YPSSAGGGSQRLFRKIGSRSSVYSPSSVRKTGSYIYEEFMPTDGTVDKVVYTVGPDYAHAEARKSPALDG
KVERDSEGEIRYPVMLTAMEKLVARKVCVAFKQTVCGFDLLRANGHSFVCDVNGFSFVKNSMKYYDDCA
KILGNTIMRELAPQFQIPWSIPTAEDIPIVPTTSGTMMELRCVIAIRHGDRTPKQKMKMEVKHPRFFA
LFEKHGGYKTKGLKLRPEQLQEVLDITRLLLAELEKEPGEIEEKTGKLEQLKSVLEMYGHFSGINRKV
QLTYYPHGKASNEGQDPQRETLAPSLLLVLKGGELTPAGRVAEELGRAFRMYPGGQGDYAGFPGCG
LLRLHSTFRHDLKIYASDEGRVQMTAAFAKLLALEGELTPILVQMVKSANMNGLLDSDGDSLSSCQHR
VKARLHHILQQDAPFGPEDYDQLAPTRSTLLNSMTIIQNPKVCDQVFAL IENLTHQIRERMQDPRSVD
LQLYHSETLEMLQRWSKLERDFRQKSGRYDISKIPDIYDCVKYDVQHNGSLGLQGTAEALLRLSKALADV
VIPQEYGISREEKLEIAGVFCLPLLRKILLDLQRTHEDESVNKLHPLYSRGLVSPGRHVRTRL YFTSESH
VHSLLSVFRYGGLLDETQDAQWQRALDYLSAISELNYMTQIVIMLYEDNTQDPLSEERFHVLEHFSFGVK
GVEEESAPAGCGFRPASSENEEMKTNQGSMENLCPGKASDEPDRA LQTSQPPEGPGLP RRSPLIRNRK
AGSMEVLSETSSSRPGGYRLFSSSRPPTMKQSGLSGQCTGLFSTTVLGGSSAPNLQDYARSHGKLLPP
ASLKHRDGFEGCSMVPTIYPLETLHNALSLRQVSEFLSRVCQRHTDAQA QASAALFDSMHSSQASDNPF
PPRTLHSPPLQLQRSEKPPWYSSGSPSTVSSAGPSSPTVDGNSQFGFSDQPSLNSHVAEEHQGLLLQ
ETPGSQAQEL SIEGEQELFEPNQSPQVPPMETSQPYEEVSQPCQEV PDISQPCQDI SEALSQPCQKVPDI
SQQCQENHDNGNHTCQEVPHISQPCQKSSQLCQKVSEEV CQLCLENSEEV SQPCQGVSVVEGKLVHKFHV
GVGSLVQETLVEVGSAAEIP EEVIQPYQEF SVEVGR LAQETSAINLLSQGIPEIDKPSQEFPEEIDLQA
QEVPEEIN
```

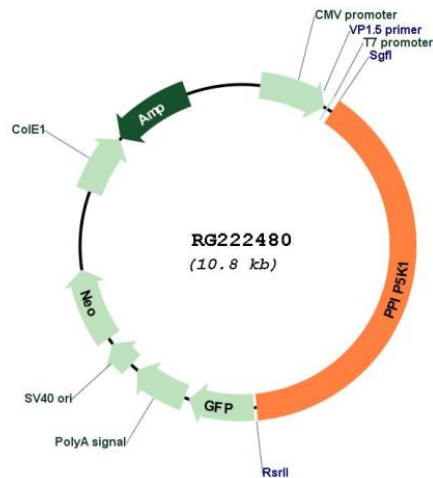
SGPTRRRLE - GFP Tag - V

Restriction Sites: SgfI-RsrII

Cloning Scheme:

Cloning sites used for ORF Shuttling:



Plasmid Map:


ACCN: NM_014659

ORF Size: 5561 bp

OTI Disclaimer: The molecular sequence of this clone aligns with the gene accession number as a point of reference only. However, individual transcript sequences of the same gene can differ through naturally occurring variations (e.g. polymorphisms), each with its own valid existence. This clone is substantially in agreement with the reference, but a complete review of all prevailing variants is recommended prior to use. [More info](#)

OTI Annotation: This clone was engineered to express the complete ORF with an expression tag. Expression varies depending on the nature of the gene.

Components: The ORF clone is ion-exchange column purified and shipped in a 2D barcoded Matrix tube containing 10ug of transfection-ready, dried plasmid DNA (reconstitute with 100 ul of water).

Reconstitution Method:

1. Centrifuge at 5,000xg for 5min.
2. Carefully open the tube and add 100ul of sterile water to dissolve the DNA.
3. Close the tube and incubate for 10 minutes at room temperature.
4. Briefly vortex the tube and then do a quick spin (less than 5000xg) to concentrate the liquid at the bottom.
5. Store the suspended plasmid at -20°C. The DNA is stable for at least one year from date of shipping when stored at -20°C.

RefSeq: [NM_014659.5](#), [NP_055474.3](#)

RefSeq Size: 5565 bp

RefSeq ORF: 4227 bp

Locus ID: 9677

UniProt ID: [Q6PFW1](#)

Cytogenetics: 15q15.3

Domains: acid_phosphat

Gene Summary: This gene encodes a dual functional inositol kinase. The encoded enzyme converts inositol hexakisphosphate to diphosphoinositol pentakisphosphate and diphosphoinositol pentakisphosphate to bis-diphosphoinositol tetrakisphosphate. This protein may be important for intracellular signaling pathways. Alternate splicing results in multiple transcript variants. A pseudogene of this gene is found on chromosome 15.[provided by RefSeq, Jun 2010]