

Product datasheet for **RG222426**

RUNX1T1 (NM_175635) Human Tagged ORF Clone

Product data:

Product Type:	Expression Plasmids
Product Name:	RUNX1T1 (NM_175635) Human Tagged ORF Clone
Tag:	TurboGFP
Symbol:	RUNX1T1
Synonyms:	AML1-MTG8; AML1T1; CBFA2T1; CDR; ETO; MTG8; ZMYND2
Mammalian Cell Selection:	Neomycin
Vector:	pCMV6-AC-GFP (PS100010)
E. coli Selection:	Ampicillin (100 ug/mL)



[View online »](#)

ORF Nucleotide Sequence:

>RG222426 representing NM_175635
 Red=Cloning site Blue=ORF Green=Tags(s)

TTTTGTAATACGACTCACTATAGGGCGGCCGGAATTCGTCGACTGGATCCGGTACCGAGGAGATCTGCC
 GCC**CGGATCGCC**

ATGCCAGACTCACCTGTGGATGTGAAGACGCAATCTAGGCTGACTCCTCCAACAATGCCACCTCCCCAA
 CTA
 CTACTCAAGGAGCTCCAAGAACCAGTTCATTTACACCGACAACGTTAACTAATGGCACGAGCCATTCTCC
 TACAGCCTTGAATGGCGCCCCCTCACCACCAATGGCTTCAGCAATGGGCCTTCTCTTCTCTCTCTCC
 TCTCTGGCTAATCAACAGCTGCCCCAGCCTGTGGTGCCAGGCAACTCAGCAAGCTGAAAAGTTCTTA
 CTACCCTGCAGCAGTTTGGCAATGACATTTACCCGAGATAGGAGAAAGAGTTCGCACCCTGTTCTGGG
 ACTAGTGAATCCACTTTGACAATTGAAGAATTCATTCCAACTGCAAGAAGCTACTAACTTCCCCTG
 AGACCTTTTGTATCCCATTTTTGAAGGCCAATTGCCCTGCTGCAGCGTGAGCTCCTCCACTGCGCAA
 GACTGGCCAAACAGAACCCTGCCAGTACCTCGCCAGCATGAACAGCTGCTTCTGGATGCCAGCACCAC
 CTCACCTGTTGACTCCTCAGAGTGTCTCGATGTGAACGAAAACGGGAAGAGGCGAATCCAGACAGA
 ACCAAAGAAAATGGCTTTGACAGAGAGCCTTTGCACTCAGAACATCCAAGCAAGCGACCATGCACTATTA
 GCCCAGGCCAGCGGTACAGTCCAATAACGGCTTATCCTACCAGCCCAATGGCCTGCCTCACCTACCCC
 ACCTCCACCTCAGCATTACCGTTTGGATGATATGGCCATTGCCACCCTACAGGGACTCCTATCGACAC
 CCCAGCCACAGGGACCTCAGGGACAGAAACAGACCTATGGGGTTGCATGGCACACGTCAAGAAGAAATGA
 TTGATCACAGACTAACAGACAGAGAATGGGCAGAAAGAGTGGAAACATCTTGACCATCTGTAAACTGCAT
 AATGGACATGGTAGAAAAACAAGGCGATCTCTACCGTACTAAGGCGGTGTCAAGAAGCAGACCCGGAA
 GAATTGAATTACTGGATCCGGCGGTACAGTGACGCCGAGGACTTAAAAAAGGTGGCGCAGTAGCAGCA
 GCCACTTAGGCAGCAGAGTCCCCTCAACCCAGACCCAGTTGCACTAGACGCGCATCGGGAATTCCTTCA
 CAGGCCTGCGTCTGGATACGTGCCAGAGGAGATCTGGAAGAAAGCTGAGGAGGCCGTCATGAGGTGAAG
 CGCCAGGCGATGACGGAGCTGCAGAAGGCCGTGTCTGAGGCGGAGCGGAAAGCCACGACATGATACAA
 CAGAGAGGGCCAAGATGGAGCGCACGGTCGCCGAGGCCAAACGGCAGGCGGCGGAGGACGCACTGGCAGT
 TATCAATCAGCAGGAGGATTCAAGCGAGAGTTGCTGGAATTGTGGCCGTAAGCGAGTGAACCTGCAGT
 GGCTGTAAACAGCCGATACTGTGGCTCATTTTCCAGCACAAAGACTGGGAGAAGCACCATCACATCT
 GTGGACAGACCCTGCAGGCCAGCAGCAGGAGACACACCTGCAGTCAGTCTCTGTACGCCCCAACAG
 CGGGGCTGGGAGCCGATGGACACACCACAGCAGCCACTCCGAGGTCAACCACCCCGGGAACCCCTTCC
 ACCATAGAGACAACCCCTCGC

ACGCGTACGCGGCCGCTCGAG – GFP Tag – GTTTAA

Protein Sequence:

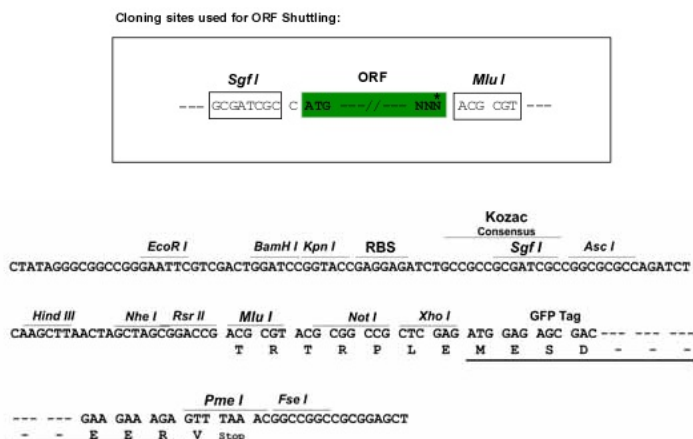
>RG222426 representing NM_175635
 Red=Cloning site Green=Tags(s)

MPDSPVDVKTQSRLTPPTMPPPTTQGAPRTSSFPTTTLNNGTSHSPTALNGAPSPPPNGFSNGPSSSSSS
 SLANQQLPPACGARQLSKLKRFLTTLQQFGNDISPEIGERVRTLVLGLVNSTLTIEEFHSLKQEATNFPL
 RPFVIFPLKANLPLLQRELLHCARLAKQNPAYLAQHEQLLLDASTTSPVDSSELLLDVNENGRKRPDR
 TKENGFDRPLHSEHPSKRPCTISPGQRYSPNGLSYQPNGLPHPTPPPPQHYRLDDMAIAHHYRDSYRH
 PSHRDLRDRNRMGLHGTRQEEMIDHRLTDREWAEWKHLDHLLNCIMDMVEKTRRSLTVLRRCQEADRE
 ELNYWIRRYSDAEDLKKGGGSSSSHSRQQSPVNPDPVALDAHREFLRHPASGYVPEEIKKAEAVNEVK
 RQAMTELQKAVSEAERKAHDMITTEKAKMERTVAEAKRQAAEDALAVINQQEDSSESCWNCGRKASETCS
 GCNTARYCGSFCQHKDWEKHHHICGQTLQAQQGDTPAVSSSVTPNSGAGSPMDTPPAATPRSTTPGTPS
 TIETTPR

TRTRPLE – GFP Tag – V

Restriction Sites:

Sgfl-MluI

Cloning Scheme:


ACCN: NM_175635

ORF Size: 1701 bp

OTI Disclaimer: The molecular sequence of this clone aligns with the gene accession number as a point of reference only. However, individual transcript sequences of the same gene can differ through naturally occurring variations (e.g. polymorphisms), each with its own valid existence. This clone is substantially in agreement with the reference, but a complete review of all prevailing variants is recommended prior to use. [More info](#)

OTI Annotation: This clone was engineered to express the complete ORF with an expression tag. Expression varies depending on the nature of the gene.

Components: The ORF clone is ion-exchange column purified and shipped in a 2D barcoded Matrix tube containing 10ug of transfection-ready, dried plasmid DNA (reconstitute with 100 ul of water).

Reconstitution Method:

1. Centrifuge at 5,000xg for 5min.
2. Carefully open the tube and add 100ul of sterile water to dissolve the DNA.
3. Close the tube and incubate for 10 minutes at room temperature.
4. Briefly vortex the tube and then do a quick spin (less than 5000xg) to concentrate the liquid at the bottom.
5. Store the suspended plasmid at -20°C. The DNA is stable for at least one year from date of shipping when stored at -20°C.

RefSeq: [NM_175635.3](#)

RefSeq Size: 3233 bp

RefSeq ORF: 1704 bp

Locus ID: 862

UniProt ID: [Q06455](#)

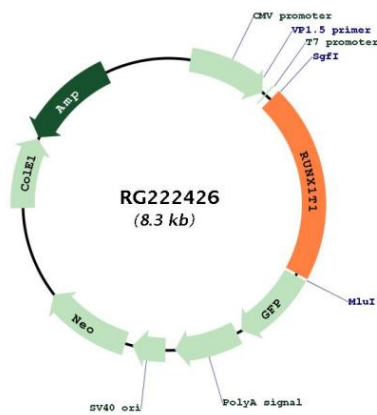
Cytogenetics: 8q21.3

Protein Families: Transcription Factors

Protein Pathways: Acute myeloid leukemia, Pathways in cancer

Gene Summary: This gene encodes a member of the myeloid translocation gene family which interact with DNA-bound transcription factors and recruit a range of corepressors to facilitate transcriptional repression. The t(8;21)(q22;q22) translocation is one of the most frequent karyotypic abnormalities in acute myeloid leukemia. The translocation produces a chimeric gene made up of the 5'-region of the runt-related transcription factor 1 gene fused to the 3'-region of this gene. The chimeric protein is thought to associate with the nuclear corepressor/histone deacetylase complex to block hematopoietic differentiation. Alternative splicing results in multiple transcript variants. [provided by RefSeq, Nov 2010]

Product images:



Circular map for RG222426