

## Product datasheet for **RG222407**

### RNF13 (NM\_183381) Human Tagged ORF Clone

#### Product data:

**Product Type:** Expression Plasmids  
**Product Name:** RNF13 (NM\_183381) Human Tagged ORF Clone  
**Tag:** TurboGFP  
**Symbol:** RNF13  
**Synonyms:** DEE73; EIEE73; RZF  
**Mammalian Cell Selection:** Neomycin  
**Vector:** pCMV6-AC-GFP (PS100010)  
**E. coli Selection:** Ampicillin (100 ug/mL)  
**ORF Nucleotide Sequence:** >RG222407 representing NM\_183381  
 Red=Cloning site Blue=ORF Green=Tags(s)

TTTTGTAATACGACTCACTATAGGGCGGCCGGAATTCGTCGACTGGATCCGGTACCGAGGAGATCTGCC  
 GCC**CGATCGCC**

ATGCTGCTCTCCATAGGGATGCTCATGCTGTCAGCCACACAAGTCTACCCATCTTGACTGTCCAGCTCT  
 TTGCATTCTAAACCTACTGCCTGTAGAAGCAGACATTTAGCATATAACTTTGAAAATGCATCTCAGAC  
 ATTTGATGACCTCCCTGCAAGATTTGGTTATAGACTTCCAGCTGAAGGTTTAAAGGGTTTTTGATTAAC  
 TCAAAACCAGAGAATGCCTGTGAACCCATAGTGCCTCCACAGTAAAAGACAATTCATCTGGCATTTC  
 TCGTGTTAATTAGAAGACTTGATTGTAATTTTGATATAAAGGTTTTAAATGCACAGAGAGCAGGATACAA  
 GGCAGCCATAGTTCACAATGTTGATTCTGATGACCTCATTAGCATGGGATCCAACGACATTGAGGTA  
 AAGAAAATTGACATTCCATCTGTCTTTATTGGTGAATCATCAGCTAATTCTCTGAAAGATGAATTCACAT  
 ATGAAAAGGGGGCCACCTTATCTTAGTTCAGAAATTTAGTCTTCTTGGAACTACCTAATTCCTT  
 CCTATCATAGTGGGCATCTGTCTCATCTTGATAGTCAATTTTCATGATCACAAAATTTGTCCAGGATAGA  
 CATAGAGCTAGAAGAACAGACTTCGTAAGATCAACTTAAGAACTTCTGTACATAAATTCAGAAAG  
 GAGATGAGTATGATGTATGTGCCATTTGTTGGATGAGTATGAAGATGGAGACAACTCAGAATCCTTCC  
 CTGTTCCCATGCTTATCATTGCAAGTGTGTAGACCCTTGGCTAACTAAAACAAAAAACCTGTCCAGTG  
 TGAAGCAAAAAGTTGTTCTTCAAGCGGATTCAGACTTGACACAGACAGTAGTCAAGAAGAAAATG  
 AAGTGACAGAACATACCCCTTACTGAGACCTTTAGCTTCTGTGAGTCCAGTCAATTTGGGGCTTTATC  
 GGAATCCCCTCACATCAGAATGACAGAATCTTCAGACTATGAGGAAGACGACAAATGAAGATACTGAC  
 AGTAGTATGACAGAAAATGAAATTAATGAACATGATGTCGTGGTCCAGTTCAGCCTAATGGTGAACGGG  
 ATTACAACATAGCAAACTACTGTT

AC**CGT**ACGCGGCCGCTCGAG - GFP Tag - GTTTAA



[View online »](#)

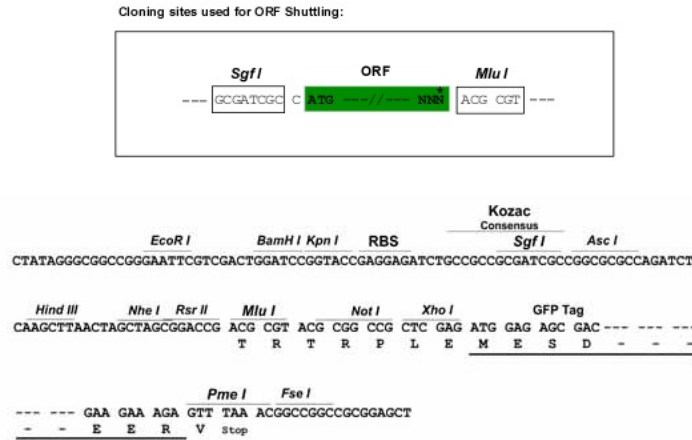
**Protein Sequence:** >RG222407 representing NM\_183381  
 Red=Cloning site Green=Tags(s)

MLLSIGMLMLSATQVYITLTVQLFAFLNLLPVEADILAYNFENASQTFDDLPARFGYRLPAEGLKGFLLN  
 SKPENACEPIVPPPVKDNSSGTFIVLIRRLDCNFDIKVLNAQRAGYKAAIVHNVSDDLISMGSNDEIVL  
 KKIDIPSVFIGESSANSLKDEFTYEKGGHLILVPEFSLPLEYYLIPFLIIVGICLILIVIFMITKVFQDR  
 HRARRNRLRKDQLKPLPVHKFKKDEYDVCAICLDEYEDGDKLRILPCSHAYHCKCVDPWLTKTKKTCPV  
 CKQKVVPVSPQSDSDTSSQEENEVTEHTPLLRPLASVSAQSFALSESRSHQNMTESSDYEDDNDTDT  
 SSDAENEINEHDVVVQLQPNGERDYNIANTV

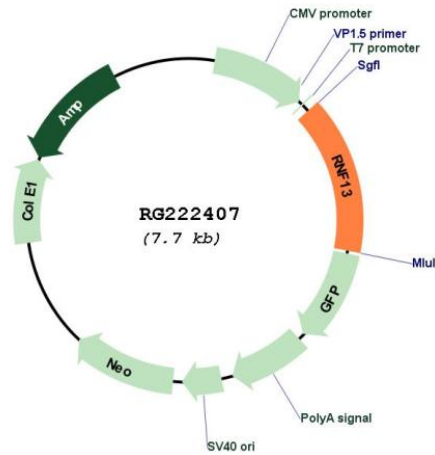
TRTRPLE - GFP Tag - V

**Restriction Sites:** SgfI-MluI

**Cloning Scheme:**



**Plasmid Map:**



**ACCN:** NM\_183381

<b>ORF Size:</b>	1143 bp
<b>OTI Disclaimer:</b>	The molecular sequence of this clone aligns with the gene accession number as a point of reference only. However, individual transcript sequences of the same gene can differ through naturally occurring variations (e.g. polymorphisms), each with its own valid existence. This clone is substantially in agreement with the reference, but a complete review of all prevailing variants is recommended prior to use. <a href="#">More info</a>
<b>OTI Annotation:</b>	This clone was engineered to express the complete ORF with an expression tag. Expression varies depending on the nature of the gene.
<b>Components:</b>	The ORF clone is ion-exchange column purified and shipped in a 2D barcoded Matrix tube containing 10ug of transfection-ready, dried plasmid DNA (reconstitute with 100 ul of water).
<b>Reconstitution Method:</b>	<ol style="list-style-type: none"><li>1. Centrifuge at 5,000xg for 5min.</li><li>2. Carefully open the tube and add 100ul of sterile water to dissolve the DNA.</li><li>3. Close the tube and incubate for 10 minutes at room temperature.</li><li>4. Briefly vortex the tube and then do a quick spin (less than 5000xg) to concentrate the liquid at the bottom.</li><li>5. Store the suspended plasmid at -20°C. The DNA is stable for at least one year from date of shipping when stored at -20°C.</li></ol>
<b>RefSeq:</b>	<a href="#">NM_183381.1</a> , <a href="#">NP_899237.1</a>
<b>RefSeq Size:</b>	2854 bp
<b>RefSeq ORF:</b>	1146 bp
<b>Locus ID:</b>	11342
<b>UniProt ID:</b>	<a href="#">O43567</a>
<b>Cytogenetics:</b>	3q25.1
<b>Protein Families:</b>	Druggable Genome, Protease, Transmembrane
<b>Gene Summary:</b>	The protein encoded by this gene contains a RING zinc finger, a motif known to be involved in protein-protein interactions. The specific function of this gene has not yet been determined. Alternatively spliced transcript variants that encode the same protein have been reported. A pseudogene, which is also located on chromosome 3, has been defined for this gene. [provided by RefSeq, Jul 2008]