

Product datasheet for **RG222401**

SLC4A5 (NM_021196) Human Tagged ORF Clone

Product data:

Product Type:	Expression Plasmids
Product Name:	SLC4A5 (NM_021196) Human Tagged ORF Clone
Tag:	TurboGFP
Symbol:	SLC4A5
Synonyms:	NBC4; NBCe2
Mammalian Cell Selection:	Neomycin
Vector:	pCMV6-AC-GFP (PS100010)
E. coli Selection:	Ampicillin (100 ug/mL)
ORF Nucleotide Sequence:	>RG222401 representing NM_021196 Red=Cloning site Blue=ORF Green=Tags(s)

TTTTGTAATACGACTCACTATAGGGCGGCCGGAATTCGTCGACTGGATCCGGTACCGAGGAGATCTGCC
GCC**CGATCGCC**

ATGAAGGTGAAGGAGGAGAAGGCTGGGGTAGGAAAGCTGGACCACACTAACCACAGGAGGAGATTCCGG
ATCAGAAAGAATGCCCTCTATCCACATTGGGCTTCCAGTACCCACTTACCCTCAAAGAAAACTGACCA
GAAGGGACATCTTCAGGCCTGCAAAAAGTCCACTGGGGCTGCGGCCAGACCAGCCACAGCAGGAACTG
ACTGGCCAGGGAGTGGGCAAGCAGCCAGGACAGCAGCATGGATCTTATCAGCAGGACTCGTCCCCAG
CTGCTGAGCAGCTCCAGGACATCTGGGGGAGGAAGATGAGGCTCCCAACCCACCCTCTTACAGAGAT
GGATACTCTGCAGCATGACGGAGACCAGATGGAGTGGAAGGAGTCAGCCAGGTGGATAAAGTTTGAAGAA
AAGGTAGAGGAAGGCGGCAACGCTGGAGCAAGCCCCACGTGTCCACACTATCCCTGCACAGCCTCTTCG
AGCTCCGTACCTGCCTGCAGACGGGGACGGTGTGCTGGATTTGGACAGTGGCTCCTTACCACAGATCAT
AGATGATGTCAATTGAGAAGCAGATTGAGGATGGTCTCCTGCGGCCAGAGCTCCGGGAGAGGGTCAGTTAC
GTCCTCCTGAGGAGGCACCGCCACCAACAAGAAGCCCATCCACCGCTCCTTAGCTGACATTGGGAAGT
CAGTCTCCACCACAAATCGCAGTCTGCCCGGAGCCCTGGTGTGGCCCGAGTCTACACCACTCCACGGA
AGACTTGGGATGCGGCAGAGTGCAAATTACGGACGTCTGTGTCATGCCAGAGCAGAAGCATGAATGAC
ATTTCTCACCCAAACACAGACCAGCGGAAAAACAAATTCATGAAGAAGATCCCAAGGACTCAGAAG
CGTCCAACGTGCTCGTGGGCGAGGTGGACTTCTAGACCAGCCATTTCATCGCGTTCTGTCGCGCTCATCCA
GTCGGCCATGCTGGGAGGAGTGACCGAGGTGCCTGTCCCAACAGATTTCTGTTATACTACTGGGACCT
TCTGGGAGAGCAAAATCTACAATGAAATTGGCCGTGCCATTGCAACCCTCATGGTAGATGATCTTTCA
GTGACGTGGCCTACAAAGCCCGCAATCGGGAAGATCTGATCGCAGGAATTGATGAATTTCTGGATGAGGT
CATCGTCTTCTCCTGGAGAATGGACCCAAATATCCGGATTGAGCCCCCAAGAAGGTGCCCTCTGCT
GACAAGAGGAAATCTGTGTTCTCCCTAGCAGAGCTGGGCCAGATGAATGGCTCTGTGGGAGGAGGCGCG
GAGCTCCTGGAGGAGCAATGGAGGTGGTGGTGGTGGTGGCAGTGGCGGGGGCTGCCAGTGGCGGGGC
CGCGGAACAAGCAGCGGGATGATGGAGAGATGCCAGCCATGCATGAAATCGGGGAGGAACCTTATCTGG



[View online »](#)

ACAGGAAGGTTCTTCGGTGGCCTGTGTCTGGATATCAAGAGGAAGTTGCCCTGGTCCCAAGTGACTTCT
 ATGATGGCTTCCACATTCAGTCCATCTCTGCCATCCTATTCATCTACCTCGGCTGTATACCAACCGCAT
 CACCTTTGGTGGGCTTCTGGGGATGCCACCGACAATTATCAGGGAGTGATGGAGAGCTTCTGGGCACT
 GCCATGGCTGGCTCCTTGTCTCGCTCTTCTCGGGACAGCCTCTCATCATTCTCAGCAGCACGGGGCCCA
 TCCTCATCTTTGAGAAGCTCCTCTTCGACTTCAGCAAAGGCAATGGCCTGGACTACATGGAGTCCCGCT
 CTGGATTGGCCTACACTCAGCTGCCAGTGCCTTATCCTAGTGGCCACAGATGCCAGCTTTATCATCAA
 TATATCACCCGCTTACCAGGAGGGCTTCTCCACCCTTATCAGCTTCATCTTACATACGATGCCATCA
 AGAAGATGATCGGTGCCTTCAAGTACTACCCTATCAATATGGACTTCAAGCCAAACTTCATCACTACCTA
 CAAGTGGCAGTGTGTCGCCCTGACACAGTGAATACAACCGTGTCAATGCTTCAGCCCCATTGGCACCA
 GACACCAACGCTTCTCTGTACAACCTCCTTAACCTCACAGCGTTGGACTGGTCCCTGCTGAGCAAGAAGG
 AGTGTCTGAGCTACGGCGGGCGCCTGCTGGGAATTCCTGCAAGTTTATCCAGACCTGGCGCTCATGTC
 CTTTCATCTTTTCTTGGGACATACTCCATGACCCTGACCCTGAAGAAGTTCAAATTCAGCCGCTATTTT
 CCTACCAAGTCCGGGCCCTGGTGGCTGACTTTCCATTGTTTTCTCCATCCTGATGTTCTGTGGAATCG
 ATGCTGTTTTGGCTAGAACTCCAAGCTGCATGTGCCAGTGTATCAAGCCACCGCGCCTGACCG
 AGGCTGGTTCGTGGCCCCCTTTGGGAAGAACCCTGGTGGGTATACCCAGCAAGCATCCTGCCCGCCTG
 CTGGTGACCATCCTGATCTTCATGGACCAGCAGATCACTGCCGTATTGTCAACCGGAAGGAGAACAAC
 TGAAGAAGGCTGCCGGCTACCATCTGGACCTGTTCTGGGTGGGCATCCTCATGGCTTTGTCTCCTTTAT
 GGGGCTCCCTGGTACGTGGCTGCCACGGTTCATCTCCATCGCCACATCGACAGCCTCAAGTGGAGACA
 GAGACCAAGTGGCCCTGGGAGCAGCCCCAGTTTCTGGGAGTCAAGGAACAGAGAGTAACCGGCATCATCG
 TCTTCATCCTGACGGGAATCTCTGTCTTCTGGCTCCCATCCTAAAGTGTATCCCCTGCCGGTGTGTA
 CGGAGTCTTCTCATATGGCGTGGCCTCCCTGAATGGCATCCAGATGGGGACCGGAGGGTCAAGATTC
 AAAATCCAGAAGAAGTCACTCCATTCTGGGAACGCTGCAAGCTTCTCTGATGCCAGCAAGCACCAGC
 CGGACCATGCCTTCTCTGCGGCACGTGCCCTGCCCGGATCCACCTTTCACCCTGGTGCAGATCCTCTG
 CCTGGCGGTGCTCTGGATCCTCAAATCCACGGTGGCTGCCATCATCTTCCCGTCAATGATCCTGGCCCTC
 ATCATCGTTCAAGGCTTCTGGATTTATCTTTTCCAGCACGACCTGGCCTGGATTGACAAATCCTCC
 CAGAGAAGGAAAAAAGGAGACAGACAAGAAGAGGAAGAGAAAAAAGGGGCCACGAGGACTGTGATGA
 GGAGCCCCAGTCCCTCCTCCCTCGTTATAAAGATTCCCATGGAAGTGTCCAATCAGATCCCCAAAAC
 GGTATCCACTGCATTGCCAGAAAAGATCTTCCAGTTGGAGTTACTCACTC

ACGCGTACGCGGCCGCTCGAG - GFP Tag - GTTTAA

Protein Sequence:

>RG222401 representing NM_021196
 Red=Cloning site Green=Tags(s)

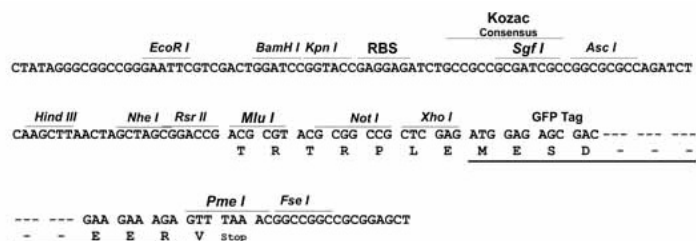
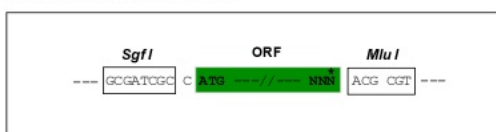
MKVKEEKAGVGLDHTNHRRRFPDQKCEPPIHIGLPVPTYRQRKTDQKGHLSGLQKVHWGLRPDQPQEL
 TGPGSGASSQDSSMDLISRTRSPAAEQLDILGEEDEAPNPTLFTEMDTLQHDGDMEWKESARWIKFEE
 KVEEGERWSKPHVSTLSLHSLFELRTCLQTGTVLLDLDSGSLPQIIDVIEKQIEDGLRPELRERSY
 VLLRRHRHQTKPIHRSLADIGKSVSTTNRSPARSPGAGPSLHHSTEDLRMRQSANYGRLCHAQSRSMND
 ISLTPNTDQRKNKFMKKIPKDSEASNVLVGEVDFLDQPFIAFVRLIQSAMLGGVTEVPVTRFLFILLGP
 SGRAKSYNEIGRAIATLMVDDLFSVAYKARNREDLIAGIDEFLDEVIVLPPGEWDPNIRIEPPKVPSPA
 DKRKSVMFLAELQGMNGSVGGGGAPGGGGGGGGGGGGGAGSGGAGGTSSGDDGEMPAHMEIGEELIW
 TGRFFGGLCLDIKRLPWFPSDFYDGFHIQSISAILFIYLGICITNAITFGLLGDATDNYQGMESFLGT
 AMAGSLFCLFSGQPLIILSSTGPILIFEKLLDFSKGNGLDYMEFRLWIGLHSAVQCLILVATDASFIIK
 YITRFTEEGFSTLISFIFIYDAIKKMIGAFKYYPINMDFKPNFITTYKCECVAPDVTNTVFNASAPLAP
 PTNASLYNLLNLALDWSLLSKKECLSYGGRLLGNSCKFIPDLALMSFILFFGTYSMTLTLKKFKFSRYF
 PTKVRALVADFSIVFSILMFCGIDACFLETPLKLVHPSVIKPPRPDRGWVAPFGKNPWVYYPASILPAL
 LVTILIFMDQQITAVIVNRKENLKAAGYHLDLFWVGILMALCSFMGLPWYVAATVISIAHIDSLKMET
 ETSAPGEQPFLGVREQRVTGIIIVFILTGISVFLAPILKCIPLVLYGVFLYMGVASLNGIQMGTGGSEF
 KIQKLLTPFWERCKLFLMPAKHQPDHAFLRHVPLRRIHLFTLVQILCLAVLWILKSTVAAIIFPVMILGL
 IIVRRLDFIFSQHLAWIDNILPEKEKETDKKRKRKKGHEDCDEEPQFPPPSVIKIPMESVQSDPQN
 GIHCIARKRSSWSYSL

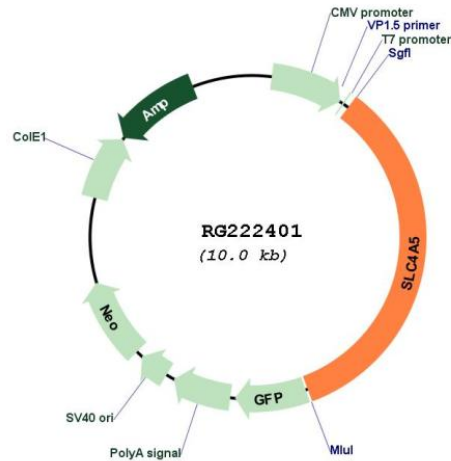
TRTRPLE - GFP Tag - V

Restriction Sites: SgfI-MluI

Cloning Scheme:

Cloning sites used for ORF Shutting:



Plasmid Map:


ACCN: NM_021196

ORF Size: 3411 bp

OTI Disclaimer: The molecular sequence of this clone aligns with the gene accession number as a point of reference only. However, individual transcript sequences of the same gene can differ through naturally occurring variations (e.g. polymorphisms), each with its own valid existence. This clone is substantially in agreement with the reference, but a complete review of all prevailing variants is recommended prior to use. [More info](#)

OTI Annotation: This clone was engineered to express the complete ORF with an expression tag. Expression varies depending on the nature of the gene.

Components: The ORF clone is ion-exchange column purified and shipped in a 2D barcoded Matrix tube containing 10ug of transfection-ready, dried plasmid DNA (reconstitute with 100 ul of water).

Reconstitution Method:

1. Centrifuge at 5,000xg for 5min.
2. Carefully open the tube and add 100ul of sterile water to dissolve the DNA.
3. Close the tube and incubate for 10 minutes at room temperature.
4. Briefly vortex the tube and then do a quick spin (less than 5000xg) to concentrate the liquid at the bottom.
5. Store the suspended plasmid at -20°C. The DNA is stable for at least one year from date of shipping when stored at -20°C.

RefSeq: [NM_021196.2](#), [NP_067019.2](#)

RefSeq Size: 3414 bp

RefSeq ORF: 3414 bp

Locus ID: 57835

UniProt ID: [Q9BY07](#)

Cytogenetics: 2p13.1

Protein Families: Transmembrane

Gene Summary: This gene encodes a member of the sodium bicarbonate cotransporter (NBC) family, part of the bicarbonate transporter superfamily. Sodium bicarbonate cotransporters are involved in intracellular pH regulation and electroneutral or electrogenic sodium bicarbonate transport. This protein is thought to be an integral membrane protein. Multiple transcript variants encoding different isoforms have been found for this gene, but the biological validity of some variants has not been determined. [provided by RefSeq, Jul 2008]