

## Product datasheet for **RG222393**

### PTGER3 (NM\_000957) Human Tagged ORF Clone

#### Product data:

Product Type:	Expression Plasmids
Product Name:	PTGER3 (NM_000957) Human Tagged ORF Clone
Tag:	TurboGFP
Symbol:	PTGER3
Synonyms:	EP3; EP3-I; EP3-II; EP3-III; EP3-IV; EP3e; MGC27302; MGC141828; MGC141829
Mammalian Cell Selection:	Neomycin
Vector:	pCMV6-AC-GFP (PS100010)
E. coli Selection:	Ampicillin (100 ug/mL)
ORF Nucleotide Sequence:	>RG222393 representing NM_000957 Red=Cloning site Blue=ORF Green=Tags(s)

TTTTGTAATACGACTCACTATAGGGCGGCCGGAATTCGTCGACTGGATCCGGTACCGAGGAGATCTGCC  
GCC**CGATCGCC**

ATGAAGGAGACCCGGGGCTACGGAGGGGATGCCCCCTTCTGCACCCGCCTCAACCACTCCTACACAGGCA  
TGTGGGCGCCGAGCGTTCGCGGAGGCGGGGCAACCTCACGCGCCCTCCAGGGTCTGGCGAGGATTG  
CGGATCGGTGTCGTCGCTTCCCGATCACCATGCTGCTCACTGGTTTCGTGGGCAACGCACTGGCCATG  
CTGCTCGTGTGCGCAGCTACCGGCGCCGGAGAGCAAGCGCAAGAAGTCCTTCTGCTGTGCATCGGCT  
GGCTGGCGCTCACCGACCTGGTCGGCAGCTTCTCACCACCCGGTCGTCATCGTCGTGTACCTGTCCAA  
GCAGCGTTGGGAGCACATCGACCCGTCGGGGCGGCTCTGCACCTTTTCGGGCTGACCATGACTGTTTTTC  
GGGCTCTCCTCGTTGTTTCATCGCCAGCGCCATGGCCGTCGAGCGGGCGCTGGCCATCAGGGCGCCGCACT  
GGTATGCGAGCCACATGAAGACGCGTGCCACCCGCGCTGTGCTGCTCGGCGTGTGGCTGGCCGTCGTCG  
CTTCGCCCTGCTGCCGCTGCTGGGCGTGGGCCAGTACACCGTCCAGTGGCCCGGGACGTGGTGTTCATC  
AGCACCGGGCGAGGGGGCAACGGGACTAGCTCTTCGCATAACTGGGGCAACCTTTTCTTCGCTCTGCT  
TTGCCCTTCTGGGCTCTTGGCGCTGACAGTCACTTTTCTGCAACCTGGCCACCATTAAGGCCCTGGT  
GTCCCGCTGCCGGGCAAGGCCACGGCATCTCAGTCCAGTGGCCAGTGGGCGCCATCACGACCGAGACG  
GCCATTCAGCTTATGGGATCATGTGCTGCTGTCGGTCTGCTGGTCTCCGCTCCGATTAATGATGTTGA  
AAATGATCTTCAATCAGACATCAGTTGAGCACTGCAAGACACACGGAAGCAGAAAGAATGCAACTT  
CTTCTTAATAGCTGTTCCGCTGGCTTCACTGAACCAGATCTGGATCCTTGGGTTTACCTGCTGTTAAGA  
AAGATCTTCTCGAAAGTTTTGCCAGATGAGAAAAAGAAGACTCAGAGAGCAAGCTCCTTCTTCCCA  
CCTCTACTGTGATTGATCCTTCAAGTTCTGTGCTCAGCCCTTCCGTTGGTTCTTGGATTGTCTTTCC  
CGCCATGTCTTATCACATCCACAACCTTCCACTAACACTTGCAGCTTCAAACCTTCTAGAGAACCCTGC  
AGTGTCCAGCTAAGC

AGCGGACCGACGCGTACGCGGCCGCTCGAG - GFP Tag - GTTTAA



[View online »](#)

**Protein Sequence:** >RG222393 representing NM\_000957  
 Red=Cloning site Green=Tags(s)

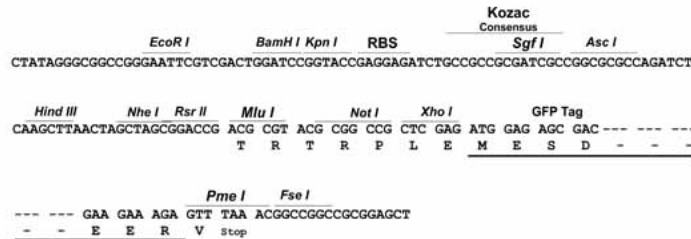
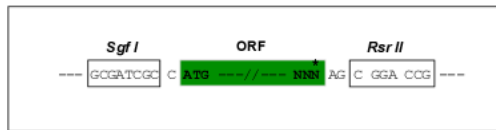
MKETRGYGGDAPFCTRLNHSYTMWAPERSAEARGNLTRPPGSGEDCGSVSVAFPIITMLLTGFVGNALAM  
 LLVRSYRRRESKRKKSFLLCIGWLALDVLVQLLTTPVVIVVYLSKQRWEHIDPSGRLCTFFGLTMTVF  
 GLSSLFIASAMAVERALAIRAPHWYASHMKTRATRAVLGVLAVLAFALLPVLGVGYTVQWPPTWCFI  
 STGRGGNGTSSSHNWGNLFFASAFALGLLALTVTFSCNLATIKALVSRCAKATASQSSAQWGRITTET  
 AIQLMGIMCVLSVCWSPLLIMMLKMIFNQTSVEHCKTHTEKQKECNFLI AVLASLNQILDWPVYLLLR  
 KILLRKFQMRKRLREQAPLLPTSTVIDPSRFCAQPFWFLLDLSPAMSSHPQLPLTLASFKLLREPC  
 SVQLS

SGPTRRRLE - GFP Tag - V

**Restriction Sites:** SgfI-RsrII

**Cloning Scheme:**

Cloning sites used for ORF Shuttling:



**ACCN:** NM\_000957

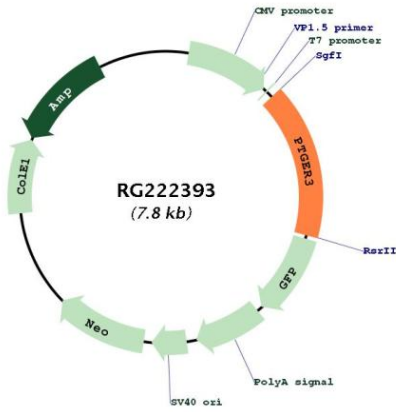
**ORF Size:** 1275 bp

**OTI Disclaimer:** Due to the inherent nature of this plasmid, standard methods to replicate additional amounts of DNA in E. coli are highly likely to result in mutations and/or rearrangements. Therefore, OriGene does not guarantee the capability to replicate this plasmid DNA. Additional amounts of DNA can be purchased from OriGene with batch-specific, full-sequence verification at a reduced cost. Please contact our customer care team at [custsupport@origene.com](mailto:custsupport@origene.com) or by calling 301.340.3188 option 3 for pricing and delivery.

The molecular sequence of this clone aligns with the gene accession number as a point of reference only. However, individual transcript sequences of the same gene can differ through naturally occurring variations (e.g. polymorphisms), each with its own valid existence. This clone is substantially in agreement with the reference, but a complete review of all prevailing variants is recommended prior to use. [More info](#)

<b>OTI Annotation:</b>	This clone was engineered to express the complete ORF with an expression tag. Expression varies depending on the nature of the gene.
<b>Components:</b>	The ORF clone is ion-exchange column purified and shipped in a 2D barcoded Matrix tube containing 10ug of transfection-ready, dried plasmid DNA (reconstitute with 100 ul of water).
<b>Reconstitution Method:</b>	<ol style="list-style-type: none"><li>1. Centrifuge at 5,000xg for 5min.</li><li>2. Carefully open the tube and add 100ul of sterile water to dissolve the DNA.</li><li>3. Close the tube and incubate for 10 minutes at room temperature.</li><li>4. Briefly vortex the tube and then do a quick spin (less than 5000xg) to concentrate the liquid at the bottom.</li><li>5. Store the suspended plasmid at -20°C. The DNA is stable for at least one year from date of shipping when stored at -20°C.</li></ol>
<b>RefSeq:</b>	<u><a href="#">NM_000957.2</a></u> , <u><a href="#">NP_000948.2</a></u>
<b>RefSeq Size:</b>	2082 bp
<b>RefSeq ORF:</b>	1277 bp
<b>Locus ID:</b>	5733
<b>Cytogenetics:</b>	1p31.1
<b>Domains:</b>	7tm_1
<b>Protein Families:</b>	Druggable Genome, GPCR, Transcription Factors, Transmembrane
<b>Protein Pathways:</b>	Calcium signaling pathway, Neuroactive ligand-receptor interaction
<b>Gene Summary:</b>	The protein encoded by this gene is a member of the G-protein coupled receptor family. This protein is one of four receptors identified for prostaglandin E2 (PGE2). This receptor may have many biological functions, which involve digestion, nervous system, kidney reabsorption, and uterine contraction activities. Studies of the mouse counterpart suggest that this receptor may also mediate adrenocorticotrophic hormone response as well as fever generation in response to exogenous and endogenous stimuli. Multiple transcript variants encoding different isoforms have been found for this gene. [provided by RefSeq, Aug 2009]

Product images:



Circular map for RG222393