

## Product datasheet for **RG222391**

### DRIP130 (MED23) (NM\_004830) Human Tagged ORF Clone

#### Product data:

Product Type:	Expression Plasmids
Product Name:	DRIP130 (MED23) (NM_004830) Human Tagged ORF Clone
Tag:	TurboGFP
Symbol:	MED23
Synonyms:	ARC130; CRSP3; CRSP130; CRSP133; DRIP130; MRT18; SUR-2; SUR2
Mammalian Cell Selection:	Neomycin
Vector:	pCMV6-AC-GFP (PS100010)
E. coli Selection:	Ampicillin (100 ug/mL)
ORF Nucleotide Sequence:	>RG222391 representing NM_004830 Red=Cloning site Blue=ORF Green=Tags(s)

TTTTGTAATACGACTCACTATAGGGCGGCCGGAATTCGTCGACTGGATCCGGTACCGAGGAGATCTGCC  
GCC**CGATCGCC**

ATGGAGACGCAACTGCAGAGCATTTTCGAAGAGGTGGTAAAACGGAAGTTATAGAAGAGGCTTTTCCTG  
GCATGTTTATGGATACTCCTGAAGATGAGAAAACAAAATAATTAGCTGTTTGGGGCCCTCAGACAGTT  
TTGGGGTGGTCTTTCTCAGGAGTCTCATGAACAGTGTATCCAGTGGATTGTTAAGTTTATCATGGTCAG  
CATAGTCTAAAAGAATTTCTTTCTTTATGACTGCTTAGCAATGGCAGTTGAGACTGGTCTCCTCCAC  
CCAGGCTGGTTTGTGAATCCCTGATAAACTCTGACACTTTGAGTGGAAAGAACACAGCTTTGGGCCTT  
AACATTTAACTGGTTTCGAAAATAATTGGGGGAGTGGATTACAAGGGTGTTCGAGATCTCTAAAAGTG  
ATTTTGGAGAAGATTTTGACAATTCCTAATACAGTGAGCTCTGCTGTTGTACAGCAGCTTCTGGCAGCAA  
GAGAGGTTATAGCATATATCTTGAAAGAAATGCCTGCTTATTACCAGCCTATTTTGCAGTCACTGAGAT  
CAGGAACTGTATCCTGAAGGCAAACCTCCACACTGGTACTTGGAAACCTAGTATCAGACTTTGTGGAT  
ACCTTCAGGCCACAGCAAGGATAAACTCCATTTGTGGTCGCTGTAGTCTTCTGCCAGTTGTAATAATT  
CGGGTCCATTTGTAATTCATGGAACTGGATCCTGCTACTCTTCGTTTTCTTTGAAAGGCCTTTTGCC  
ATATGATAAGGATCTGTTTGAACCACAGACTGCTTTGTTGAGATATGTATTGGAGCAGCCTTATCCAGG  
GATATGGTCTGCAATATGCTAGGTTTAAATAAGCAGCACAAAGCAGCGCTGCCCTGTGCTGGAGACCAGT  
TGGTGGATCTGGTTGTTTATGCCATGGAGCGATCTGAGACCGAGGAGAAGTTTGACGATGGGGAAACAAG  
CCAACCTCTGTGGCAGCATCTCTCAAGTCACTCATTTCCTTTGTGCTTTTCCAGTTTGAAGTTTCCCA  
CATATGGTCTTTCTCTTCATCAGAAGTTAGCAGGGCAGGACTGATTAAGGCAGAGATCATCTTATGT  
GGGTTCTCCTGCAATTCATTTCTGGAAGTATTCAGAAAAATGCACTAGCTGATTTTCTCCCTGTGATGAA  
GCTCTTCGACTTGCTATACCCAGAAAAAGAATATATCCAGTTCTGATATTAACAAACCCAGTCAACC  
CATGCCTTGAATGACCTGATTTGGATTCACTCAATAGAAAAAGCTCAAAATGACAACTCCAAGCTAC  
AGATTCGAATACCTCATTCCCTAAGACTTCACCATGAGTTCCTGCAGCAGAGTCTAAGAAATAAAGTTT  
ACAGATGAATGACTATAAGATTGCTCTATTGTGAATGCATACTCAAAATTCAGAATGTTTTACATTA



[View online »](#)

```

CCCATGGGAGCTCTGGTAGAAACTATTTATGGAATGGAATTATGAGGATACCTCTCCCTGGAACAACT
GTATGGCTTCAGGATCTATTACCCCTTACCTATGAACCTCCTGGATTCACTGACAGTTCATGCCAAAT
GAGCCTTATTCACAGCATTGCAACCAGGTGATAAACTTGCTCATGCAAAGTCCAGTGTGGCCTTGGCT
CCAGCCCTAGTGGAACTTACAGTCGTTTATTGGTCTATATGGAATAGAGTCTTTGGGCATCAAAGGAT
TTATCAGTCAGCTTTTGCCAACGTGTTTCAAATCATATGCATGGGGGATCTTACACACACTCCTTGAGAT
GTTTAGCTACCGGATGCATCATATTCAGCCTCATTACAGAGTTCAGCTCCTGAGTCATCTCATACTTTG
GCTGCAGTTGCACAAACAACCCAGAACCCAGCTCCATCTTTGTGTGAGAGCACTGCTCAGGCTTATAA
CAGCATTAGGTAGCTCAGAGGTACAACCCAGTTTACACGCTTCCTTAGTGATCCCAAAACAGTGCCTC
AGCAGAATCTGAAGAAGTGAACCGAGCCTTGATATTGACCTTGGCTAGAGCAACTCATGTAACAGATTTT
TTTACAGGCTCTGATTCAATTCAGGGAACCTTGGTGAAAGACATACTTCAGACCATCATGAGTTTCACTC
CTCATAATTGGGCTTACACACCCTGAGCTGTTTTCCAGGCCACTACAGGCATTCTTCAAACAAAATAA
TGTGCCTCAGGAAAGCCGTTTTAATCTGAAAAAATGTGGAGGAGGATATAGGAAGTGGAAAGTCAATG
AGCAACGAAAACGACATTATTACCCACTTCTATGCAGGGCTCCCTCCTCTCTTTCTTGTCTTCTCT
GGAAAATGCTCTTGAAACAGATCATATTAATCAGATTGGCTATAGAGTATTAGAGAGAATTGGAGCCAG
GGCCTTGGTAGCCCATGTGAGGACATTTGCAGATTTCTGGTATATGAGTTTTCTACATCAGCAGGGGT
CAGCAACTCAATAAATGCATTGAAATCTTAATGACATGGTATGGAAGTATAACATTGTTACACTGGACA
GATTAATTCTCTGCCTGGCCATGCGTAGTCACGAAGGAAATGAAGCCAGGTTTGTATTTCATAATTCA
GTTGCTGTTACTCAAACCAAACGATTTTAGAAATCGAGTAAGTGACTTTGTGAAGGAAAATCCCCAGAG
CACTGGTTACAGAATGACTGGCACACCAAGCACATGAATTATCACAAGAAATATCCAGAGAAGTTGATT
TTGAGGGCCTCGCGGAACAGGTGGATCCTCCTGTACAGATCCAGTCTCCCTATCTGCCATCTATTTGG
GAATGTGTGCTTCGATTCCCTCCAGTATTTGATATAGTAATCCACAGATTTTAGAGTTGCTCCGGTA
TCCAAATCACTGGAGACTCTACTGGATCATCTAGGAGGCTTATAAAATTCATGATCGTCCAGTGACTT
ATCTGTATAACTCTGCATCTATTAATGAAATGCACCTGAGAGACCGCCATTTCTCAAACGAAAATCGT
CCATGCGATCATTGGCTCTCTGAAGGATAATCGACCGCAGGGCTGGTGTCTAAGTGACACTTACCTGAAA
TGCCTATGAATGCACGAGAGGAAAATCCTTGGGTTCCAGATGACACCTACTATTGCAGATTGATTGGCA
GACTAGTCGATACGATGGCTGGCAAATCTCCTGGTCCCTTTCAAACGTGACTGGAGATTCAATGAGTT
TCCCAACCCAGCTGCCCATGCTCCTCATGTTACTTGTGTGGAGCTCATGGCCTTGGCAGTTTCAGGCAA
GAAGTTGGGAATGCCCTTCTAAATGTTGCCTAAAAAGTCAGCCTTTAGTGCCAAGAGAGAACATTACAG
CATGGATGAATGCAATTGGTTTGTATCATCACTGCCCTACCAGAGCCATATTGGATTGTTCTTCATGATCG
AATTGTGAGTGCATCAGCAGCCCAGCTTGACGTCTGAAACAGAGTGGGTTGGCTATCCATTCCGCCTC
TTTGATTTCACTGCCTGTATCAGTCTACTCTGAGATGAGTTGTAGCTATACGTTAGCTCTTGACATG
CTGTGTGGCACCATTCTAGCATCGGACAATTTCTCTCATTCAAAGTTTCTTACTGAAGTACTTCTCC
TATAGTGAAGACCGAATTCAGTTGCTTTATGTATACCATCTTGTGGACCAATTTTACAAGATTTTCAG
CAAGAGAGAAGTCTGTTGATGATAGAGATTGGTGTGGCGTTTTATGACATGCTGTGAATGTTGACCAGT
GTAGCACCCATTTAAATACATGGATCCCATCTGTGACTTCTCTATCAGATGAAGTATATGTTTACTGG
TGACAGCGTGAAGAGCAAGTAGAGAAGATTATCTGTAACCTAAAACAGCTTTAAAACCTCGTCTTCGA
TTCATCACACATTAGCAAGATGGAGCCAGCTGCAGTGCCTCCACAAGCCATGAACAGTGGGTCTCCAG
CACCTCAGTCTAATCAGGTGCCCGTGTCTTTACCAGTAACTCAG

```

ACGCGTACGCGGCCGCTCGAG – GFP Tag – GTTTAA

Protein Sequence: >RG222391 representing NM\_004830  
 Red=Cloning site Green=Tags(s)

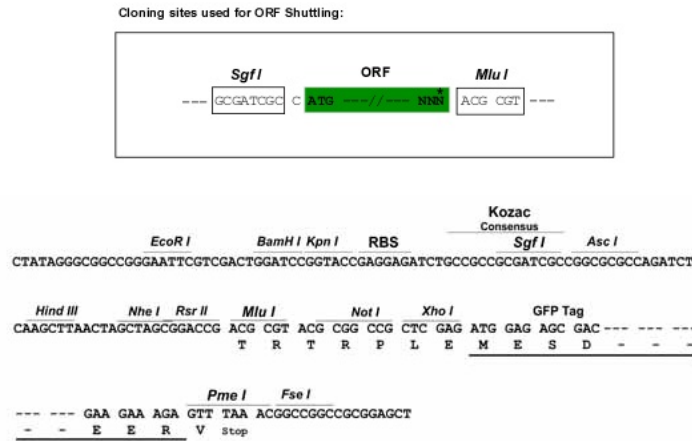
METQLQSIFEEVVKTEVIEEAFPGMFMDTPEDEKTKLISCLGAFRQFWGGLSQESHEQCIQWIVKFIHGQ  
 HSPKRISFLYDCLAMAVETGLLPPRLVCELSINSDTLEWERTQLWALTFKLVRKIIGGVYKGVDRDLLKV  
 ILEKILTIPNTVSSAVVQQLLAAREVIAYILERNACLLPAYFAVTEIRKLYPEGKLPHWLLGNLVSDFVD  
 TFRPTARINSICGRCSLLPVVNSGAICNSWKLDPATLRFPLKGLLPYDKDLFEPQTALLRYVLEQPYSR  
 DMVCNMLGLNKQHKQRCPVLEDQLVDLVVYAMERSETEEKFDDGGTSQLLWQHLSSQLIFFVLFQFASFP  
 HMVLSLHQKLAGRGLIKGRDHLMWVLLQFISGSIQKNALADFLPVMKLFDLLYPEKEYIPVPDINKPQST  
 HAFAMTCIWIHLNRKAQNDNSKLQIPIPHSLRLHHEFLQQSLRNKSLQMNDYKIALLCNAYSTNSECFTL  
 PMGALVETIYNGIMRIPLPGTNCMASGSITPLPMNLLDSLTVHAKMSLIHSAITRVIKLAHAKSSVALA  
 PALVETYSRLLVYMEIESLGIKGFISQLLPTVFKSHAWGILHTLLEMFSYRMHHIQPHYRVQLLSHLHTL  
 AAVAQTNQNLHLCVESTALRLITALGSSEVQPQFTRFLSDPKTVLSAESEELNRALILTLARATHVDF  
 FTGSDSIQGTWCKDILQTIMSFTPHNWSHTLSCFPGPLQAFFKQNNVQESRFNLKKNVEEYRKKWSM  
 SNENDIITHFSMQGSPPLFLCLLWKMLLETDHINQIGYRVLERIGARALVAHVRTFADFLVYEFSTAGG  
 QQLNKCIEILNDMVWYKIVTLDRILCLAMRSHEGNEAQVCYFIIQLLLLKPNDFRNRVSDFVKENSPE  
 HWLQNDWHTKHMNYHKKYPEKLYFEGLAEQVDPVQIQSPYLPYIFGNVCLRFLPVFDIVIHRFLELLPV  
 SKSLETLLDHLGGLYKFHDRPVTYLNTLHYYEMHLRDR AFLKRKLVHAIIGSLKDNRPQGWCLSDTYLK  
 CAMNAREENPWPDDTYCRLIGRLVDTMAGKSPGFPNCDWRNFENPNPAAHALHVTCVELMALAVSGK  
 EVGNALLNVVLSQPLVRENITAWMNAIGLIITALPEPYWIVLHDIRIVSVISSPLTSETEWVGYPFRL  
 FDFTACHQSYSEMSCSYTLALAHAVWHSSIGQLSLIPKFLTEVLLPIVKTEFQLLYVYHLVGPFLQRFQ  
 QERTRCMIIEIGVAFYDMLLNVDQCSTHLNMDPICDFLYHMKMYFTGDSVKEQVEKIIICNLKPAKLRRLR  
 FITHISKMEPAAVPPQAMNSGSPAPQSNQVPVSLPVTQ

TRTRPLE - GFP Tag - V

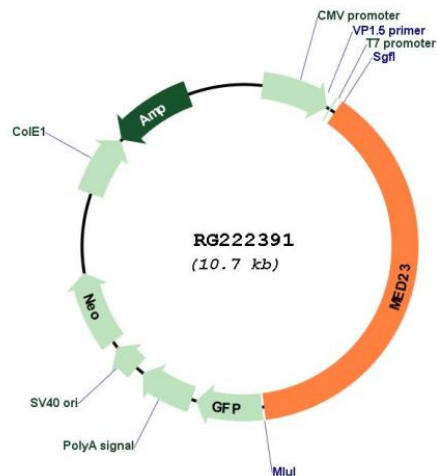
Restriction Sites:

Sgfl-MluI

Cloning Scheme:



## Plasmid Map:



ACCN: NM\_004830

ORF Size: 4104 bp

**OTI Disclaimer:** The molecular sequence of this clone aligns with the gene accession number as a point of reference only. However, individual transcript sequences of the same gene can differ through naturally occurring variations (e.g. polymorphisms), each with its own valid existence. This clone is substantially in agreement with the reference, but a complete review of all prevailing variants is recommended prior to use. [More info](#)

**OTI Annotation:** This clone was engineered to express the complete ORF with an expression tag. Expression varies depending on the nature of the gene.

**Components:** The ORF clone is ion-exchange column purified and shipped in a 2D barcoded Matrix tube containing 10ug of transfection-ready, dried plasmid DNA (reconstitute with 100 ul of water).

**Reconstitution Method:**

1. Centrifuge at 5,000xg for 5min.
2. Carefully open the tube and add 100ul of sterile water to dissolve the DNA.
3. Close the tube and incubate for 10 minutes at room temperature.
4. Briefly vortex the tube and then do a quick spin (less than 5000xg) to concentrate the liquid at the bottom.
5. Store the suspended plasmid at -20°C. The DNA is stable for at least one year from date of shipping when stored at -20°C.

RefSeq: [NM\\_004830.4](#)

RefSeq Size: 5240 bp

RefSeq ORF: 4107 bp

Locus ID: 9439

UniProt ID: [Q9ULK4](#)

Cytogenetics: 6q23.2

**Protein Families:** Druggable Genome, Transcription Factors

**Gene Summary:** The activation of gene transcription is a multistep process that is triggered by factors that recognize transcriptional enhancer sites in DNA. These factors work with co-activators to direct transcriptional initiation by the RNA polymerase II apparatus. The protein encoded by this gene is a subunit of the CRSP (cofactor required for SP1 activation) complex, which, along with TFIID, is required for efficient activation by SP1. This protein is also a component of other multisubunit complexes e.g. thyroid hormone receptor-(TR-) associated proteins which interact with TR and facilitate TR function on DNA templates in conjunction with initiation factors and cofactors. This protein also acts as a metastasis suppressor. Several alternatively spliced transcript variants encoding different isoforms have been described for this gene. [provided by RefSeq, Jul 2012]