

Product datasheet for **RG222387**

MEIS2 (NM_170674) Human Tagged ORF Clone

Product data:

Product Type:	Expression Plasmids
Product Name:	MEIS2 (NM_170674) Human Tagged ORF Clone
Tag:	TurboGFP
Symbol:	MEIS2
Synonyms:	CPCMR; HsT18361; MRG1
Mammalian Cell Selection:	Neomycin
Vector:	pCMV6-AC-GFP (PS100010)
E. coli Selection:	Ampicillin (100 ug/mL)
ORF Nucleotide Sequence:	>RG222387 representing NM_170674 Red=Cloning site Blue=ORF Green=Tags(s)

TTTTGTAATACGACTCACTATAGGGCGGCCGGAATTCGTCGACTGGATCCGGTACCGAGGAGATCTGCCGCC**CGATCGCC**

ATGGCGCAAAGGTACGATGAGCTGCCCATACGGCGGGATGGACGGAGTAGGGGTTCCCGCTTCCATGTACGGAGACCCCTACGCGCCGCGGCCGATCCCCCGTTCCACCACCTGAACCACGGGCCGCCGCTCCACGCACACAGCACTACGGCGCGCACGCCCGCACCCCAATGTCATGCCGGCCAGTATGGGATCCGCTGTCAACGACGCCTTGAAGCGGGACAAGGACGCGATCTATGGCACCCGTTGTTTCTCTGTAGCTCTGGTCTTTGAGAAGTGCAGCTGGCGACCTGCACTCCCCGGGAACCTGGAGTGGCTGGCGGAGACGTCTGCTCCTCCGACTCCTTCAACGAGGACATCGCGGTCTTCGCCAAGCAGGTTTCGCGCGAAAAGCCACTTTTTCTCAAAATCCAGAGCTGGACAATTTGATGATACAAGCAATACAAGTACTAAGGTTTCATCTTTTGAGTTAGAAAAGGTCCACGAACTGTGCGATAACTTCTGCCACCGATACATTAGCTGTTTGAAGGGGAAAATGCCATCGACCTCGTCATTGATGAAAGAGACGGCAGCTCCAAGTCAGATCATGAAGAATTTTCAGGCTCCTCCACAAATCTCGTGACCATAACCCTTCTTGGCGAGACCACGATGATGCAACCTCAACCCACTCAGCAGGCACCCAGGGCCCTCCAGTGGGGCCATGCTTCCAGAGCGGAGACAACAGCAGTGAGCAAGGGGATGGTTTAGACAAAGTGTAGCTTACCTGGTACAGGTGACGATGATGATCCGGATAAGGACAAAAACGCCAGAAGAAAAGAGGCATTTTCCCCAAAGTAGCAACAAATATCATGAGAGCATGGCTTCCAGCATCTCACACATCCGTACCTCCGAAGAGCAGAAGAACAGTTAGCGCAAGACACAGGACTTACAATTCTCCAAGTAAACAACCTGGTTATTAATGCCAGAAGAAGAAATAGTACAGCCATGATTGACCAGTCAAATCGAGCAGTGAGCCAAGGAGCAGCATATAGTCCAGAGGTCAGCCATGGGGAGCTTTGTGTTGGATGGTCAGCAACACATGGGGATCCGGCTCGAGGACCTATGAGTGAATGGGCATGAATATGGGCATGGATGGGCAATGGCACTACATG

ACCGTACGCGGCCGCTCGAG - GFP Tag - GTTTAA



[View online »](#)

Protein Sequence: >RG222387 representing NM_170674
 Red=Cloning site Green=Tags(s)

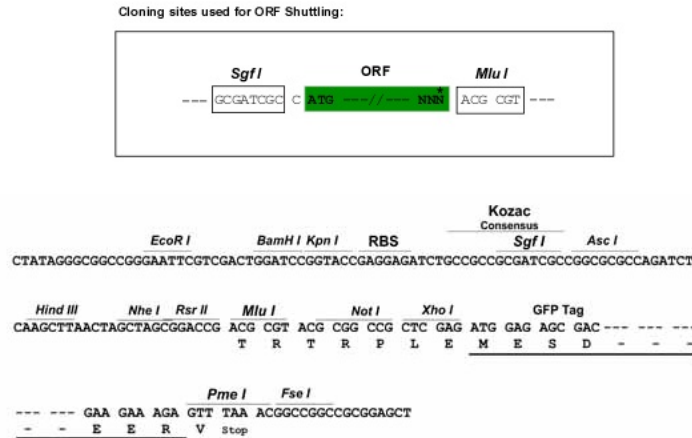
MAQRYDELPHYGGMDGVGVPASMYGDPHAPRPIPPVHHLNHGPPLHATQHYGAHAPHNPVMPASMGSAVN
 DALKRDKDAIYGHPLFPLLALVFEKCELATCTPREPGVAGGDVCSDFSFNEDIAVFAKQVRAEKPLFSSN
 PELDNLMIQAIQVLRFHLLLELEKVELCDNFCHRYISCLK GKMPIDLVIDERDGSKSDHEELSGSSTNL
 ADHNPSSWRDHDATSTHSAGTPGPSSGGHASQSGDNSSEQGDGLDNSVASPGTGDDDDPDKDKRQKKR
 GIFPKVATNIMRAWLFQHLTHYPSEEQKKQLAQDTGLTILQVNNWFINARRRIVQPMIDQSNRAVSQGA
 AYSPEGQPMGSFVLDGQQHMGIRPAGPMSGMGMNMGMDGQWHYM

TRTRPLE - GFP Tag - V

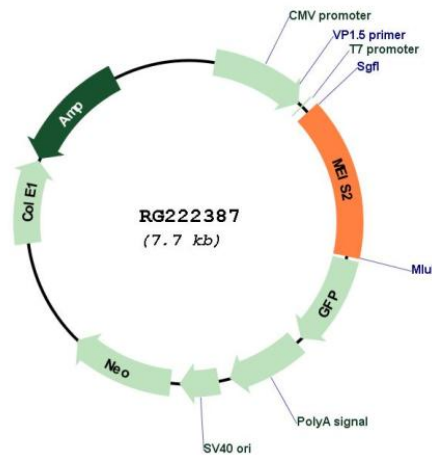
Restriction Sites:

SgfI-MluI

Cloning Scheme:



Plasmid Map:



ACCN:

NM_170674

ORF Size:	1182 bp
OTI Disclaimer:	The molecular sequence of this clone aligns with the gene accession number as a point of reference only. However, individual transcript sequences of the same gene can differ through naturally occurring variations (e.g. polymorphisms), each with its own valid existence. This clone is substantially in agreement with the reference, but a complete review of all prevailing variants is recommended prior to use. More info
OTI Annotation:	This clone was engineered to express the complete ORF with an expression tag. Expression varies depending on the nature of the gene.
Components:	The ORF clone is ion-exchange column purified and shipped in a 2D barcoded Matrix tube containing 10ug of transfection-ready, dried plasmid DNA (reconstitute with 100 ul of water).
Reconstitution Method:	<ol style="list-style-type: none">1. Centrifuge at 5,000xg for 5min.2. Carefully open the tube and add 100ul of sterile water to dissolve the DNA.3. Close the tube and incubate for 10 minutes at room temperature.4. Briefly vortex the tube and then do a quick spin (less than 5000xg) to concentrate the liquid at the bottom.5. Store the suspended plasmid at -20°C. The DNA is stable for at least one year from date of shipping when stored at -20°C.
RefSeq:	NM_170674.5
RefSeq Size:	3700 bp
RefSeq ORF:	1185 bp
Locus ID:	4212
UniProt ID:	O14770
Cytogenetics:	15q14
Domains:	homeobox
Protein Families:	Transcription Factors
Gene Summary:	This gene encodes a homeobox protein belonging to the TALE ('three amino acid loop extension') family of homeodomain-containing proteins. TALE homeobox proteins are highly conserved transcription regulators, and several members have been shown to be essential contributors to developmental programs. Multiple transcript variants encoding distinct isoforms have been described for this gene. [provided by RefSeq, Jul 2008]