

Product datasheet for **RG222386**

TIAM2 (NM_012454) Human Tagged ORF Clone

Product data:

Product Type:	Expression Plasmids
Product Name:	TIAM2 (NM_012454) Human Tagged ORF Clone
Tag:	TurboGFP
Symbol:	TIAM2
Synonyms:	STEF; TIAM-2
Mammalian Cell Selection:	Neomycin
Vector:	pCMV6-AC-GFP (PS100010)
E. coli Selection:	Ampicillin (100 ug/mL)
ORF Nucleotide Sequence:	>RG222386 representing NM_012454 Red=Cloning site Blue=ORF Green=Tags(s)

TTTTGTAATACGACTCACTATAGGGCGGCCGGAATTCGTCGACTGGATCCGGTACCGAGGAGATCTGCC
GCC**CGATCGCC**

ATGGGCAACTCCGACAGTCAGTACACCCTTCAAGGATCTAAAAATCATAGCAATACTATTACTGGTGCTA
AGCAAATTCCTTGCTCCCTGAAAATACGTGGCATTTCATGCAAAAGAGGAAAAGTCATTGCATGGATGGGG
TCACGGAAGCAACGGAGCAGGTTACAAGTCCAGGTCCTGGCCCCAAGCTGCCTTTCTCACTTTAAGAGT
AACCAGCCTTACGCATCGAGACTCGGTGGCCCCACATGCAAGGTCTCCAGAGGTGTTGCCTACTCCACGC
ACAGGACAAATGCCCCAGGGAAGGATTTCCAGGGCATCAGTGCTGCTTTCTCACTGAGAATGGCTTCCA
CTCTGTTGGCCACGAGCTGGCAGATAACCACATCACCTCCAGAGACTGCAACGGACACCTTCTCACTGC
TACGGGAGGAATGAGAGCATTGCCTCCACCCACCGGGCGAAGACCGCAAGAGCCCCGAGTGCTCATCA
AAACGCTGGGGAAGCTGGATGGGTGTTAAGGGTTCAGGTTCCACAATGGTGGCAACCCAGCAAAGTGCC
TGCAGAGGACTGCAGTGAGCCGGTGCAGCTGCTGAGGTAACCTACCTTAGCATCGGAAACCTCCCCT
GTGCTGAAGCCAGGAGGGGTCCAGCGCCGATTCCTGCCAGCCATCGCCCCCTCCCACGGACTCTC
GCCTGCGGTCCAGCAAAGGCAGCTCCCTGAGTTCTGAGTCATCCTGGTACGACTCCCTTGGGGCAATGC
TGGAGAGCTGAGCGAGGCTGAGGGCTCCTTCTGGCCCCGGCATGCCTGACCCAGTCTCCATGCCAGC
TTCCCACCTGGCGATGCCAAAAGCCTTCAACCAAAGCTTCCCTCTCCTCCCGGAACTGTACA
AAGATGCCAACCTGGGGAGCCTCTCCCCCTCAGGTATCCGCTTTCTGATGAATACATGGGCACGCATGC
CAGCCTGAGCAACCGTGTCTCTTTTGTCCGACATTGATGTGCCCTCCAGAGTGGCACACGGGGACCCC
ATCCAGTACAGTTCCTTCACTCTCCCCTGTCCGAAAGCCAAAGCCTTGTGAGGATACTGCGAAGAAGG
ACTCCCTCAAAGCCAGGATGCGACGGATCAGTGACTGGACGGGAAGCCTCTCAAGGAAGAAAAGGAACT
CCAGGAGCCGAGGTCCAAGGAGGCGAGTACTTTGACAGTCGCTCTGATGGACTGAATACAGATGTG
CAGGGATCCTCCAGGCATCTGCTTTTCTGTGGTCAAGGGGCTCTACTCAGATCCTGTCTCAGAGAAGT
AATCCACACATGCGATTGGCAGCGATCCCCTCCGGCAGAACATTTATGAGAATTTTCATGCGAGAGTTGGA
AATGAGCAGGACCAACTGAGAACATAGAAACATCTACAGAAACCGCCGAGTCCAGCAGCGAGTCACTC



[View online »](#)

AGCTCTCTGGAACAGCTGGATCTGCTCTTTGAGAAGGAACAGGGGTGGTCCGGAAGGCCGGTGGCTCT
 TCTTCAAGCCCCTGGTCACTGTGCGAGAAGGAAAGGAAAGCTTGAGCTGGTGGCACGAAGGAAATGGAAACA
 GTACTGGGTAACGCTGAAAGGATGCACGCTGCTGTTTTATGAGACCTATGGGAAGAAATCCATGGATCAG
 AGCAGTGCCCCCTCGGTGTGCTCTGTTTGCAGAAGACAGCATAGTGCAGTCTGTTCCAGAGCATCCCAAGA
 AAGAAAATGTGTTCTGCCTCAGCAACTCCTTTGGAGATGTCTACCTTTCCAGGCCACCAGCCAGACAGA
 TCTAGAAAACGGGTCACTGCTGTACACTCTGCTTGTGCATCCCTTTTTGCAAAGAAGCATGGGAAAGAG
 GACACGCTGCGGCTGCTGAAGAACCAGACAAAACCTGCTTCAGAAGATAGACATGGACAGCAAGATGA
 AGAAGATGGCAGAGCTGCAGCTGTCCTGGTGGCGACCCAAAGAACAGGAAAGCCATAGAGAACCAGAT
 CCAGCAATGGGAGCAGAATCTTGAGAAATTTACATGGATCTGTTCCAGGATGCGTGCTATCTGGCCAGC
 CTAACAAGTGGGGAGTTACCGAACCCAAAGAGTCTCCTTGACGCCGCCAGCCGCCCTCCAAGCTGGCCC
 TCGGCAGGCTGGGCATCTGTCTGTTTCTCTTTCCATGCTCTGGTATGTTCTAGAGATGACTCTGCTCT
 CCGGAAAAGGACACTGTCACTGACCCAGCGAGGGAGAAACAAGAAGGGAATATTTTCTTCGTTAAAAGGG
 CTGGACACTGGCCAGAAAAGGCAAGGAGAAGAGACCTCTATAACTCAGGTCGATGAACCTCTGCATA
 TATATGGTTCAACAGTAGACGGTGTCCCGAGACAATGCATGGGAAATCCAGACTTATGTCCACTTTCA
 GGACAATCACGGAGTTACTGTAGGGATCAAGCCAGAGCACAGAGTAGAAGATATTTTGACTTTGGCATGC
 AAGATGAGGCAGTTGGAACCCAGCCATTATGGCCTACAGCTTCGAAAATTAGTAGATGACAAATGTTGAGT
 ATTGCATCCCTGCACCATATGAATATATGCAACAACAGGTTTATGATGAAATAGAAGTCTTTCACCTAAA
 TGTTTTATGACGTGCAGCTCACGAAGACTGGGAGTGTGTGTGACTTTGGGTTTGCAGTTACAGCGCAGGTG
 GATGAGCGTCAGCATCTCAGCCGGATATTTATAAGCGACGTTCTTCCCGATGGCCTGGCGTATGGGGAAG
 GGCTGAGAAAGGGCAATGAGATCATGACCTTAAATGGGGAAGCTGTGTCTGATCTTGACCTTAAAGCAGAT
 GGAGGCCCTGTTTTCTGAGAAGAGCGTCGGACTCACTCTGATTGCCCGCCTCCGGACACAAAAGCAACC
 CTGTGTACATCCTGGTCAGACAGTGACCTGTTCTCCAGGGACCAGAAGAGTCTGCTGCCCCCTCTAACC
 AGTCCCAACTGCTGGAGGAATCCTGGATAACTTTAAAAGAATACAGCCAATGATTTTCAGCAAGCTCCC
 TGATATCACAAACAGGTTCTGAAAAGGAGTCAGACAGATGGCAGTCTGGATCAGGTTTTCCACAGGGAGAAA
 ATGGAGCAGACATTCAGGAGTGCTGAGCAGATCACTGCACTGTGCAGGAGTTTTAACGACAGTCAGGCCA
 ACGGCATGGAAGGACCGCGGAGAAATCAGGATCCTCCTCCGAGGCCTCTGGCCCGCCACCTGTCTGATGC
 AGACCCGCTCCGCAAAAGTCATCCAGGAGCTTGTGGACACAGAGAAGTCTACGTGAAGGATTTGAGCTGC
 CTCTTTGAATTAACTTGGAGCCACTTCCAGATGAGACCTTTCTTACCCAAGATGAGATGGAGTCACTTT
 TTGGAAGTTTCCAGAGATGCTTGAGTTTCCAGAAGGTGTTTCTGGAGACCCTGGAGGATGGGATTTCCAGC
 ATCATCTGACTTAAACACCTAGAAACCCCTCACAGTTTAGAAAATTAAGTGTGTTTTCCCTGGAGGCTCT
 TTCTTTTATTACGCGGACCACTTAAACTGTACAGTGGATTCTGTGCTAACCATATCAAAGTACAGAAGG
 TTCTGGAGCGAGCTAAAACCTGACAAAGCCTTCAAGGCTTTTCTGGACGCCCGAAACCCCAAGCAGCA
 TTCTCCACGCTGGAGTCTACCTCATCAAGCCGGTTCAGAGAGTGTCAAGTACCCGCTGCTGCTCAAG
 GAGCTGGTGTCCCTGACGGACCAGGAGAGCGAGGAGCACTACCACCTGACGGAAGCACTAAAGGCAATGG
 AGAAAGTAGCGAGCCACATCAATGAGATGCAGAAGATCTATGAGGATTATGGGACCGTGTGTTGACCAGCT
 AGTAGCTGAGCAGAGCGGAACAGAGAAGGAGGTAAACAGAACTTTCGATGGGAGAGCTTCTGATGCACTCT
 ACGGTTTCTGGTTGAATCCATTTCTGTCTCTAGGAAAAGCTAGAAAAGGACCTTGAGTCCACAGTATTTG
 TTTTTAAGAGAGCCGTCATACTGGTTTATAAAGAAAACGAACTGAAAAGAAAATGCCCTCGAATTC
 CCGCCTGCACACAACCTACTGACTTGGACCCATTTAAATCCGCTGGTTGATCCCATCTCCGCGTT
 CAAGTCAGACTGGGGAATCCAGCAGGGACAGAAAATAATTCATATGGGAAGTATCCATACGAAGTCAG
 AAATAGAAGGACGGCCAGAAACCATCTTTCAGTTGTGTTGCAGTGACAGTGAAGCAAAAACCAACATTGT
 TAAGGTGATTGTTCTATTCTGAGGGAGAACTTCAAGCGTCACATAAAGTGTGAATTACCACTGGAGAAA
 ACGTGTAAGGATCGCCTGGTACCTCTTAAGAACCAGTTCCTGTTTCCGCAAAATAGCTTCATCCAGGT
 CTTTAAAAGTCTGAAGAATCCTCCAGCAACGAGTGGACCGGTGAGACTGGCAAGGGAACCTTGTGGA
 CTCTGACGAGGGCAGCTTGAAGCAGCGCCACCCAGAGCAGCGGCTGCCACCGCTGAGGGCAGGCAGGAC
 TCCAAGAGCACTTCTCCGGGAAATACCCACACCCCGGCTTGGCAGATTTTCCGACAATCTCATCAAAG
 AGAGTGACATCCTGAGCGATGAAGATGATGACCACCGTCAGACTGTGAAGCAGGGCAGCCCTACTAAGA
 CATCGAAATTCAGTTCCAGAGACTGAGGATTTCCGAGGACCCAGACGTTACCCCGAGGCTGAGCAGCAG
 CCTGGCCCGGAGTCCGGTGGAGGTCAGAAAAGGAGGAGAGCAGCCAAAACCTGGTCCGGGGCACTTCTGCC
 CCATTAACGAAAAGCCAACAGCACCAAGAGGGACAGAGGAACTTTGCTCAAGGCGCAGATCCGTACCA
 GTCCCTTGACAGTCAGTCTGAAAATGCCACCATCGACCTAAATCTGTTCTAGAGCGAGAATTCAGTGT
 CAGAGTTAACATCTGTTGTCAGTGAGGAGTGTGTTTTATGAAACAGAGAGCCACGGAAAATCA

ACGCGTACGCGGCCGCTCGAG - GFP Tag - GTTTAA

Protein Sequence:

>RG222386 representing NM_012454
 Red=Cloning site Green=Tags(s)

MGNSDSQYTLQGSKNHSNTITGAKQIPCSLKIRGIHAKKEESLHGWHGHSNGAGYKSRSLARSCLSHFKS
 NQPYASRLGGPTCKVSRGVAYSTHRTNAPGKDFQGISAAFSTENGFHVSVGHLEADNHITSRDCNGHLLNC
 YGRNESIASTPPGEDRKSPPVLIKTLGKLDGCLRVEFHNGGNPSKVPAEDCSEPVQLLRYSPTLASETSP
 VPEARRGSSADSLPSHRPSPTDSRLRSSKGSLSSESSWYDSPWGNAGELSEAEGSFLAPGMPDPSLHAS
 FPPGDAKKPFNQSSSLSSLRELKIDANLGSLSPSGIRLSDEYMGTHASL SNRVSFASDIDVPSRVAHGDP
 IQYSSFTLPCRPKAFVEDTAKKDLSLARMRISDWTGSLSRKKRKLQEPRSKEGSDYFDSRSDGLNTDV
 QGSSQASAFWWSGGSTQILSQRSESTHAIGSDPLRQNIYENFMRELEMSRTNTENIETSTETAESSSEL
 SSLEQLDLLFEKEQGVVRKAGWLFFKPLVTVQKERKLELVARRKWKQYVWTLKGCSTLLFYETYGKNSMDQ
 SSAPRCALFAEDSIVQSVPEHPKKNVFLSNSFGDVYLFQATSQTDLNWTAVHSACASLFAKKHGKE
 DTLRLLKNQTKNLLQKIDMDSKMKMAELQLSVSDPKNRKAIENQIQQWEQNLEKFHMDLFRMRCYLAS
 LQGGELPNPKSLLAAASRPSKLLGRLGILSVSSFHALVCSRDDSALRKRSLTQRGRNKKGIFSSLKGL
 LDTLARKGKEKRPSITQVDELLHIYGSTVDGVPDRAWEIQTYYVHFQDNHGVTVGKPEHRVEDILTAC
 KMRQLEPSHYGLQLRKLVDNVEYCIAPAYEYMQQVYDEIEVFPLNVYDVQLTKTGSVCDFFGAVTAQV
 DERQHLSRIFISDVLPDGLAYGELRKGNEIMTLNGEAVSDLDLQMEALFSEKSVGLTLIARPPDTKAT
 LCTSWSDSLFSRDQKSLPPPNQSQLLEEFLDNFKKNTANDFSNVPDITGLKRSQTDGTLDQVSHREK
 MEQTFRSAEQITALCRSFNDSQANGMEGPRENQDPPPRPLARHLSDADRLRKVIQELVDTEKSYVKDLSC
 LFELYLEPLQNETFLTQDEMESLFGSLPEMLEFQKVLETLEDGISASSDFNTLETPSQFRKLLFSLGGS
 FLYYADHFKLYSGFCANHIKQVQLERAKTDFKAFKFLDARNPTKQHSSTLESYLKIPVQVRLKYPPLLLK
 ELVSLTDQESEEHYHLTEALKAMEKVASHINEMQKIYEDYGTVFDQLVAEQSGTEKEVTELSMGELLMHS
 TVSWLNPFSLGKARKDLELTVFVFKRAVILVYKENCKLKKKLPNSRPAHNSTDLDPFKFRWLIPISAL
 QVRLGNPAGTENNISIWELIHTKSEIEGRPETFQCCSDSESKTNIKKVIRSILRENFRRIKCELPLEK
 TCKDRLVPLKNRVPVSAKLASSRSLKVLKNSSSNEWGETGKGTLLDSEGLSSGTQSSGCPTAEGRQD
 PKSTSPGKYPHPLADFDNLIKESDILSDEDDHRQTVKQGSPTKDIEIQFQRLRISDPDVPVHPEAEQQ
 PGPEESGEGQKGGEQPKLVRGHFCPIKRRKANSTKRDRGTLKKAQIRHQSLDSQSENATIDLNSVLEREFV
 QSLTSVVSEECFYETESHGKS

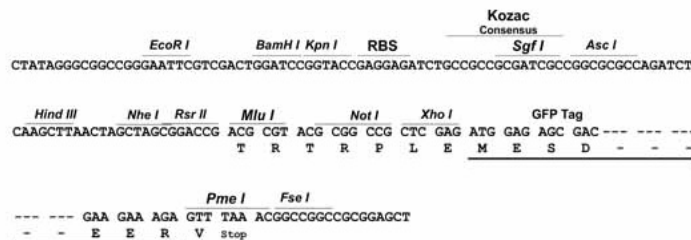
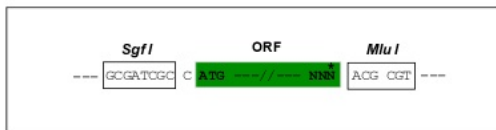
TRTRPLE - GFP Tag - V

Restriction Sites:

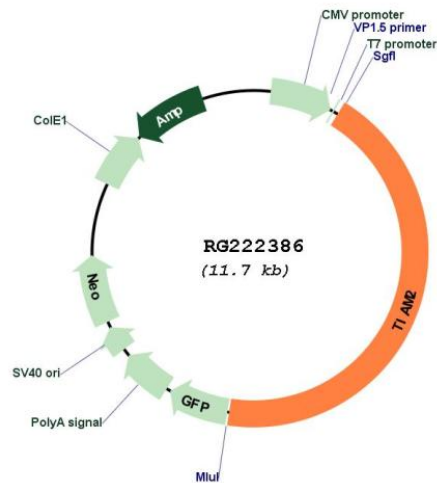
SgfI-MluI

Cloning Scheme:

Cloning sites used for ORF Shuttling:



Plasmid Map:



ACCN: NM_012454

ORF Size: 5103 bp

OTI Disclaimer: The molecular sequence of this clone aligns with the gene accession number as a point of reference only. However, individual transcript sequences of the same gene can differ through naturally occurring variations (e.g. polymorphisms), each with its own valid existence. This clone is substantially in agreement with the reference, but a complete review of all prevailing variants is recommended prior to use. [More info](#)

OTI Annotation: This clone was engineered to express the complete ORF with an expression tag. Expression varies depending on the nature of the gene.

Components:	The ORF clone is ion-exchange column purified and shipped in a 2D barcoded Matrix tube containing 10ug of transfection-ready, dried plasmid DNA (reconstitute with 100 ul of water).
Reconstitution Method:	<ol style="list-style-type: none">1. Centrifuge at 5,000xg for 5min.2. Carefully open the tube and add 100ul of sterile water to dissolve the DNA.3. Close the tube and incubate for 10 minutes at room temperature.4. Briefly vortex the tube and then do a quick spin (less than 5000xg) to concentrate the liquid at the bottom.5. Store the suspended plasmid at -20°C. The DNA is stable for at least one year from date of shipping when stored at -20°C.
RefSeq:	<u>NM_012454.3</u> , <u>NP_036586.2</u>
RefSeq Size:	5916 bp
RefSeq ORF:	5106 bp
Locus ID:	26230
UniProt ID:	<u>Q8IVF5</u>
Cytogenetics:	6q25.2-q25.3
Domains:	RhoGEF, PDZ, RBD
Protein Families:	Druggable Genome
Protein Pathways:	Chemokine signaling pathway, Regulation of actin cytoskeleton
Gene Summary:	This gene encodes a guanine nucleotide exchange factor. A highly similar mouse protein specifically activates ras-related C3 botulinum substrate 1, converting this Rho-like guanosine triphosphatase (GTPase) from a guanosine diphosphate-bound inactive state to a guanosine triphosphate-bound active state. The encoded protein may play a role in neural cell development. Alternatively spliced transcript variants encoding different isoforms have been described. [provided by RefSeq, Jul 2008]