

## Product datasheet for **RG222362**

### **HTRA1 (NM\_002775) Human Tagged ORF Clone**

#### **Product data:**

Product Type:	Expression Plasmids
Product Name:	HTRA1 (NM_002775) Human Tagged ORF Clone
Tag:	TurboGFP
Symbol:	HTRA1
Synonyms:	ARMD7; CADASIL2; CARASIL; HtrA; L56; ORF480; PRSS11
Mammalian Cell Selection:	Neomycin
Vector:	pCMV6-AC-GFP (PS100010)
E. coli Selection:	Ampicillin (100 ug/mL)



[View online »](#)

**ORF Nucleotide Sequence:**

>RG222362 representing NM\_002775  
 Red=Cloning site Blue=ORF Green=Tags(s)

TTTTGTAATACGACTCACTATAGGGCGGCCGGGAATTCGTCGACTGGATCCGGTACCGAGGAGATCTGCC  
 GCC**GCGATCGCC**

ATGCAGATCCCGCGCCGCTCTTCTCCGCTGCTGCTGCTGCTGGCGGCGCCGCCTCGGCGCAGC  
 TGTCCCGGGCGGCCGCTCGGCGCCTTTGGCTGCCGGTTGCCAGACCGCTGCGAGCCGGCGCGCTGCC  
 GCCGAGCCGGAGCACTGCGAGGGCGGCCGGGCCGGGACGCGTGC GGCTGCTGCGAGGTGTGCGGCGCG  
 CCCGAGGGCGCCGCTGCGGCTGCAGGAGGGCCGTCGCGGCGAGGGGCTGCACTGCGTGGTGCCTTCG  
 GGGTGCCAGCCTCGGCCACGGTGC GGCGCGCGCAGGCCGGCCTCTGTGTGCGCCAGCAGCGAGCC  
 GGTGTGCGGCAGCGACGCAACACCTACGCCAACCTGTGCCAGCTGCGCGCCGACGCCCGCTCCGAG  
 AGGCTGCACCGGCCCGCGTTCATCGTCTGCAGCGGGAGCCTGCGGCCAAGGGCAGGAAGATCCCAACA  
 GTTTGCGCCATAAATAAATTTATCGCGGACGTGGTGGAGAAGATCGCCCTGCCGTGGTTCATATCGA  
 ATTGTTTCGCAAGCTTCCGTTTTCTAAACGAGAGGTGCCGGTGGTAGTGGGTCTGGGTTTATTGTGTCG  
 GAAGATGGACTGATCGTGACAAATGCCACGTGGTGACCAACAAGCACCGGGTCAAAGTTGAGCTGAAGA  
 ACGGTGCCACTTACGAAGCCAAAATCAAGGATGTGGATGAGAAAGCAGACATCGCACTCATCAAAATTGA  
 CCACCAGGGCAAGCTGCCTGTCTGCTGCTGGCCGCTCCTCAGAGCTGCGGCCGGGAGAGTTCTGTGGTC  
 GCCATCGGAAGCCGTTTTCCCTTCAAACACAGTCACCACCGGGATCGTGAGCACCCACCGAGGCGG  
 GCAAAGAGCTGGGGCTCCGCAACTCAGACATGGACTACATCCAGACCGACGCCATCATCAACTATGGAAA  
 CTCGGGAGGCCGTTAGTAAACCTGGACGGTGAAGTATTGGAATTAACACTTTGAAAGTGACAGCTGGA  
 ATCTCCTTTGCAATCCCATCTGATAAGATTAAAAAGTTCTCACGGAGTCCCATGACCGACAGCCAAAG  
 GAAAAGCCATCACCAAGAAGAAGTATTTGGTATCCGAATGATGCACTCAGTCCAGCAAAGCAAGA  
 GCTGAAGGACCGCACCGGACTTCCCAGACGTGATCTCAGGAGCGTATAAATTGAAGTAATTCCTGAT  
 ACCCCAGCAGAAGCTGGTGGTCTCAAGGAAAACGACGTACATAATCAGCATCAATGACAGTCCGTGGTCT  
 CCGCAATGATGTGAGCGACGTATTAAGGGAAAGCACCTGAACATGGTGGTCCGAGGGTAAATGA  
 AGATATCATGATCACAGTGATCCCGAAGAAATTGACCCA

AG**GCGACCG**ACGCGTACGCGGCCGCTCGAG - GFP Tag - GTTTAA

**Protein Sequence:**

>RG222362 representing NM\_002775  
 Red=Cloning site Green=Tags(s)

MQIPRAALLPLLLLLLAAPASAQLSRAGRSAPLAAGCPDRCEPARCPPQPEHCEGGRARDACGCCEVCGA  
 PEGAACGLQEGPCGEGQLQCVVFPVGPASATVRRRAQAGLCVCASSEPVCGSDANTYANLCQLRAASRRSE  
 RLHRPPVIVLQRGACGQGEDPNLSLRHKYNFIADVVEKIAPAVVHIELFRKLPFSKREVPVAVSGGFIVS  
 EDGLIVTNAHVVTNKHVRKVELKNGATYEAKIKDVDEKADIALIKIDHQGKLPVLLLGRSSELRPGEFVV  
 AIGSPFSLQNTVTTGIVSTTQRGGKELGLRNSDMYIQTDAIINYGNSSGGLVNL DGEVIGINTLKV TAG  
 ISFAIPSDKIKKFLTESHDRQAKGKAITKKKYIGIRMSLTSSKAKELKDRHRDFPDVISGAYIIIEVIPD  
 TPAEAGGLKENDVIISINGQSVVSANDVSDVIKRESLNMVVRGNEIMITVIPEEIDP

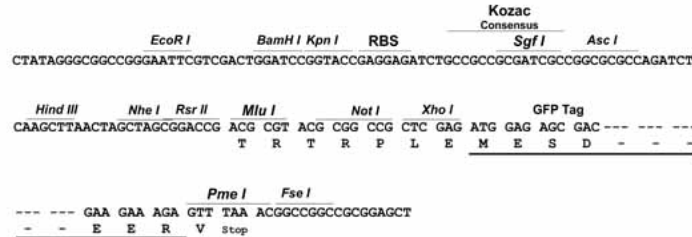
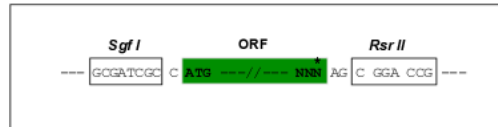
SGP**TRRRLE** - GFP Tag - V

**Restriction Sites:**

Sgfl-RsrII

**Cloning Scheme:**

Cloning sites used for ORF Shuttling:


**ACCN:** NM\_002775

**ORF Size:** 1440 bp

**OTI Disclaimer:** The molecular sequence of this clone aligns with the gene accession number as a point of reference only. However, individual transcript sequences of the same gene can differ through naturally occurring variations (e.g. polymorphisms), each with its own valid existence. This clone is substantially in agreement with the reference, but a complete review of all prevailing variants is recommended prior to use. [More info](#)

**OTI Annotation:** This clone was engineered to express the complete ORF with an expression tag. Expression varies depending on the nature of the gene.

**Components:** The ORF clone is ion-exchange column purified and shipped in a 2D barcoded Matrix tube containing 10ug of transfection-ready, dried plasmid DNA (reconstitute with 100 ul of water).

**Reconstitution Method:**

1. Centrifuge at 5,000xg for 5min.
2. Carefully open the tube and add 100ul of sterile water to dissolve the DNA.
3. Close the tube and incubate for 10 minutes at room temperature.
4. Briefly vortex the tube and then do a quick spin (less than 5000xg) to concentrate the liquid at the bottom.
5. Store the suspended plasmid at -20°C. The DNA is stable for at least one year from date of shipping when stored at -20°C.

**RefSeq:** [NM\\_002775.3](#), [NP\\_002766.1](#)
**RefSeq Size:** 2133 bp

**RefSeq ORF:** 1443 bp

**Locus ID:** 5654

**UniProt ID:** [Q92743](#)

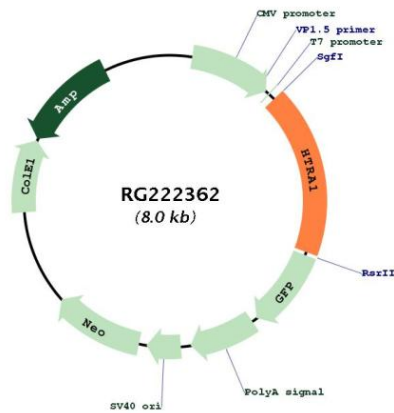
**Cytogenetics:** 10q26.13

**Domains:** IB, Tryp\_SPc, PDZ, kazal

**Protein Families:** Druggable Genome, Protease, Secreted Protein

**Gene Summary:** This gene encodes a member of the trypsin family of serine proteases. This protein is a secreted enzyme that is proposed to regulate the availability of insulin-like growth factors (IGFs) by cleaving IGF-binding proteins. It has also been suggested to be a regulator of cell growth. Variations in the promoter region of this gene are the cause of susceptibility to age-related macular degeneration type 7. [provided by RefSeq, Jul 2008]

**Product images:**



Circular map for RG222362