

Product datasheet for **RG222345**

PDE11A (NM_001077196) Human Tagged ORF Clone

Product data:

Product Type:	Expression Plasmids
Product Name:	PDE11A (NM_001077196) Human Tagged ORF Clone
Tag:	TurboGFP
Symbol:	PDE11A
Synonyms:	PPNAD2
Mammalian Cell Selection:	Neomycin
Vector:	pCMV6-AC-GFP (PS100010)
E. coli Selection:	Ampicillin (100 ug/mL)



[View online »](#)

ORF Nucleotide Sequence:

>RG222345 representing NM_001077196
 Red=Cloning site Blue=ORF Green=Tags(s)

TTTTGTAATACGACTCACTATAGGGCGGCCGGGAATTCGTCGACTGGATCCGGTACCGAGGAGATCTGCC
 GCC**CGGATCGCC**

ATGTCCCCAAAGTGCAGTCTGATGCTGAGAACAGTTTCAAAGAAAGCATGGAGAAATCATCATACTCCG
 ACTGGCTAATAAAATAACAGCATTGCTGAGCTGGTTGCTTCAACAGGCCTCCAGTGAACATCAGTATGC
 CTACCAGGATCCGCGCTTTGATGCAGAGGCAGACCAGATATCTGGTTTTACATAAGATCTGTTCTTTGT
 GTCCTATTTGGAATAGCAACCACAAATAAATGGAGTGGCTCAAGTGTAAACAGACTTGTGGGAAAC
 CTTTTGATGATGCAGATCAACGACTTTTTGAGGCTTTTGTATCTTTTGTGGACTGGCATCAACAACAC
 AATTATGTATGATCAAGTGAAGAAGTCTGGGCCAAGCAGTCTGTGGCTTTGATGTGCTATCATAACAT
 GCAACATGTTCAAAGCTGAAGTTGACAAGTTTAAAGGCAGCCAACATCCCTCTGGTGTGAGAACTTGCCA
 TCGATGACATTCATTTGATGACTTTTCTCTGACGTTGATGCCATGATCACAGCTGCTCTCCGGATGTT
 CATGGAGCTGGGGATGGTACAGAAATTTAAAATTGACTATGAGACACTGTGTAGTGGCTTTTGACAGTG
 AGGAAAACTATCGGATGGTTCTATACCACAACCTGGAGACATGCCTTCAACGTGTGTGAGCTGATGTTCCG
 CGATGTTAACCACTGCTGGGTTTCAAGACATTCTGACCGAGGTGGAAATTTAGCGGTGATTGTGGGATG
 CCTGTGTCATGACCTCGACCACAGGGGAACCAACAATGCCTTCCAAGCTAAGAGTGGCTCTGCCCTGGCC
 CAACTCTATGGAACCTCTGCTACCTGGAGCATCACCAATTTCAACCACGCCGTGATGATCCTTCAAAGTG
 AGGGTCACAATATCTTTGCTAACCTGTCTCCAAGGAATATAGTGACCTTATGCAGCTTTTGAAGCAGTC
 AATATTGGCAACAGACCTCACGCTGACTTTGAGAGGAGAAGTGAATCTTTGAACTTGTGAGTAAAGGA
 GAATACGATTGGAACATCAAAAACCATCGTGATATATTTTCGATCAATGTTAATGACAGCCTGTGACCTTG
 GAGCCGTGACCAACCGTGGGAGATCTCCAGACAGGTGGCAGAAGTGTAAACAGTGTGATCTTTCGAACA
 AGGAGATCGGGAGAGATTAGAGCTCAAACCTCACTCCTTCAGCAATTTTGTATCGGAACCGGAAGGATGAA
 CTGCCTCGGTTGCAACTGGAGTGGATTGATAGCATCTGCATGCCTTTGTATCAGGCACTGGTGAAGTCA
 ACGTGAAGTGAAGCCGATGCTAGATTCAGTAGCTACAAACAGAAGTAAAGTGGGAAGAGTACACCAAAA
 ACGACTGCTGGCCTCAACTGCCTCATCCTCCCCTGCCAGTGTATGGTAGCCAAGGAAGACAGGAAC

ACGCGTACGCGGCCGCTCGAG – GFP Tag – GTTTAA

Protein Sequence:

>RG222345 representing NM_001077196
 Red=Cloning site Green=Tags(s)

MSPKCSADAENSFKESMEKSSYSIDLINNSIAELVASTGLPVNISDAYQDPRFDEADQISGFHIRSVLC
 VPIWNSNHQIIGVAQVLNRLDGKPFDDADQRLFEAFVIFCGLGINNTIMYDQVKKSWAKQSVALDVL SYH
 ATCSKAEVDKFKAAANIPLVSELAIDDIHFDDFSLDAMDITAAALRMFMELGMVQKFKIDYETLCRWLLTV
 RKNYRMVLYHNWRHAFNVCQLMFAMLTAGFQDILTEVEILAVIVGCLCHDLDRGTNNAFQAKSGSALA
 QLYGTSATLEHHHFNHAVMILQSEHNIFANLSSKEYSDMLQLLKQSILATDLTYFERRTEFFELVSKG
 EYDWNINHRDIFRSMMLTACDLGAVTKPWEISRQVAELVTSEFFEQGDRELERLEKLTPSAIFDRNRKDE
 LPRLQLEWIDSICMPYQALVKVNVKLPMLDSVATNRSKWEELHQKRLLASTASSSPASVMVAKEDRN

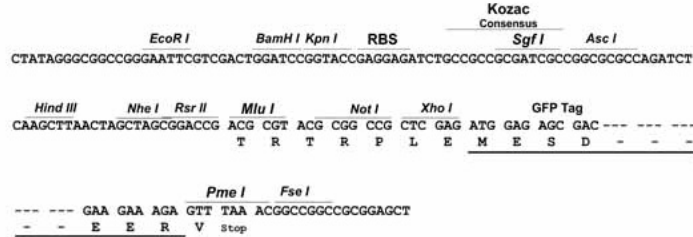
TRTRPLE – GFP Tag – V

Restriction Sites:

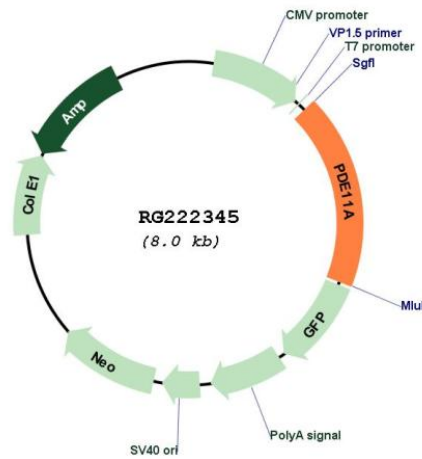
Sgfl-Mlul

Cloning Scheme:

Cloning sites used for ORF Shutting:



Plasmid Map:



ACCN: NM_001077196
 ORF Size: 1467 bp

OTI Disclaimer: Due to the inherent nature of this plasmid, standard methods to replicate additional amounts of DNA in E. coli are highly likely to result in mutations and/or rearrangements. Therefore, OriGene does not guarantee the capability to replicate this plasmid DNA. Additional amounts of DNA can be purchased from OriGene with batch-specific, full-sequence verification at a reduced cost. Please contact our customer care team at custsupport@origene.com or by calling 301.340.3188 option 3 for pricing and delivery.

The molecular sequence of this clone aligns with the gene accession number as a point of reference only. However, individual transcript sequences of the same gene can differ through naturally occurring variations (e.g. polymorphisms), each with its own valid existence. This clone is substantially in agreement with the reference, but a complete review of all prevailing variants is recommended prior to use. [More info](#)

OTI Annotation: This clone was engineered to express the complete ORF with an expression tag. Expression varies depending on the nature of the gene.

Components: The ORF clone is ion-exchange column purified and shipped in a 2D barcoded Matrix tube containing 10ug of transfection-ready, dried plasmid DNA (reconstitute with 100 ul of water).

Reconstitution Method:

1. Centrifuge at 5,000xg for 5min.
2. Carefully open the tube and add 100ul of sterile water to dissolve the DNA.
3. Close the tube and incubate for 10 minutes at room temperature.
4. Briefly vortex the tube and then do a quick spin (less than 5000xg) to concentrate the liquid at the bottom.
5. Store the suspended plasmid at -20°C. The DNA is stable for at least one year from date of shipping when stored at -20°C.

RefSeq: [NM_001077196.2](#)

RefSeq Size: 7786 bp

RefSeq ORF: 1470 bp

Locus ID: 50940

UniProt ID: [Q9HCR9](#)

Cytogenetics: 2q31.2

Protein Families: Druggable Genome

Protein Pathways: Progesterone-mediated oocyte maturation, Purine metabolism

Gene Summary: The 3',5'-cyclic nucleotides cAMP and cGMP function as second messengers in a wide variety of signal transduction pathways. 3',5'-cyclic nucleotide phosphodiesterases (PDEs) catalyze the hydrolysis of cAMP and cGMP to the corresponding 5'-monophosphates and provide a mechanism to downregulate cAMP and cGMP signaling. This gene encodes a member of the PDE protein superfamily. Mutations in this gene are a cause of Cushing disease and adrenocortical hyperplasia. Multiple transcript variants encoding different isoforms have been found for this gene. [provided by RefSeq, Jul 2008]