

Product datasheet for **RG222343**

CD229 (LY9) (NM_001033667) Human Tagged ORF Clone

Product data:

Product Type: Expression Plasmids
Product Name: CD229 (LY9) (NM_001033667) Human Tagged ORF Clone
Tag: TurboGFP
Symbol: LY9
Synonyms: CD229; hly9; mLY9; SLAMF3
Mammalian Cell Selection: Neomycin
Vector: pCMV6-AC-GFP (PS100010)
E. coli Selection: Ampicillin (100 ug/mL)
ORF Nucleotide Sequence: >RG222343 representing NM_001033667
 Red=Cloning site Blue=ORF Green=Tags(s)

TTTTGTAATACGACTCACTATAGGGCGGCCGGAATTCGTCGACTGGATCCGGTACCGAGGAGATCTGCC
 GCC**CGATCGCC**

ATGGTGGCACAAAGAGTCACACAGATGACTGGGCTCCTGGCCTTTCTCCAGTAAGCCACAGAGGAGTC
 AGCTGCAAATATTCTCTTCTGTTCTACAGACCTCTCTCCTCTTCTGCTCATGGGACTAAGGCCTCTGG
 AAAGGACTCAGCCCCAACAGTGGTGT CAGGGATCCTAGGGGTTCCGTGACTCTCCCCCTAACATCTCA
 GTAGACACAGAGATTGAGAACGTCATCTGGATTGGTCCCAAAAATGCTCTTGCTTTGCGACGTCCAAAG
 AAAATGTAACCATTATGGTCAAAAGCTACCTGGCCGACTAGACATCACCAAGTGGAGTTACTCCCTGTG
 CATCAGCAATCTGACTCTGAATGATGCAGGATCCTACAAAGCCAGATAAACCAAGGAATTTTGAAGTC
 ACCACTGAGGAGGAATCACCCCTGTTCTATGCACCATTTATTGAAAAGTTGTCCGTCCACGTCATCG
 AGGGTGACCACCGCACACTCCTGGAGGGCAGCGCCTGGAGTCCATCATCAGCACCTGGCTGAGCCACG
 TGTGAGCGTGGGGAGGGC

ACGCGTACGCGGCCGCTCGAG - GFP Tag - GTTTAA

Protein Sequence: >RG222343 representing NM_001033667
 Red=Cloning site Green=Tags(s)

MVAPKSHDDWAPGPFSSKPQRSQIQIFSSVLQTSLLFLLMGLRASGKDSAPT VVSGILGGSVTLPLNIS
 VDTEIENVIWIGPKNALAFARPKNVTIMVKSYLGRDLITKWSYSLCISNLT LNDAGSYKAQINQRNFV
 TTEEF TLFVYAPFIEKLSVHVIEGDHRTLLEGSGLSIIISTLAEPVSVREG

TRTRPLE - GFP Tag - V

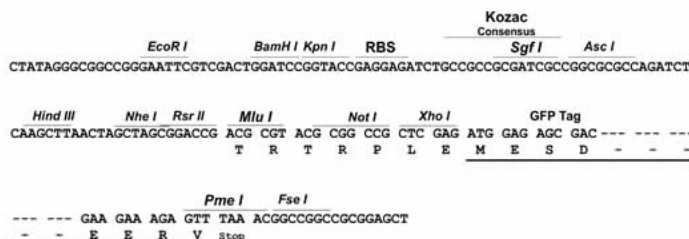
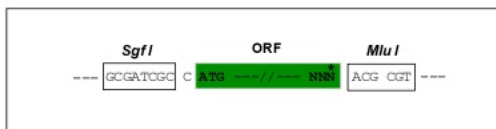
Restriction Sites: Sgfl-MluI



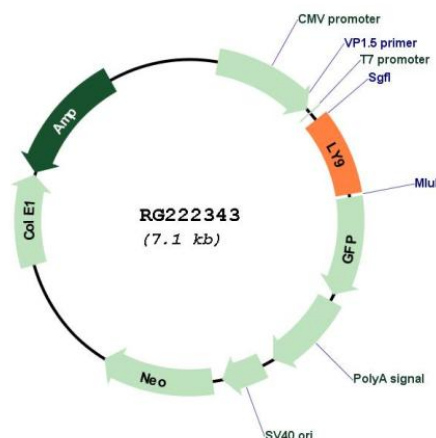
[View online »](#)

Cloning Scheme:

Cloning sites used for ORF Shuttling:



Plasmid Map:



ACCN: NM_001033667

ORF Size: 579 bp

OTI Disclaimer: The molecular sequence of this clone aligns with the gene accession number as a point of reference only. However, individual transcript sequences of the same gene can differ through naturally occurring variations (e.g. polymorphisms), each with its own valid existence. This clone is substantially in agreement with the reference, but a complete review of all prevailing variants is recommended prior to use. [More info](#)

OTI Annotation: This clone was engineered to express the complete ORF with an expression tag. Expression varies depending on the nature of the gene.

Components: The ORF clone is ion-exchange column purified and shipped in a 2D barcoded Matrix tube containing 10ug of transfection-ready, dried plasmid DNA (reconstitute with 100 ul of water).

Reconstitution Method:

1. Centrifuge at 5,000xg for 5min.
2. Carefully open the tube and add 100ul of sterile water to dissolve the DNA.
3. Close the tube and incubate for 10 minutes at room temperature.
4. Briefly vortex the tube and then do a quick spin (less than 5000xg) to concentrate the liquid at the bottom.
5. Store the suspended plasmid at -20°C. The DNA is stable for at least one year from date of shipping when stored at -20°C.

RefSeq: [NM_001033667.3](#)

RefSeq Size: 1525 bp

RefSeq ORF: 582 bp

Locus ID: 4063

UniProt ID: [Q9HBG7](#)

Cytogenetics: 1q23.3

Protein Families: Transmembrane

Gene Summary: LY9 belongs to the SLAM family of immunomodulatory receptors (see SLAMF1; MIM 603492) and interacts with the adaptor molecule SAP (SH2D1A; MIM 300490) (Graham et al., 2006 [PubMed 16365421]).[supplied by OMIM, Mar 2008]