

Product datasheet for **RG222331**

CNTF (NM_000614) Human Tagged ORF Clone

Product data:

Product Type: Expression Plasmids
Product Name: CNTF (NM_000614) Human Tagged ORF Clone
Tag: TurboGFP
Symbol: CNTF
Synonyms: HCNTF
Mammalian Cell Selection: Neomycin
Vector: pCMV6-AC-GFP (PS100010)
E. coli Selection: Ampicillin (100 ug/mL)
ORF Nucleotide Sequence: >RG222331 representing NM_000614
 Red=Cloning site Blue=ORF Green=Tags(s)

TTTTGTAATACGACTCACTATAGGGCGGCCGGAATTCGTCGACTGGATCCGGTACCGAGGAGATCTGCC
 GCC**CGATCGCC**

ATGGCTTTCACAGAGCATTACCCTGACCCCTCACCGTCGGGACCTCTGTAGCCGCTCTATCTGGCTAG
 CAAGGAAGATTTCGTTACAGACCTGACTGCTCTTACGGAATCCTATGTGAAGCATCAGGGCCTGAACAAGAA
 CATCAACCTGGACTCTGCGGATGGGATGCCAGTGGCAAGCACTGATCAGTGGAGTGAGCTGACCGAGGCA
 GAGCGACTCCAAGAGAACCTTCAAGCTTACGTACCTCCATGTTTTGTTGGCCAGGCTCTTAGAAGACC
 AGCAGGTGCATTTTACCCAACCGAAGGTGACTCCATCAAGCTATACATACCCTTCTTCTCAAGTCGC
 TGCTTTGCATACCAGATAGAGGAGTTAATGATACTCCTGGAATACAAGATCCCCCGCAATGAGGCTGAT
 GGGATGCCTATTAATGTTGGAGATGGTGGTCTCTTTGAGAAGAAGCTGTGGGGCCTAAAGGTGCTGCAGG
 AGCTTTCACAGTGGACAGTAAGGTCCATCCATGACCTTCGTTTCATTTCTTCATCAGACTGGGATCCC
 AGCACGTGGGAGCCATTATTTGCTAACAAAGAAAATG

ACGCGTACGCGGCCGCTCGAG - GFP Tag - GTTTAA

Protein Sequence: >RG222331 representing NM_000614
 Red=Cloning site Green=Tags(s)

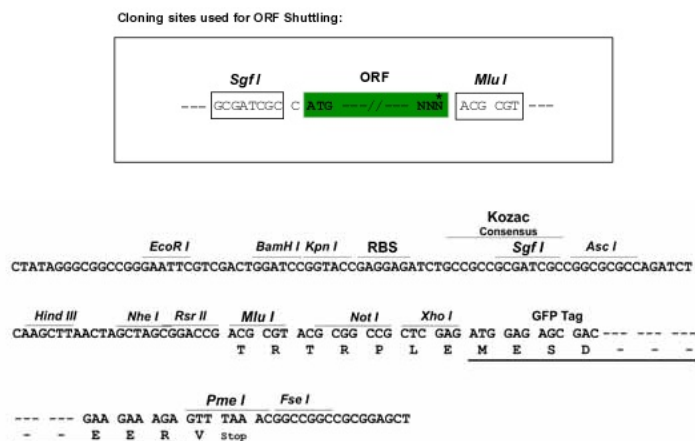
MAFTEHSPLTPHRRDLCSRSIWLARKIRSDLTALTESYVKHQGLNKNINLDSADGMPVASTDQWSELTEA
 ERLQENLQAYRTFHVLLARLLEDQQVHFPTTEGDFHQAIHTLLLQVAFAFYQIEELMILLEYKIPRNEAD
 GMPINVDGGLFEKKLWGLKVLQELSQWTVRSIHDLRFISSHQTGIPARGSHYIANNKKM

TRTRPLE - GFP Tag - V

Restriction Sites: Sgfl-MluI



[View online »](#)

Cloning Scheme:


ACCN: NM_000614

ORF Size: 600 bp

OTI Disclaimer: The molecular sequence of this clone aligns with the gene accession number as a point of reference only. However, individual transcript sequences of the same gene can differ through naturally occurring variations (e.g. polymorphisms), each with its own valid existence. This clone is substantially in agreement with the reference, but a complete review of all prevailing variants is recommended prior to use. [More info](#)

OTI Annotation: This clone was engineered to express the complete ORF with an expression tag. Expression varies depending on the nature of the gene.

Components: The ORF clone is ion-exchange column purified and shipped in a 2D barcoded Matrix tube containing 10ug of transfection-ready, dried plasmid DNA (reconstitute with 100 ul of water).

Reconstitution Method:

1. Centrifuge at 5,000xg for 5min.
2. Carefully open the tube and add 100ul of sterile water to dissolve the DNA.
3. Close the tube and incubate for 10 minutes at room temperature.
4. Briefly vortex the tube and then do a quick spin (less than 5000xg) to concentrate the liquid at the bottom.
5. Store the suspended plasmid at -20°C. The DNA is stable for at least one year from date of shipping when stored at -20°C.

RefSeq: [NM_000614.4](#)

RefSeq Size: 1891 bp

RefSeq ORF: 603 bp

Locus ID: 1270

UniProt ID: [P26441](#)

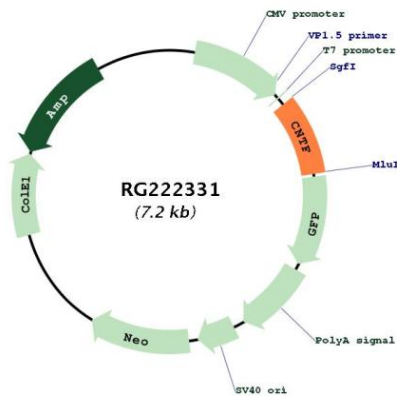
Cytogenetics: 11q12.1

Protein Families: Druggable Genome

Protein Pathways: Cytokine-cytokine receptor interaction, Jak-STAT signaling pathway

Gene Summary: The protein encoded by this gene is a polypeptide hormone whose actions appear to be restricted to the nervous system where it promotes neurotransmitter synthesis and neurite outgrowth in certain neuronal populations. The protein is a potent survival factor for neurons and oligodendrocytes and may be relevant in reducing tissue destruction during inflammatory attacks. A mutation in this gene, which results in aberrant splicing, leads to ciliary neurotrophic factor deficiency, but this phenotype is not causally related to neurologic disease. A read-through transcript variant composed of the upstream ZFP91 gene and CNTF sequence has been identified, but it is thought to be non-coding. Read-through transcription of ZFP91 and CNTF has also been observed in mouse. [provided by RefSeq, Oct 2010]

Product images:



Circular map for RG222331