

## Product datasheet for **RG222326**

### **LPPR3 (PLPPR3) (NM\_024888) Human Tagged ORF Clone**

#### **Product data:**

Product Type:	Expression Plasmids
Product Name:	LPPR3 (PLPPR3) (NM_024888) Human Tagged ORF Clone
Tag:	TurboGFP
Symbol:	PLPPR3
Synonyms:	LPPR3; LPR3; PRG-2; PRG2
Mammalian Cell Selection:	Neomycin
Vector:	pCMV6-AC-GFP (PS100010)
E. coli Selection:	Ampicillin (100 ug/mL)



[View online »](#)

ORF Nucleotide  
Sequence:

>RG222326 representing NM\_024888  
 Red=Cloning site Blue=ORF Green=Tags(s)

TTTTGTAATACGACTCACTATAGGGCGGCCGGGAATTCGTCGACTGGATCCGGTACCGAGGAGATCTGCC  
 GCCCGCATCGCC

ATGATCTCCACCAAGGAGAAGAACAAGATCCCGAAGGACAGCATGACGCTTCTGCCCTGCTTCTACTTCC  
 TGGAGCTGCCCATAGTGGCTTCTCCATCGTATCCTTGTACTTCCCTGGAGCTGACCGACCTTCAAGCC  
 GGCCAAGGTGGGCTTCCAGTGCTATGACCGCACTCTCCATGCCCTACGTGGAGACCAACGAGGAGCTC  
 ATCCCGCTGCTGATGCTGCTCAGCTTGGCCTTCGCGGCCCTGCCGCTCGATCATGGTGGCCGAGGGCA  
 TGTTGTACTGTCTGCAGTCCCGCTGTGGGGCCGTGCCGGGGGGCCCGCGGGGGGAGGGCAGCATCAA  
 CGCCGGCGGTGCAACTTCAACTCCTTCTGCGGCGTACGGTGCAGTTTGTGGGTGTCCACGTGTTCCGC  
 CTGTGTGCCACAGCCCTGGTACGGACGTATCCAGCTGGCCACGGGTTACCACACTCCCTTCTTCTCA  
 CCGTCTGCAAGCCCAACTACACTCTCCTGGGCAGTCTCGGAGGTCAACCCCTACATCACGAGGACAT  
 CTGCTCCGGCCAGACATCCACGCCATCCTGTCTGCACGGAAGACCTTCCCGTCCAGCAGCCAGCTG  
 TAGCCTTCGCCCGGGTCTATGTGTCCGTGAGTCCGGCACCTCACTGCCCTTCCAGGCCCTCTTGTGA  
 CCCGTGGGGAGCCCTCCCTGACCCCAACCCCATGCCCCAGATGTAATCAACTCGGTATCTCGGACAC  
 CACCAAGCTGCTGAAGCCCATCCTGGTCTTTCGCTTTGCCATCGCCGCGGGCGTATGCGGGCTCACGAG  
 ATCACGCACTACCGCAGCCACCTGTGGACGTGTATGCCGGTTCCTCATCGGGGCGGGCATCGTGCCT  
 ACCTGGCTGCCACGCGGTGGGCAACTTCCAGGCCCACTGCAGAGAAGCCCGCGGGCCCGGGCCCGC  
 CAAGGACGCGCTGCGGGCCCTGACGACGCGGGCCAGCACTCGGTTTATCAGCAGAATAAGTCGGTGAGC  
 ACCGACGAGCTGGGGCCCGAGGGCGGTGGAGGGCGCGCCCGCGCCGTGGCCCGGAGAAAGACCTCGC  
 TGGGCAGCTGAAGCGCGCCAGCTGGACGTGGACCTGTGGCCCGCGCAGCCCATGGCCAAGGAGAA  
 CATGGTGACCTTACGCCACAGCTGCCAGGGCCAGCGGCCCTCGCTGGACGACCCCGCGCGCCGCCAC  
 ATGACCATCCACGTGCCGCTGGACGCTCGCGCTCCAAGCAGCTCATCAGCGAGTGAAGCAGAAGAGCC  
 TGGAGGGCGCGGCTGGGGCTGCCGACGACGCCAGCCCGGGCACCTGCGCGCGCCCGCGCAACCCAT  
 GGCGGAGGAGGAGGAAGAGGAGGAGGACGAAGAGGAAGAGGAGGAGGAGGAGGAGGAGGAGGAGGAGG  
 CCGGCCCGCCCTCGCTTACCCACCGTGCAGGCGGGCCGGGGCTGGGGCTCGGGTATCCTCCAC  
 CGCGCGGGGGCCCGCCGCTGGTGCACATCCCGAGGAGGGCGCGCAGACGGGGCCGGCCTGTCCCC  
 CAAAAGCGGGCCCGGGTGGCGCCAAGTGGCTCATGATGGCCGAGAAGAGCGGGGCGGCAGTGGCCAAC  
 CCTCCGCGGTGCTGCAGTTCATCGCCATGTCCAAGGCTCCGGGCGCGCCGGGCCCAAGCGGGCCGAGA  
 CGGCGTGTGTCCAGCGCCAGCTCCGACTCCTCGCAGTACCGGTGCGCGTCCGACCGCGACTCCGCCAG  
 CATCGTGACCATCGACGCGCACGCGCCGACACCCCGTGGTGCACCTGTGCGCCGGCGCGCGCCCTGG  
 GAGTGAAGGCGGGCGGGCGGGGCAAGGCGGAGGCGGACGGCGGCTACGAGCTGGGGGACCTGGCGC  
 GCGGCTTCCGCGGGGGCCAGCCCGGGCGTGTCCCGGCTCGTCCGTCAGCGACGTGGACCAGGA  
 GGAGCCGCGGTTCCGGGGCGTGGCCACCGTCAACCTGGCCACGGGCGAGGGGCTGCCCGCTGGGGCG  
 GCCGATGGGGCGTGGGCCCGGGCAGCCGGGAGTCCACGCTGCGGCGCCACGCGGGCGCCCTGGGGCTGG  
 CGGAGCGGAGGCGGAGGCGGAGGCCAGGGCTACTTCCGCAAGATGCAGGCGCGCCGCTTCCCGAC

ACGCGTACGCGGGCGCTCGAG - GFP Tag - GTTTAA

Protein Sequence: >RG222326 representing NM\_024888  
 Red=Cloning site Green=Tags(s)

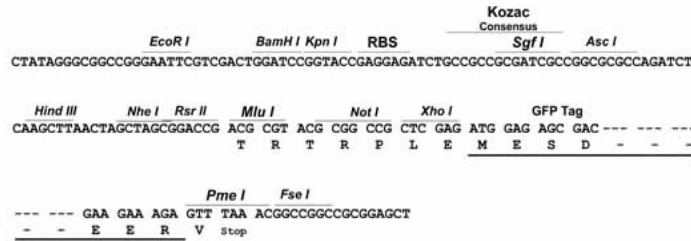
MISTKEKNKIPKDSMTLLPCFYFVELPIVASSIVSLYFLELTDLTKPAKVGFCYDRTLSPMPVETNEEL  
 IPLLMLLSLAFAAPAASIMVAEGMLYCLQSRWGRAGGPAGAEGSINAGGCNFSFLRRTVRFVGVHVFV  
 LCATALVTDVIQLATGYHTPFLLTVCKPNYTLTGTSCVENPYITQDICSGHDIHAILSARKTFPSQHATL  
 SAFAAVYVSVSPAPHCPSQALLLTRGEPSTPTPMPQMYFNFSVSDTTKLLKPILVFAFAIAAGVCGLTQ  
 ITQYRSHPVVYAGFLIGAGIAAYLACHAVGNFQAPPAEKPAAPAPAKDALRALTQRGHDSVYQNKSVS  
 TDELGPPGRLEGAPRPVAREKTSLGSLKRASVDVLLAPRSPMAKENMVTFSHTLPRASAPSLDDPARRH  
 MTIHVPLDASRSKQLISEWKQKSLEGRGLGLPDDASPHLRAPAEPMAEEEEEEEEEEEEEEEEDEEG  
 PAPPSTYPTVQARPLGPRVILPPRAGPPPLVHIPEEGAQTGAGLSPKSGAGVRAKWLMMAEKSGAAVAN  
 PPRLQVIAMSKAPGAPGPKAAETASSSSASSDSSQYRSPDRDSASIVTIDAHAPHPVHL SAGGAPW  
 EWKAAGGGAKEADGGYELGDLARGFRGGAKPPGVSPGSSVSDVDQEEPRFGAVATVNLATGEGLPLGA  
 ADGALPGSRESTLRRHAGGLLAEREAEAEAGYFRKMQARRFPD

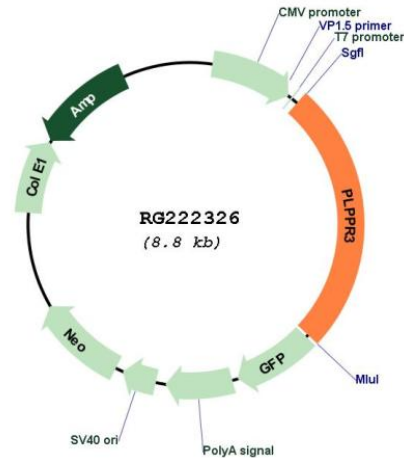
TRTRPLE - GFP Tag - V

Restriction Sites: SgfI-MluI

Cloning Scheme:

Cloning sites used for ORF Shutting:



**Plasmid Map:**


**ACCN:** NM\_024888

**ORF Size:** 2238 bp

**OTI Disclaimer:** The molecular sequence of this clone aligns with the gene accession number as a point of reference only. However, individual transcript sequences of the same gene can differ through naturally occurring variations (e.g. polymorphisms), each with its own valid existence. This clone is substantially in agreement with the reference, but a complete review of all prevailing variants is recommended prior to use. [More info](#)

**OTI Annotation:** This clone was engineered to express the complete ORF with an expression tag. Expression varies depending on the nature of the gene.

**Components:** The ORF clone is ion-exchange column purified and shipped in a 2D barcoded Matrix tube containing 10ug of transfection-ready, dried plasmid DNA (reconstitute with 100 ul of water).

**Reconstitution Method:**

1. Centrifuge at 5,000xg for 5min.
2. Carefully open the tube and add 100ul of sterile water to dissolve the DNA.
3. Close the tube and incubate for 10 minutes at room temperature.
4. Briefly vortex the tube and then do a quick spin (less than 5000xg) to concentrate the liquid at the bottom.
5. Store the suspended plasmid at -20°C. The DNA is stable for at least one year from date of shipping when stored at -20°C.

**RefSeq:** [NM\\_024888.1](#), [NP\\_079164.1](#)

**RefSeq Size:** 2357 bp

**RefSeq ORF:** 2241 bp

**Locus ID:** 79948

UniProt ID: [Q6T4P5](#)

Cytogenetics: 19p13.3

Protein Families: Transmembrane

Gene Summary: The proteins in the lipid phosphate phosphatase (LPP) family, including PRG2, are integral membrane proteins that modulate bioactive lipid phosphates including phosphatidate, lysophosphatidate, and sphingosine-1-phosphate in the context of cell migration, neurite retraction, and mitogenesis (Brauer et al., 2003 [PubMed 12730698]).[supplied by OMIM, Mar 2008]