

Product datasheet for **RG222317**

SLCO1B3 (NM_019844) Human Tagged ORF Clone

Product data:

Product Type:	Expression Plasmids
Product Name:	SLCO1B3 (NM_019844) Human Tagged ORF Clone
Tag:	TurboGFP
Symbol:	SLCO1B3
Synonyms:	HBLRR; LST-2; LST-3TM13; LST3; OATP-8; OATP1B3; OATP8; SLC21A8
Mammalian Cell Selection:	Neomycin
Vector:	pCMV6-AC-GFP (PS100010)
E. coli Selection:	Ampicillin (100 ug/mL)



[View online »](#)

ORF Nucleotide Sequence:

>RG222317 representing NM_019844
 Red=Cloning site Blue=ORF Green=Tags(s)

TTTTGTAATACGACTCACTATAGGGCGGCCGGAATTCGTCGACTGGATCCGGTACCGAGGAGATCTGCC
 GCC**CGCATCGCC**

ATGGACCAACATCAACATTTGAATAAAACAGCAGAGTCAGCATCTTCAGAGAAAAAGAAAACAAGACGCT
 GCAATGGATTCAAGATGTTCTTGGCAGCCCTGTCAATTCAGCTATATTGCTAAAGCACTAGGTGGAATCAT
 TATGAAAATTTCCATCACTCAAATAGAAAAGGAGATTTGACATATCCTCTTCTCTTCTGCTGGTTAATTGAT
 GGAAGCTTTGAAATTGGAATTTGCTTGTGATTGATTTGTAAGTTACTTTGGATCTAAACTACACAGAC
 CGAAGTTAATTGGAATTGGTTGTCTCCTTATGGGAAGTGAAGTATTTTGACAGCTTTACCACATTTCTT
 CATGGGATATTAGGTATTCTAAAGAAACCCATATTAATCCATCAGAAAATTCAACATCAAGTTTATCA
 ACCTGTTAATTAATCAAACCTTATCATTCAATGGAACATCACCTGAGATAGTAGAAAAAGATTGTGTA
 AGGAATCTGGGTACACATGTGGATCTATGTCTTCATGGGGAATATGCTTCGTGGCATAGGGGAAACCC
 CATAGTACCATTGGGGATTTACATACATTGATGATTTTGCAAAAGAAGGACATTCTCCTTGTATTTAGGT
 AGTTTGAATGCAATAGGAATGATTGGTCCAGTCATTGGCTTTGCACTGGGATCTCTGTTTCTAAAATAT
 ACGTGGATATTGGATATGTAGATCTGAGCACTATCAGAATAACTCCTAAGGACTCTCGTTGGGTTGGAGC
 TTGGTGGCTTGGTTTCTTGTGTCTGGACTATTTCCATTATTTCTTCCATACCATTTTTTTTCTTGCCG
 AAAAATCCAAATAAACCAAAAAAGAAAGAAAAATTTCACTATCATTGCATGTGCTGAAAACAAATGATG
 ATAGAAATCAAACAGCTAATTTGACCAACCAAGGAAAAATGTTACCAAAAAATGTGACTGGTTTTTTTCCA
 GTCTTTGAAAAGCATCCTTACCAATCCCCTGTATGTTATATTTCTGCTTTTGACATTGTTACAAGTAAGC
 AGCTTTATTGGTTCTTTTACTTACGTCTTTAAATATATGGAGCAACAGTACGGTCAGTCTGCATCTCATG
 CTAACTTTTTGTGGGAATCATAACCTCCTACGGTTGCAACTGGAATGTTTTTAGGAGGATTTATCAT
 TAAAAAATTCAAATTGTCTTTAGTTGGAATTGCCAAATTTTCATTTCTTACTTCGATGATATCCTTCTTG
 TTTCAACTTCTATATTTCCCTCTAATCTGCGAAAGCAAATCAGTTGCCGGCCTAACCTTGACCTATGATG
 GAAATAATTCAGTGGCATCTCATGTAGATGTACCCTTTCTTATTGCAACTCAGAGTGCAATTGTGATGA
 AAGTCAGTGGGAACCAAGTCTGTGGGAACAATGGAATAACTTACCTGTACCTTGTCTAGCAGGATGCAAA
 TCCTCAAGTGGTATTA AAAAGCATACAGTGT TTTATAACTGTAGTTGTGTGGAAGTAACTGGTCTCCAGA
 ACAGAAATTA CTAGCGCACTTGGGTGAATGCCCAAGAGATAACTTGTACAAGGAAATTTTTCATCTA
 TGTTGCAATTCAAGTCATAAACTCTTTGTCTCTGCAACAGGAGGTACCACATTTATCTTGTGACTGTG
 AAGATTGTCAACCTGAATTGAAAGCACTTGAATGGGTTTCCAGTCAATGGTTATAAAGAACTAGGAG
 GAATTCTAGCTCCAATATATTTGGGGCTCTGATTGATAAAACATGTATGAAGTGGTCCACCAACAGCTG
 TGGAGCACAAGGAGCTTGTAGGATATATAATCCGTATTTTTTGGGAGGTTCTACTTGGGCTTATCTATA
 GCTTTAAGATTCCAGCACTTGT TTTATATATTGTTTTTCAATTTTGTATGAAGAAAAATTTCAAGGAA
 AAGATACCAAGGCATCGGACAATGAAAGAAAAGTAAATGGATGAAGCAAACCTTAGAATTTCTAAATAATGG
 TGAACATTTTGTACCTTCTGCTGGAACAGATAGTAAAACATGTAATTTGGACATGCAAGACAATGCTGCT
 GCCAAC

ACGCGTACGCGGCCGCTCGAG - GFP Tag - GTTTAA

Protein Sequence: >RG222317 representing NM_019844
 Red=Cloning site Green=Tags(s)

MDQHQLNKTAESASSEKKKTRRCNGFKMFLAALSFSYIAKALGGIIMKISITQIERRFDISSSLAGLID
 GSFEIGNLLVIVFVSYFGSKLHRPKLIGIGCLLMGTGSILTALPHFFMGYYRYSKETHINPSENSTSSLS
 TCLINQTL SFNGT SPEIVEKDCVKESGSHMWIYVFMGNMLRGIGETPIVPLGISYIDDFAKEGHSSLYLG
 SLNAIGMIGPVIGFALGSLFAKIYVDIGYVDLSTIRITPKDSRWVGAWWLGFLVSGLFSIISSIPFFFLP
 KNPKNKPKERKISLSLHVLTNDNRNQTANLTNQGNVTKNVTGFFQSLKSILTNPPLYVIFLLLTLQVS
 SFIGSFYVFKYMEQQYQGSASHANFLLGIIITPTVATGMFLGGFIIKKFKLSLVGIAKFSFLTSMISFL
 FQLLYFPLICESKSVAGLTLTYDGNNSVASHVDVPLSYCNSECNCDESQWEPVCGNNGITYLSPCLAGCK
 SSSGIIKHTVFYNCSCVEVTGLQNRNYS AHLGECPRDNTCTRKFFIYVAIQVINSLSFATGGTTFILLTV
 KIVQPELKALAMGFQSMVIRTLGGILAPIYFGALIDKTCMKWSTNSCGAQGACRIYNSVFFGRVYLGLSI
 ALRFPALVLYIVFIFAMKKKFKGKDTKASDNERKVMDEANLEFLNNGEHFVPSAGTDSKTCNLDMQDNAA
 AN

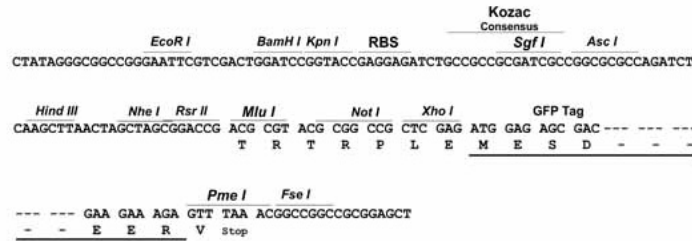
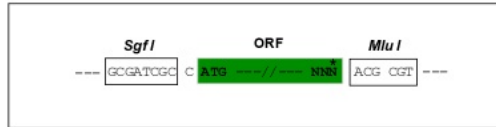
TRTRPLE - GFP Tag - V

Restriction Sites:

SgfI-MluI

Cloning Scheme:

Cloning sites used for ORF Shuttling:

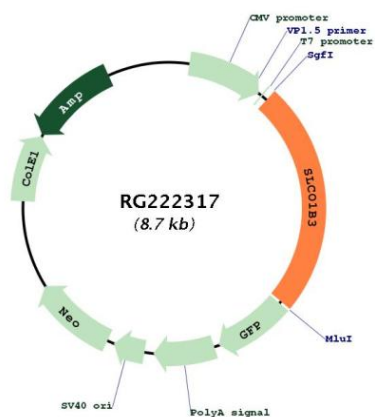


ACCN: NM_019844

ORF Size: 2106 bp

OTI Disclaimer:	<p>Due to the inherent nature of this plasmid, standard methods to replicate additional amounts of DNA in E. coli are highly likely to result in mutations and/or rearrangements. Therefore, OriGene does not guarantee the capability to replicate this plasmid DNA. Additional amounts of DNA can be purchased from OriGene with batch-specific, full-sequence verification at a reduced cost. Please contact our customer care team at custsupport@origene.com or by calling 301.340.3188 option 3 for pricing and delivery.</p> <p>The molecular sequence of this clone aligns with the gene accession number as a point of reference only. However, individual transcript sequences of the same gene can differ through naturally occurring variations (e.g. polymorphisms), each with its own valid existence. This clone is substantially in agreement with the reference, but a complete review of all prevailing variants is recommended prior to use. More info</p>
OTI Annotation:	This clone was engineered to express the complete ORF with an expression tag. Expression varies depending on the nature of the gene.
Components:	The ORF clone is ion-exchange column purified and shipped in a 2D barcoded Matrix tube containing 10ug of transfection-ready, dried plasmid DNA (reconstitute with 100 ul of water).
Reconstitution Method:	<ol style="list-style-type: none"> 1. Centrifuge at 5,000xg for 5min. 2. Carefully open the tube and add 100ul of sterile water to dissolve the DNA. 3. Close the tube and incubate for 10 minutes at room temperature. 4. Briefly vortex the tube and then do a quick spin (less than 5000xg) to concentrate the liquid at the bottom. 5. Store the suspended plasmid at -20°C. The DNA is stable for at least one year from date of shipping when stored at -20°C.
RefSeq:	NM_019844.1, NP_062818.1
RefSeq Size:	2646 bp
RefSeq ORF:	2109 bp
Locus ID:	28234
UniProt ID:	Q9NPD5
Cytogenetics:	12p12.2
Domains:	OATP_N, OATP_C
Protein Families:	Druggable Genome, Transmembrane
Gene Summary:	<p>This gene encodes a liver-specific member of the organic anion transporter family. The encoded protein is a transmembrane receptor that mediates the sodium-independent uptake of endogenous and xenobiotic compounds and plays a critical role in bile acid and bilirubin transport. Mutations in this gene are a cause of Rotor type hyperbilirubinemia. Alternative splicing of this gene and the use of alternative promoters results in transcript variants encoding different isoforms that differ in their tissue specificity. [provided by RefSeq, Mar 2017]</p>

Product images:



Circular map for RG222317