

Product datasheet for **RG22299**

KIF21B (NM_017596) Human Tagged ORF Clone

Product data:

Product Type:	Expression Plasmids
Product Name:	KIF21B (NM_017596) Human Tagged ORF Clone
Tag:	TurboGFP
Symbol:	KIF21B
Mammalian Cell Selection:	Neomycin
Vector:	pCMV6-AC-GFP (PS100010)
E. coli Selection:	Ampicillin (100 ug/mL)
ORF Nucleotide Sequence:	>RG22299 representing NM_017596 Red=Cloning site Blue=ORF Green=Tags(s)

TTTTGTAATACGACTCACTATAGGGCGGCCGGGAATTCGTCGACTGGATCCGGTACCGAGGAGATCTGCC
GCC**CGATCGCC**

ATGGCCGGCCAGGGGGACTGCTGCGTCAAGGTGGCCGTCAAGGATCCGGCCCCAGCTGTGCAAGGAGAAGA
TTGAGGGCTGTCACATCTGTACCTCTGTTACCCCGGGAGAGCCCCAGGTCTGCTGGGGAAGGACAAGGC
CTTCACCTATGACTTTGTCTTCGACCTGGACACCTGGCAAGAACAGATCTATTCCACCTGTGTGAGCAAG
CTCATCCAGGGCTGCTTCGAGGGCTATAATGCCACGGTGTGGCCTATGGGCAGACGGGGCCGGGAAGA
CGTACACCATGGGCACTGGCTTTGACATGGCAACGTCCGAGGAGGAGCAGGGCATCATCCCGAGGGCCAT
CGCACACCTCTTTGGGGCATTGCCGAGCGCAAGCGCCGGGCACAGGAGCAGGGCGTGGCTGGACCTGAG
TTCAAAGTCAGCGCCAGTTTCTGGAGCTCTACAACGAGGAGATCCTTGACCTGTTTGACAGCACCCGTG
ACCCTGACACCCGCCACCGCAGGTCCAACATCAAGATCCACGAGGACGCAACCGTGGCATCTACACCAC
TGGCGTCACTTCTCGCCTCATCCACTCCCAGGAGGAGCTGATCCAGTGCCTGAAGCAGGGGGCCCTGTCC
CGCACCACAGCCAGCACCCAGATGAACGTGCAGAGCTCACGCTCCACGCCATCTTACCATCCACCTGT
GCCAGATGCGCATGTGCACCCAGCCGACCTGGTGAATGAGGCGGTGACTGGGCTTCTGATGGTACACC
TCCCTCGAGTGAGTATGAGACACTACTGCTAAGTTTCACTTTGTGGACCTGGCCGGCTCAGAGCGGCTG
AAGCGGACAGGGGCTACTGGCGAGCGGGCAAGGAGGGCATCTCCATCAACTGTGGCCTGCTGGCCTTGG
GCAATGTGATCAGCGCCTTAGGGGACCAGAGCAAGAAGTGGTGCACGTTCCCTACAGGGACTCCAAGCT
CACTCGGCTCCTCCAGGATTCGCTGGGGGGCAACAGCCAGACCATCATGATCGCCTGTGTGAGCCCTCA
GACCGAGATTTTATGGAGACCCTCAACACACTCAAATATGCCAATCGGGCCCCGAACATCAAGAACAAGG
TGGTAGTGAACAGGACAAGACCAGCCAGCAAATCAGTGCCTGCGGGCTGAGATTGCTCGGCTGCAGAT
GGAGCTGATGGAGTAAAGCGGGCAAGCGAGTATAGGAGAGGATGGCGCTGAGGGCTATAGTGATCTG
TTCGAGAGAATGCCATGCTACAGAAGGAGAATGGGGCCCTGCGGCTGCGGGTGAAGCCATGCAGGAGG
CCATCGATGCCATCAACAACCGCTCACCCAGCTCATGAGCCAGGAGGCAACCTGCTGTAGCCAAAGGC
CGGCGATGGCAATGAGGCCATTGGTGCCTGATCCAGAACTACATCCGGGAGATCGAGGACTACGGACT
AAGCTTCTAGAGAGTGAAGCCATGAACGAGTCCCTGCGCCGACGCTCTACGGGCTCGGCTAGGAGCC
CCTACTCCCTGGGTGCTTCTCCAGCCGCCCGGCTTCCGGGGCAGCCCTGCCAGCTCCATGGAGGATGC



[View online »](#)

CTCGGAGGTGATCCGCAGGGCCAAGCAGGACCTGGAGCGGCTAAAGAAGAAGGAGGTCAGGCAGCGGAGG
 AAGAGCCCCGAGAAGGAAGCCTTCAAAAAGAGGGCAAACTCCAACAGGAGAACAGCGAGGAGACGGATG
 AGAACGAGGCGGAGGAGGAGGAGGAAGAGCGAGACGAGAGTGGCTGTGAGGAGGAGGAAGGGCGCGAGGA
 TGAAGATGAGGACTCGGGCAGTGAAGAGAGCCTGGTGGACTCAGACTCAGACCCCGAGGAGAAGGAGGTG
 AACTTCCAGGCGGACCTGGCCGACCTGACTTGTGAGATCGAAATCAAGCAGAAGCTGATCGACGAGCTGG
 AGAACGCCAGCGGCGGTTGCAGACGCTCAAGCACCAGTATGAGGAAAAGCTGATTCTGCTGCAGAACAA
 GATCCGAGACACACAGCTGGAGCGCGACCGTGTGCTGCAGAACCTCAGCACCATGGAGTGCTATACTGAG
 GAGAAGGCCAACAAAGATCAAGGCAGACTATGAGAAGAGGCTGCGGGAGATGAACCGGACCTGCAGAAGC
 TGACGGCCGCCAGAAAAGACACGCCCGCTGCTTAAGAACCAGTCGCGCTACGAGAGGGAGCTGAAGAA
 GCTACAGGCCGAGGTGGCTGAGATGAAGAAGGCCAAGGTGGCCCTGATGAAGCAGATGCGTGAGGAGCAA
 CAGCGCGCGCGCTAGTGGAGACCAAGAGGAACCGGGAGATCGCACAGCTCAAGAAGGAGCAGCGCGCAC
 AGGAGTTTCAGATCCGAGCTCTGGAGTCCAGAAGCGGCAGCAGGAGATGGTCTGAGGAGGAAGACCCA
 GGAGGTTTCTGCACTGAGGCGCCTGGCCAAGCCATGTCTGAGCGGGTGGCAGGGCGTGCAGGACTAAAG
 CCACCCATGCTGGACTCTGGGGTGAAGGTGTCGCCAGCACTACCTCATCTGAGGCTGAATCAGGGGCC
 GCTCTGTCTCCAGCATCGTGCAGCAGTGAACCGCAAAATCAACCACTTCTTGGGGGACCATCTGCGCC
 CACTGTCAATGGCACCCGCTCCTGCCGAAAAGAAGTCCAGAAGAAGGGGGCCAGCCAGAGCTTCAGTAAG
 GCGGAAGGCTCAAGTGGCAGTCCCTGGAGCGACGGATCATTGACATCGTCATGCAGAGAATGACCATTTG
 TCAACCTGGAGGCTGACATGGAGCGGCTCATCAAGAAAAGGGAGGAGCTGTTCTCTGCAAGGAGGCACT
 GCGGAGGAAGCGGGAGCGGCTGCAGGCTGAGAGCCCCGAGGAAGAGAAGGGGCTGCAGGAGCTGGCTGAG
 GAGATCGAGGTGCTGGCAGCCAACATTGACTACATCAATGACGGCATCACCGACTGCCAGGCCACCATCG
 TGCAGCTGGAGGAGACCAAGGAGGAGCTGGACTCCACAGACACATCCGTGGTCACTCAGCTCTGCTCCCT
 GGCTGAAGCCCGCTCCTGCTAGACAACCTCCTCAAGGCATCCATTGACAAGGGGCTGCAAGTGGCACAA
 AAGGAAGCCCAGATCCGGCTGTTGGAGGGCCGACTGAGGCACGAGATATGGCAGGCTCTCCCAAGCC
 ATCTGCTCCTGGACGCCCTGCGTGAGAAGGCTGAAGCTCACCCGAGCTGCAGGCCCTCATCTACAATGT
 GCAGCAGGAGAATGGCTACGCCAGCACAGATGAGGAGATCTCAGAGTTCTCTGAGGGCAGCTTCTCCAG
 TCATTCACCATGAAAGGCTCCACCAGCCATGACGATTTCAAGTTCAAGAGCGAGCCCAAACCTGTCTGCC
 AAATGAAAGCTGTGTCGGCTGAGTGCCTGGGCCCCCACTGGATATCTCCACCAAGAACATCACCAAGTC
 CCTGGCTCCCTCGTTGAGATCAAAGAGGACGGAGTGGGCTTCTCTGTCCGAGACCCCTATTACCGGGAC
 AGGGTCTCGCGCACCGTCACTGCTACCCGGGGCAGCACTTCCCTAGGCAATCTCGAGCCACAGAGA
 CGTCCCCGCTGACGAGAAGGAAGTCTACGACCGAGGGCAGCCATTAGGTCCACAGATGTGGGATTCAC
 ACCCCCATCATCCCTCCCACTCGGCCCGCAATGACCGCAATGTCTTCTCTGCTCACCAGTAATCAG
 AGCCAGGGGTGACGCTGGACAAGGGCATCATCTCCCGGTTGGAGGAGCCAAGGTTGCACGGACGGCCC
 CACTGCAGTGTGTCTCCATGGCCGAAGGCCACACCAAGCCATCCTCTGCCTGGATGCCACAGATGAGTT
 GCTATTACAGGGTCAAAGACCGAAGCTGCAAGATGTGGAACCTGGTTACGGGACAGGAGATCGCAGCT
 CTAAGGGCCACCCCAACAACGTGGTCTCCATCAAGTACTGCAGCCACTCGGGGCTTGTGTTCTCCGTGT
 CCACCTCTACATCAAGGTGTGGACATCCGGGACTCAGCCAAGTGCATTGCGACTCTCAGTCTCCGGG
 CCAGGTGATCTCAGGGGATGCCTGTGCCCCACATCCACCGTGCATCACCAGTGTGCTCAGGGCAGCAT
 CAGATCAACCAGATCGCCCTCAGCCCTCGGGCACCATGCTGTACGCCGCTCGGGCAATGCCGTCCGCA
 TCTGGGAGCTTAGCAGGTTCCAGCCTGTGCGCAAGCTGACTGGCCACATCGGCCCTGTGATGTCCCTGAC
 GGTCAACCAGACGGCCAGCCAGCATGACCTCGTGGTACTGGCTCCAAGGACCACTACGTTAAGATGTTT
 GAGCTGGGCGAGTGTGTGACGGGACCATCGGCCCACTCACAACCTCGAGCCCCGCACTACGATGGCA
 TCGAGTGTCTCGCCATCCAGGGAGACATCCTGTTCAAGTGGCTCCCGAGATAACGGCATCAAGAAGTGGGA
 CCTAGACCAGCAGGAGCTCATCCAGCAAATCCCAATGCGCACAAAGGACTGGGTGTGCGCCCTGGCCTTC
 ATCCCGGGCCGCCCATGCTGCTCAGCGCTGCCGTGCGGGTGTATCAAGGTCTGGAACGTGGACAAC
 TCACACCCATCGGTGAGATCAAGGGCCACGACAGTCCCATCAATGCCATCTGCACCAATGCCAAGCATAT
 CTTACAGCCTCCAGTACTGCCGGTAAAGTTGTGGAATTACGTCCTGGACTACCCCTGCCTTCTCCT
 CGCGGAGTCTGGCCATAAAGGGCCGCGCCACCACCTGCC

ACGCGTACGCGGCCGCTCGAG – GFP Tag – GTTTAA

Protein Sequence: >RG222299 representing NM_017596
 Red=Cloning site Green=Tags(s)

MAGQGDCCKVAVRIRPQLSKEKIEGCHICTSVTPGEPQVLLGKDKAFTYDFVFDLDTWQEQIYSTCVSK
 LIEGCFEGYNATVLAYGQTGAGKTYTMTGTFDMATSEEEQGIIPRAIAHLFGGIAERKRRAEQGVAGPE
 FKVSAQFLELYNEEILDLDSTRDPDTRHRRSNIKIHDANGGIYTTGVT SRLIHSQEELIQCLKQGALS
 RTTASTQMNQSSSRSHAIFTIHLQMRMCTQPDLYNEAVTGLPDGTPPSSEYETL TAKFHFDLAGSERL
 KRTGATGERAKEGISINCGLLALGNVISALGDQSKKVVHVPYRDSKLRLLQDSLGGNSQTIMIACVSPS
 DRDFMETLNTLKYANRARNIKNKVVVNQDKTSQQISALRAE IARLQMELEMEYKAGKRVIGEDGAEGYSDL
 FRENAMLQKENGALRLRVKAMQEAIDA INNRTVQLMSQEANLLAKAGDGNEAIGALIQNYIREIEELRT
 KLLSEAMNESLRRSLSRASARSPYSLGASPAAPAFGGSPASSMEDASEVIRRAKQDLERLKKKEVRQRR
 KSPEKEAFKKRAKLQENSEETDENEAE EEEEEERDESGCEEEEGREDEDEDSGSEESLVSDSDPEEKEV
 NFQADLADLTCEIEIKQKLIDELNSQRRLQTLKHQYEEKLILLQNKIRDQTLERDRVLQNLSTMICYTE
 EKANKIKADYEKRLREMNRLQKLQAAQKEHARLLKNQSRYERELKKLQAEVAEMKKAKVALMKQMRREEQ
 QRRRLVETKRNREIAQLKKEQRRQEFQIRALESQKRQEMVLRKKTQEVSA LRRLAKPMSERVAGRAGLK
 PMLDSGAEVSASTTSSAE SGARSVSSIVRQWNRKINHFLGDHPAPT VNGTRPARKKFQKKGASQSF SK
 AARLKWQSLERRIIDIVMQRMTIVNLEADMERLIKREELFLLQEALRRKRERLQAESPEEEKGLQELAE
 EIEVLAANIDYINDGITDCQATIVQLEETKEELDSTDTSVVSSCSLAEARLLLDNFLKASIDKGLQVAQ
 KEAQIRLLEGRRLQDTMAGSSQNHL LLDALREKAEAPHELQALIYVNVQENG YASTDEEISEFSEGSFSQ
 SFTMKGSTSHDDFKFKSEPKLSAQMKAVSAECLGPPLDISTKNITKSLASLVEIKEDGVGFSVRDPYYRD
 RVSRTVSLPTRGSTFPRQSRATE TSPLTRRKS YDRGQPIRSTDVGFTPPSSPPTPRNDRNVF SRLTSNQ
 SQGSALDKGIISPVGAKGARTAPLQCVSMAEGHTKPI LCLDATDELFTGSKDRSCKMWNLV TGQEIAA
 LKGHPNNVVSIKYCSHSLVFSVSTSYIKVWDIRDSAKCIRTLTSSQV ISGDACAATSTRAITSQGEH
 QINQIALSPSGTMLYAAAGNAVRIWELSRFQPVGKLTGHI GPV MCLTVTQTASQHDLVVTGSKDHYVKMF
 ELGECVTGTIGPTHNFPPHYDIECLAIQGDILFSGSRDNGIKKWDLDQQELIQQIPNAHKDWVCALAF
 IPGRPMLLSACRAGVIKVVNVDNFTPIGEIKGHDSPINAICTNAKHIFTASSDCRVKLWVNYVPLTPCLP
 RRVLAIKGRATTL P

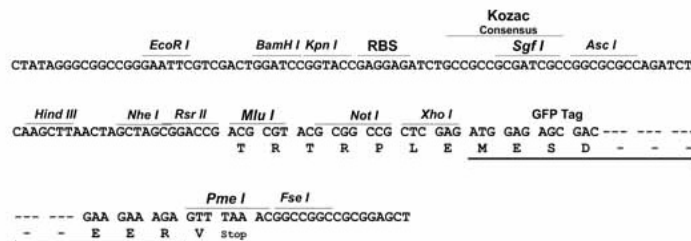
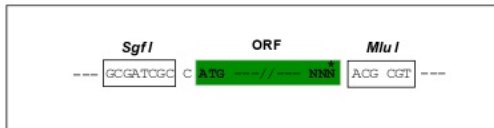
TRTRPLE - GFP Tag - V

Restriction Sites:

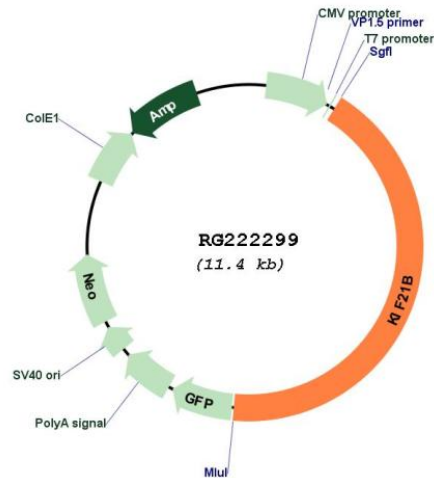
SgfI-MluI

Cloning Scheme:

Cloning sites used for ORF Shutting:



Plasmid Map:



ACCN: NM_017596

ORF Size: 4872 bp

OTI Disclaimer: The molecular sequence of this clone aligns with the gene accession number as a point of reference only. However, individual transcript sequences of the same gene can differ through naturally occurring variations (e.g. polymorphisms), each with its own valid existence. This clone is substantially in agreement with the reference, but a complete review of all prevailing variants is recommended prior to use. [More info](#)

OTI Annotation: This clone was engineered to express the complete ORF with an expression tag. Expression varies depending on the nature of the gene.

Components: The ORF clone is ion-exchange column purified and shipped in a 2D barcoded Matrix tube containing 10ug of transfection-ready, dried plasmid DNA (reconstitute with 100 ul of water).

Reconstitution Method:

1. Centrifuge at 5,000xg for 5min.
2. Carefully open the tube and add 100ul of sterile water to dissolve the DNA.
3. Close the tube and incubate for 10 minutes at room temperature.
4. Briefly vortex the tube and then do a quick spin (less than 5000xg) to concentrate the liquid at the bottom.
5. Store the suspended plasmid at -20°C. The DNA is stable for at least one year from date of shipping when stored at -20°C.

RefSeq: [NM_017596.4](#)

RefSeq Size: 9895 bp

RefSeq ORF: 4875 bp

Locus ID: 23046

UniProt ID: [O75037](#)

Cytogenetics: 1q32.1

Protein Families: Druggable Genome

Gene Summary: This gene encodes a member of the kinesin superfamily. Kinesins are ATP-dependent microtubule-based motor proteins that are involved in the intracellular transport of membranous organelles. Single nucleotide polymorphisms in this gene are associated with inflammatory bowel disease and multiple sclerosis. Alternatively spliced transcript variants encoding multiple isoforms have been observed for this gene. [provided by RefSeq, Nov 2011]